



QUEEN CUTLERY COMPANY

200 MADISON AVENUE

NEW YORK 16, N. Y.

1949

Catalog No. 82

Foreword...

As we enter our fifty-second year in the manufacture of quality cutlery, we pause to thank our many dealers throughout the country for their splendid cooperation and support during the past year.

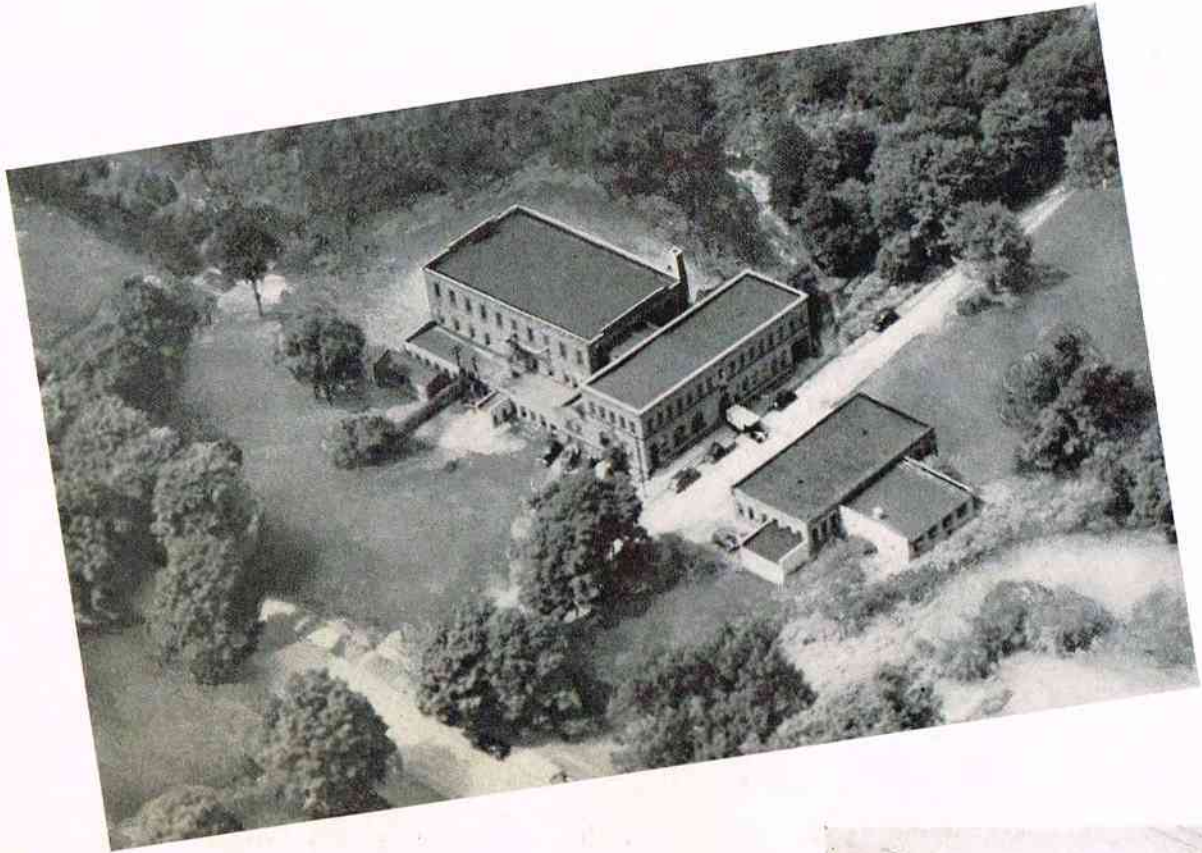
At this time we wish to rededicate ourselves to our sacred promise to you that our trademark shall remain "The Symbol of Quality" in the cutlery industry.

Our knives are made of the finest materials and by the most highly skilled workmen. We are renowned for our quality of product, attention to detail and our constant pioneering of improved, streamlined styling.

We believe this new catalog marks a milestone in our progress since the end of the war as you will find in our line two new additional display cases; five new numbers in hunting and fishing knives; eight new numbers in pocket and pen knives; six new numbers in kitchen knives, and, in late January, we will present our line of shears and scissors in eleven different patterns. In February we will have a matching fork to our steak knife and, at the same time, will present our steak knives and forks in boxed sets as well as blocked sets. Surely this is great progress and good news. You may be assured that we will continue our efforts to expand our line further so that it will serve most of your cutlery requirements. As new numbers are available, we will send you additional illustrated and descriptive sheets.

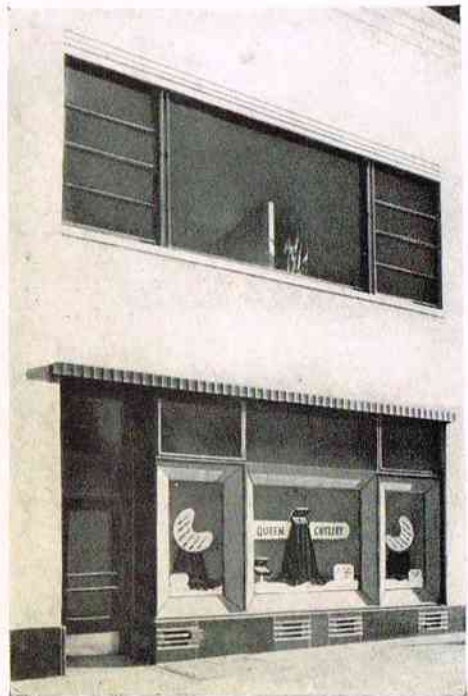
As you know, you may depend upon prompt delivery of any and all numbers we offer in our catalogs or price sheets.

QUEEN CUTLERY COMPANY



THE FACTORY

*Aerial photo of the
Factory buildings at
Titusville, Penna.*



THE OFFICE

*Office and Showroom building
at New York, N. Y.*



No. 1 Display Case

Small up-right display case, light oak finish, featuring some of our hunting and fishing knives for illustrative purposes. This case should be mounted with the patterns you carry in stock. It has folding legs in the rear for standing support or it can be hung on a wall by the two hooks in the rear. Please note the marking buttons which identify each number and also have space for you to mark your resale price.

Display Cases Double Your Sales



No. 2 Display Case

Medium-sized counter display case, light oak finish, with varied assortment. This case should be mounted with the patterns you carry in stock. Drawer in rear for storage of stock. If desired marking buttons can be had for each number mounted. These buttons have space for you to mark both the pattern number and your resale price for each number.

Display Cases Double Your Sales



No. 3 Display Case

Large counter display case, light oak finish. Storage space for stock in rear. If desired marking buttons can be had for each number mounted. These buttons have space both for you to mark your resale price and pattern number for each knife.

Display Cases Double Your Sales



No. 4 Display Case

Large floor display case, light oak finish. Dimensions are 55 inches high by 24 inches deep by 25 inches wide with display panel 24 inches wide by 44 inches high. This attractive case is large enough to accommodate our present complete line. Storage space in rear. Individual marking buttons can be had if desired for you to mark your resale prices on each number. An outstanding fixture for the progressive dealer.

Display Cases Double Your Sales

SYMBOL OF



QUALITY . . .

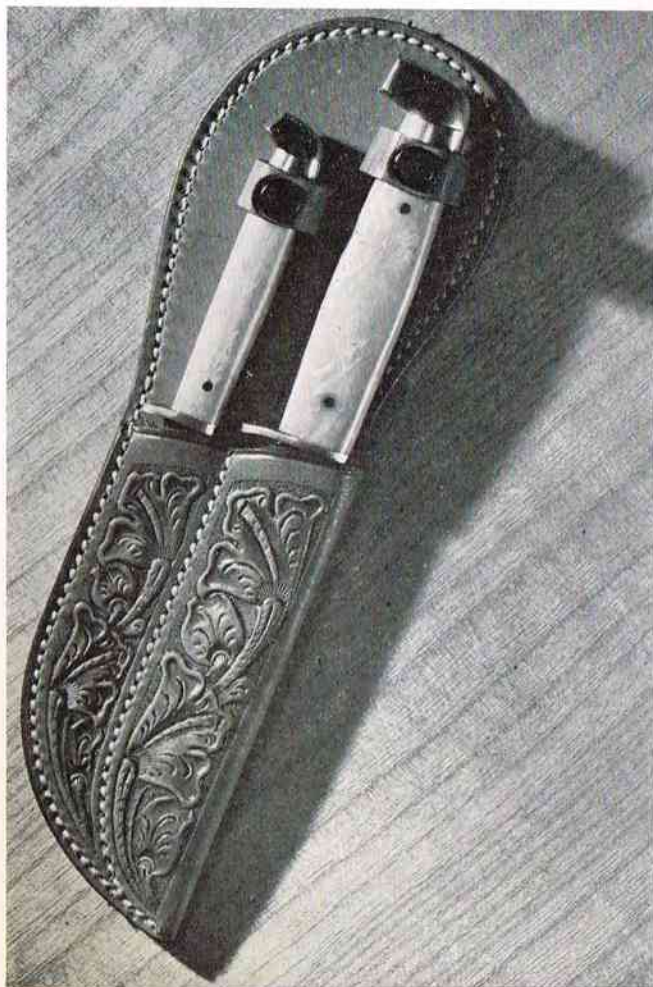
SYMBOL OF



QUALITY . . .



No. 80 Combination Hunting Set — Genuine bone stag handles. One hunting knife with 4-inch saber ground blade and one Trout knife with 3-inch flat ground blade. Complete in one handsome double leather sheath made of top grain cowhide, saddle stitched with handtooled floral design. Individually boxed.



No. 81 Combination Hunting Set — Simulated pearl handles. One hunting knife with 4-inch saber ground blade and one Trout knife with 3-inch flat ground blade. Complete in one handsome double leather sheath made of top grain cowhide, saddle stitched with handtooled floral design. Individually boxed.

SYMBOL OF

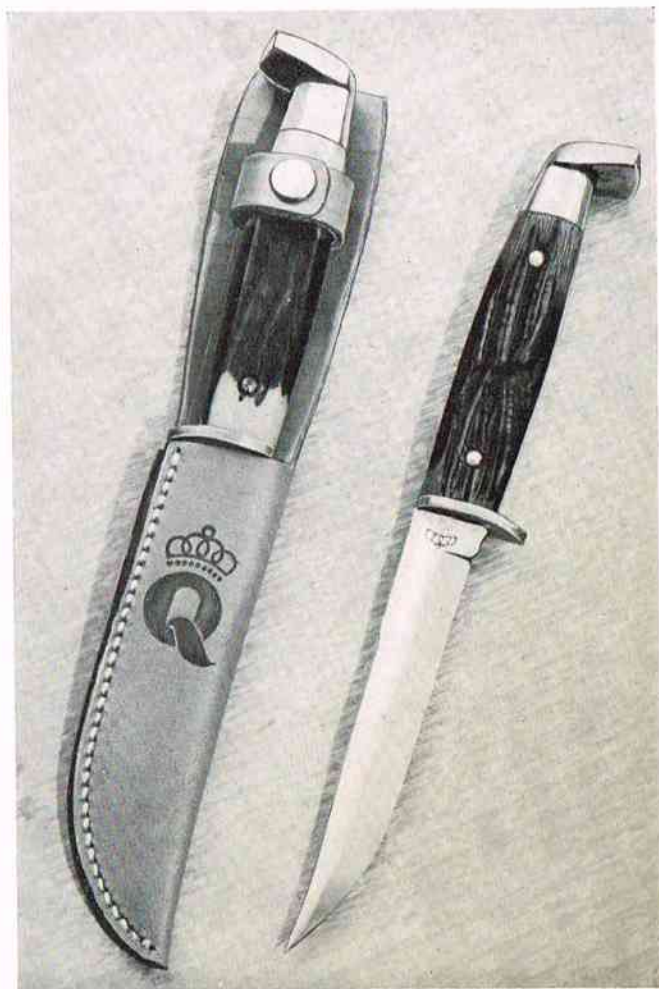


QUALITY . . .

SYMBOL OF



QUALITY . . .



No. 82 Hunting Knife — Genuine bone stag handle with 4-inch saber ground blade. Complete in leather sheath made of top grain cowhide, saddle stitched with handsomely embossed design.



No. 83 Hunting Knife — Simulated pearl handle with 4-inch saber ground blade. Complete in leather sheath made of top grain cowhide, saddle stitched with handsomely embossed design.

SYMBOL OF

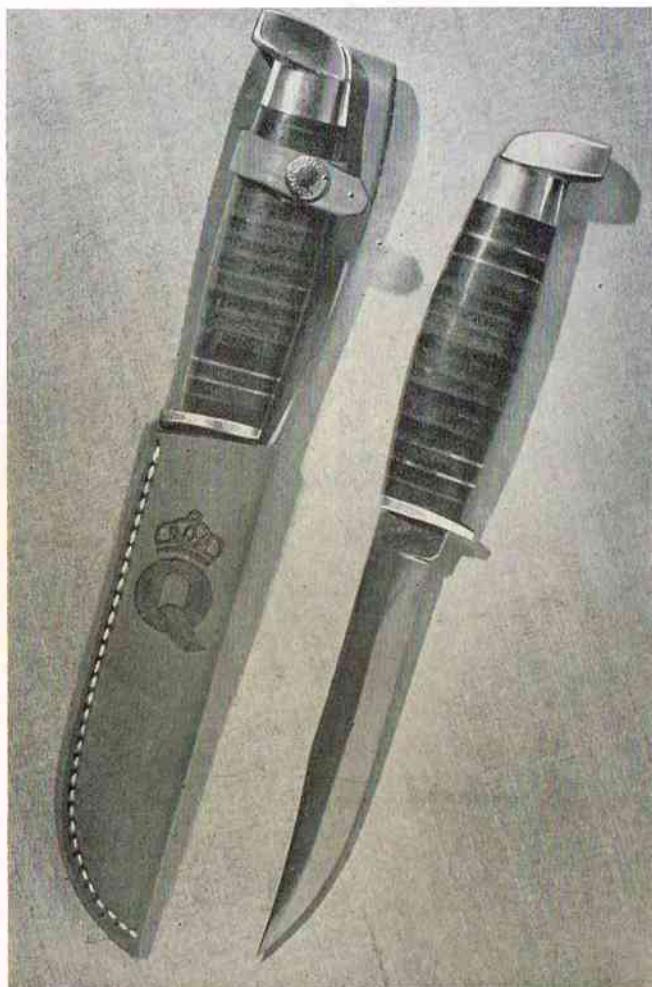


QUALITY . . .

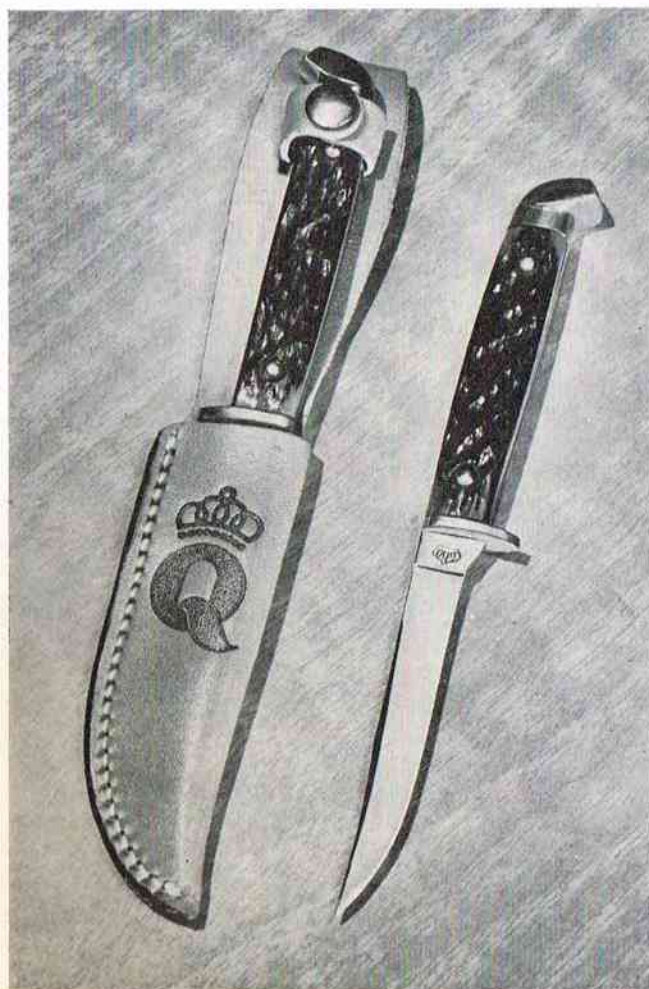
SYMBOL OF



QUALITY . . .



No. 84 Hunting Knife — Colorfully decorated leather handle with perma-gloss finish. 4-inch saber ground blade. Complete in leather sheath made of top grain cowhide, saddle stitched with handsomely embossed design.



No. 85 Finn or Trout Knife — Genuine bone stag handle with 3-inch flat ground blade. Most popular knife for fishing, hunting and all-purpose utility. Complete with leather sheath made of top grain cowhide, saddle stitched with handsomely embossed design.



No. 86 Finn or Trout Knife — Simulated Pearl handle with 3-inch flat ground blade. Most popular knife for fishing, hunting and all-purpose utility. Complete with leather sheath made of top grain cowhide, saddle stitched with handsomely embossed design.



No. 87 Expert Fishing Knife — Genuine bone stag handle with 4 1/4-inch blade. Scaler on back and scimitar for splitting. Made of high carbon chrome vanadium steel. Will not rust or stain. Keeps keen cutting edge for long period of time. Complete with hand-tooled floral designed sheath made of top grain cowhide, saddle stitched. The knife all fishermen have been waiting for. Individually boxed.

SYMBOL OF



QUALITY . . .

SYMBOL OF



QUALITY . . .



No. 88 Combination Fishing Set—Genuine bone stag handles. One Trout knife with 3-inch flat ground blade and one expert fishing knife with 4 1/4-inch blade. Both complete in one handsome double sheath made of top grain cowhide, saddle stitched, handtooled with floral design. The deluxe gift for any fisherman. Individually boxed.



No. 89 Hunting Knife—Genuine bone stag handle with 3 5/8 inch flat ground blade complete in leather sheath made of top grain cowhide, saddle stitched with handsomely embossed design.

SYMBOL OF



QUALITY . . .

SYMBOL OF



QUALITY . . .



No. 90 Hunting Knife — Simulated pearl handle with 3 5/8 inch flat ground blade complete in leather sheath made of top grain cowhide, saddle stitched with handsomely embossed design.



No. 91 Finn or Trout Knife — Amber handle with 3-inch flat ground blade. Most popular knife for fishing, hunting and all-purpose utility. Complete with leather sheath made of top grain cowhide, saddle stitched with handsomely embossed design.

SYMBOL OF



QUALITY . . .

SYMBOL OF



QUALITY . . .



No. 92 Hunting Knife—Amber handle with 4-inch saber ground blade. Complete in leather sheath made of top grain cowhide, saddle stitched with handsomely embossed design.



No. 94 Combination Hunting Set — Amber handles. One hunting knife with 4-inch saber ground blade and one Trout knife with 3-inch flat ground blade. Complete in one handsome double leather sheath made of top grain cowhide, saddle stitched with hand-tooled floral design. Individually boxed.

SYMBOL OF



QUALITY . . .

SYMBOL OF



QUALITY . . .



No. 1 Pruning or Hawkbill Pocket Knife — Rosewood handle. Brass linings, nickel silver finish. Complete with opening for leather thong. One 3-inch blade. $4\frac{1}{8}$ inches when closed. Sturdy, heavy-duty knife used by farmers, carpenters, electricians, etc.



No. 2 Serpentine Pattern — Two-blade pocket knife. Genuine bone stag handle. Double bolster, nickel silver finish with brass linings. One $2\frac{9}{16}$ -inch clip blade and one $2\frac{3}{4}$ -inch pen blade. $3\frac{1}{4}$ inches long when closed.

SYMBOL OF



QUALITY . . .

SYMBOL OF



QUALITY . . .



No. 3 Sleeveboard Pattern — Two-blade pen knife. Genuine bone stag handle. Double bolster, nickel silver finish with brass linings. One 2-inch clip blade and one 1-7/16-inch pen blade. 3-5/16 inches long when closed.



No. 4 Sleeveboard Pattern — Two-blade pen knife. Genuine Mother of Pearl handle. Double bolster, nickel silver finish with brass linings. One 2-inch clip blade and one 1-7/16-inch pen blade. 3-5/16 inches long when closed.

SYMBOL OF



QUALITY . . .

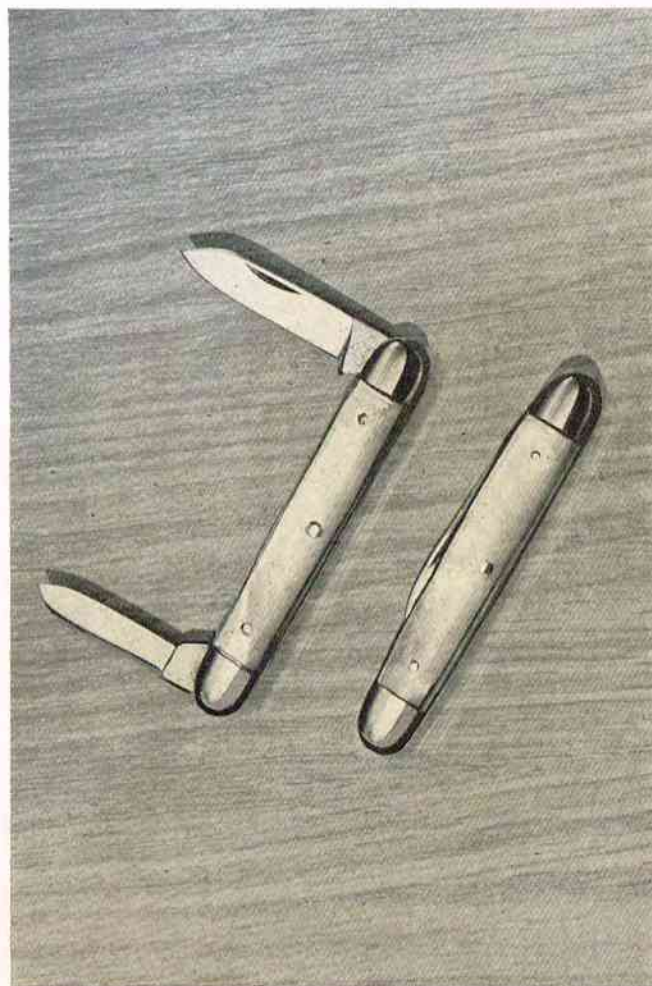
SYMBOL OF



QUALITY . . .



No. 5 Senator Pattern — Two-blade pen knife. Genuine bone stag handle. Double bolster, nickel silver finish with brass linings. One 1-7/16-inch spear blade and one 1-3/16-inch pen blade. 2½ inches long when closed.



No. 6 Senator Pattern — Two-blade pen knife. Genuine Mother of Pearl handle. Double bolster, nickel silver finish with brass linings. One 1-7/16-inch spear blade and one 1-3/16-inch pen blade. 2½ inches long when closed.

SYMBOL OF

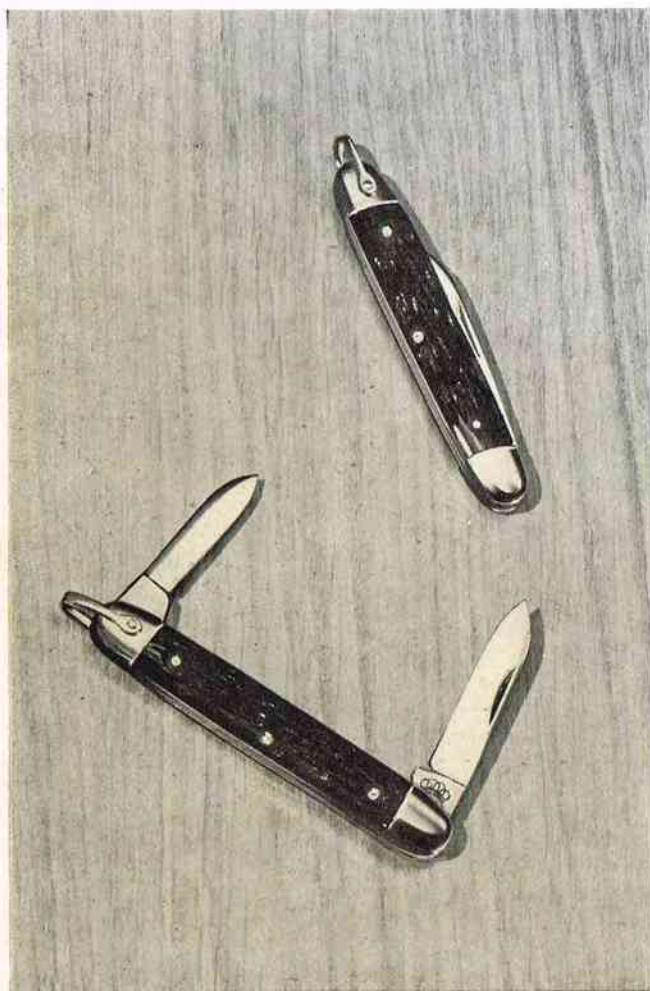


QUALITY . . .

SYMBOL OF



QUALITY . . .



No. 7 Senator Pattern — Two-blade pen knife. Genuine bone stag handle with bale ring. Double bolster, nickel silver finish with brass linings. One 1-7/16-inch spear blade and one 1-3/16-inch pen blade. 2½ inches long when closed.



No. 8 Senator Pattern — Two-blade pen knife. Genuine Mother of Pearl handle with bale ring. Double bolster, nickel silver finish with brass linings. One 1-7/16-inch spear blade and one 1-3/16-inch pen blade. 2½ inches long when closed.

SYMBOL OF



QUALITY . . .

SYMBOL OF



QUALITY . . .



No. 9 Stockmen's Pattern—Three-blade pocket knife. Genuine bone stag handle. Double bolster, nickel silver finish with brass linings. One 3-inch clip blade, one 2-inch spay blade and one $2\frac{1}{8}$ -inch sheep foot blade. 4 inches long when closed.



No. 10 Heavy Duty Pattern—Two-blade jack knife. Genuine bone stag handle. Double bolster, brass lined, nickel silver finish. One clip blade $2\frac{11}{16}$ inches long and one pen blade $2\frac{3}{16}$ inches long. $3\frac{11}{16}$ inches long when closed. The farmer's favorite.

SYMBOL OF



QUALITY . . .

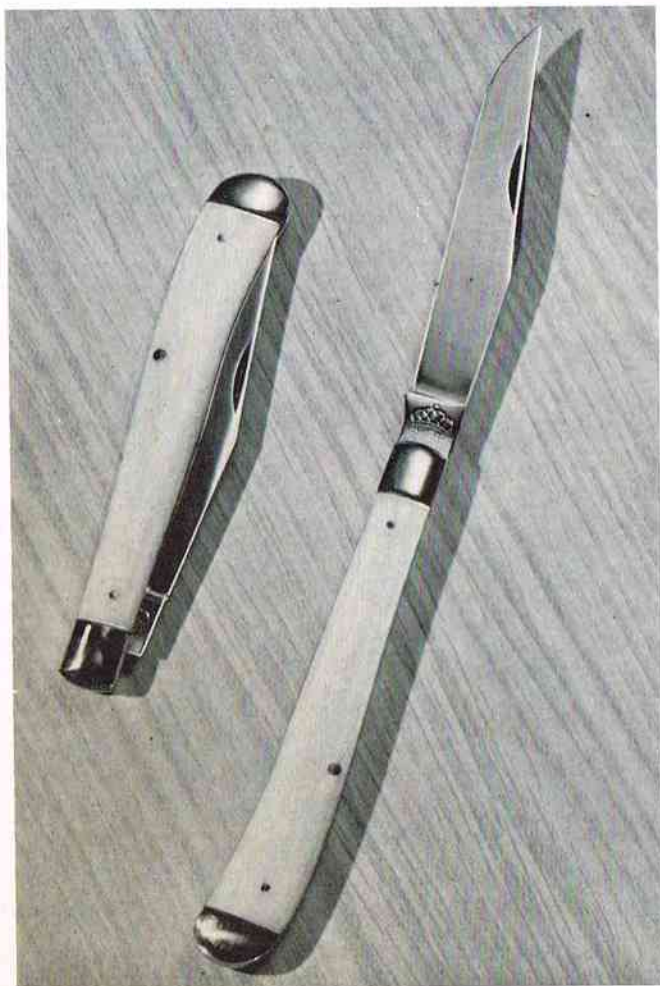
SYMBOL OF



QUALITY . . .



No. 11 Switch Pattern — Single-blade heavy duty pocket knife. Genuine bone stag handle. Double bolster, brass lined, nickel silver finish. $3\frac{5}{8}$ inch clip blade. $4\frac{1}{8}$ inches long when closed. A favorite of sportsmen and fishermen as well as for general use.



No. 12 Switch Pattern — Single-blade heavy duty pocket knife. Simulated pearl handle. Double bolster, brass lined, nickel silver finish. $3\frac{5}{8}$ inch clip blade. $4\frac{1}{8}$ inches long when closed. A favorite of sportsmen and fishermen as well as for general use.

SYMBOL OF



QUALITY . . .

SYMBOL OF



QUALITY . . .



No. 13 Switch Pattern — Single-blade heavy duty pocket knife. Amber handle. Double bolster, brass lined, nickel silver finish. $3\frac{5}{8}$ inch clip blade. $4\frac{1}{8}$ inches long when closed. A favorite of sportsmen and fishermen as well as for general use.



No. 14 Dogleg Pattern — Two-blade small jack knife. Genuine bone stag handle. Double bolster, brass lined, nickel silver finish. One $2\frac{1}{8}$ -inch clip blade and one $1\frac{7}{16}$ -inch pen blade. $2\frac{3}{4}$ inches long when closed. One of our most favored patterns.

SYMBOL OF



QUALITY . . .

SYMBOL OF



QUALITY . . .



No. 15 Congress Pattern — Two-blade pocket knife. Genuine bone stag handle. Double bolster, brass lined, nickel silver finish. One 2-inch sheep foot blade and one 1½ inch pen blade. 3½ inches long when closed. Always a leading number.



No. 16 Serpentine Pattern—Three blade Pocket Knife. Genuine bone stag handle. Double bolster, nickel silver finish with brass linings. One 2-9/16 inch clip blade, one 1 7/8 inch spay blade and one 1-11/16 inch pen blade. 3¼ inches long when closed. A stable number.

SYMBOL OF



QUALITY . . .

SYMBOL OF



QUALITY . . .



No. 17 Amber Dogleg Pattern — Two blade small jack knife. Amber handle. Double bolster, brass lined, nickel silver finish. One $2\frac{1}{8}$ inch clip blade and one $1\frac{7}{16}$ inch pen blade. $2\frac{3}{4}$ inches long when closed. One of our most favored patterns.



No. 18 Spear Point Special — Two-blade jack knife. Genuine bone stag handle. Double bolster, brass lined, nickel silver finish. One spear point blade is $2\frac{11}{16}$ inches long and one pen blade $2\frac{3}{16}$ inches long. $3\frac{11}{16}$ inches long when closed. Textile workers and mariners prefer this number.

SYMBOL OF



QUALITY . . .

SYMBOL OF



QUALITY . . .



No. 19 Folding Fishing Knife complete with disgorging and scaler. Genuine bone stag handle. Double bolster, brass lined, nickel silver finish. Very sturdily constructed. Large clip blade $3\frac{5}{8}$ inches long. Disgorging, scaler and bottle opener blade $3\frac{5}{8}$ inches long. Overall size 5 inches long. A standard pocket knife for fishermen and campers.



No. 20 Folding Outdoors Knife—Very sturdy construction. Genuine bone stag handle. Double bolster, brass lined, nickel silver finish. One large clip blade $3\frac{5}{8}$ inches long. Knife when closed 5 inches overall. A popular number.

SYMBOL OF QUALITY . . .



SYMBOL OF QUALITY . . .



No. 21 Spear Point Pen Pattern—Two-blade pen knife. Genuine bone stag handle. Double bolster, nickel silver finish with brass linings. One 2-inch spear point blade and one 1-7/16 inch pen blade. 3-5/16 inches long when closed.



No. 22 Barlow Knife, Clip Pattern—Here is what you have been waiting for since the end of the war. Our Barlow Knife has always enjoyed top popularity. Genuine bone stag handle. Heavy duty bolster. Cleanly polished inside of handle. One large clip blade 2-5/16 inches long and one pen blade 1 7/8 inches long. 3 1/2 inches overall when closed.

SYMBOL OF



QUALITY . . .

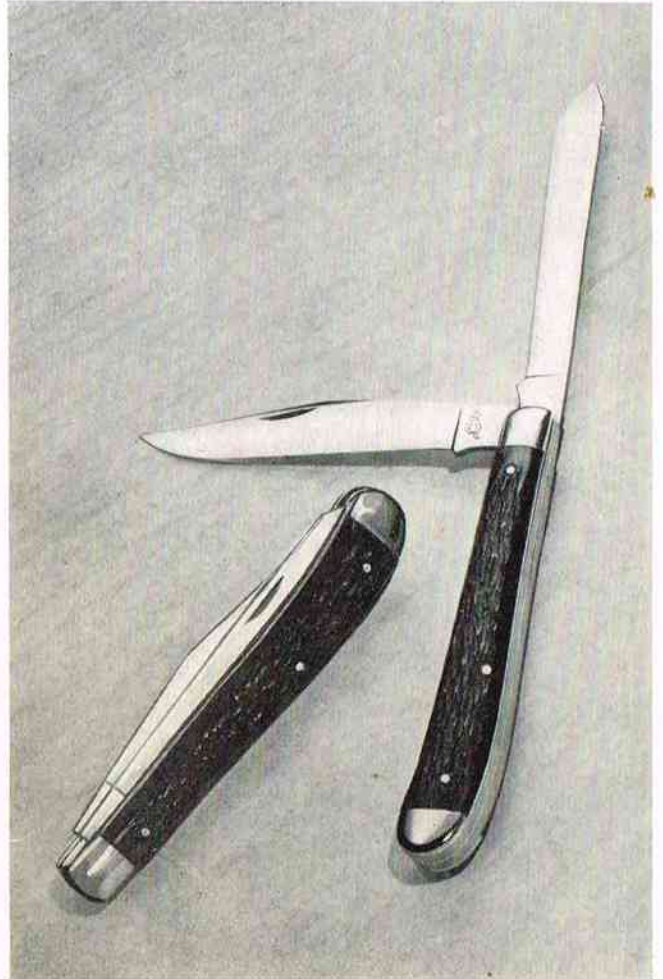
SYMBOL OF



QUALITY . . .



No. 23 Barlow Knife, Spear Point Pattern — Here is what you have been waiting for since the end of the war. Our Barlow Knife has always enjoyed top popularity. Genuine bone stag handle. Heavy duty bolster. Cleanly polished inside of handle. One large spear point blade 2-5/16 inches long and one pen blade 1 7/8 inches long. 3 1/2 inches overall when closed.



No. 24 Trapper's Pattern—Genuine bone stag handle. Sturdily constructed. Double bolster, nickel silver finish with brass linings. One 3 5/8 inch clip blade; one spey blade 3 5/8 inches long. 4-inches long when closed. Standard pattern.

SYMBOL OF



QUALITY . . .

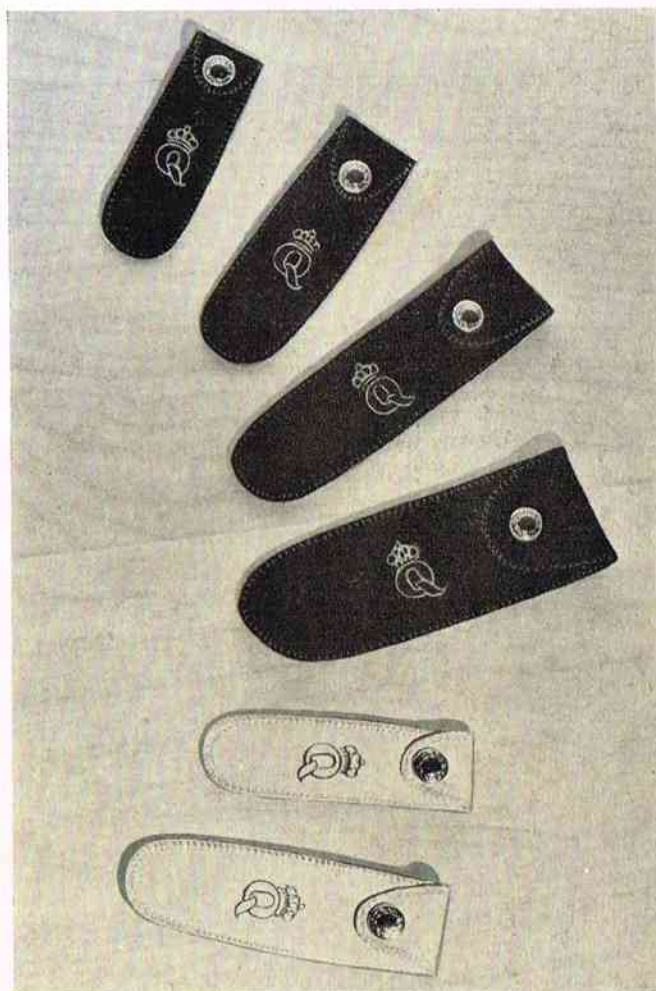
SYMBOL OF



QUALITY . . .



No. 25 Jet Push Button Pattern — Our own exclusive patented knife. Something brand new! Opens like a jet plane takes off. Double bolster, nickel silver finish with brass linings. Sturdily constructed. One heavy duty large clip blade 3-15/16 inches long. 5-inches long when closed.



Individual Pocket Knife Purses. Reading from top to bottom as follows: No. A Dark Suede—fits Nos. 5, 6, 7 and 8; No. B Dark Suede—fits Nos. 2, 3, 4, 14, 16 and 17; No. C Dark Suede—fits Nos. 9, 11, 12 and 13; No. D Dark Suede—fits No. 10, etc.; No. E White Calf—fits Nos. 5, 6, 7 and 8, etc.; No. F White Calf—fits Nos. 2, 3, 4, 14, 16 and 17, etc.

SYMBOL OF



QUALITY . . .



Mirror Polished Kitchen Knives —

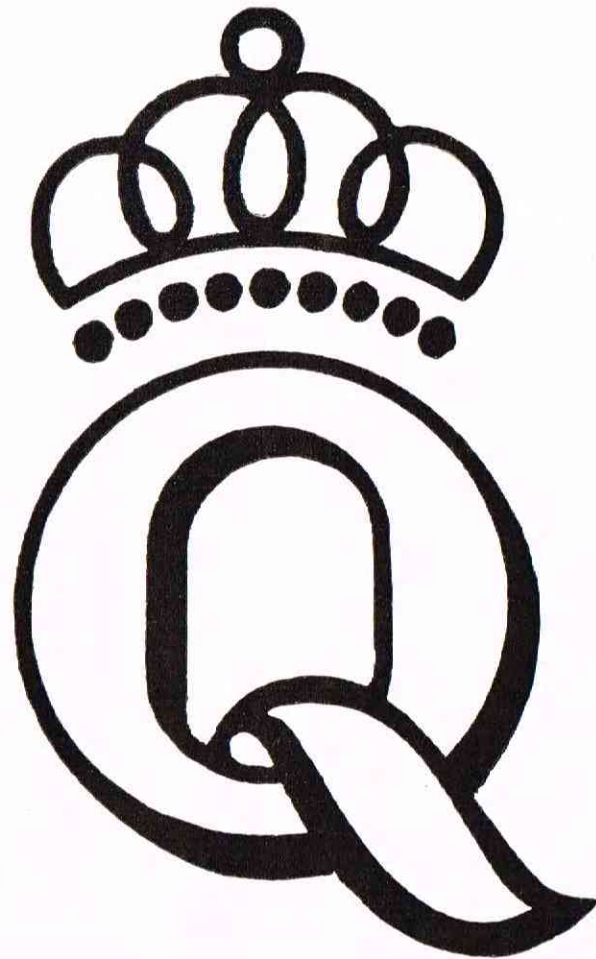
Ground out of whole stock high carbon steel. Full tang. Rosewood handles. Very strong rivets. High mirror polished finish. Reading from top to bottom as follows:

- No. 205 Paring knife** . . . 3-inch blade
- No. 204 Slicer** 8-inch blade
- No. 200 Boner** 6-inch blade
- No. 203 Butcher knife** 8-inch blade
- No. 202 Butcher knife** 7-inch blade
- No. 201 Butcher knife** 6-inch blade



Hand Hammered Rough Finish Kitchen Knives—Ground out of whole stock high carbon steel. Full tang. Hickory handles. Reading from top to bottom as follows:

- No. P-3 Paring knife** . . . 3-inch blade
- No. S-8 Slicer** 8-inch blade
- No. BO-6 Boner** 6-inch blade
- No. B-8 Butcher knife** . 8-inch blade
- No. B-7 Butcher knife** . 7-inch blade
- No. B-6 Butcher knife** . 6-inch blade



Scissors and Shears

SYMBOL OF



QUALITY . . .

SYMBOL OF



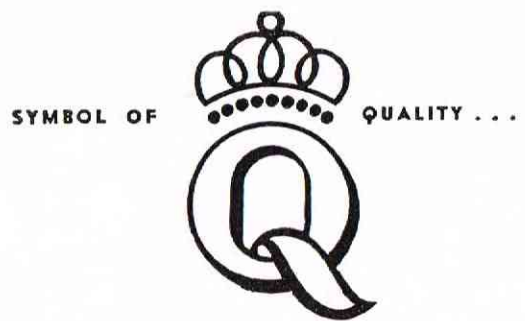
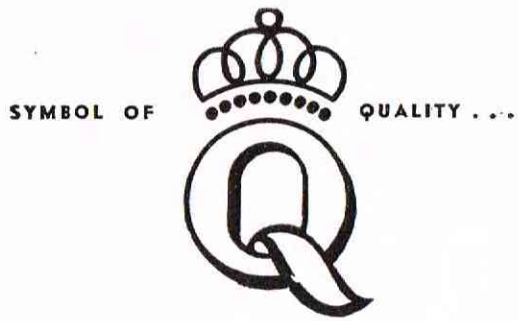
QUALITY . . .



No. 219—7½-inch Professional Barber Shear—Electric furnace hot forged steel. Tempered and Rockwell tested to our high standards. Holds keen cutting edge. Perfectly balanced.



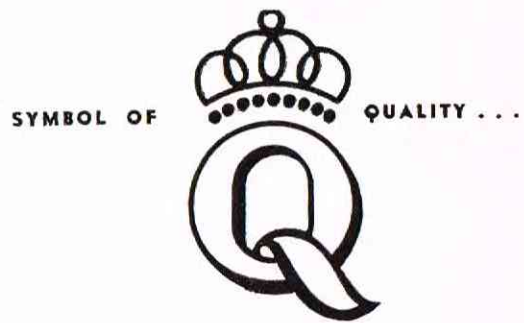
No. 220—8-inch Bent Trimmer Shear—Ideal for dressmaking. Full nickel finish. Made of electric furnace hot forged steel. Tempered and Rockwell tested to our high standards. Holds keen cutting edge.



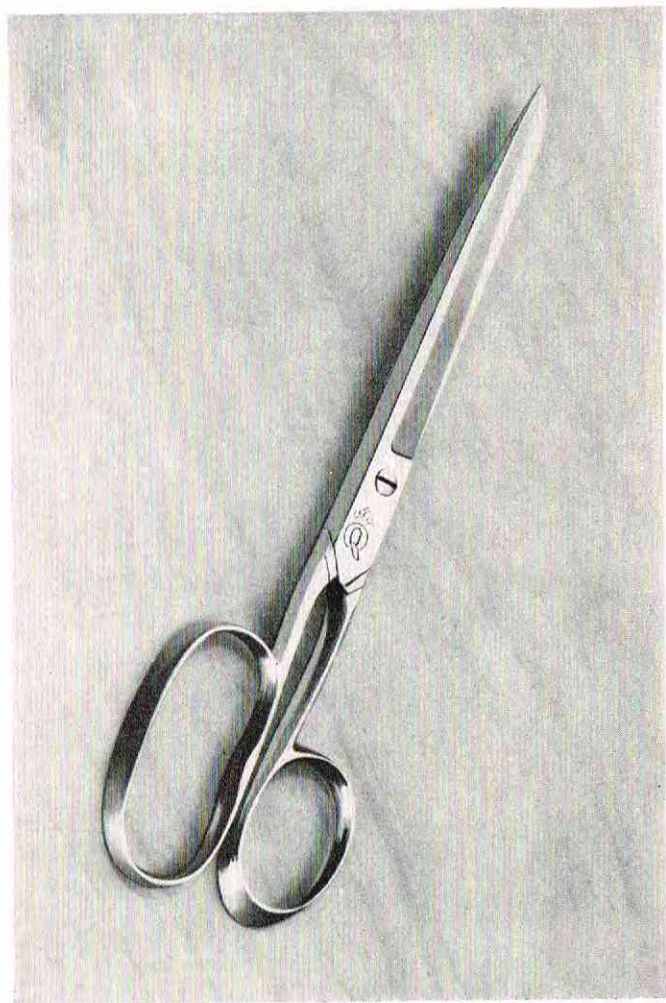
No. 221—7-inch Straight Heavy Trimmer Shear—For heavy duty cutting and household use. Full nickel finish. Made of electric furnace hot forged steel. Tempered and Rockwell tested to our high standards. Holds keen cutting edge.



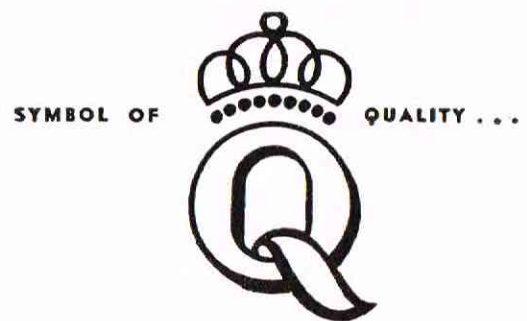
No. 222—8-inch Straight Heavy Trimmer Shear—For extra heavy cutting and household use. Full nickel finish. Made of electric furnace hot forged steel. Tempered and Rockwell tested to our high standards. Holds keen cutting edge.



No. 223—6-inch Light Trimmer Shear
—For dressmaking and household use. Full nickel finish. Made of electric furnace hot forged steel. Tempered and Rockwell tested to our high standards. Holds keen cutting edge.



No. 224—7-inch Light Trimmer Shear
—For dressmaking and household use. Full nickel finish. Made of electric furnace hot forged steel. Tempered and Rockwell tested to our high standards. Holds keen cutting edge.



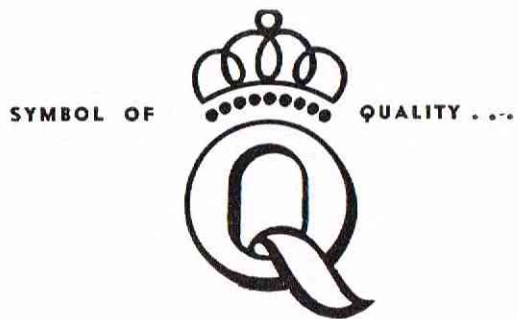
No. 225—8-inch Light Trimmer Shear

—For dressmaking and household use. Full nickel finish. Made of electric furnace hot forged steel. Tempered and Rockwell tested to our high standards. Holds keen cutting edge.



No. 226—6-inch Embroidery Trimmer Scissors

—For embroidery and other delicate work. Two sharp points. Full nickel finish. Made of electric furnace hot forged steel. Tempered and Rockwell tested to our high standards. Holds keen cutting edge.



No. 227—5-inch Embroidery Trimmer Scissors—For embroidery and other delicate work. Two sharp points. Full nickel finish. Made of electric furnace hot forged steel. Tempered and Rockwell tested to our high standards. Holds keen cutting edge.



No. 228—4-inch Embroidery Trimmer Scissors—For embroidery and other delicate work. Two sharp points. Full nickel finish. Made of electric furnace hot forged steel. Tempered and Rockwell tested to our high standards. Holds keen cutting edge.



No. 229 — 5-inch Pocket Scissors — For Store clerks, Mill workers, school and household use. Two blunt points. Full nickel finish. Made of electric furnace hot forged steel. Tempered and Rockwell tested to our high standards. Holds keen cutting edge.

QUEEN CUTLERY COMPANY

200 Madison Avenue, New York 16, N. Y.

PRICE LIST

Dozen	Price per Doz.	Dozen	Price per Doz.
HUNTING AND FISHING KNIVES			
_____ No. 80	Combination Stag Hunting Set..		\$42.00
_____ No. 81	Same as #80 in Simulated Pearl		42.00
_____ No. 82	Stag Hunting Knife		21.00
_____ No. 83	Simulated Pearl Hunting Knife		21.00
_____ No. 84	Leather Hunting Knife		18.00
_____ No. 85	Stag Finn Knife		12.00
_____ No. 86	Simulated Pearl Finn Knife		12.00
_____ No. 87	Expert Fishing Knife		21.00
_____ No. 88	Combination Fishing Set		42.00
_____ No. 89	Stag Hunting Knife Flat Blade		18.00
_____ No. 90	Same as #89 in Simulated Pearl		18.00
_____ No. 91	Amber Finn Knife		12.00
_____ No. 92	Amber Hunting Knife		21.00
_____ No. 94	Combination Amber Hunting Set		42.00
POCKET AND PEN KNIVES			
_____ No. 1	Pruning Knife		\$13.20
_____ No. 2	Serpentine Pattern		13.20
_____ No. 3	Sleeveboard Pattern		13.20
_____ No. 4	Genuine Mother of Pearl		24.00
_____ No. 5	Senator Pattern		13.20
_____ No. 6	Genuine Mother of Pearl		19.80
_____ No. 7	Senator Pattern		14.40
_____ No. 8	Genuine Mother of Pearl		21.00
_____ No. 9	Stockmen's Pattern		21.00
_____ No. 10	Heavy Duty Pattern		13.20
_____ No. 11	Stag Switch Pattern		12.00
_____ No. 12	Simulated Pearl Switch Pattern		12.00
_____ No. 13	Amber Switch Pattern		12.00
_____ No. 14	Stag Dogleg Pattern		13.20
_____ No. 15	Congress Pattern		13.20
_____ No. 16	Serpentine Pattern		19.80
_____ No. 17	Amber Dogleg Pattern		13.20
_____ No. 18	Spear Point Special		13.20
_____ No. 19	Folding Fishing Knife with Dis- gorger and Scaler		21.00
_____ No. 20	Folding Outdoors Knife.....		15.00
_____ No. 21	Spearpoint Pen Pattern		13.20
_____ No. 22	Barlow Knife, clip pattern.....		12.00
_____ No. 23	Barlow Knife, spear point pat- tern		12.00
_____ No. 24	Trapper's Pattern, stag.....		16.50
_____ No. 25	Jet Push Button Pattern.....		27.00
	Individual Pocket Knife, Purses A, B, C, D, E & F.....		2.40
STEAK KNIVES			
_____ No. S104	Steak Knife Set		\$ 72.00
_____ No. S106	Steak Knife Set		108.00
_____ No. S108	Steak Knife Set		135.00
_____ No. U101	Steak Knife		12.00
KITCHEN KNIVES (Hand Hammered Rough Finish)			
_____ No. B-6	6" Butcher Knife		\$7.20
_____ No. B-7	7" Butcher Knife		8.00
_____ No. B-8	8" Butcher Knife		8.00
_____ No. BO 6	6" Boner		7.20
_____ No. S-8	8" Slicer		8.00
_____ No. P-3	Paring Knife		3.60
KITCHEN KNIVES (Mirror Polished Flat Grind)			
_____ No. 200	6" Boner		\$8.00
_____ No. 201	6" Butcher		7.20
_____ No. 202	7" Butcher		8.00
_____ No. 203	8" Butcher		8.00
_____ No. 204	8" Slicer		8.00
_____ No. 205	3" Paring Knife		3.60
SCISSORS AND SHEARS			
_____ No. 219	7 1/2" Barbers		\$21.00
_____ No. 220	8" Bent Trimmer		24.00
_____ No. 221	7" Straight Heavy Trimmer....		21.00
_____ No. 222	8" Straight Heavy Trimmer....		22.50
_____ No. 223	6" Light Trimmer		18.00
_____ No. 224	7" Light Trimmer		19.80
_____ No. 225	8" Light Trimmer		21.00
_____ No. 226	6" Embroidery Trimmer		14.40
_____ No. 227	5" Embroidery Trimmer		13.20
_____ No. 228	4" Embroidery Trimmer		12.00
_____ No. 229	5" Pocket		16.50
DISPLAY CASES			
_____ No. 1	Display Case		\$ 3.00 each
_____ No. 2	Display Case		10.00 each
_____ No. 3	Display Case		15.00 each
_____ No. 4	Display Case		45.00 each

Do Not Detach — Use Enclosed Order Blanks



No. 1 Display Case

Same small up-right display case, light oak finish, featuring some of our pocket and pen knives. This case should be mounted with the patterns you carry in stock. It has folding legs in the rear for standing support or it can be hung on a wall by the two hooks in the rear. Please note the marking buttons which identify each number and also have space for you to mark your resale price.

Display Cases Double Your Sales

