



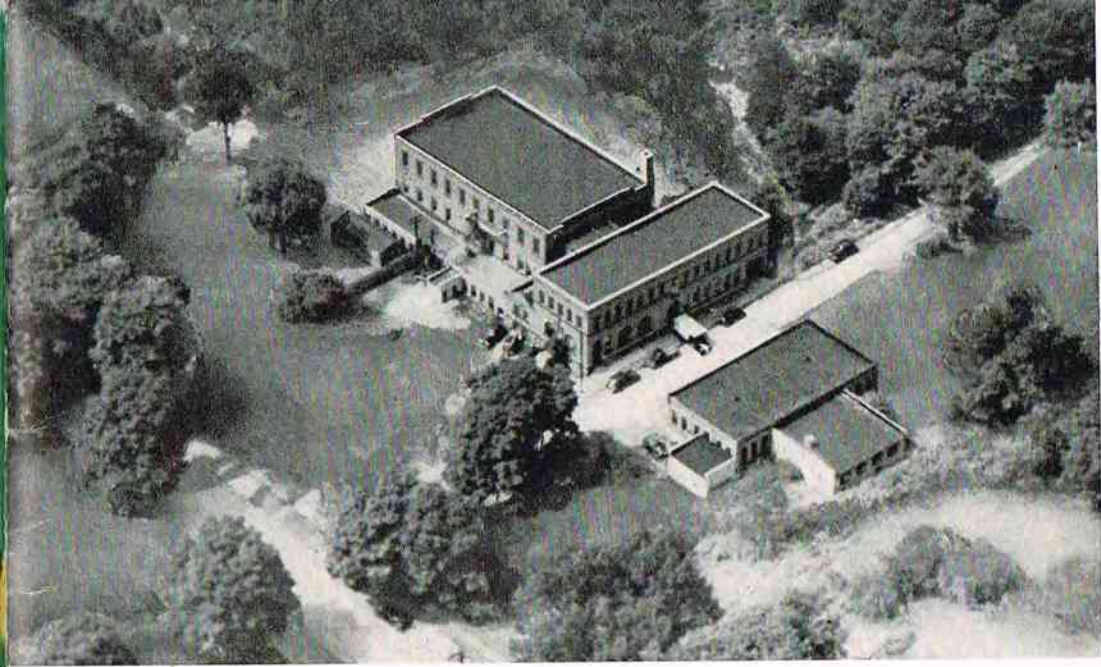
QUEEN CUTLERY COMPANY

200 MADISON AVENUE

NEW YORK 16, N. Y.

Catalog No. 88

1952?



THE FACTORY
Aerial photo of the
Factory buildings at
Titusville, Penna.

*W*e are proud that Queen Knives are considered amongst the finest in the world. The reason no doubt is that Queen knives are made only of the finest materials combined with the very best labor of our master cutlers.

In this catalog you will find some attractive new patterns as well as improvements on some of the old patterns. We want to thank you for your past patronage and will do our utmost to continue to give you prompt delivery and efficient service and, as always, the very finest quality cutlery at the most reasonable prices.

QUEEN CUTLERY COMPANY

Index

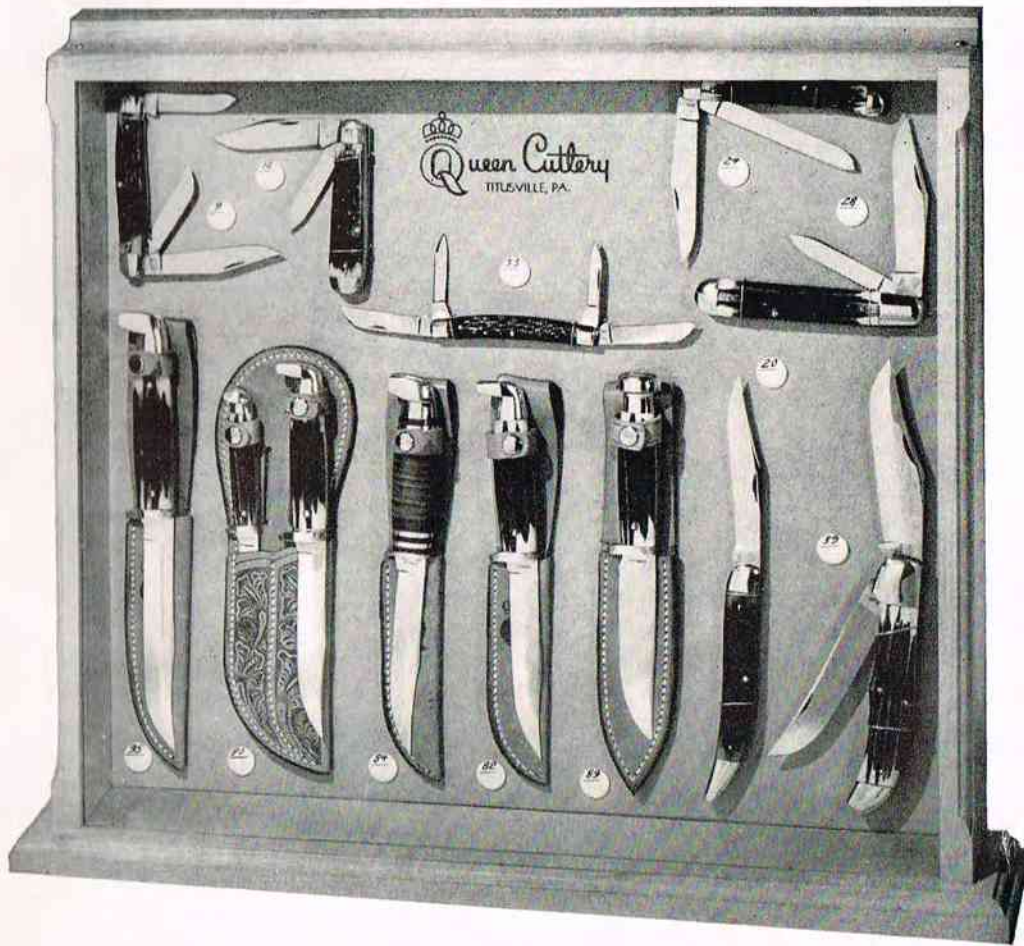
	Pages
Axes	13
De Luxe Matched Table Cutlery Chests	45-56
De Luxe Matched Table Line	44
Display Cases	2-5
Formica Line	41
Formica Steak Sets	42-43
Hair Clippers	33
Hunting & Fishing Knives	6-12
Kitchen Line	40
Pocket & Pen Knives	14-32
Scissors & Shears	34-39



No. 1 Display Case

Small up-right display case, light oak finish featuring some of our hunting and pocket knives for illustration purposes. This case measures 12 x 15 inches and will hold 16 pocket knives or 8 hunting knives. This case should be mounted with the patterns that you carry in stock. It has folding legs in the rear for standing support or it can be hung on the wall by two hooks in the rear. Marking buttons which identify each number and also have space for you to mark your resale price are available. If you desire one of these display cases, write us or ask our salesman.

Display Cases Double Your Sales



No. 1 Special Display Case

This case measures 18x15 inches and has a light oak finish and the display board will hold 25 pocket knives or 12 hunting knives or any combination of same. This case should be mounted with the patterns you carry in stock. It has folding legs in the rear for standing support or it can be hung up on the wall by two hooks in the rear. Please note the marking buttons which identify each number and also have space for you to write in your resale price. If you desire one, write us or ask our salesman.

Display Cases Save Handling Knives



No. 3 Display Case

Large counter display case, light oak finish. Measures 24 x 24 inches and will hold 56 pocket knives or 28 hunting knives. A hunting knife takes twice as much room as a pocket knife on a display board; a scissor or butcher knife three times as much room as a pocket knife. Combination hunting knives such as our #80 etc., take up twice as much room as the average hunting knife. Storage space for stock in the rear with lock. If desired marking buttons can be had for each number mounted. These buttons have space both for you to mark your resale price and pattern number for each knife. This case should be mounted with patterns that you carry in stock. If you desire one, write us or ask our salesman.

Display Cases Save Half Of Your Salesman's Time



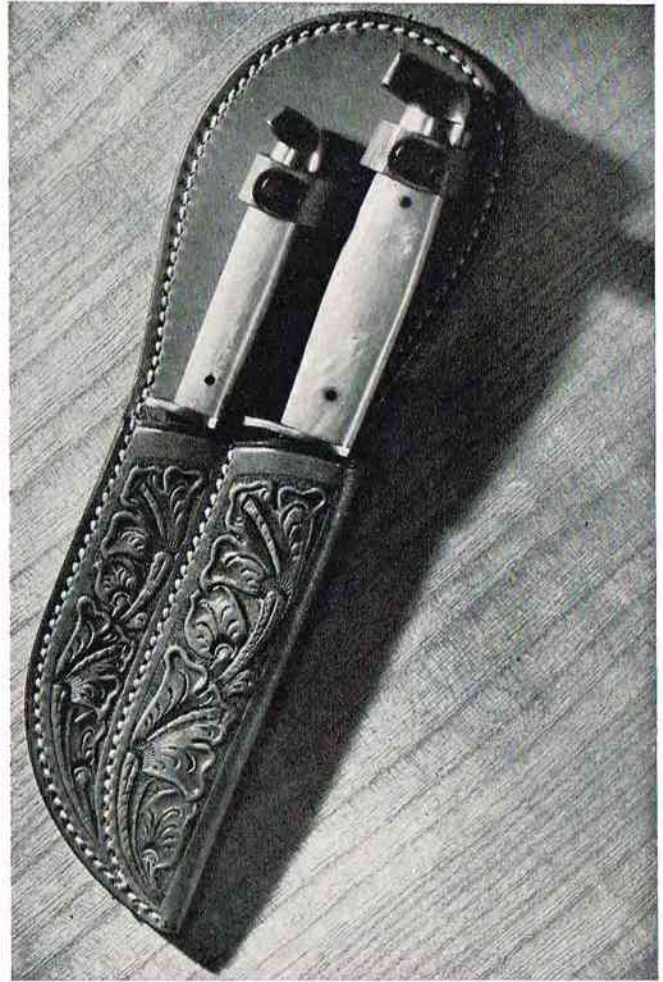
No. 4 Display Case

Large floor display case, light oak finish. Will hold 106 pocket knives or 53 hunting knives, or 36 scissors or butcher knives or any combination thereof. Storage space in rear with lock. Individual marking buttons will be furnished identifying each pattern number and also allowing space for you to mark your resale price. An outstanding fixture for the progressive dealer. If you desire one, write us or ask our salesman. Other larger display cases or special display panels will gladly be furnished to accommodate your needs.

Display Cases Double Your Sales



No. 80 Combination Hunting Set—Genuine *Frontier* bone stag handles. The steel used in these knives is the finest in the world. It is stainless and is especially made to conform with Queen's rigid specifications. Will not rust or stain and because of Queen's secret tempering process, will stay sharp far longer than any other knives. One hunting knife with 4 inch saber ground blade and one Rabbit knife with 3 inch flat ground blade. Complete in one handsome double leather sheath made of top grain cowhide, saddle stitched with handtooled floral design. Individually boxed.



No. 81 Combination Hunting Set — Same as No. 80, except simulated pearl handles.

No. 94 — Same as above except with amber handles.

No. 97 — Same as above except with brilliant red handles for hunter's safety.

All Queen Hunting Knives are made of the Finest Stainless Steel



No. 82 Hunting Knife — Genuine *Frontier* bone stag handle with 4 inch saber ground blade. The steel used in this knife is the finest in the world. It is stainless and is especially made to conform with Queen's rigid specifications. Will not rust or stain and because of Queen's secret tempering process, will stay sharp far longer than other knives. Complete in leather sheath made of top grain cowhide, saddle stitched with handsomely embossed design. Best selling large hunting knife.



No. 83 Hunting Knife — Same as No. 82, except simulated pearl handle.

No. 92 — Same as above except with amber handle.

No. 93 — Same as above except with brilliant red handle for hunter's safety.

All Queen Hunting Knives are made of the Finest Stainless Steel



No. 84 Hunting Knife — The steel used in these knives is the finest in the world. It is stainless and is especially made to conform with Queen's rigid specifications. Will not rust or stain and because of Queen's secret tempering process, will stay sharp far longer than other knives. Colorfully decorated leather handle with perma-gloss finish. 4 inch saber ground blade. Complete in leather sheath made of top grain cowhide, saddle stitched with handsomely embossed design.



No. 85 Finn or Trout Knife — Genuine *Frontier* bone stag handle with 3 inch flat ground blade. The steel used in this knife is the finest in the world. It is stainless and is especially made to conform with Queen's rigid specifications. Will not rust or stain and because of Queen's secret tempering process, will stay sharp far longer than any other knives. Most popular knife for fishing, hunting and all-purpose utility. Complete with leather sheath made of top grain cowhide, saddle stitched with handsomely embossed design. Best selling hunting knife in our line.

All Queen Hunting Knives are made of the Finest Stainless Steel



No. 86 Finn or Trout Knife — Same as No. 85, except simulated pearl handle.

No. 91 — Same as above except with amber handle.

No. 99 — Same as above except with brilliant red handle for hunter's safety.



No. 87 Expert Fishing Knife — Genuine *Frontier* bone stag handle with 4 ¼ inch blade. Scaler on back and scimitar for splitting. The steel used in this knife is the finest in the world. It is stainless and is especially made to conform with Queen's rigid specifications. Will not rust or stain and because of Queen's secret tempering process, will stay sharp far longer than other knives. Complete with leather sheath made of top grain cowhide, saddle stitched with handsomely embossed design.

All Queen Hunting Knives are made of the Finest Stainless Steel



No. 88 Combination Fishing Set — Genuine *Frontier* bone stag handles. The steel used in these knives is the finest in the world. It is stainless and is especially made to conform with Queen's rigid specifications. Will not rust or stain and because of Queen's secret tempering process, will stay sharp far longer than other knives. One Trout knife with 3 inch flat ground blade and one expert fishing knife with 4 ¼ inch blade. Both complete in one handsome double sheath made of top grain cowhide, saddle stitched, handtooled with floral design. Individually boxed.

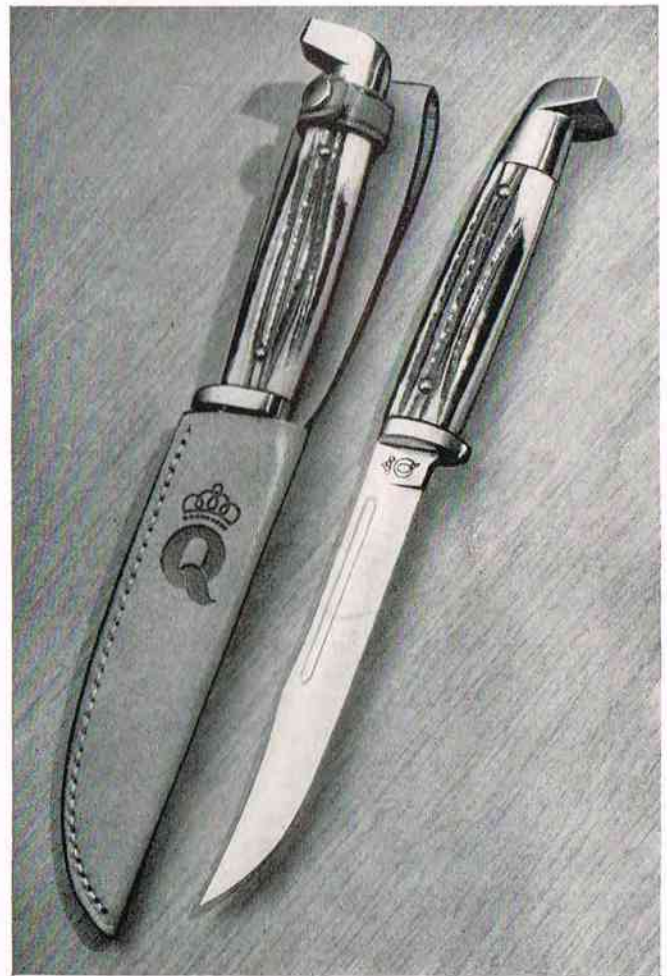


No. 89 Hunting Knife — Genuine *Frontier* bone stag handle with 3 ⅝ inch flat ground blade. The steel used in this knife is the finest in the world. It is stainless and is especially made to conform with Queen's rigid specifications. Will not rust or stain and because of Queen's secret tempering process, will stay sharp far longer than other knives. Complete in leather sheath made of top grain cowhide, saddle stitched with handsomely embossed design. A favorite knife for hunting and skinning wild game.

All Queen Hunting Knives are made of the Finest Stainless Steel

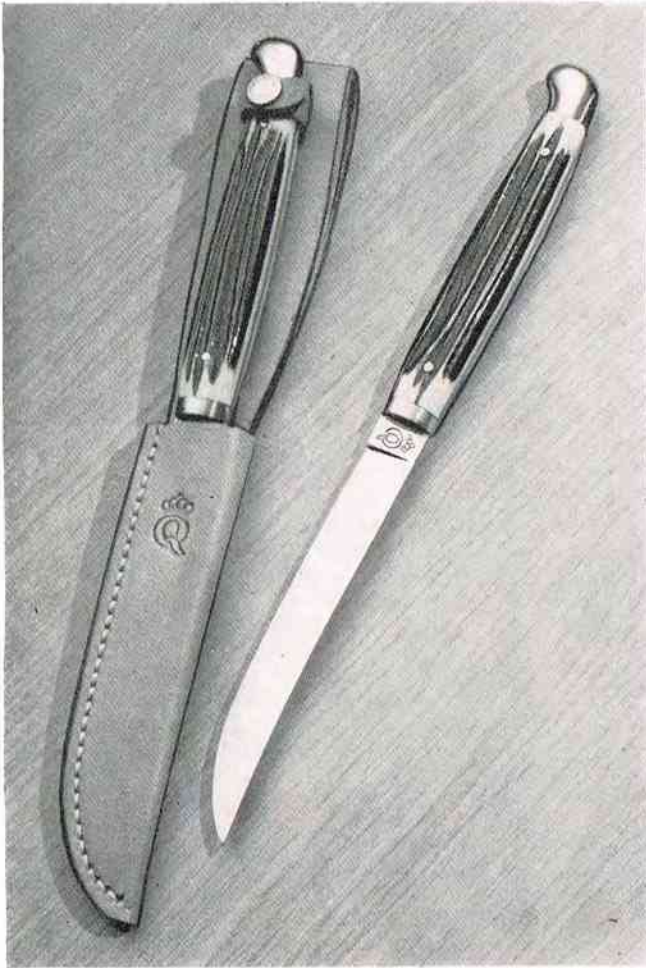
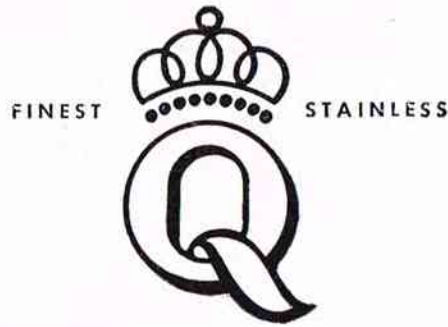


No. 90 Hunting Knife — Simulated pearl handle with $3\frac{5}{8}$ inch flat ground blade. The steel used in this knife is the finest in the world. It is stainless and is especially made to conform with Queen's rigid specifications. Will not rust or stain and because of Queen's secret tempering process, will stay sharp far longer than other knives. Complete in leather sheath made of top grain cowhide, saddle stitched with handsomely embossed design.



No. 95 Hunting Knife — Genuine *Frontier* bone stag handle with 5 inch saber ground blade with blood groove, $9\frac{1}{2}$ inches overall. The steel used in this knife is the finest in the world. It is stainless and is especially made to conform with Queen's rigid specifications. Will not rust or stain and because of Queen's secret tempering process, will stay sharp far longer than other knives. Complete in leather sheath made of top grain cowhide, saddle stitched with handsomely embossed design. The hunting knife for big game.

All Queen Hunting Knives are made of the Finest Stainless Steel



No. 96 Fish Filet Knife — Genuine *Frontier* bone stag handle with 4 $\frac{3}{4}$ inch blade. The steel used in this knife is the finest in the world. It is stainless and is especially made to conform with Queen's rigid specifications. Will not rust or stain and because of Queen's secret tempering process, will stay sharp far longer than other knives. Complete with leather sheath made of top grain cowhide, saddle stitched with handsomely embossed design. A favorite knife for filleting fish.



No. 98 Skinning Knife — Genuine *Frontier* bone stag handle with 4 inch scimitar shaped flat blade. The steel used in this knife is the finest in the world. It is stainless and is especially made to conform with Queen's rigid specifications. Will not rust or stain and because of Queen's secret tempering process, will stay sharp far longer than other knives. Complete in leather sheath made of top grain cowhide, saddle stitched with handsomely embossed design. Sportsman's favorite.

All Queen Hunting Knives are made of the Finest Stainless Steel

SYMBOL OF



QUALITY . . .



No. KA79 Knife and Axe Combination — One pound double bit Utility Axe. 15 inch hickory handle. Finest quality steel. Handsome leather Axe sheath made of top grain cowhide, saddle stitched with embossed design. Sheath slotted for carrying on the belt. 4 inch saber ground blade Hunting Knife with genuine *Frontier* bone stag handle in leather sheath made of top grain cowhide, saddle stitched with handsomely embossed design. Hunting knife and sheath attach to axe sheath and axe handle which makes a fine Knife and Axe combination.

No. DBA 79 — Double bit one pound Utility Axe. 15 inch hickory handle. Finest quality steel. Complete with fine leather sheath made of top grain cowhide, saddle stitched with handsomely embossed design. Slot in sheath for carrying on the belt.



No. SBA78 — Single bit 1 3/4 pound Camp Axe. 16 inch hickory handle. Finest quality steel. Complete with leather sheath, saddle stitched and riveted. Slot in sheath for carrying on the belt.

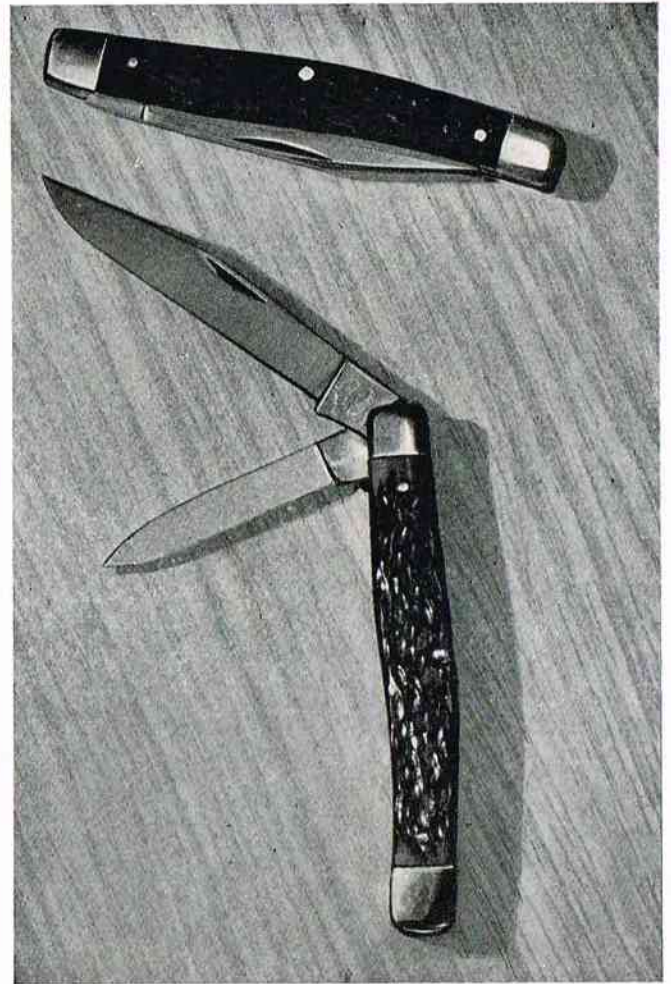
SYMBOL OF



QUALITY . . .



No. 1 Pruning or Hawkbill Pocket Knife — Rosewood handle. Brass linings, nickel silver finish. Complete with opening for leather thong. One 3-inch blade. $4\frac{1}{8}$ inches when closed. Sturdy, heavy-duty knife used by farmers, carpenters, electricians, etc.



No. 2 Serpentine Pattern — Two-blade pocket knife. Genuine bone stag handle. Double bolster, nickel silver finish with brass linings. One $2\frac{9}{16}$ -inch clip blade and one $2\frac{3}{4}$ -inch pen blade. $3\frac{1}{4}$ inches long when closed.

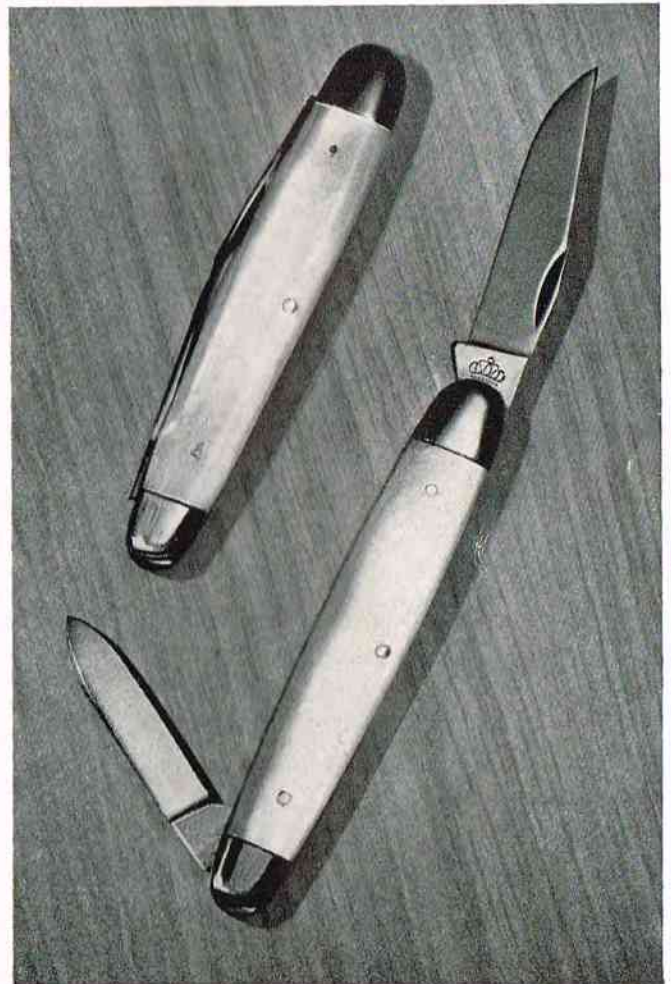
SYMBOL OF



QUALITY . . .



No. 3 Sleeveboard Pattern — Two-blade pen knife. Genuine bone stag handle. Double bolster, nickel silver finish with brass linings. One 2-inch clip blade and one 1-7/16-inch pen blade. 3-5/16 inches long when closed.



No. 4 Sleeveboard Pattern — Two-blade pen knife. Genuine Mother of Pearl handle. Double bolster, nickel silver finish with brass linings. One 2-inch clip blade and one 1-7/16-inch pen blade. 3-5/16 inches long when closed.

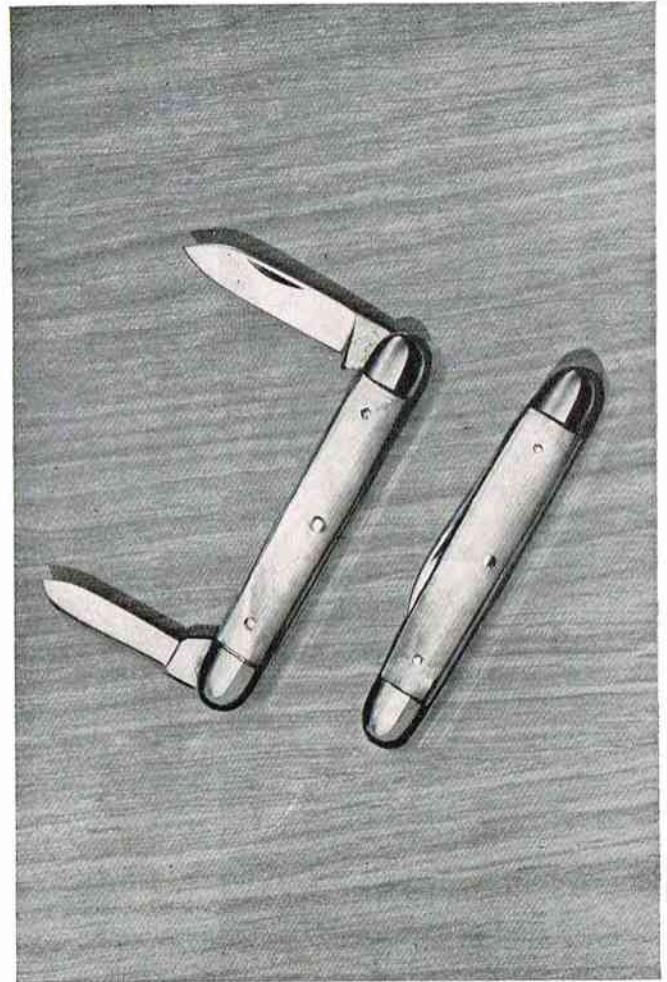
SYMBOL OF



QUALITY . . .



No. 5 Senator Pattern — Two-blade pen knife. Genuine bone stag handle. Double bolster, nickel silver finish with brass linings. One 1-7/16-inch spear blade and one 1-3/16-inch pen blade. 2½ inches long when closed.

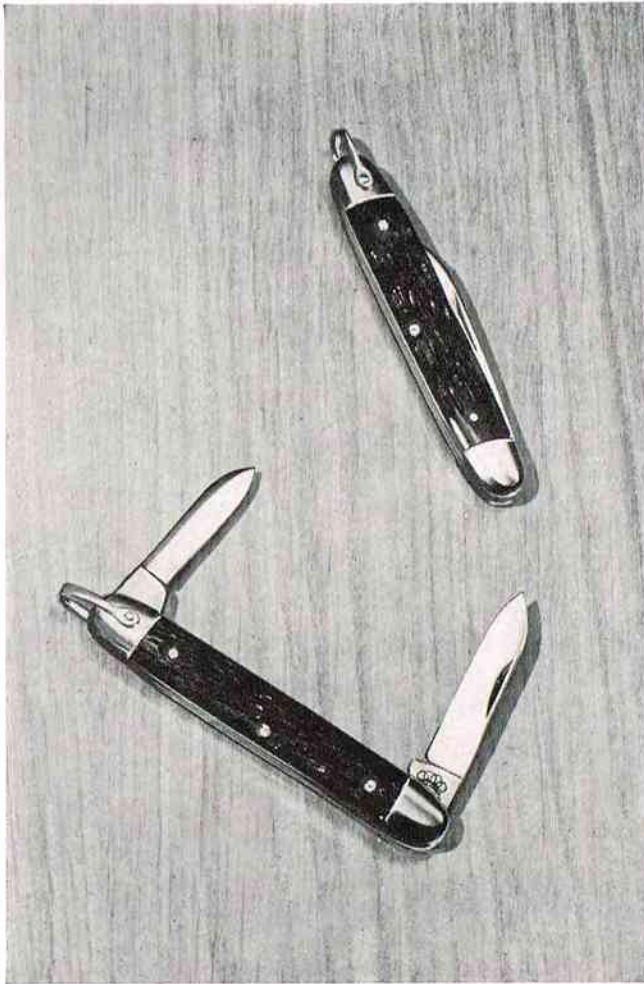


No. 6 Senator Pattern — Two-blade pen knife. Genuine Mother of Pearl handle. Double bolster, nickel silver finish with brass linings. One 1-7/16-inch spear blade and one 1-3/16-inch pen blade. 2½ inches long when closed.

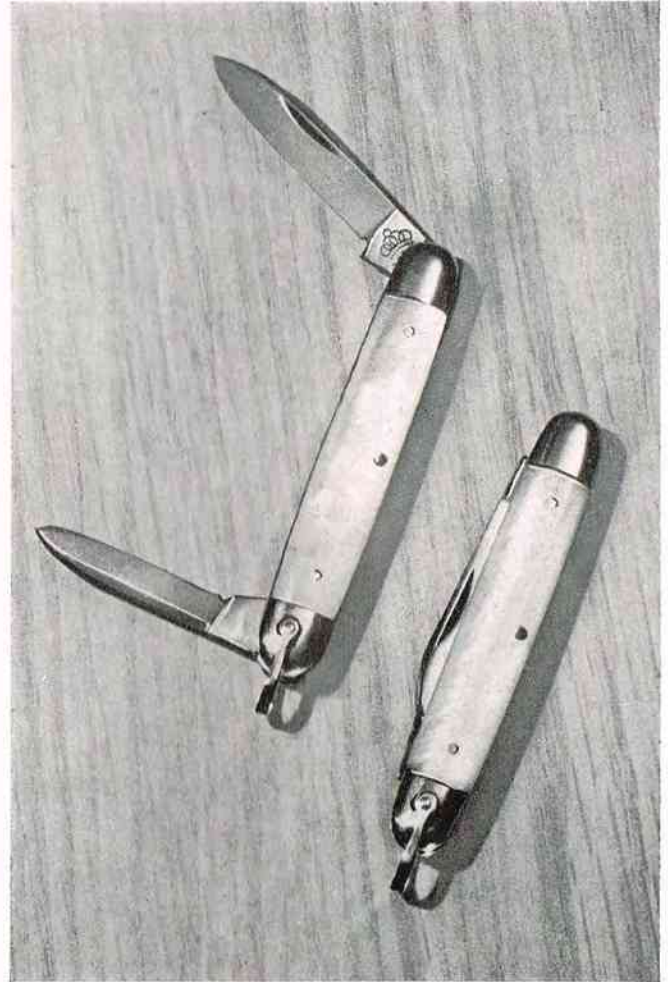
SYMBOL OF



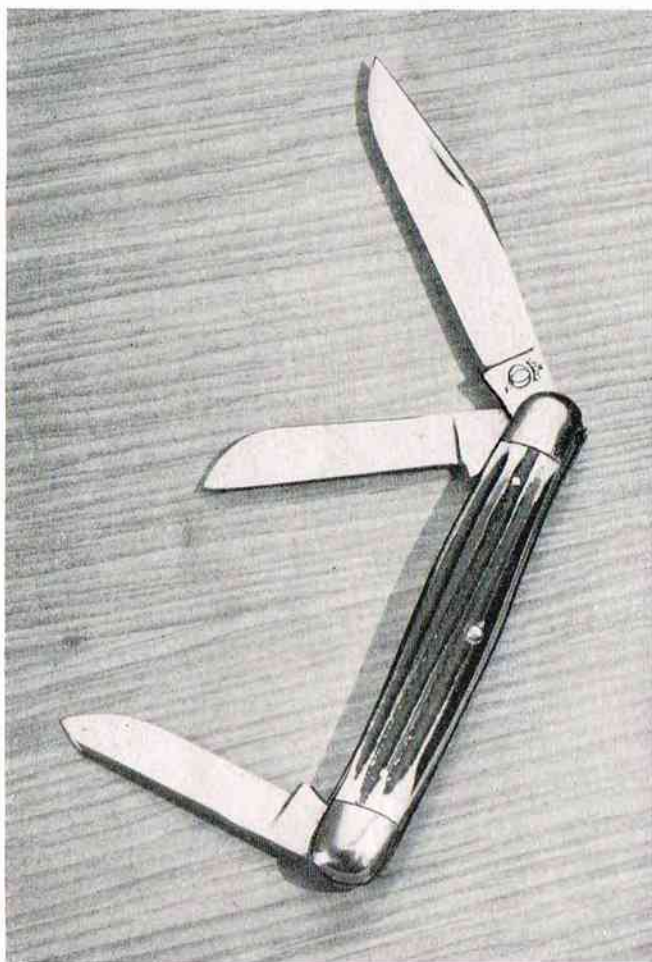
QUALITY . . .



No. 7 Senator Pattern — Two-blade pen knife. Genuine bone stag handle *with bale ring*. Double bolster, nickel silver finish with brass linings. One 1-7/16-inch spear blade and one 1-3/16-inch pen blade. 2½ inches long when closed.



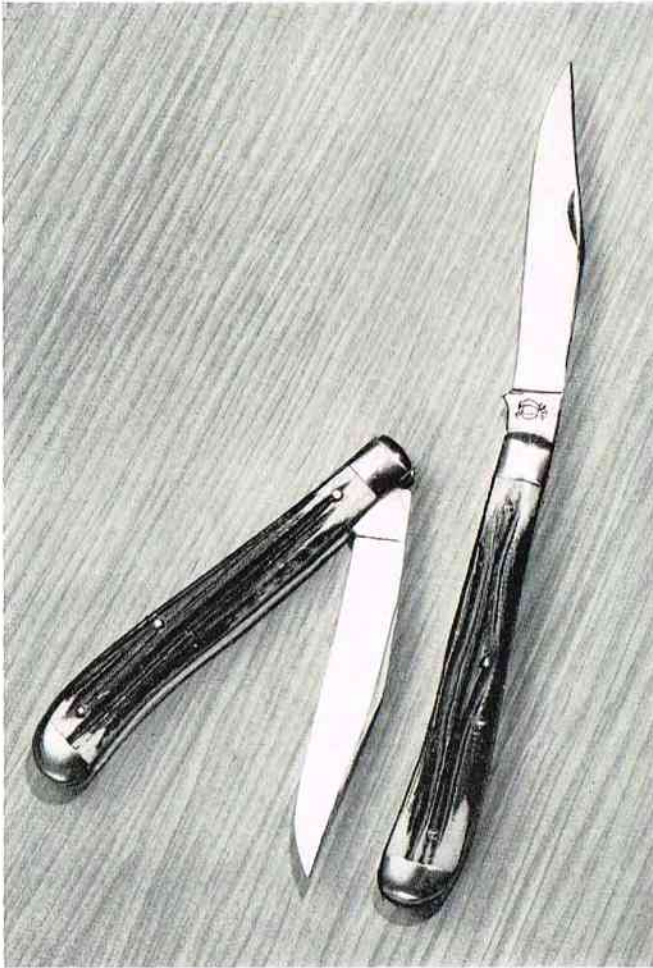
No. 8 Senator Pattern — Two-blade pen knife. Genuine Mother of Pearl handle *with bale ring*. Double bolster, nickel silver finish with brass linings. One 1-7/16-inch spear blade and one 1-3/16-inch pen blade. 2½ inches long when closed.



No. 9 Stockmen's Pattern — Three blade pocket knife. Genuine *Frontier* bone stag handle. Double bolster, nickel silver finish with brass linings. One 3 inch clip blade, one 2 inch spey blade and one $2\frac{1}{8}$ inch sheep foot blade. 4 inches long when closed.



No. 10 Heavy Duty Pattern — Two blade jack knife. Genuine *Frontier* bone stag handle. Double bolster, brass lined, nickel silver finish. One clip blade $2\frac{11}{16}$ inches long and one pen blade $2\frac{3}{16}$ inches long. $3\frac{11}{16}$ inches long when closed. The farmer's favorite.



No. 11 Switch Pattern — Single blade heavy duty pocket knife. Genuine *Frontier* bone stag handle. Double bolster, brass lined, nickel silver finish. $3\frac{5}{8}$ inch clip blade. $4\frac{1}{8}$ inches long when closed. A favorite of sportsmen and fishermen as well as for general use.



No. 12 Switch Pattern — Single-blade heavy duty pocket knife. Simulated pearl handle. Double bolster, brass lined, nickel silver finish. $3\frac{5}{8}$ inch clip blade. $4\frac{1}{8}$ inches long when closed. A favorite of sportsmen and fishermen as well as for general use.

SYMBOL OF



QUALITY . . .



No. 13 Switch Pattern — Single-blade heavy duty pocket knife. Amber handle. Double bolster, brass lined, nickel silver finish. $3\frac{5}{8}$ inch clip blade. $4\frac{1}{8}$ inches long when closed. A favorite of sportsmen and fishermen as well as for general use.

No. 41 — Same as above with brilliant red handle.

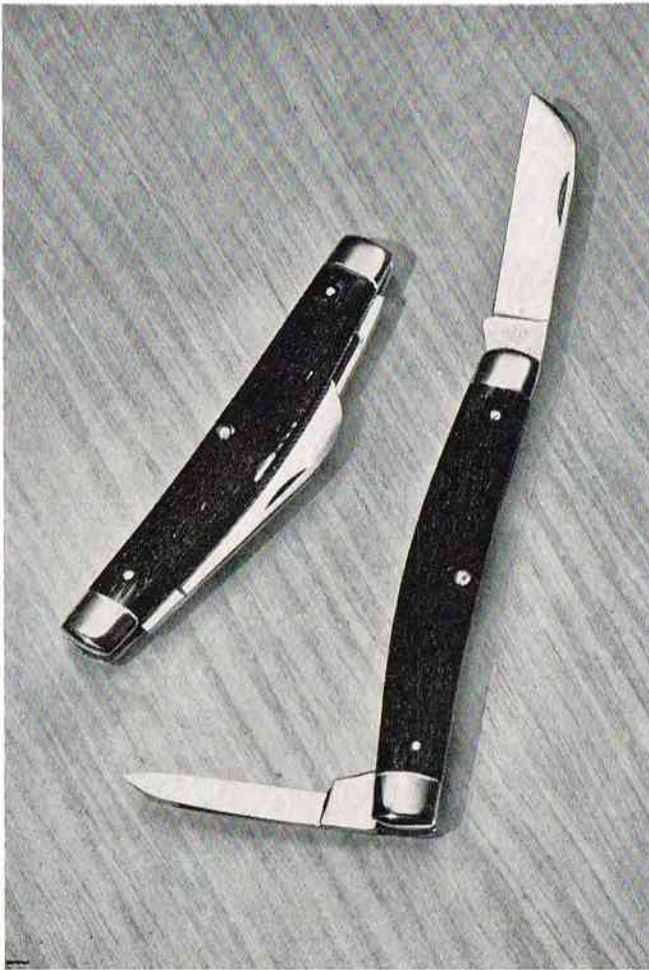


No. 14 Dogleg Pattern — Two-blade small jack knife. Genuine bone stag handle. Double bolster, brass lined, nickel silver finish. One $2\frac{1}{8}$ -inch clip blade and one $1\frac{7}{16}$ -inch pen blade. $2\frac{3}{4}$ inches long when closed. One of our most favored patterns.

SYMBOL OF



QUALITY . . .



No. 15 Congress Pattern — Two-blade pocket knife. Genuine bone stag handle. Double bolster, brass lined, nickel silver finish. One 2-inch sheep foot blade and one 1 ½ inch pen blade. 3 ½ inches long when closed. Always a leading number.



No. 16 Serpentine Pattern — Three blade pocket knife. Genuine *Frontier* bone stag handle. Double bolster, nickel silver finish with brass linings. One 2-9/16 inch clip blade, one 1 ⅞ inch spey blade and one 1-11/16 inch pen blade. 3 ¼ inches long when closed. A stable number.

SYMBOL OF



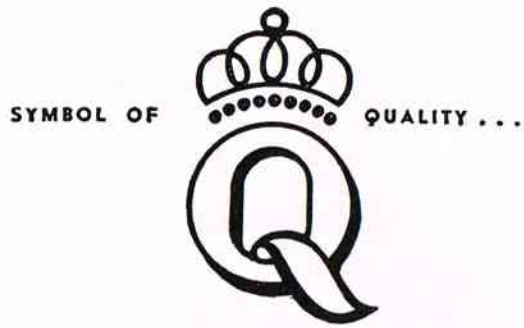
QUALITY . . .



No. 17 Amber Dogleg Pattern — Two blade small jack knife. Amber handle. Double bolster, brass lined, nickel silver finish. One $2\frac{1}{8}$ inch clip blade and one $1\frac{7}{16}$ inch pen blade. $2\frac{3}{4}$ inches long when closed. One of our most favored patterns.



No. 18 Spear Point Special — Two blade jack knife. Genuine *Frontier* bone stag handle. Double bolster, brass lined, nickel silver finish. One spear point blade is $2\frac{11}{16}$ inches long and one pen blade is $2\frac{3}{16}$ inches long. $3\frac{11}{16}$ inches long when closed. Textile workers and mariners prefer this number.



No. 19 Folding Fishing Knife complete with disgorger and scaler. Genuine bone stag handle. Double bolster, brass lined, nickel silver finish. Very sturdily constructed. Large clip blade $3 \frac{5}{8}$ inches long. Disgorger, scaler and bottle opener blade $3 \frac{5}{8}$ inches long. Overall size 5 inches long. A standard pocket knife for fishermen and campers.



No. 20 Folding Outdoors Knife—Very sturdy construction. Genuine bone stag handle. Double bolster, brass lined, nickel silver finish. One large clip blade $3 \frac{5}{8}$ inches long. Knife when closed 5 inches overall. A popular number.

SYMBOL OF



QUALITY . . .

13 21
6



No. 21 Spear Point Pen Pattern — Two-blade pen knife. Genuine bone stag handle. Double bolster, nickel silver finish with brass linings. One 2-inch spear point blade and one 1-7/16 inch pen blade. 3-5/16 inches long when closed.



No. 22 Barlow Knife, Clip Pattern — Here is what you have been waiting for since the end of the war. Our Barlow Knife has always enjoyed top popularity. Genuine bone stag handle. Heavy duty bolster. Cleanly polished inside of handle. One large clip blade 2-5/16 inches long and one pen blade 1 7/8 inches long. 3 1/2 inches overall when closed.

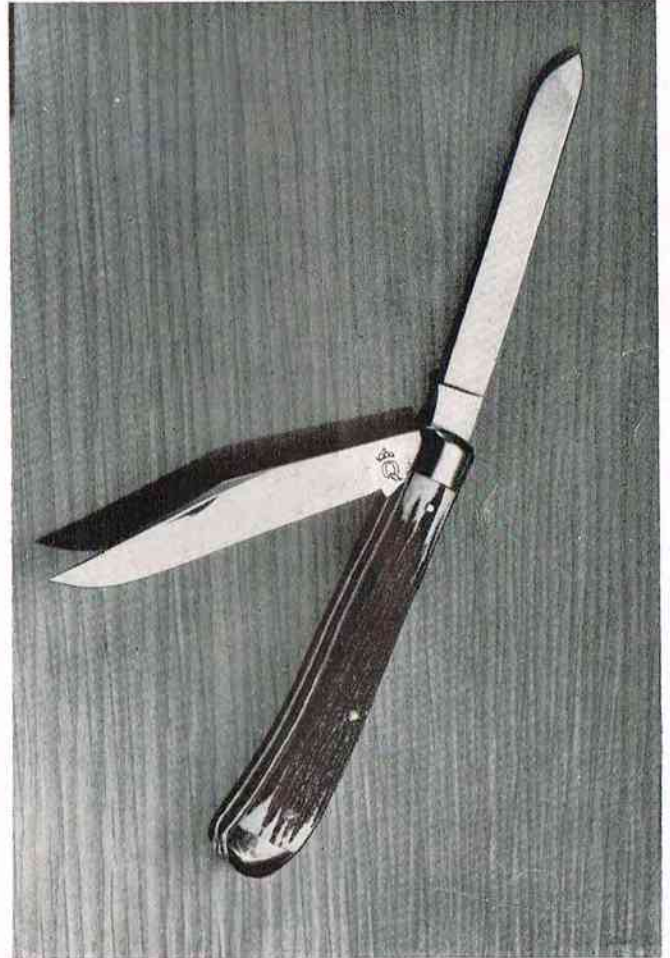
SYMBOL OF



QUALITY . . .



No. 23 Barlow Knife, Spear Point Pattern — Here is what you have been waiting for since the end of the war. Our Barlow Knife has always enjoyed top popularity. Genuine bone stag handle. Heavy duty bolster. Cleanly polished inside of handle. One large spear point blade 2-5/16 inches long and one pen blade 1 7/8 inches long. 3 1/2 inches overall when closed.



No. 24 Trapper's Pattern — Genuine *Frontier* bone stag handle. Sturdily constructed. Double bolster, nickel silver finish with brass linings. One 3 5/8 inch clip blade; one spey blade 3 5/8 inches long. 4 inches long when closed. Standard pattern.

SYMBOL OF



QUALITY . . .



No. 25 Jet Push Button Pattern with Safety Lock — Our own exclusive patented knife. Something brand new! Opens like a jet plane takes off. Double bolster, nickel silver finish with brass linings. Sturdily constructed. One heavy duty large clip blade 3-15/16 inches long. 5 inches long when closed.



No. 27 Sheepfoot Barlow Knife — Our Barlow Knife has always enjoyed top popularity. Genuine bone stag handle. Heavy duty pattern. Cleanly polished inside of handle. One large Sheepfoot blade 2 5/8 inches long and one pen blade 1 7/8 inches long. 3 1/2 inches overall when closed.

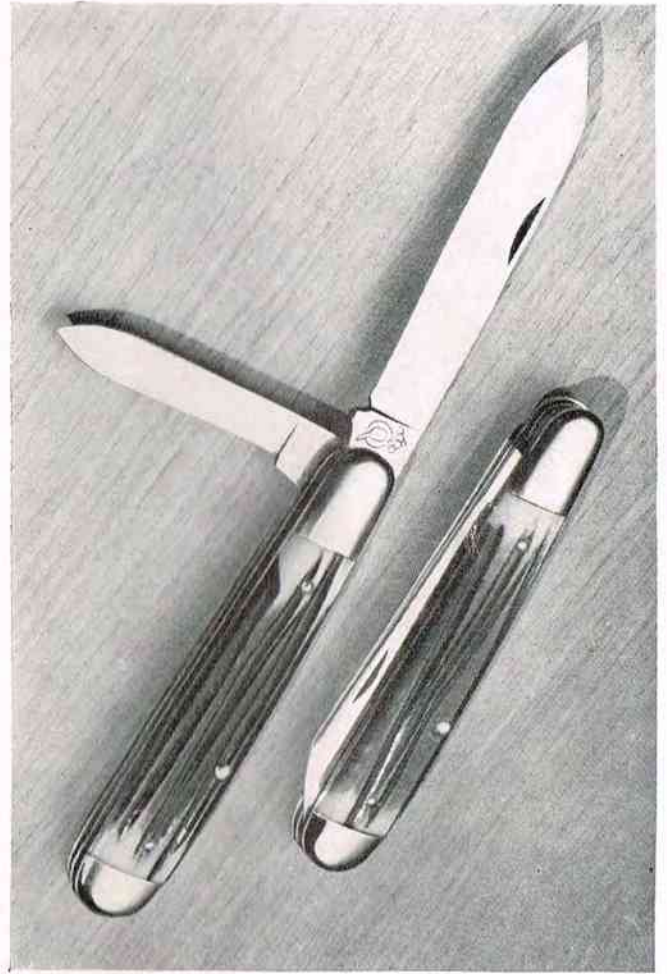
SYMBOL OF



QUALITY . . .



No. 28 Large Farmer's Knife, Clip Pattern—Large 2 blade jack knife. Genuine Frontier bone stag handle. Double bolster, brass linings, nickel silver finish. Large clip blade is 3 1/2 inches long and pen blade 2 3/8 inches long. 4 1/2 inches overall when closed.

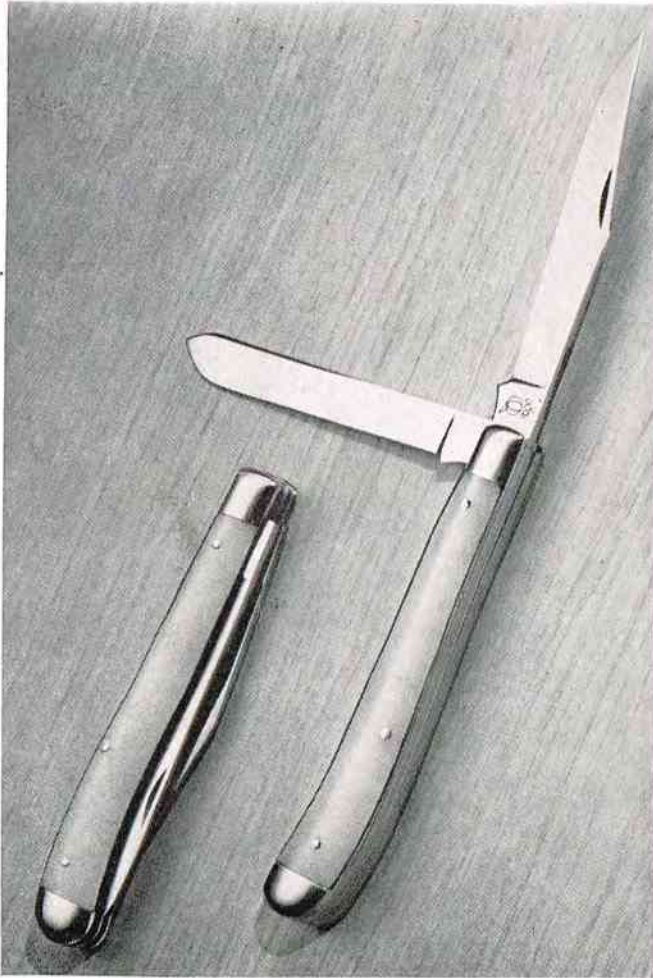


No. 29 Large Farmer's Knife, Spear Point Pattern—Large 2 blade jack knife. Genuine Frontier bone stag handle. Double bolster, brass linings, nickel silver finish. Large spear point blade is 3 1/2 inches long and pen blade 2 3/8 inches long. 4 1/2 inches overall when closed.

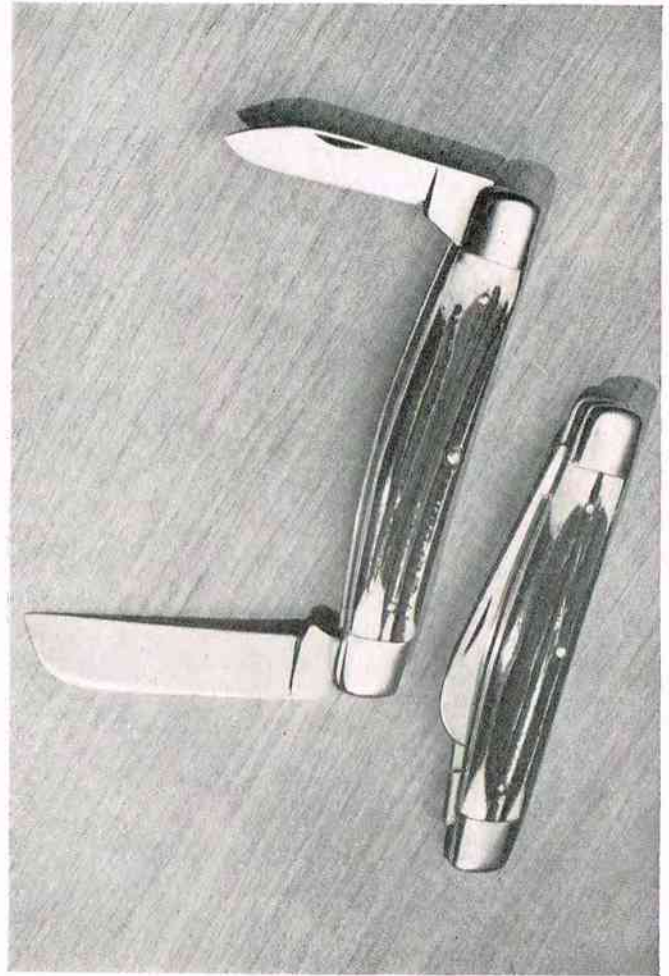
SYMBOL OF



QUALITY . . .



No. 30 Trapper's Pattern, Amber Handle—Sturdily constructed. Double bolster, nickel silver finish with brass linings. One $3\frac{5}{8}$ inch clip blade; one spey blade $3\frac{5}{8}$ inches long. 4 inches long when closed. Standard Pattern.

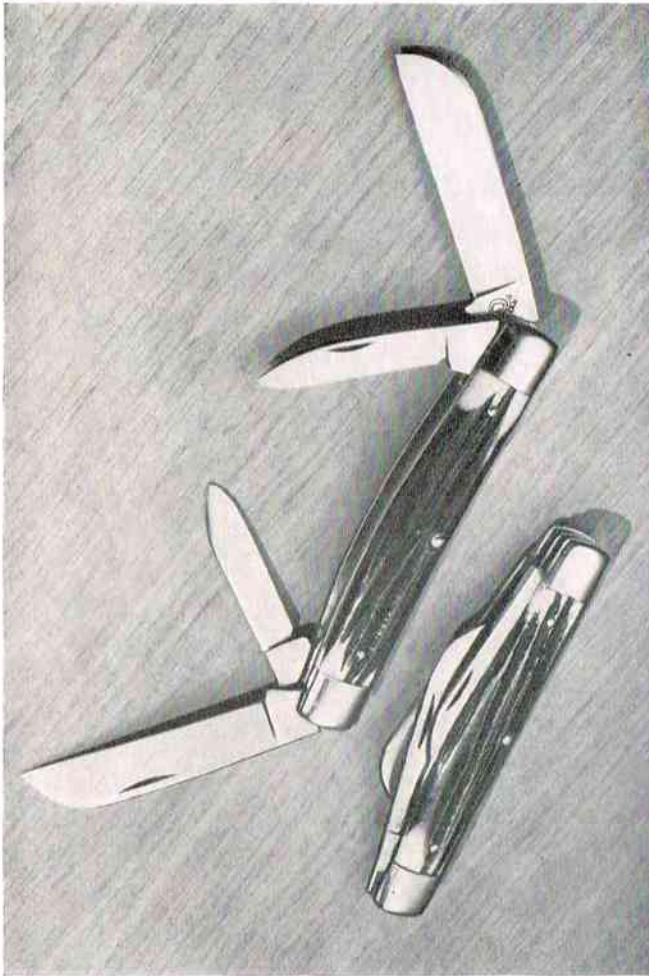


No. 31 Large two blade Congress Pattern—Genuine Frontier bone stag handle. Made of high carbon finest selected tool steel. Double bolster, nickel silver finish with brass linings. $2\frac{1}{2}$ inch sheepfoot blade and a 2 inch pen blade. 4 inches long when closed.

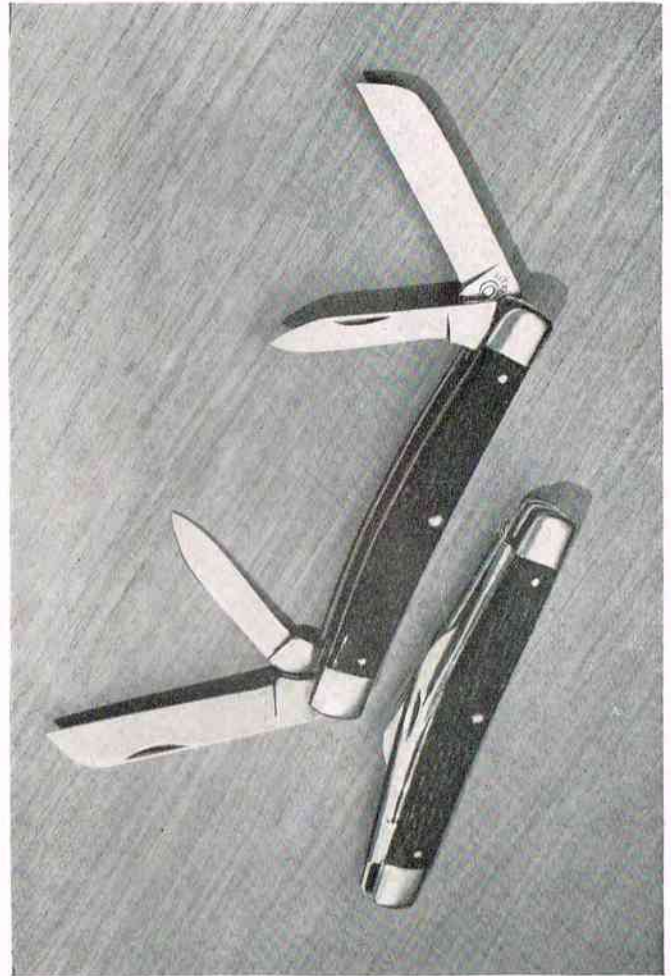
SYMBOL OF



QUALITY . . .



No. 32 Large four blade Congress Pattern—Genuine Frontier bone stag handle. Made of high carbon finest selected tool steel. 2½ inch Sheepsfoot blade on each end and also a 2 inch pen blade at each end. 4 inches overall when closed. A favorite knife of carpenters and skilled workmen.

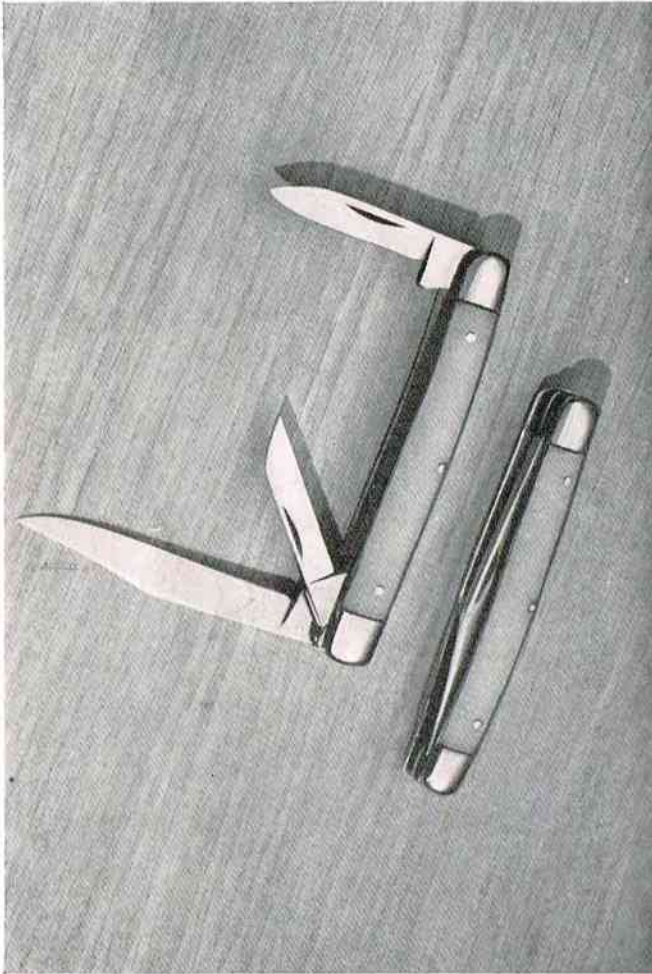


No. 33 Small Four Blade Congress Pattern—Genuine bone stag handle. Double bolster, brass lining, nickel silver finish. 2 inch sheepsfoot blade at each end and 1¾ inch pen blade at each end. 3½ inches overall when closed.

SYMBOL OF



QUALITY . . .



No. 34 Small Three Blade Serpentine Pattern—Amber handle. Double bolster, brass lined, nickel silver finish. 2 inch clip blade and $1\frac{5}{8}$ inch sheep's foot blade and $1\frac{5}{8}$ inch pen blade. $2\frac{5}{8}$ inches long when closed. An outstanding number.

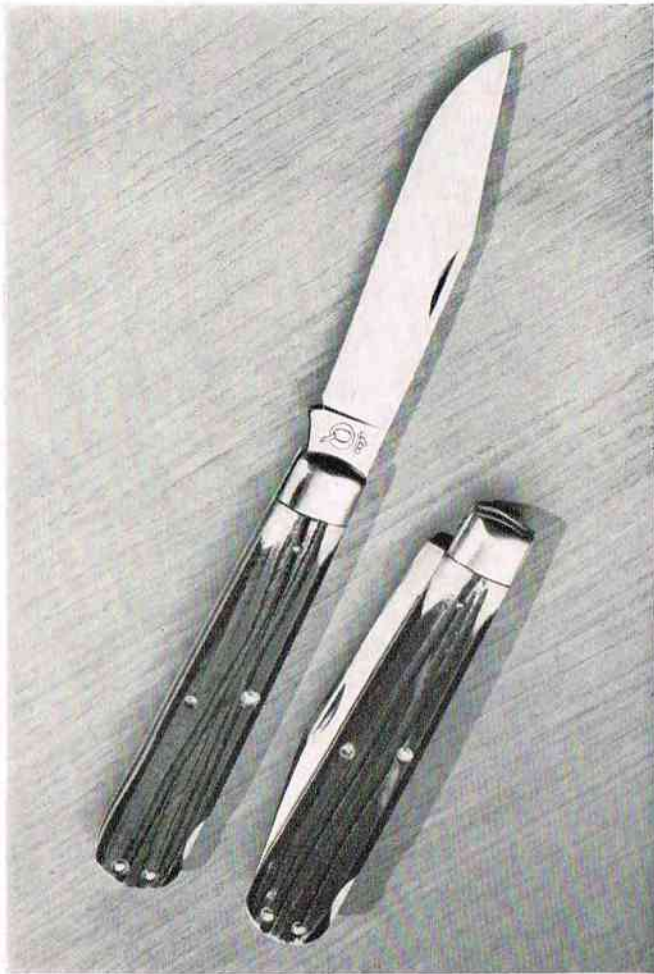


No. 35 Small Three Blade Serpentine Pattern—Stagged handle. Double bolster, brass lined, nickel silver finish. 2 inch clip blade and $1\frac{5}{8}$ inch sheep's foot blade and $1\frac{5}{8}$ inch pen blade. $2\frac{5}{8}$ inches long when closed.

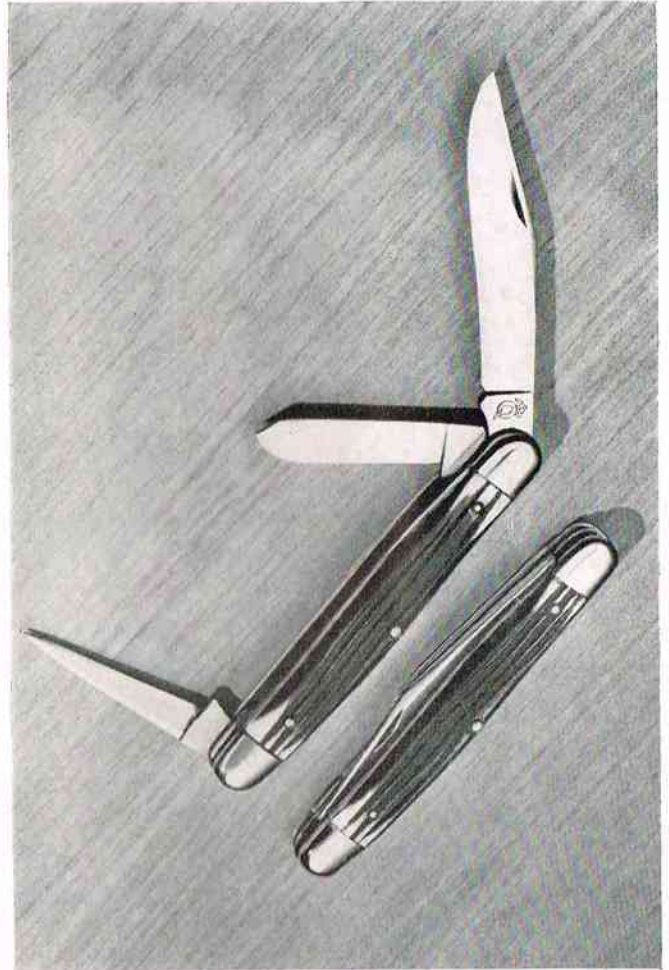
SYMBOL OF



QUALITY . . .



No. 36 One Blade Lock Pattern — Genuine Frontier bone stag handle. Made of high carbon finest selected tool steel. Brass lined, nickel silver finish. One large clip blade $3\frac{5}{8}$ inches long. $4\frac{1}{2}$ inches long overall when closed. Blade of knife locks rigidly when opened.

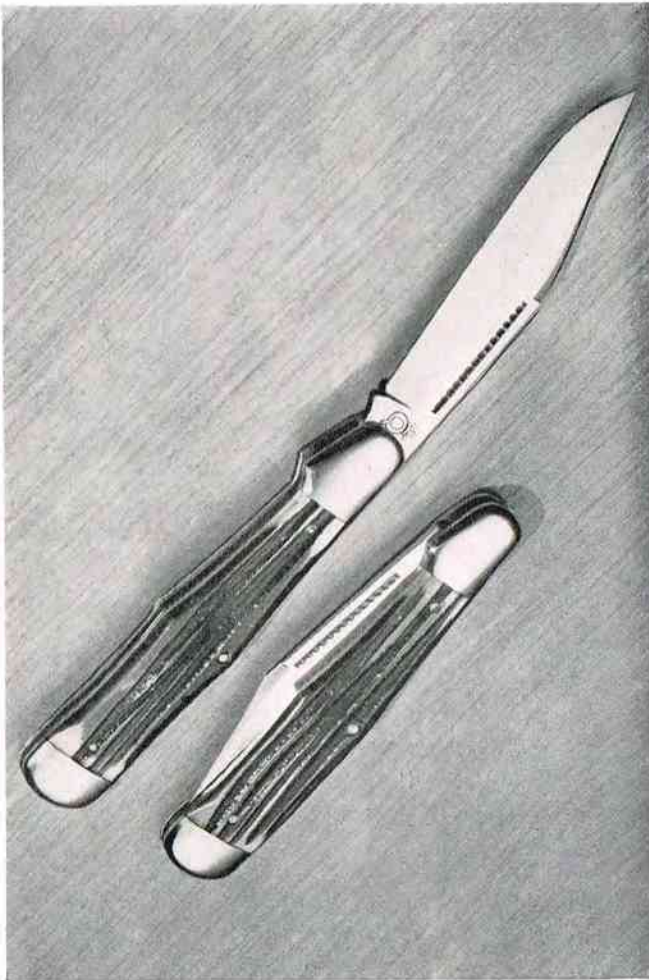


No. 37 Stockmen's Belt Punch Pattern — Large three blade knife. Genuine Frontier bone stag handle. Made of high carbon finest selected tool steel. Double bolster, nickel silver finish with brass linings. One 3 inch clip blade, one $1\frac{7}{8}$ inch spey blade, and one 2 inch leather belt punch blade. 4 inches long when closed.

SYMBOL OF



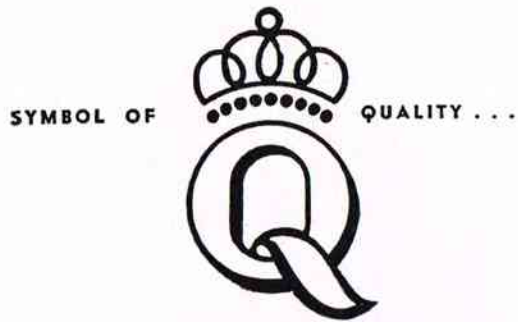
QUALITY . . .



No. 38 Jumbo One Blade Pattern — Genuine Frontier bone stag handle. Made of high carbon finest selected tool steel. Sabre ground, heavy duty single blade knife. Double bolster, brass linings, nickel silver finish. One large clip blade 4 1/4 inches long. 5 1/4 inches long overall when closed.



No. 39 Heavy Duty Big Pocket Knife — Genuine Frontier bone stag handle. 5 1/4 inches overall when closed. Double bolster, brass linings. Pocket blade 3 3/4 inches in length, sabre ground. Skinning blade 3 7/8 inches in length, flat ground. The steel used in this knife is the finest in the world. It is stainless and is especially made to conform with Queen's rigid specifications. Will not rust or stain and because of Queen's secret tempering process, it will stay sharp far longer than other knives.



HAIR CLIPPERS



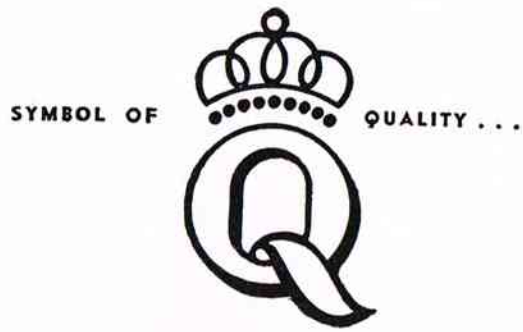
No. Q0007—Small hand hair clipper for fine work.



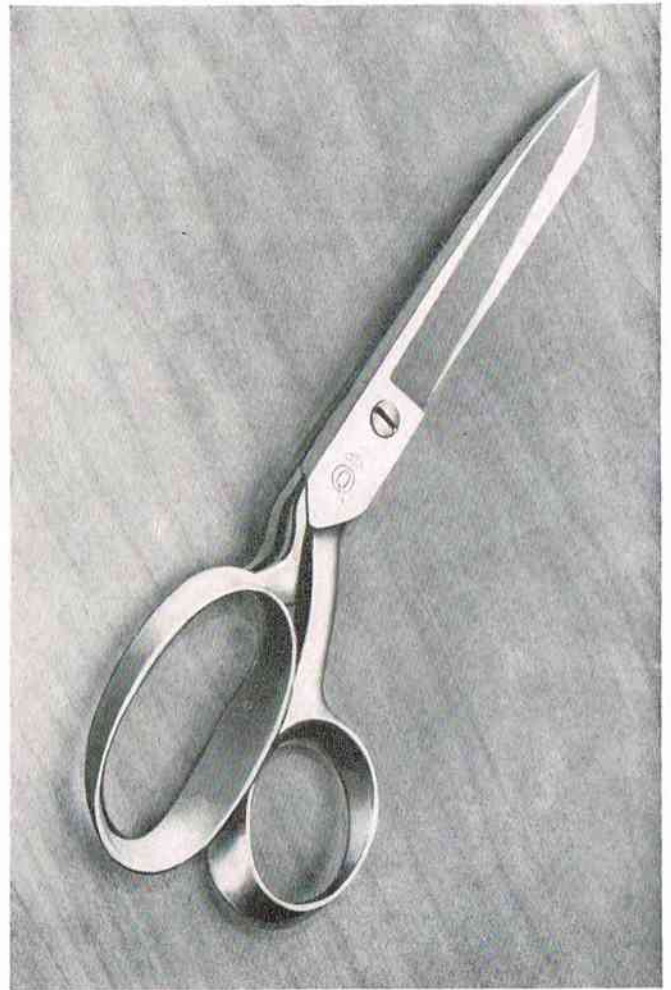
No. Q0008—Large professional hand hair clipper for hair cutting and barbering.



Electric Hair Clipper — Works on either electric current.



No. 219—7½-inch Professional Barber Shear—Electric furnace hot forged steel. Tempered and Rockwell tested to our high standards. Fully polished nickel finish. Holds keen cutting edge. Perfectly balanced.



No. 220—8-inch Bent Trimmer Shear—Ideal for dressmaking. Full nickel finish. Made of electric furnace hot forged steel. Tempered and Rockwell tested to our high standards. Holds keen cutting edge.

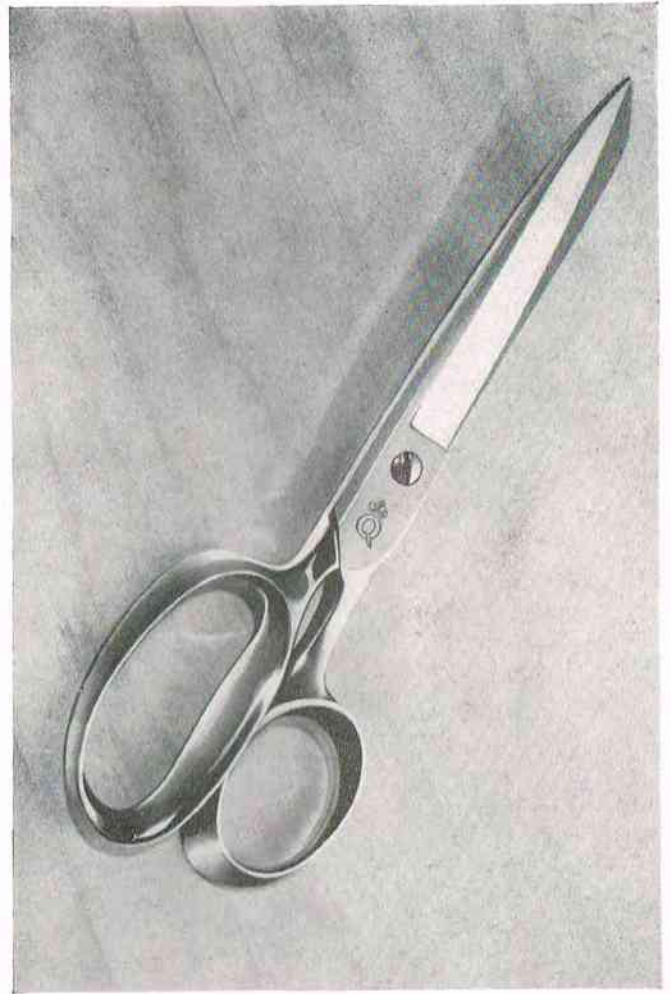
SYMBOL OF



QUALITY . . .



No. 221—7-inch Straight Heavy Trimmer Shear—For heavy duty cutting and household use. Full nickel finish. Made of electric furnace hot forged steel. Tempered and Rockwell tested to our high standards. Holds keen cutting edge.



No. 222—8-inch Straight Heavy Trimmer Shear—For extra heavy cutting and household use. Full nickel finish. Made of electric furnace hot forged steel. Tempered and Rockwell tested to our high standards. Holds keen cutting edge.

SYMBOL OF



QUALITY . . .



No. 223—6-inch Light Trimmer Shear

—For dressmaking and household use. Full nickel finish. Made of electric furnace hot forged steel. Tempered and Rockwell tested to our high standards. Holds keen cutting edge.



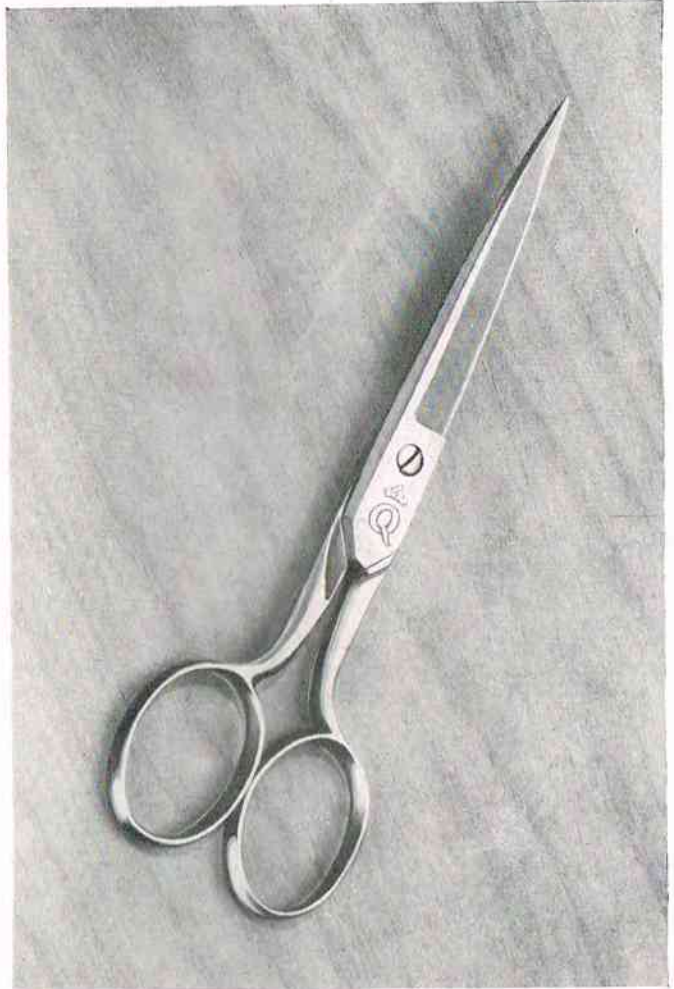
No. 224—7-inch Light Trimmer Shear—

For dressmaking and household use. Full nickel finish. Made of electric furnace hot forged steel. Tempered and Rockwell tested to our high standards. Holds keen cutting edge.



No. 225—8-inch Light Trimmer Shear

—For dressmaking and household use. Full nickel finish. Made of electric furnace hot forged steel. Tempered and Rockwell tested to our high standards. Holds keen cutting edge.



No. 226—6-inch Embroidery Trimmer Scissors

—For embroidery and other delicate work. Two sharp points. Full nickel finish. Made of electric furnace hot forged steel. Tempered and Rockwell tested to our high standards. Holds keen cutting edge.

SYMBOL OF



QUALITY . . .



No. 227—5-inch Embroidery Trimmer Scissors—For embroidery and other delicate work. Two sharp points. Full nickel finish. Made of electric furnace hot forged steel. Tempered and Rockwell tested to our high standards. Holds keen cutting edge.



No. 228—4-inch Embroidery Trimmer Scissors—For embroidery and other delicate work. Two sharp points. Full nickel finish. Made of electric furnace hot forged steel. Tempered and Rockwell tested to our high standards. Holds keen cutting edge.

SYMBOL OF



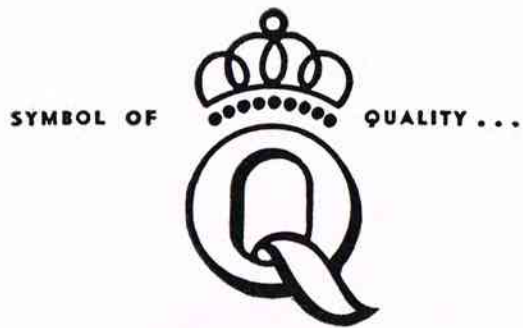
QUALITY . . .



No. 229 4-inch Pocket Scissors — For Store clerks, Mill workers, school and household use. Two blunt points. Full nickel finish. Made of electric furnace hot forged steel. Tempered and Rockwell tested to our high standards. Holds keen cutting edge.



No. 231 Buttonhole Scissors — For making buttonholes in any type of garment. Adjustable screw and set nut can be regulated for any size or length buttonhole desired. Indispensable for the dressmaker or the tailor either in the home or the shop.



Hand Hammered Rough Finish Kitchen Line — Ground out of whole stock high carbon steel. Full tang. Rosewood handles. Very strong rivets. We especially make these knives for heavy duty and we recommend them to you as excellent value. Reading from top to bottom they are as follows:

No. S-8 Slicing Knife.....	8 inch blade
No. B-8 Butcher Knife.....	8 inch blade
No. B-7 Butcher Knife.....	7 inch blade
No. B-6 Butcher Knife.....	6 inch blade
No. BO6 Boning Knife.....	6 inch blade
No. B-4 Butcher Knife.....	4 inch blade
No. P-3 Paring Knife.....	3 inch blade

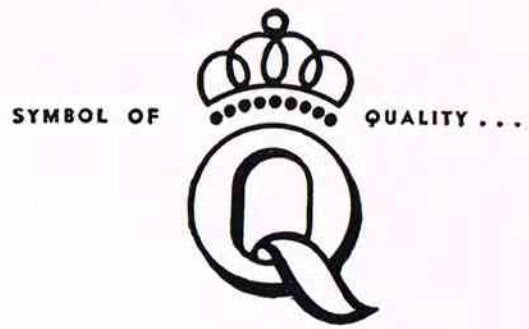


FORMICA LINE — The steel used in these knives is the finest in the world. It is stainless and is especially made to conform with Queen's rigid specifications. Will not rust or stain and because of Queen's secret tempering process, they will stay sharp far longer than other knives. New solid piece construction makes it impossible for any food particles to lodge in any part of these knives. Formica handles are pervious to heat, fire, water and will give very long life. Beautifully designed and scientifically balanced. Surgical grind. Reading from top to bottom as follows:

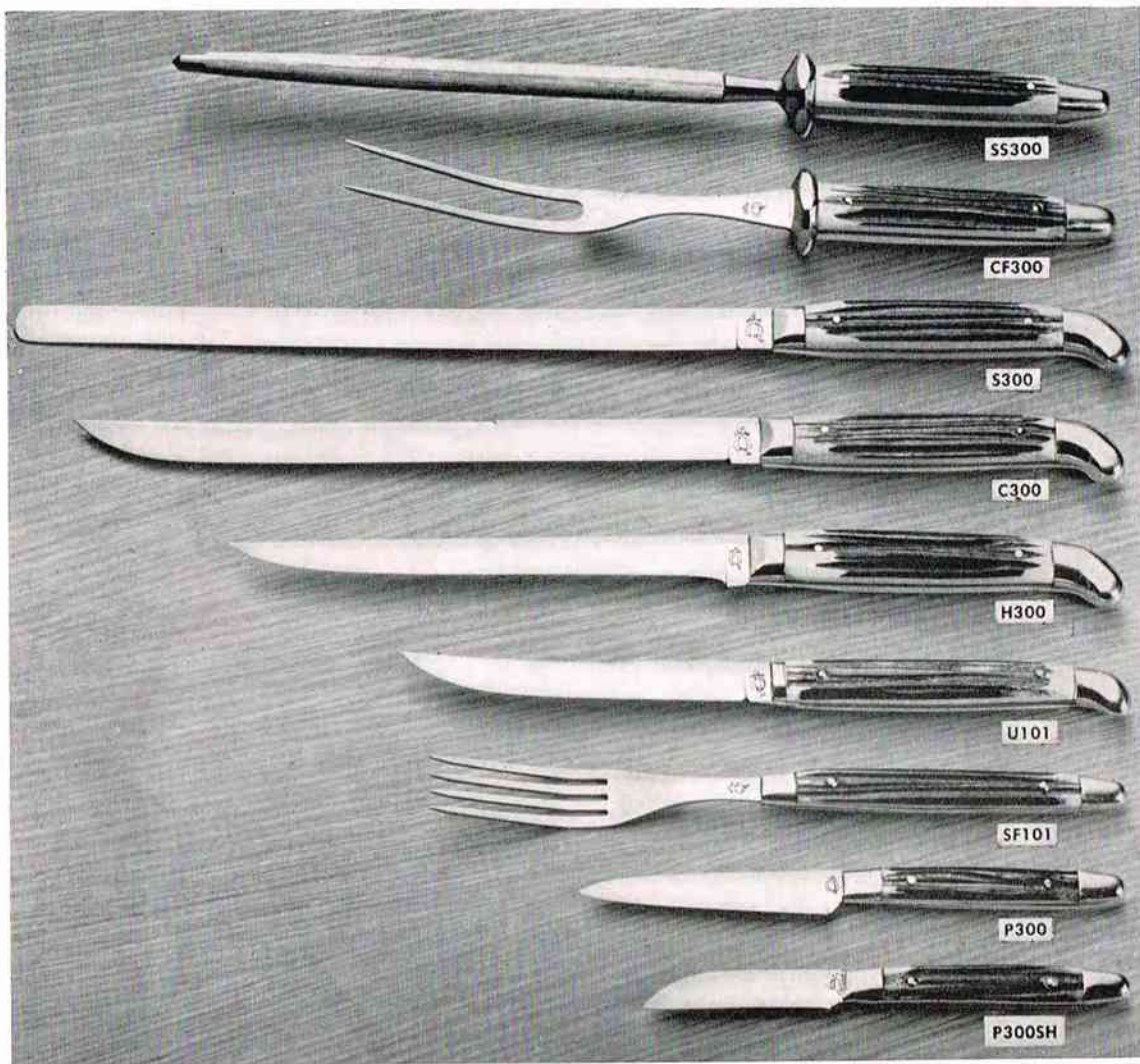
No. FC400 French Cook Knife.....	8 inch blade
No. S401 Slicer.....	8 inch blade
No. B408 Butcher Knife.....	8 inch blade
No. B407 Butcher Knife.....	7 inch blade
No. B406 Butcher Knife.....	6 inch blade
No. U401 Steak Knife.....	4-11/16 inch blade
No. P403 Paring Knife.....	3 inch blade
No. P403sh Paring Knife.....	2 1/4 inch blade



FORMICA STEAK SET—No. 5406—6 Formica Steak Knives individually set in a beautiful solid walnut box, velveteen lined.

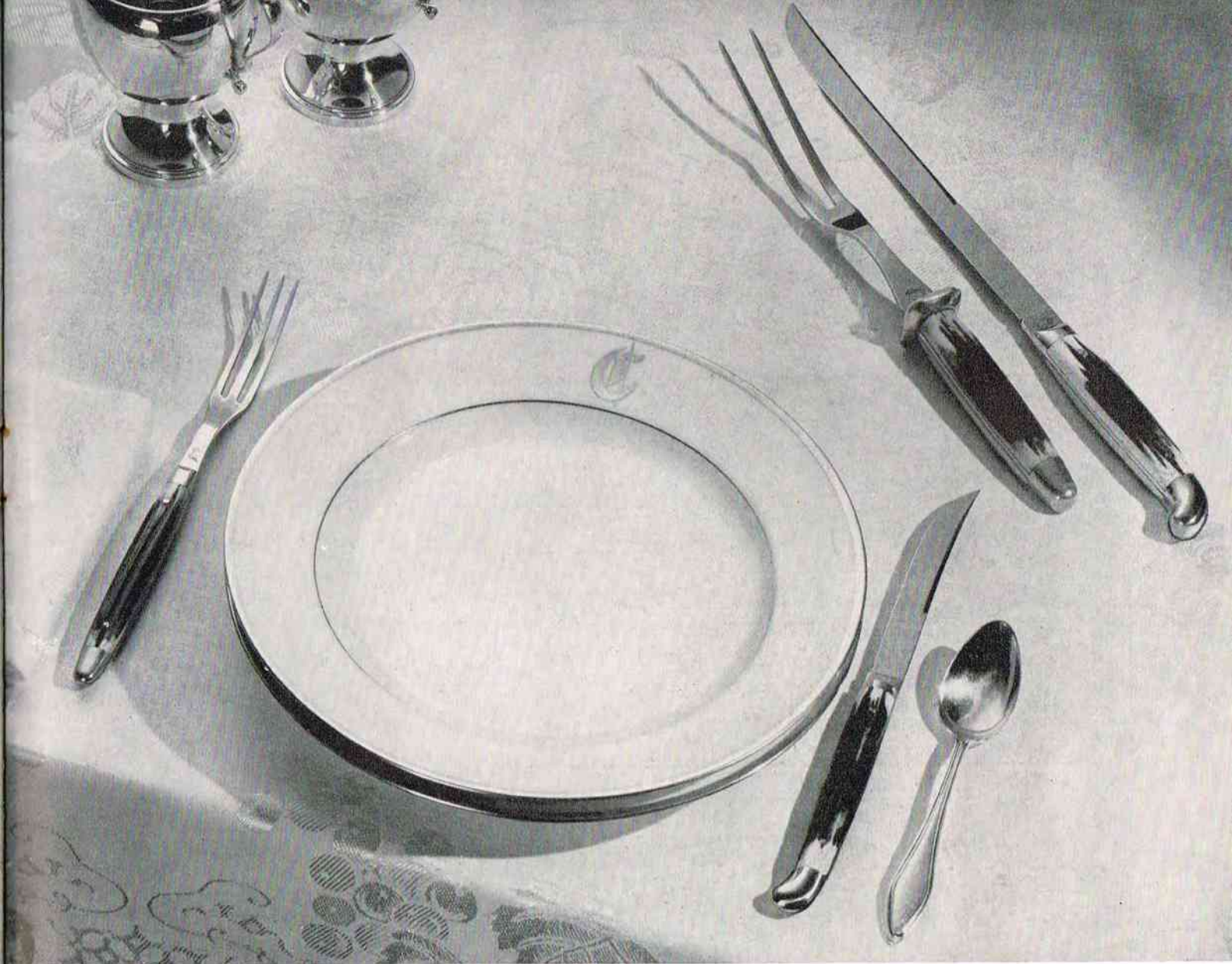


FORMICA STEAK SET — No.5408 — 8 Formica Steak Knives individually set in a beautiful solid walnut box lined with velveteen.



DE LUXE MATCHED TABLE LINE — We consider this line our finest creation. The steel used in these knives is the finest in the world. It is stainless and is especially made to conform with Queen's rigid specifications. Will not rust or stain and because of Queen's secret tempering process, they will stay sharp far longer than other knives. Solid piece construction makes it impossible for any food particles to lodge in any part of the knives. The Genuine Bone Stag handles mean eternal handle life and best of all hand washing will not mar or dull the appearance of these handles but rather they improve with age. Scientifically designed and balanced to fit comfortably in the hand they make carving and eating a more delightful pleasure. Reading from top to bottom as follows:

No. SS300 Sharpening Steel.....	12 ½ inch steel
No. CF300 Carving Fork.....	10 ½ inch fork
No. S300 Slicer.....	10 inch slicing knife
No. C300 Carver.....	9 inch carving knife
No. H300 Handy Knife.....	6 ¾ inch blade
No. U101 Individual steak knife.....	4 ¼ inch blade
No. SF101 Matching steak fork.....	9 inch fork
No. P300 Paring Knife.....	3 inch blade
No. P300sh Paring Knife.....	2 ¼ inch blade



Queen Table Cutlery adds grace and charm to your table and makes carving and eating a more delightful pleasure



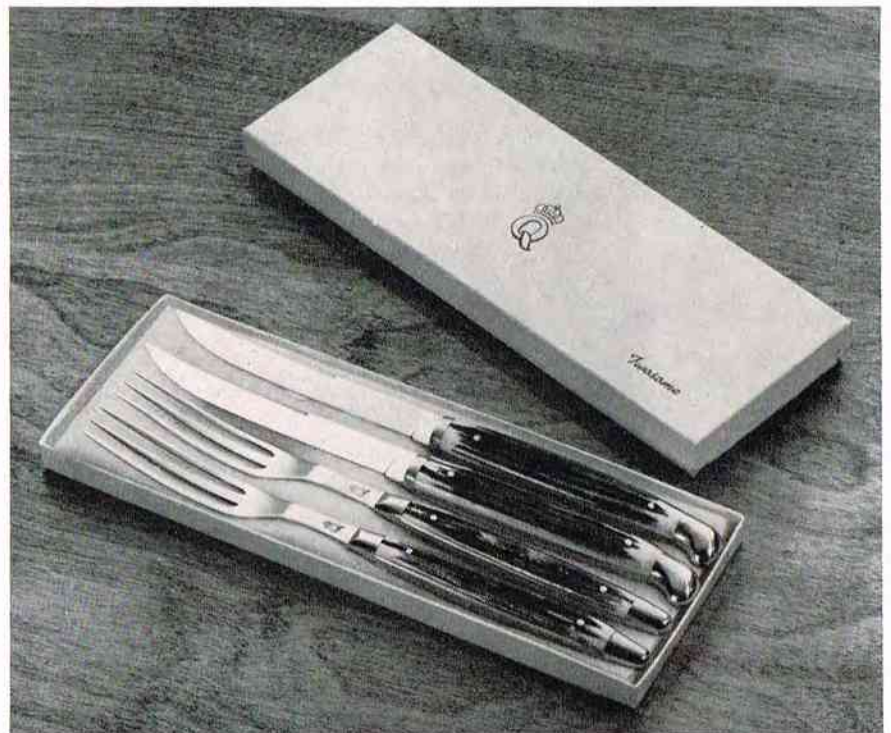
DELUXE MATCHED

Table Cutlery Chests



No. S102 "Steak Duet"—
Two Steak Knives in attractive
gift box.

No. SF103 "Twosome"—
Two De Luxe Steak Knives and
two matching De Luxe Steak
Forks in attractive gift box.
Or four knives or four forks.



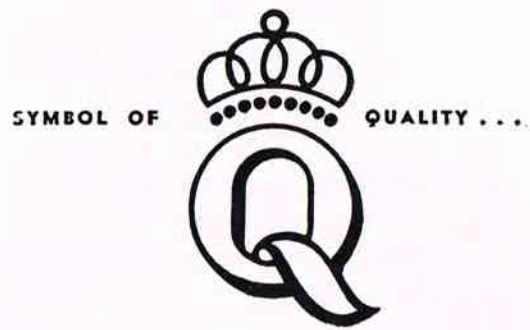


No. S106 De Luxe Steak Set — Six De Luxe Steak Knives individually set in a beautiful solid walnut case lined with velveteen. This is by far the biggest selling number in our entire line.



No. SF106 De Luxe Knife and Fork Set— Six De Luxe Steak Knives and six matching De Luxe Steak Forks individually set in a beautiful solid walnut case lined with velveteen.

No. SF104 De Luxe Knife and Fork Set— Same as above except four De Luxe Steak Knives and four matching De Luxe Steak Forks.



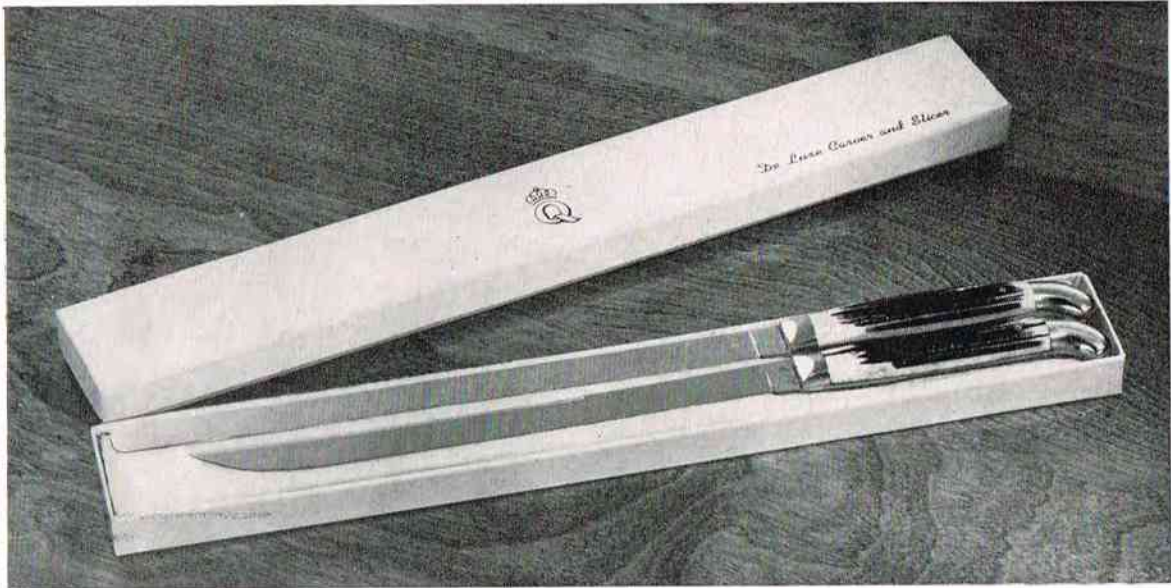
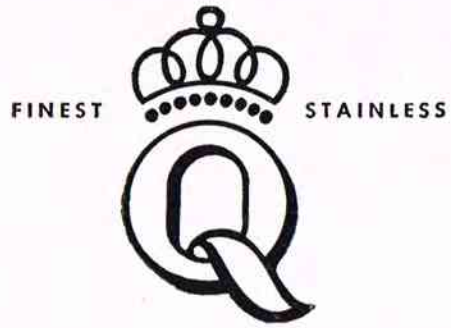
No. S108 De Luxe Steak Set— Eight De Luxe Steak Knives individually set in a beautiful solid walnut case lined with velveteen.



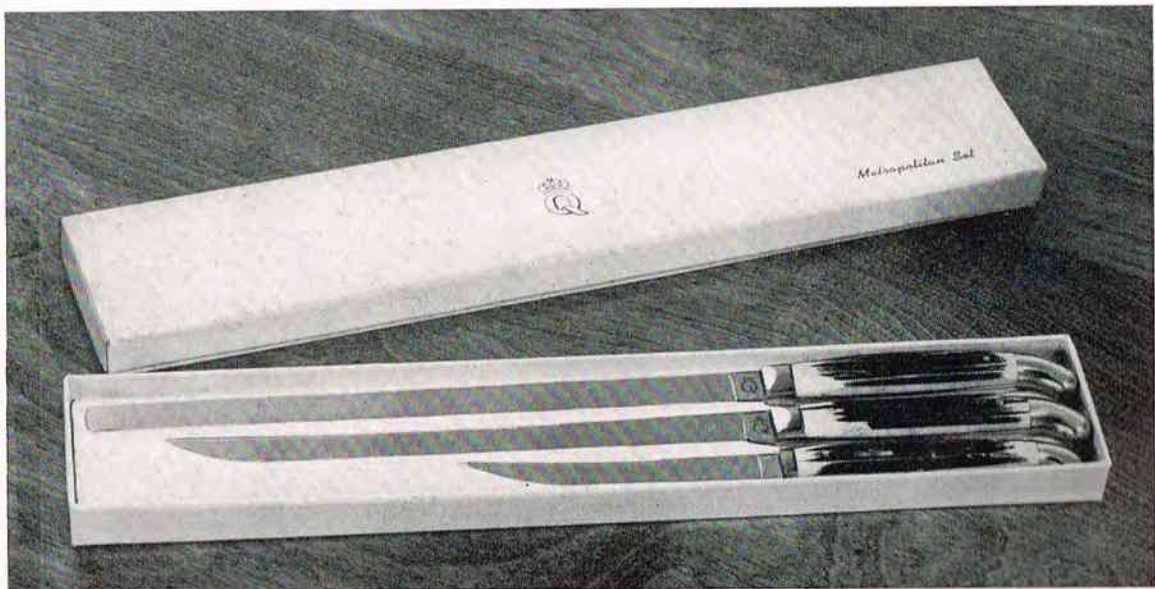
No. SF108 De Luxe Knife and Fork Set — Eight De Luxe Steak Knives and eight matching De Luxe Steak Forks individually set in a beautiful solid walnut case lined with velveteen.



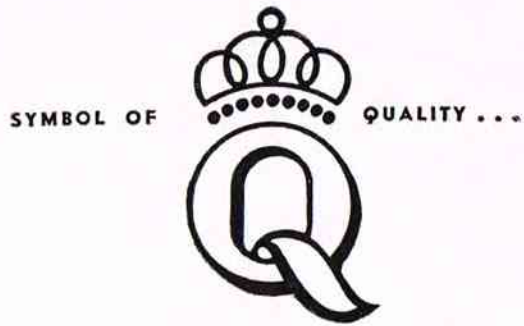
No. SCF118 "Family Steak Set"—Six De Luxe Steak Knives with matching De Luxe Carving Fork and matching De Luxe Handy Knife. Individually set in beautiful solid walnut case lined with velveteen. Created especially for steak lovers.



No. CS502 De Luxe Carver and Slicer Set — 9 inch De Luxe Carver and 10 inch De Luxe Slicer in attractive gift box.



No. CSS503 Metropolitan Set — 9 inch De Luxe Carver, 10 inch De Luxe Slicer and De Luxe Steak Knife in attractive gift box.



No. C702 2 piece De Luxe Carving Set—9 inch Carver and matching De Luxe Carving Fork individually set in beautiful solid walnut case lined with velveteen.

No. C703 3 piece De Luxe Carving Set—9 inch De Luxe Carver, matching De Luxe Carving Fork and matching De Luxe Sharpening Steel individually set in beautiful walnut case lined with velveteen.





No. C703S 3 piece De Luxe Carving Set—9 inch De Luxe Carver, 10 inch De Luxe Slicer and matching De Luxe Carving Fork individually set in beautiful solid walnut case lined with velveteen.

No. C704 4 piece De Luxe Carving Set—9 inch De Luxe Carver, 10 inch De Luxe Slicer, matching De Luxe Carving Fork and matching De Luxe Sharpening Steel individually set in beautiful solid walnut case lined with velveteen.



SYMBOL OF



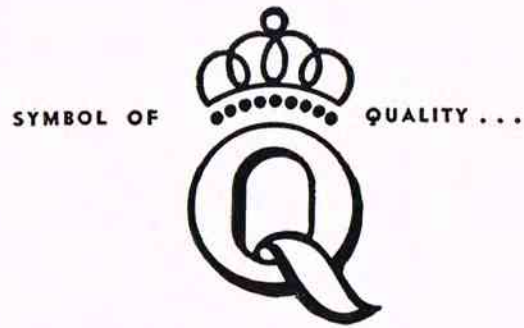
QUALITY . . .



S-702 De Luxe Steak Carving Set—De Luxe Carving Fork and De Luxe Steak Carver individually set in beautiful solid walnut chest lined with velveteen.

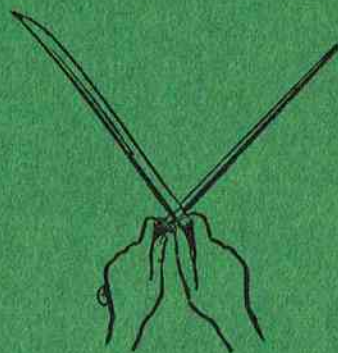
C704S 4 piece De Luxe Carving Set—9 inch De Luxe Carver, 10 inch De Luxe Slicer, 7 inch De Luxe Handy Knife and De Luxe Carving Fork individually set in beautiful solid walnut chest lined with velveteen.





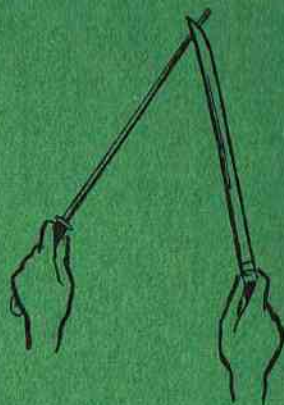
No. HCS117 De Luxe "17" Set—Consists of 6 De Luxe Steak Knives, 6 matching De Luxe Steak Forks, matching De Luxe Carver, matching De Luxe Slicer, matching De Luxe Handy Knife, matching De Luxe Carving Fork, and matching De Luxe Sharpening Steel all individually set in beautiful solid walnut case lined with velveteen. Truly a magnificent creation.

How to Sharpen a Knife



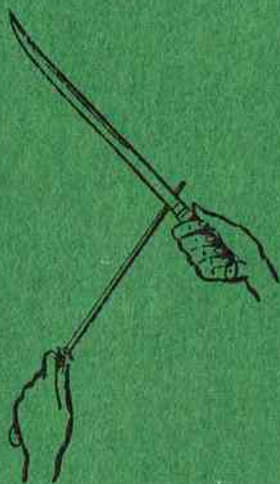
1. Start of First Stroke

Grasp sharpening steel firmly in left hand, knife in right. Hold cutting edge of blade away from body and at about a 20 degree angle to the steel. Place hilt of knife at bottom of steel near guard.



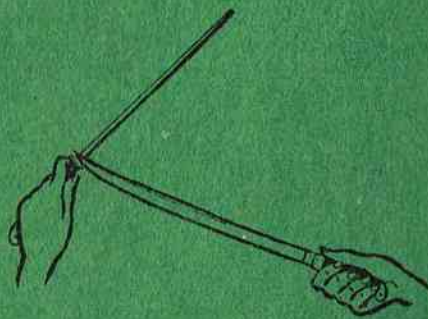
2. End of First Stroke

Now, draw blade up and across top of steel with even pressure so that you run blade of knife up to tip of steel. Both knife tip and steel tip should be together at the completion of this stroke.



3. Start of Return Stroke

Turn knife over so that the cutting edge faces toward the body. Place hilt of blade at tip of sharpening steel. You are now ready for the return stroke.



4. End of Return Stroke

Draw blade across and down the sharpening steel with even pressure. At the end of this stroke knife and sharpening steel should be tip to guard.

A dozen or so even strokes equal in number on both sides of the blade will make even a dull knife razor-sharp. By carefully feeling the cutting edge you will be able to judge just when the knife has been sharpened enough.



10 COMMERCE COURT, NEWARK 2, N. J.

PRICE LIST AND ORDER BLANK

	Price per Doz.
HUNTING & FISHING	
Doz. No. 76	\$15.00
Doz. No. 77	27.50
Doz. No. 80	48.00
Doz. No. 81	48.00
Doz. No. 82	24.00
Doz. No. 83	24.00
Doz. No. 84	24.00
Doz. No. 85	13.20
Doz. No. 86	13.20
Doz. No. 87	24.00
Doz. No. 88	48.00
Doz. No. 89	21.00
Doz. No. 90	21.00
Doz. No. 91	13.20
Doz. No. 92	24.00
Doz. No. 93	24.00
Doz. No. 94	48.00
Doz. No. 95	27.00
Doz. No. 96	18.00
Doz. No. 97	48.00
Doz. No. 98	24.00
Doz. No. 99	13.20
KNIFE, AXE & SHEATHS	
Doz. No. KA 79	\$72.00
Doz. No. SBA78	36.00
Doz. No. DBA79	48.00
POCKET AND PEN	
Doz. No. 1	\$13.20
Doz. No. 2	14.40
Doz. No. 3	14.40
Doz. No. 4	27.00
Doz. No. 5	14.40
Doz. No. 6	21.00
Doz. No. 7	16.50 ^b
Doz. No. 8	24.00 ^b
Doz. No. 9	24.00
Doz. No. 10	14.40
Doz. No. 11	13.20
Doz. No. 12	13.20 ^c
Doz. No. 13	13.20
Doz. No. 14	14.40
Doz. No. 15	14.40
Doz. No. 16	21.00
Doz. No. 17	14.40
Doz. No. 18	14.40
Doz. No. 19	24.00
Doz. No. 20	16.50
Doz. No. 21	14.40
Doz. No. 22	13.20
Doz. No. 23	13.20

	Price per Doz.
Doz. No. 24	18.00
Doz. No. 25	27.00
Doz. No. 26	21.00
Doz. No. 27	13.20
Doz. No. 28	18.00
Doz. No. 29	18.00
Doz. No. 30	18.00
Doz. No. 31	16.50
Doz. No. 32	27.00
Doz. No. 33	24.00
Doz. No. 34	21.00
Doz. No. 35	21.00
Doz. No. 36	21.00 ^d
Doz. No. 37	24.00
Doz. No. 38	27.00
Doz. No. 39	33.00
Doz. No. 40	14.40
Doz. No. 41	13.20
Doz. No. 42	14.40
Doz. No. 43	14.40
HAIR CLIPPERS	
Doz. No. 0007	\$21.00
Doz. No. 0008	30.00
Doz. Electric Clipper	90.00
SCISSORS AND SHEARS	
Doz. No. 219	\$21.00
Doz. No. 220	25.20
Doz. No. 221	22.00
Doz. No. 222	24.00
Doz. No. 223	19.80
Doz. No. 224	22.00
Doz. No. 225	24.00
Doz. No. 226	15.60
Doz. No. 227	15.00
Doz. No. 228	14.40
Doz. No. 229	13.50
Doz. No. 231	21.00
KITCHEN KNIVES	
Doz. No. B-4	7.80
Doz. No. B-6	8.40
Doz. No. B-7	9.60
Doz. No. B-8	10.80
Doz. No. BO-6	8.40
Doz. No. S-8	10.80
Doz. No. P-3	4.80
Doz. No. 200	8.40
Doz. No. 205	4.80
FORMICA LINE	
Doz. No. FC400	\$24.00
Doz. No. S401	18.00
Doz. No. BO404	13.20

	Price per Doz.
Doz. No. B408	18.00
Doz. No. B407	16.50
Doz. No. B406	15.00
Doz. No. P403	9.00
Doz. No. P403sh	9.00
Doz. No. U401	13.20
Doz. No. S410	24.00
Doz. No. CF411	15.00
Doz. No. BK409	19.20

FORMICA SETS

Doz. No. S404	\$ 81.00
Doz. No. S406	120.00
Doz. No. S408	144.00
Doz. No. FKR404	120.00
Doz. No. S502	36.00
Doz. No. F604	57.00
Doz. No. F606	84.00
Doz. No. F608	114.00

DELUXE MATCHED TABLE CUTLERY

Doz. No. U101	\$13.20
Doz. No. SF101	13.20
Doz. No. C300	24.00
Doz. No. S300	24.00
Doz. No. H300	18.00
Doz. No. P300	9.00
Doz. No. P300SH	9.00
Doz. No. CF300	24.00
Doz. No. S5300	24.00

DELUXE MATCHED GIFT SETS

Doz. No. S102	\$28.20
Doz. No. SF103	54.60
Doz. No. S104	81.00
Doz. No. SF104	144.00
Doz. No. S106	120.00
Doz. No. SF106	198.00
Doz. No. S108	144.00
Doz. No. SF108	270.00
Doz. No. SCF118	180.00
Doz. No. CS502	52.00
Doz. No. CS5503	64.00
Doz. No. S602	48.00
Doz. No. C602	54.00
Doz. No. C603	78.00
Doz. No. S604	57.00
Doz. No. S606	84.00
Doz. No. S608	114.00
Doz. No. S702	87.00
Doz. No. C702	96.00
Doz. No. C703	120.00
Doz. No. C703S	120.00
Doz. No. C704	144.00
Doz. No. HCS117	360.00

Purchaser's Signature _____ Date _____

Bill to _____ Ship to _____