

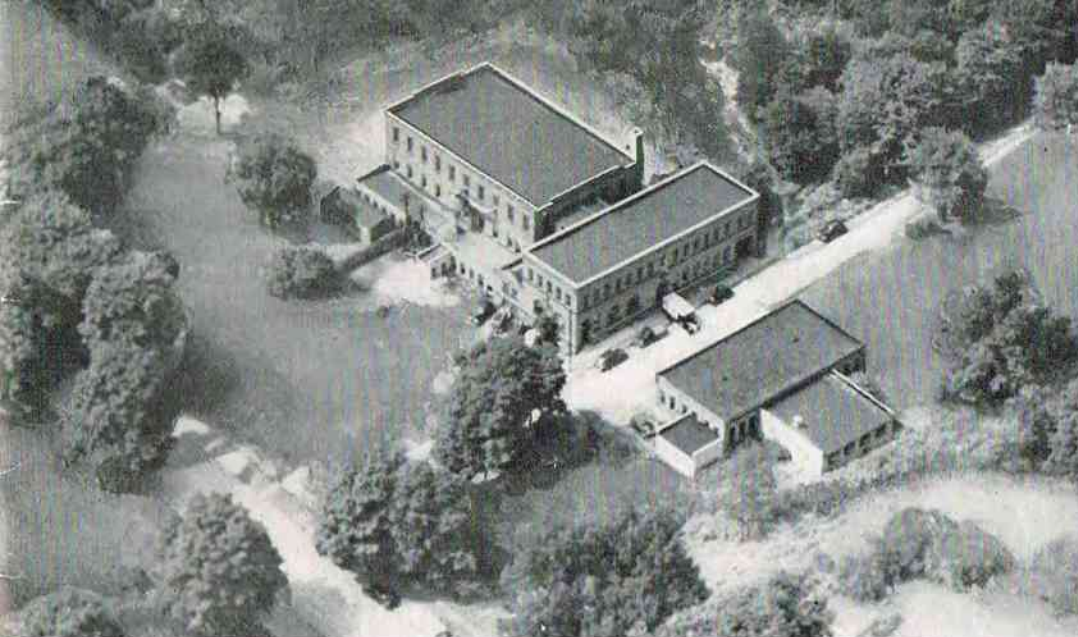


QUEEN

CUTLERY COMPANY

10 COMMERCE COURT, NEWARK 2, N. J.

CATALOG NO. 92 • JANUARY 1956



THE FACTORY
 Aerial photo of the
 Factory buildings at
 Titusville, Penna.

*Q*ueen Steel Knives are of interest to all Store Owners because Queen Steel knives will not rust and will not stain and will stay sharp far longer than other knives. The Store Owner no longer has to worry about his stock of knives remaining in good condition. That's why Queen Cutlery is growing the fastest in popularity in the quality field of knives.

Prompt delivery and courteous efficient service coupled with the very finest quality products at the most reasonable prices make up the balance of the winning combination and tell you why more Store Owners are featuring Queen Cutlery than ever before in the history of our Company.

QUEEN CUTLERY COMPANY

Index

| | Pages |
|----------------------------------|-------|
| Axes | 14 |
| De Luxe Matched Gift Sets | 50-56 |
| De Luxe Line | 48-49 |
| Display Cases | 2-5 |
| Formica Line | 42-43 |
| Formica Gift Sets | 44-47 |
| Hair Clippers | 32 |
| Hand Hammered Kitchen Line | 33-35 |
| Hunting & Fishing Knives | 6-13 |
| Pocket & Pen Knives | 15-31 |
| Scissors & Shears | 36-41 |



These lines sell best through the Open Type Displays illustrated so the prospective customer can handle the merchandise and get the feel of the product.

If you wish these displays, write us or see our salesman on how you may obtain them at no charge.



No. 3 Display Case

Large Counter Display Case, light oak finish. Measures 24 x 24 inches. Storage Space for stock in the rear with lock. We supply this case with display panel fully mounted to our Dealers on orders for ½ dozen of stock on each pattern for 22 or more patterns.

The patterns mounted on the display panel are taken from the stock ordered. If desired we will place a marking button under each pattern identifying the pattern number and showing the Dealer's retail resale price.

This case should be mounted with all the patterns you carry in stock. If you desire one, write us or ask our salesman.

Display Cases Double Your Sales



No. 4-A Display Case

Large Floor Display Case, light oak finish. 45½ inches high with display panel measuring 28 x 38 inches. Storage space in rear with lock. We supply this case with display panel fully mounted to our Dealers on orders for ½ dozen of stock on each pattern for 40 or more patterns.

The patterns mounted on the display panel are taken from the stock ordered. If desired we will place a marking button under each pattern identifying the pattern number and showing the Dealer's retail resale price.

This case should be mounted with all the patterns you carry in stock. If you desire one, write us or ask our salesman.

An outstanding fixture for the progressive dealer.

Display Cases Save Half Of Your Salesman's Time



No. 5-A Display Case

Our largest Floor Display Case — Light Oak Finish. Stands 45½ inches high and contains two display panels each measuring 28 x 38 inches. Storage space in rear with lock. We supply this case with display panel fully mounted to our Dealers on orders for ½ dozen of stock on each pattern for 80 or more patterns.

The patterns mounted on the display panel are taken from the stock ordered.

If desired we will place a marking button under each pattern identifying the pattern number and showing the Dealer's retail resale price.

This case should be mounted with all the patterns you carry in stock. If you desire one, write us or ask our salesman.

An outstanding fixture for the progressive dealer.

Display Cases Double Your Sales

Queen Steel

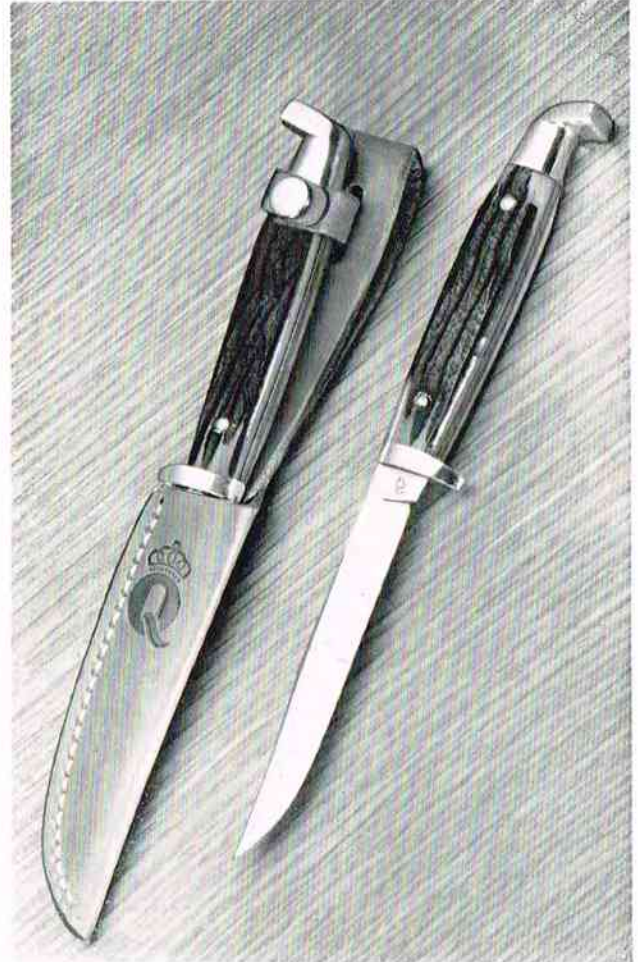


No. 78 Hunting & Combat Knife — This is the finest big game hunting knife in the world. Made of Queen Steel. Will not rust or stain and because of our secret tempering process, it will stay sharp far longer than other knives. Solid one-piece construction so that the handle won't disengage from the knife. Solid brass guard and the handle is made from the finest imported India Stag. Made in perfect proportion which insures perfect balance. Double sabre grind and note that both sides of the blade has sharp cutting edges which is important when skinning large game. Patterned after the original Bowie knife. Made of the very finest materials and with the most expert labor of our skilled master cutlerers. The sheath is made of the finest top grain cowhide embossed with hand white lacing and a protective filler so the blade won't cut the lacing. Individually boxed.

Queen Steel



No. 73 Hunting Knife — Genuine Frontier Bone stag barehead handle with 4-inch flat ground blade. Made of Queen Steel. Will not rust or stain and because of our secret tempering process, it will stay sharp far longer than other knives. Complete with leather sheath made of top grain cowhide, saddle stitched with handsomely embossed design. Tremendous value.



No. 74 Hunting Knife — Genuine Frontier Bone stag handle with 3 7/8-inch flat ground blade. Made of Queen Steel. Will not rust or stain and because of our secret tempering process, it will stay sharp far longer than other knives. Complete with leather sheath made of top grain cowhide, saddle stitched with handsomely embossed design.

Queen Steel



No. 76 Fishing Knife — Genuine Formica Handle with 4 inch blade. Scaler on back of blade. Made of Queen Steel. Will not rust or stain and because of our secret tempering process will stay sharp far longer than other knives. Complete with leather sheath made of top grain cowhide, saddle stitched with handsomely embossed design.



No. 77 Hunting Knife — Genuine Frontier Bone stag handle. 5 inch large wide scimitar blade, 9 1/2 inches overall. Made of Queen Steel. Will not rust or stain and because of our secret tempering process, will stay sharp far longer than other knives. Complete in leather sheath made of top grain cowhide, saddle stitched with handsomely embossed design. The hunting knife for big game.

Queen Steel



No. 79 Hunting Knife — Genuine Frontier Bone Stag handle. 3½-inch flat ground blade. Made of Queen Steel. Will not rust or stain and because of our secret tempering process, it will stay sharp far longer than other knives. Most popular knife for sticking and bleeding game. Complete with leather sheath made of top grain cowhide, saddle stitched with handsomely embossed design.



No. 80 Combination Hunting Set — Genuine Frontier bone stag handles. One hunting knife with 4 inch saber ground blade with blood groove and one Rabbit knife with 3 inch flat ground blade. Made of Queen Steel. Will not rust or stain and because of our secret tempering process, will stay sharp far longer than any other knives. Complete in one handsome double leather sheath made of top grain cowhide, saddle stitched with handtooled floral design. Individually boxed.

No. 81 Combination Hunting Set — Same as above, except simulated pearl handles.

No. 94 — Same as above, except with amber handles

Queen Steel



No. 82 Hunting Knife — Genuine *Frontier* bone stag handle with 4 inch saber ground blade with blood groove. Made of Queen Steel. Will not rust or stain and because of our secret tempering process, will stay sharp far longer than other knives. Complete in leather sheath made of top grain cowhide, saddle stitched with handsomely embossed design. Best selling large hunting knife.

No. 83 Hunting Knife — Same as above, except simulated pearl handle.

No. 92 — Same as above, except with amber handle.

No. 93 — Same as above, except with brilliant red handle for hunter's safety.



No. 84 Hunting Knife — 4 inch Saber ground blade with blood groove. Made of Queen Steel. Will not rust or stain and because of our secret tempering process, will stay sharp far longer than other knives. Colorfully decorated leather handle with perma-gloss finish. Complete in leather sheath made of top grain cowhide, saddle stitched with handsomely embossed design.

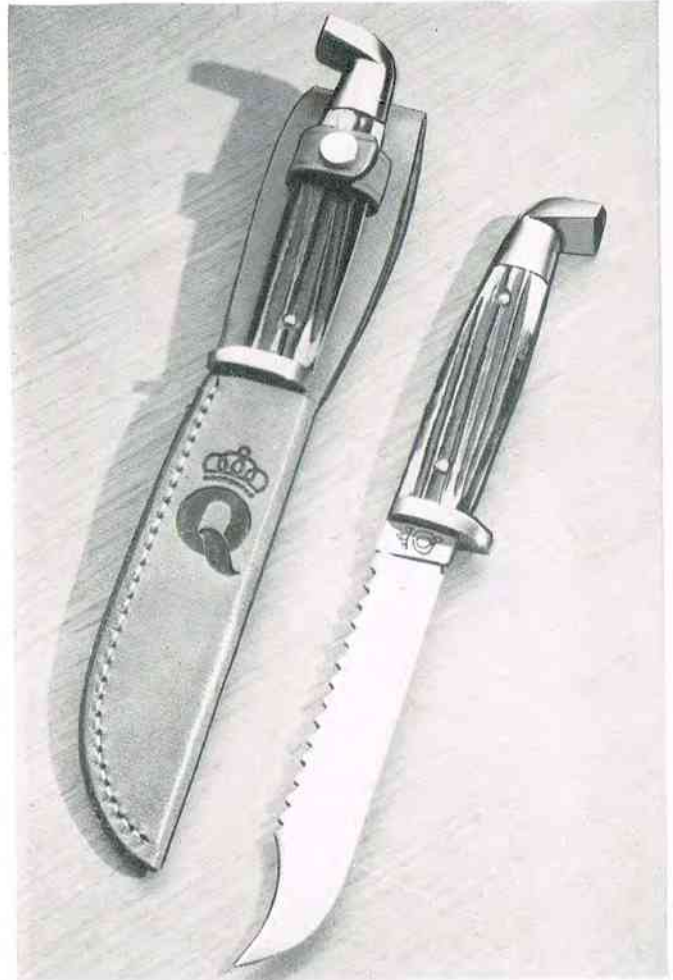
Queen Steel



No. 85 Finn or Trout Knife — Genuine *Frontier* bone stag handle with 3 inch flat ground blade. Made of Queen Steel. Will not rust or stain and because of our secret tempering process, will stay sharp far longer than any other knives. Most popular knife for fishing, hunting and all-purpose utility. Complete with leather sheath made of top grain cowhide, saddle stitched with handsomely embossed design. Best selling hunting knife in our line.

No. 86 Finn or Trout Knife — Same as above, except simulated pearl handle.

No. 91 — Same as above, except with amber handle.



No. 87 Expert Fishing Knife — Genuine *Frontier* bone stag handle with 4 1/4 inch blade. Scaler on back and scimitar for splitting. Made of Queen Steel. Will not rust or stain and because of our secret tempering process, will stay sharp far longer than other knives. Complete with leather sheath made of top grain cowhide, saddle stitched with handsomely embossed design.

No. 88 Combination Set of Fishing Knives — One No. 87 and one No. 85 knife in one handsome double sheath, saddle stitched, hand tooled with floral design. Individually boxed.

Queen Steel



No. 89 Hunting Knife — Genuine *Frontier* bone stag handle with $3\frac{3}{8}$ inch flat ground blade. Made of Queen Steel. Will not rust or stain and because of our secret tempering process, will stay sharp far longer than other knives. Complete in leather sheath made of top grain cowhide, saddle stitched with handsomely embossed design. A favorite knife for hunting and skinning wild game.



No. 90 Hunting Knife — Attractive multicolored handle. 4 inch blade. $7\frac{3}{4}$ inches overall. Made of Queen Steel. Will not rust or stain and because of our secret tempering process, will stay sharp far longer than other knives. Complete in leather sheath made of top grain cowhide, saddle stitched with handsomely embossed design.

Queen Steel



No. 95 Hunting Knife — Genuine *Frontier* bone stag handle with 5 inch saber ground blade with blood groove, 9 ½ inches overall. Made of Queen Steel. Will not rust or stain and because of our secret tempering process, will stay sharp far longer than other knives. Complete in leather sheath made of top grain cowhide, saddle stitched with handsomely embossed design. The hunting knife for big game.



No. 98 Skinning Knife — Genuine *Frontier* bone stag handle with 4 inch scimitar shaped flat blade. Made of Queen Steel. Will not rust or stain and because of our secret tempering process, will stay sharp far longer than other knives. Complete in leather sheath made of top grain cowhide, saddle stitched with handsomely embossed design. Sportsman's favorite.



KA80 — Knife & Axe Combination — 11 1/2 ounce Hunting Axe. Finest quality steel. Chromium plated. Solid one-piece construction — 8-inch handle. 4-inch sabre ground hunting knife. Complete with leather sheath attached to Axe.



No. SBA78 — Single bit 1 3/4 pound Camp Axe. 16 inch hickory handle. Finest quality steel. Complete with leather sheath, saddle stitched and riveted. Slot in sheath for carrying on the belt.

No. DBA 79 — Double bit one pound Utility Axe. 15 inch hickory handle. Finest quality steel. Complete with fine leather sheath made of top grain cowhide, saddle stitched with handsomely embossed design. Slot in sheath for carrying on the belt.



SBA80 — Single bit 11 1/2 ounce Archer's Axe. Finest quality steel. Chromium plated. Solid one-piece construction — 8-inch handle. Complete with leather sheath, saddle stitched. Slot in sheath for carrying on the belt.



No. KA79 Knife and Axe Combination — One pound double bit Utility Axe. 15 inch hickory handle. Finest quality steel. Handsome leather Axe sheath made of top grain cowhide, saddle stitched with embossed design. Sheath slotted for carrying on the belt. 4 inch saber ground blade Hunting Knife with genuine *Frontier* bone stag handle in leather sheath made of top grain cowhide, saddle stitched with handsomely embossed design. Hunting knife and sheath attach to axe sheath and axe handle which makes a fine Knife and Axe combination.

Queen Steel



No. 1 Pruning or Hawkbill Pocket Knife — Rosewood handle. Made of Queen Steel. Will not rust or stain and because of our secret tempering process, it will stay sharp far longer than other knives. Nickel Silver Bolster, brass linings. Complete with opening for leather thong. 3-inch blade with $2\frac{3}{4}$ -inch cutting edge. $4\frac{1}{8}$ inches long when closed. Sturdy, heavy duty pocket knife used by farmers, carpenters, electricians, etc.



No. 2 Serpentine Pattern — Two blade pocket knife. Genuine Frontier bone stag handle. Made of Queen Steel. Will not rust or stain and because of our secret tempering process, it will stay sharp far longer than other knives. Nickel Silver bolsters, brass linings. $2\frac{5}{8}$ -inch clip blade with $2\frac{1}{4}$ -inch cutting edge and $1\frac{3}{4}$ -inch pen blade with $1\frac{1}{2}$ -inch cutting edge. $3\frac{1}{4}$ inches long when closed.

No. 2-A — Same as above except with Amber handle.

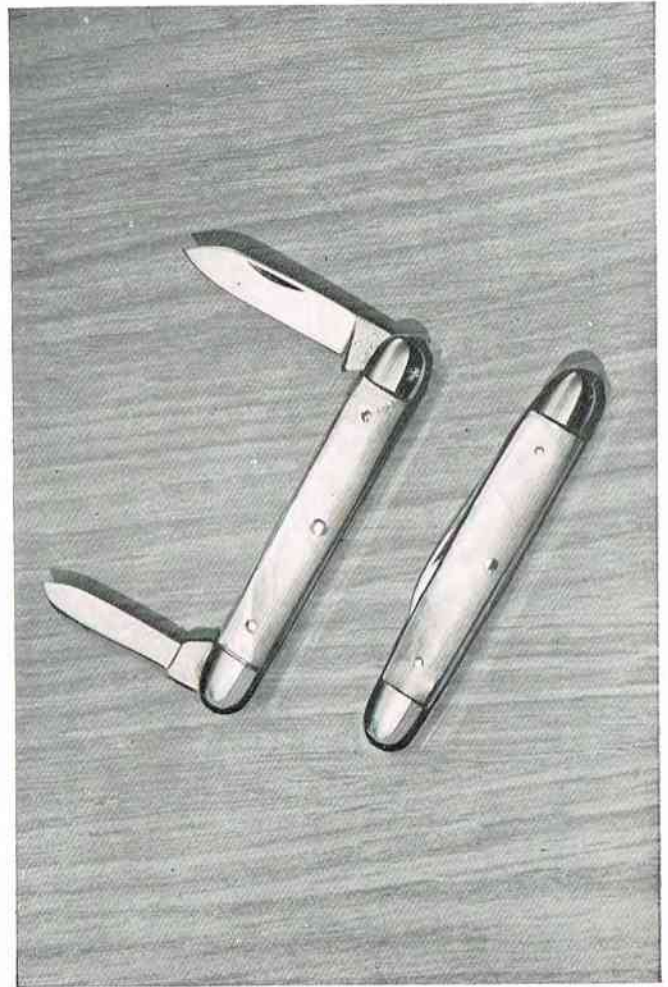
Queen Steel



No. 3 Sleeveboard Pattern — Two blade pen knife. Genuine Frontier bone stag handle. Made of Queen Steel. Will not rust or stain and because of our secret tempering process will stay sharp far longer than other knives. Nickel Silver Double bolsters, brass linings. 2-inch clip blade with $1\frac{3}{4}$ -inch cutting edge and $1\frac{1}{2}$ -inch pen blade with $1\frac{1}{4}$ -inch cutting edge. $3\frac{3}{8}$ inches long when closed.

No. 4 — Same as No. 3 except with Genuine Mother of Pearl Handle.

No. 21 — Same as No. 3 except with 2 inch Spear Point blade instead of Clip blade.



No. 6 Senator Pattern — Two-blade pen knife. Genuine Mother of Pearl Handle. Made of Queen Steel. Will not rust or stain and because of our secret tempering process will stay sharp far longer than other knives. Nickel Silver double bolsters, brass linings. $1\frac{7}{8}$ -inch spear blade with $1\frac{1}{4}$ -inch cutting edge and $1\frac{3}{8}$ inch pen blade with 1-inch cutting edge. $2\frac{1}{2}$ inches long when closed.

No. 8 — Same as above except with Bale Ring.

No. 5 — Same as No. 6 except with genuine Frontier bone stag handle and chrome vanadium steel.

No. 7 — Same as No. 5 except with Bale Ring.

Queen Steel



No. 9 Stockmen's Pattern — Three blade pocket knife. Genuine *Frontier* bone stag handle. Made of Queen Steel. Will not rust or stain and because of our secret tempering process will stay sharp far longer than other knives. Nickel Silver double bolsters, brass linings. 3-inch clip blade with $2\frac{5}{8}$ -inch cutting edge, 2-inch spey blade with $1\frac{3}{4}$ -inch cutting edge and $2\frac{1}{8}$ -inch sheepsfoot blade with $1\frac{7}{8}$ -inch cutting edge. 4 inches long when closed.

No. 9-A — Same as above except with Amber handle.



No. 10 Heavy Duty Pattern — Two blade jack knife. Genuine *Frontier* bone stag handle. Made of Queen Steel. Will not rust or stain and because of our secret tempering process, it will stay sharp far longer than other knives. Nickel Silver double bolsters, brass linings. Clip blade $2\frac{11}{16}$ -inches long with $2\frac{3}{8}$ -inch cutting edge and pen blade $2\frac{1}{8}$ inches long with $1\frac{7}{8}$ -inch cutting edge. $3\frac{11}{16}$ inches long when closed. The farmer's favorite.

No. 18 — Same as above except with $2\frac{5}{8}$ -inch Spear point blade instead of Clip blade.

Queen Steel



No. 11 Switch Pattern — Single blade heavy duty pocket knife. Genuine Frontier bone stag handle. Made of Queen Steel. Will not rust or stain and because of our secret tempering process, it will stay sharp far longer than other knives. Nickel Silver double bolsters, brass linings. $3\frac{5}{8}$ -inch clip blade with 3-inch cutting edge. $4\frac{1}{8}$ inches long when closed. A favorite of sportsmen and fishermen as well as for general use.

No. 12 — Same as above except with simulated Pearl handle.

No. 13 — Same as above except with Amber handle.

No. 41 — Same as above except with brilliant red handle.



No. 14 Dogleg Pattern — Two blade small jack knife. Genuine Frontier bone stag handle. Made of Queen Steel. Will not rust or stain and because of our secret tempering process, it will stay sharp far longer than other knives. Nickel Silver Double bolsters, brass linings. $2\frac{1}{8}$ -inch clip blade with $1\frac{7}{8}$ -inch cutting edge and $1\frac{1}{16}$ -inch pen blade with $1\frac{1}{8}$ -inch cutting edge. $2\frac{3}{4}$ inches long when closed. One of our most favored patterns.

No. 17 — Same as above except with Amber handle.

Queen Steel



No. 15 Congress Pattern — Two blade pocket knife. Genuine bone stag handle. Made of Queen Steel. Will not rust or stain and because of our secret tempering process will stay sharp far longer than other knives. Nickel Silver double bolsters, brass linings. 2-inch sheepfoot blade with $1\frac{3}{4}$ -inch cutting edge and $1\frac{1}{8}$ -inch pen blade with $1\frac{3}{8}$ -inch cutting edge. $3\frac{1}{2}$ inches long when closed. Always a leading number.

No. 33 Small Four Blade Congress Pattern — Same as above except with a 2 inch sheepfoot blade at each end and a $1\frac{3}{4}$ inch pen blade at each end. $3\frac{1}{2}$ inches overall when closed.



No. 16 Serpentine Pattern — Three blade pocket knife. Genuine *Frontier* bone stag handle. Made of Queen Steel. Will not rust or stain and because of our secret tempering process will stay sharp far longer than other knives. Nickel Silver double bolsters, brass linings. $2\frac{3}{8}$ -inch clip blade with $2\frac{1}{4}$ -inch cutting edge, $1\frac{7}{8}$ -inch sheepfoot blade with $1\frac{1}{2}$ -inch cutting edge and $1\frac{1}{8}$ -inch pen blade with $1\frac{3}{8}$ -inch cutting edge. $3\frac{1}{4}$ inches long when closed. A stable number.

No. 16-A — Same as above except with Amber handle.

Queen Steel



No. 20 Folding Outdoors Knife — Very sturdy construction. Genuine bone stag handle. Made of Queen Steel. Will not rust or stain and because of our secret tempering process, it will stay sharp far longer than other knives. Nickel Silver double bolsters, brass linings. Large clip blade $3\frac{7}{8}$ inches long with $3\frac{1}{2}$ -inch cutting edge. Knife when closed 5 inches overall. A popular number.



No. 22 Barlow Knife, Clip Pattern — Our Barlow Knife has always enjoyed top popularity. Genuine bone stag handle. Heavy duty bolster. Brass Linings. Large clip blade $2\frac{1}{2}$ inches long with $2\frac{1}{4}$ -inch cutting edge and pen blade 2 inches long with $1\frac{7}{8}$ -inch cutting edge. $3\frac{1}{2}$ inches overall when closed.

No. 23 — Same as above except with $2\frac{1}{2}$ -inch spear point blade instead of clip blade.

No. 25 — Same as above, except with easy opening $2\frac{1}{2}$ -inch razor blade instead of clip blade.

No. 27 — Same as above except with $2\frac{1}{2}$ -inch Sheepsfoot blade instead of clip blade.

Queen Steel



No. 24 Trapper's Pattern — Genuine Frontier Bone stag handle. Sturdily constructed. Made of Queen Steel. Will not rust or stain and because of our secret tempering process, it will stay sharp far longer than other knives. Nickel Silver double bolsters, brass linings. $3\frac{3}{8}$ -inch clip blade with 3-inch cutting edge; spey blade $3\frac{5}{8}$ inches long with 3-inch cutting edge. 4 inches long when closed. Standard pattern.

No. 30 — Same as above, except with amber handle.



No. 26 Serpentine Pattern — Three blade pocket knife. Genuine Frontier bone stag handle. Made of Queen Steel. Will not rust or stain and because of our secret tempering process, it will stay sharp far longer than other knives. Nickel Silver double bolsters, brass linings. $2\frac{1}{2}$ -inch clip blade with $2\frac{1}{4}$ -inch cutting edge. $1\frac{3}{4}$ -inch spey blade with $1\frac{1}{2}$ -inch cutting edge and $1\frac{7}{8}$ -inch sheepfoot blade with $1\frac{5}{8}$ -inch cutting edge. $3\frac{1}{4}$ inches long when closed.

No. 26-A — Same as above except with Amber handle.

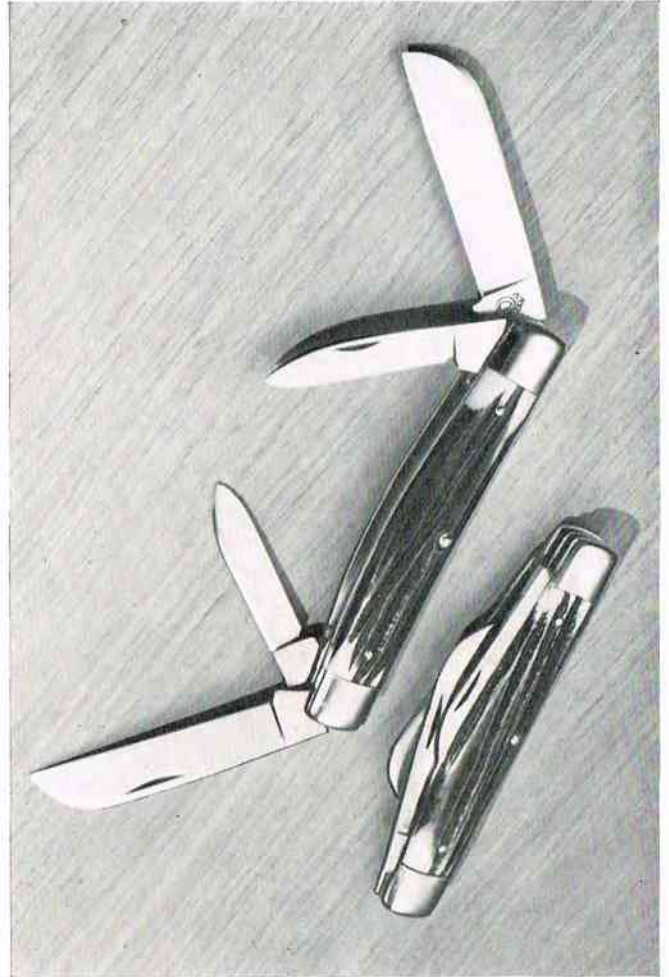
No. 57 — Same as above except with genuine Mother of Pearl handle.

Queen Steel



No. 28 Large Farmer's Knife, Clip Pattern — Large 2 Blade jack knife. Genuine Frontier bone stag handle. Made of Queen Steel. Will not rust or stain and because of our secret tempering process will stay sharp far longer than other knives. Nickel Silver double bolsters, brass linings. Large clip blade is 3 1/2 inches long with 3 1/8 inch cutting edge and pen blade 2 3/8 inches long with 2 1/8-inch cutting edge. 4 1/2 inches overall when closed.

No. 29 — Same as above except with 3 1/2-inch spear point blade instead of clip blade.



No. 32 Large four blade Congress Pattern — Genuine Frontier bone stag handle. Made of Queen Steel. Will not rust or stain and because of our secret tempering process, it will stay sharp far longer than other knives. Nickel Silver double bolsters, brass linings. 2 1/2-inch Sheepsfoot blade on each end with 2 1/4-inch cutting edge and also a 2-inch pen blade at each end with 1 5/8-inch cutting edge. 4 inches overall when closed. A favorite knife of carpenters and skilled workmen.

No. 31 — Large two blade Congress pattern. Same as above except with one Sheepsfoot blade at one end and one 2-inch pen blade at the other end.

Queen Steel



No. 35 Small Three Blade Serpentine Pattern

— Genuine Frontier bone stag handle. Made of Queen Steel. Will not rust or stain and because of our secret tempering process will stay sharp far longer than other knives. Nickel Silver double bolsters, brass linings. 2-inch clip blade with $1\frac{7}{8}$ -inch cutting edge, $1\frac{3}{8}$ -inch sheepsfoot blade with 1-inch cutting edge and $1\frac{1}{4}$ -inch pen blade with 1-inch cutting edge. $2\frac{5}{8}$ inches long when closed.

No. 34 — Same as above except with Amber handle.

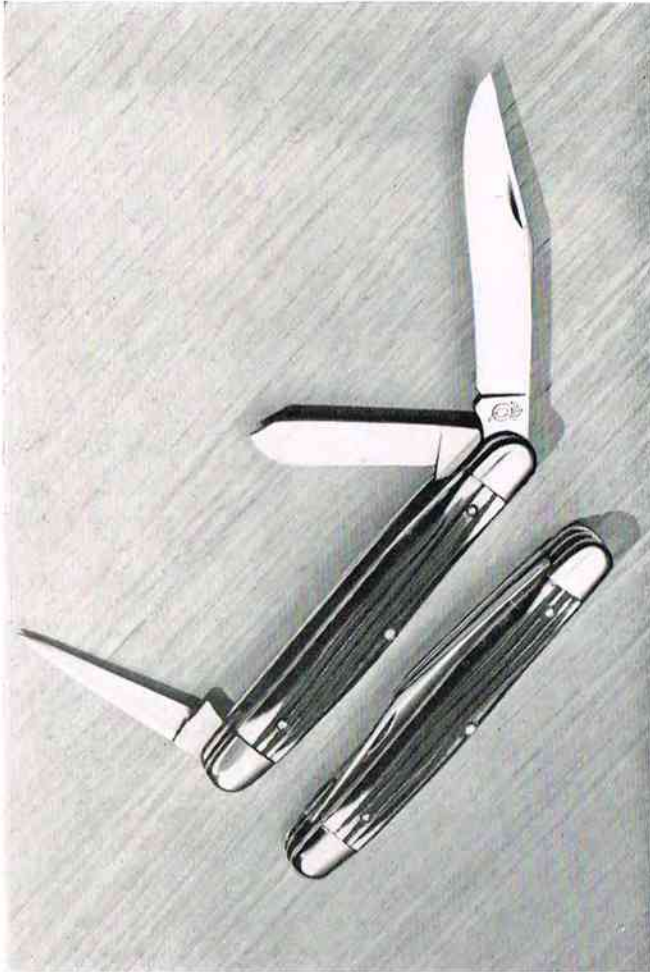
No. 54 — Same as above except with genuine Mother of Pearl handles.



No. 36 One Blade Lock Pattern

— Genuine Frontier bone stag handle. Made of high carbon finest selected tool steel. Nickel Silver bolsters, brass linings. Large clip blade $3\frac{3}{8}$ inches long with $3\frac{1}{8}$ -inch cutting edge. $4\frac{1}{2}$ inches long overall when closed. Blade of knife locks rigidly when opened.

Queen Steel



No. 37 Stockmen's Belt Punch Pattern — Large three blade knife. Genuine Frontier bone stag handle. Made of Queen Steel. Will not rust or stain and because of our secret tempering process will stay sharp far longer than other knives. Nickel Silver double bolsters, brass linings. $2\frac{7}{8}$ -inch clip blade with $2\frac{5}{8}$ -inch cutting edge, $1\frac{7}{8}$ -inch spey blade with $1\frac{5}{8}$ -inch cutting edge and $1\frac{7}{8}$ -inch leather belt punch blade with $1\frac{1}{4}$ -inch cutting edge. 4 inches long when closed.



No. 39 Heavy Duty Big Pocket Knife — Genuine Frontier bone stag handle. Made of Queen Steel. Will not rust or stain and because of our secret tempering process, it will stay sharp far longer than other knives. Nickel Silver double bolsters, brass linings. Pocket blade 4 inches in length, saber ground, with $3\frac{3}{4}$ -inch cutting edge. Skinning blade 4 inches in length, flat ground with $3\frac{3}{4}$ -inch cutting edge. $5\frac{1}{4}$ inches overall when closed.

Queen Steel



No. 40 Heavy Duty Screwdriver Knife. — Genuine Frontier bone stag handle. Nickel Silver double bolsters, brass linings. Clip blade $2\frac{1}{8}$ inches long with $\frac{2}{8}$ -inch cutting edge and screw driver bottle opener blade $2\frac{3}{4}$ inches long. $3\frac{1}{8}$ inches overall when closed.

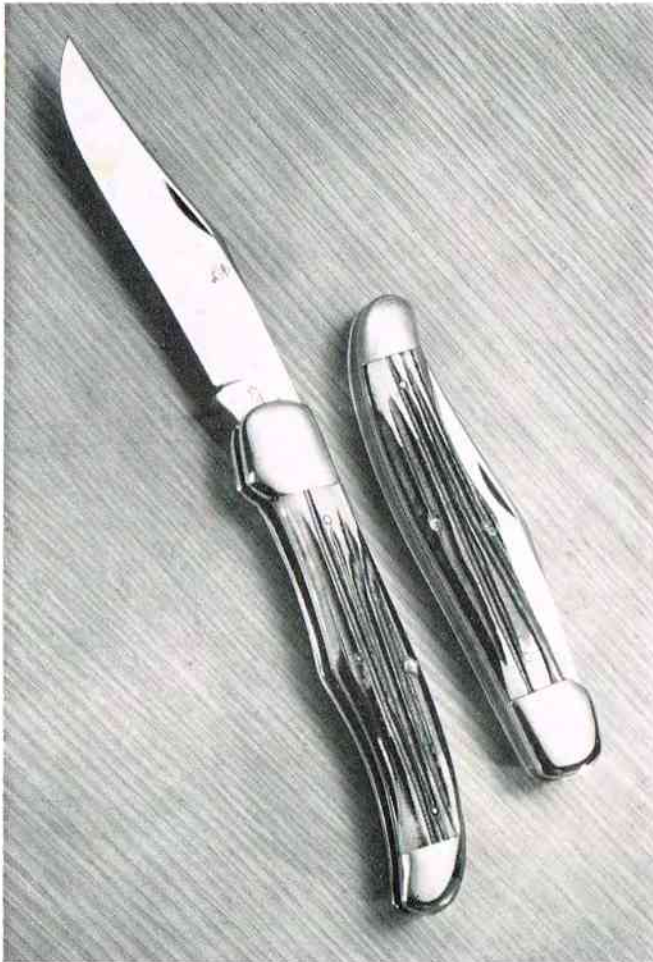


No. 42 Small Two Blade Serpentine Pattern — Amber handle. Made of Queen Steel. Will not rust or stain and because of our secret tempering process, it will stay sharp far longer than other knives. Nickel Silver double bolsters, brass linings. 2-inch clip blade with $1\frac{7}{8}$ -inch cutting edge and $1\frac{1}{4}$ -inch pen blade with $1\frac{1}{8}$ -inch cutting edge. $2\frac{5}{8}$ inches long when closed. An outstanding number.

No. 43 — Same as above except with Genuine Frontier bone stag handle.

No. 59 — Same as above except with Genuine Mother of Pearl handle.

Queen Steel



No. 44 Heavy Duty Big Pocket Knife — Genuine Frontier bone stag handle. Made of Queen Steel. Will not rust or stain and because of our secret tempering process, it will stay sharp far longer than other knives. Nickel Silver double bolsters, brass linings. Large clip blade 4 inches long, saber ground with $3\frac{3}{4}$ -inch cutting edge. $5\frac{1}{4}$ inches overall when closed.

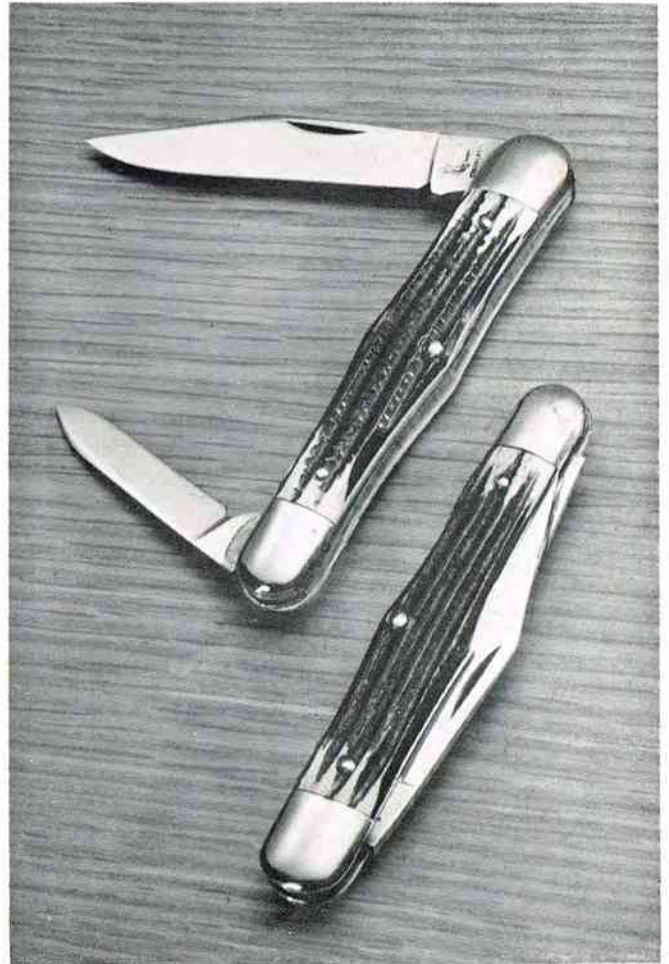


No. 45 Big Chief Pocket Knife — Aluminum handle. Made of Queen Steel. Will not rust or stain and because of our secret tempering process, it will stay sharp far longer than other knives. Single blade $3\frac{3}{4}$ inches long with $3\frac{1}{2}$ -inch cutting edge. Overall size 5 inches long.

Queen Steel

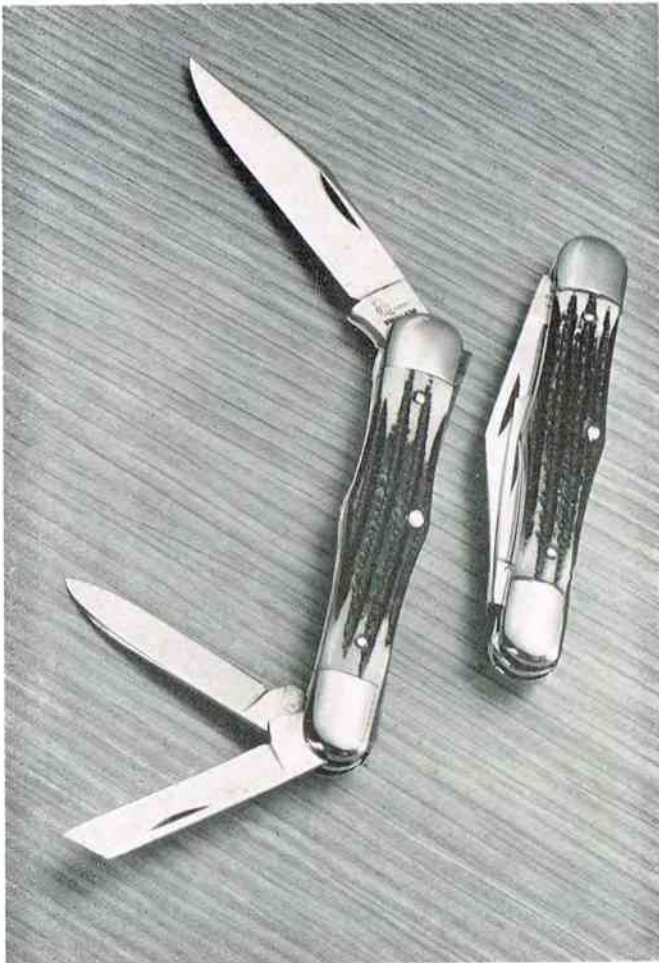


No. 46 Folding Fishing Knife — complete with disgorging and scaler. The disgorging is magnetized so you can pick up hooks with it and it has a sharpening stone on the side of the handle for sharpening hooks and for straightening hooks there is a hole in the bolster. Genuine Frontier bone stag handle. Made of Queen Steel. Will not rust or stain and because of our secret tempering process, it will stay sharp far longer than other knives. Nickel Silver double bolsters, brass linings. Clip blade $3\frac{3}{4}$ inches long with $\frac{3}{16}$ -inch cutting edge. Disgorging, scaler and bottle opener blade $3\frac{1}{16}$ inches long. Overall size 5 inches long.

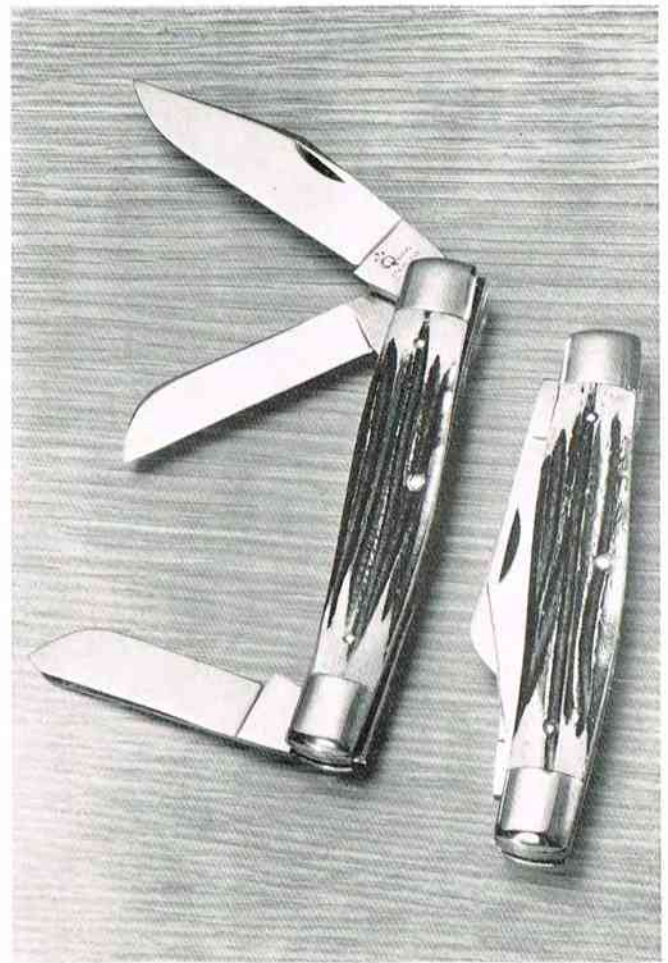


No. 47 Balloon Pattern — Two Blade Pen Knife. Genuine Frontier Bone stag handle. Made of Queen Steel. Will not rust or stain and because of our secret tempering process, it will stay sharp far longer than other knives. Nickel Silver double bolsters, brass linings. Clip blade $2\frac{1}{16}$ inches long with $\frac{1}{8}$ -inch cutting edge and pen blade $2\frac{5}{8}$ inches long with $\frac{1}{8}$ -inch cutting edge. $3\frac{1}{2}$ inches overall.

Queen Steel



No. 48 Balloon Pattern — Carpenters Knife, three blade. Genuine Frontier bone stag handle. Made of Queen Steel. Will not rust or stain and because of our secret tempering process, it will stay sharp far longer than other knives. Nickel Silver double bolsters, brass linings. Clip blade $2\frac{3}{8}$ inches long with $2\frac{1}{8}$ -inch cutting edge, pen blade $2\frac{5}{8}$ inches long with $1\frac{3}{8}$ -inch cutting edge and carving blade $1\frac{5}{8}$ inches long with $1\frac{1}{16}$ -inch cutting edge. $3\frac{1}{2}$ inches overall.



No. 49 Three Blade Texas Cattle Knife — Genuine bone stag handle. Made of Queen Steel. Will not rust or stain and because of our secret tempering process it will stay sharp far longer than other knives. Nickel Silver double bolsters, brass linings. Large clip blade size $3\frac{1}{4}$ -inch with $2\frac{7}{8}$ -inch cutting edge; spey blade $2\frac{1}{4}$ -inch with $1\frac{7}{8}$ -inch cutting edge and sheepsfoot blade $2\frac{1}{16}$ -inch with $2\frac{1}{8}$ -inch cutting edge. $4\frac{1}{4}$ inches overall.

Queen Steel



No. 51 Dogleg Pattern — Medium size two blade Jack Knife. Genuine Frontier bone stag handle. Made of Queen Steel. Will not rust or stain and because of our secret tempering process, it will stay sharp far longer than other knives. Nickel Silver double bolsters, brass linings. $2\frac{3}{4}$ inch clip blade with $2\frac{1}{2}$ inch cutting edge and $1\frac{7}{8}$ inch pen blade with $1\frac{5}{8}$ inch cutting edge. $3\frac{1}{2}$ inches long when closed.



No. 52 Serpentine Pattern — Heavy duty two blade Trappers Knife. One blade at each end. Genuine Frontier bone stag handle. Made of Queen Steel. Will not rust or stain and because of our secret tempering process, it will stay sharp far longer than other knives. Nickel Silver Double Bolster Brass Linings. Large clip blade $3\frac{3}{4}$ inches long with 3 inch cutting edge and large spey blade $3\frac{1}{4}$ inches long with 3 inch cutting edge. $4\frac{1}{4}$ inches long when closed.

Queen Steel



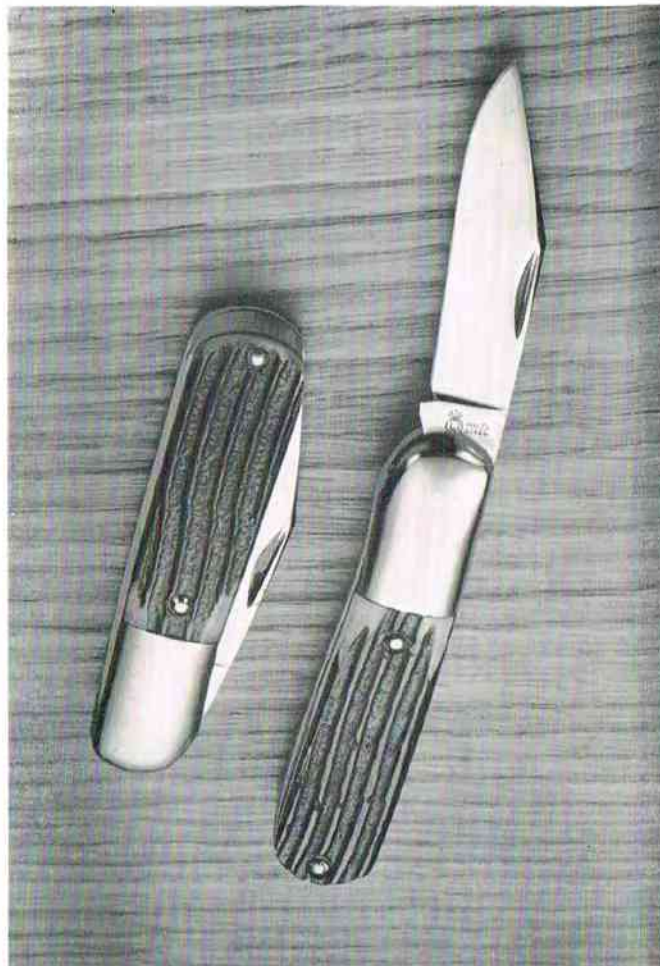
No. 53 Citrus Fruit Knife — Simulated Pearl Handle. Made of Queen Steel. Will not rust or stain and because of our secret tempering process, it will stay sharp far longer than other knives. Nickel silver double bolsters, brass linings. One slim spear point blade 3 $\frac{3}{4}$ inches long with 3 $\frac{3}{8}$ inch cutting edge. 4 $\frac{5}{8}$ inches long when closed. Handle can be imprinted with message at extra cost if desired.



No. 55 Advertising Knife — Sleeveboard Pattern. Two blade pen knife. Simulated Pearl handle. Made of Queen Steel. Will not rust or stain and because of our secret tempering process, it will stay sharp far longer than other knives. Nickel Silver Double bolsters, brass linings. One 2-inch Spear Point blade with 1 $\frac{3}{4}$ inch cutting edge and one 1 $\frac{1}{2}$ inch pen blade with 1 $\frac{1}{4}$ inch cutting edge. 3 $\frac{3}{8}$ inches long when closed. Message can be imprinted on both handles. Individually boxed. Ideal Gift and Advertising item.

No. 55 Special — Same as above except with no imprinting on knives and not individually boxed.

Queen Steel



No. 56 Balloon Pattern — Two blade Jack Knife. Genuine Frontier bone stag handle. Made of Queen Steel. Will not rust or stain and because of our secret tempering process, it will stay sharp far longer than other knives. Nickel Silver double bolsters, brass linings. One large clip blade 2 $\frac{3}{4}$ -inches long with 2 $\frac{1}{2}$ -inch cutting edge. One pen blade 1 $\frac{3}{4}$ -inches long with 1 $\frac{1}{2}$ -inch cutting edge. The knife is 3 $\frac{1}{2}$ inches overall when closed.

No. 58 — Same as above except with Spear point blade instead of Clip blade.

No. 60 One Blade Barlow Knife — Genuine Frontier Bone stag handle. Made of Queen Steel. Will not rust or stain and because of our secret tempering process, it will stay sharp far longer than other knives. One large clip blade 2 $\frac{1}{2}$ -inches long with 2 $\frac{1}{4}$ -inch cutting edge.

No. 60-S — Same as above except with Spearpoint blade instead of Clip blade.

HAIR CLIPPERS



No. Q0007—Small hand hair clipper for fine work.



No. Q0008—Large professional hand hair clipper for hair cutting and barbering.



Electric Hair Clipper
Works on either electric current.



No. P-4 Paring & Boning Knife

— Hand Hammered Rough Finish. Made of Queen Steel. Will not rust or stain and because of our secret tempering process it will stay sharp far longer than other knives. 3 inch blade. Best all-around utility knife for the kitchen.



No. S-2 Hand Hammered Rough Finish Steak Knife

— Rosewood handle. Made of Queen Steel. Will not rust or stain and because of our secret tempering process will stay sharp far longer than other knives. 4-inch blade. 8 inches overall. Tremendous value.



No. S626 — 6 (No. S-2) Hand Hammered Rough Finish Steak Knives individually set in an attractive lined gift box.

No. S624 — Same as above except contains 4 Steak Knives.



B-8



B-6



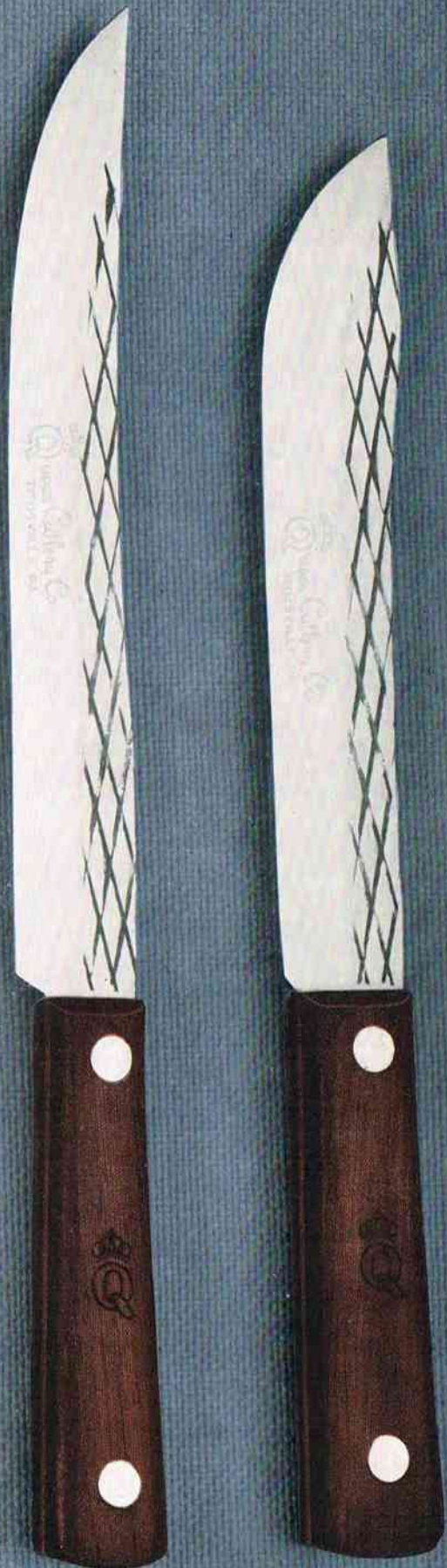
B-4



BO-6



P-3



*Hand Hammered
Rough Finish Kitchen Line*

Ground out of whole stock high carbon steel. Full tang. Rosewood handles. Very strong rivets. We especially make these knives for heavy duty and we recommend them to you as excellent value. Reading from left to right they are as follows:

- No. B-8 Butcher Knife 8 inch blade
- No. B-6 Butcher Knife 6 inch blade
- No. B-4 Butcher Knife 4 inch blade
- No. BO-6 Boning Knife 6 inch blade
- No. P-3 Paring Knife 3 inch blade
- No. S-8 Slicing Knife 8 inch blade
- No. B-7 Butcher Knife 7 inch blade



No. 219—7½-inch Professional Barber Shear—Electric furnace hot forged steel. Tempered and Rockwell tested to our high standards. Fully polished nickel finish. Holds keen cutting edge. Perfectly balanced.



No. 220—8-inch Bent Trimmer Shear — Ideal for dressmaking. One sharp point and one blunt point. Full nickel finish. Made of electric furnace hot forged steel. Tempered and Rockwell tested to our high standards. Holds keen cutting edge.



No. 221—7-inch Straight Heavy Trimmer Shear — For heavy duty cutting and household use. One sharp point and one blunt point. Full nickel finish. Made of electric furnace hot forged steel. Tempered and Rockwell tested to our high standards. Holds keen cutting edge.



No. 222—8-inch Straight Heavy Trimmer Shear — For extra heavy cutting and household use. One sharp point and one blunt point. Full nickel finish. Made of electric furnace hot forged steel. Tempered and Rockwell tested to our high standards. Holds keen cutting edge.



No. 223—6-inch Light Trimmer Shear

— For dressmaking and household use. One sharp point and one blunt point. Full nickel finish. Made of electric furnace hot forged steel. Tempered and Rockwell tested to our high standards. Holds keen cutting edge.



No. 224—7-inch Light Trimmer Shear

— For dressmaking and household use. One sharp point and one blunt point. Full nickel finish. Made of electric furnace hot forged steel. Tempered and Rockwell tested to our high standards. Holds keen cutting edge.



No. 225—8-inch Light Trimmer Shear

— For dressmaking and household use. One sharp point and one blunt point. Full nickel finish. Made of electric furnace hot forged steel. Tempered and Rockwell tested to our high standards. Holds keen cutting edge.



No. 226—6-inch Embroidery Scissors

— For embroidery and other delicate work. Two sharp points. Full nickel finish. Made of electric furnace hot forged steel. Tempered and Rockwell tested to our high standards. Holds keen cutting edge.



No. 227—5-inch Light Trimmer Scissors

— For embroidery and other delicate work. One sharp point and one blunt point. Full nickel finish. Made of electric furnace hot forged steel. Tempered and Rockwell tested to our high standards. Holds keen cutting edge.



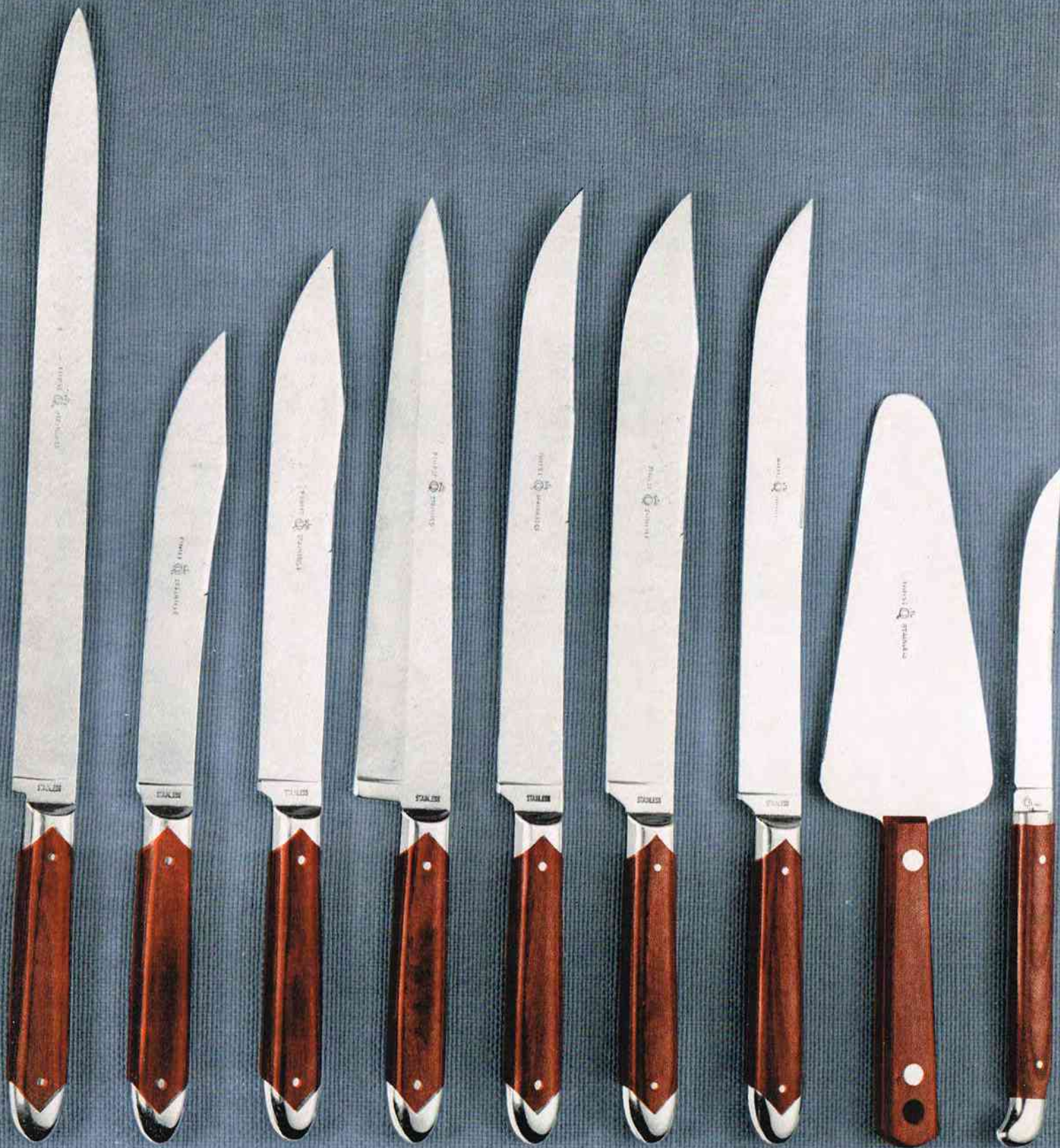
No. 228—4-inch Embroidery Scissors

— For embroidery and other delicate work. Two sharp points. Full nickel finish. Made of electric furnace hot forged steel. Tempered and Rockwell tested to our high standards. Holds keen cutting edge.



No. 232—7-inch Solid Steel Pinking Shear — Queen Pinking Shears are a delicately adjusted precision instrument, designed by cutlery craftsmen, to give the utmost satisfaction and wear. Great care has been given to assure easy, effortless performance and durability, and Queen Pinking Shears will pink a wider variety of fabrics than other pinking shears.

No. 233 — 8-inch Solid Steel Pinking Shear — same as above except 8 inches in length.



S-410

B-406

B-407

FC-400

BK-409

B-408

S-401

CK-409

U-401

Queen Steel

Formica Line

The Queen Steel used in these knives is the finest in the world. It is especially made to conform with our rigid specifications and will not rust or stain. Because of our secret tempering process, these knives will stay sharp far longer than other knives. New solid piece construction makes it impossible for any food particles to lodge in any part of these knives. Formica handles are impervious to heat, fire, water and will give very long life. Beautifully designed and scientifically balanced. Surgical grind. Reading from left to right they are as follows:



CF-411

BO-404

G-412

P-403

P-403sh

| | |
|---|--|
| No. S-410 Ham & Roast Beef Slicer | 10 inch blade |
| No. B-406 Carver | 6 inch blade |
| No. B-407 Carver | 7 inch blade |
| No. FC-400 French Cook Knife | 8 inch blade |
| No. BK-409 Bread Knife, serrated edge | 8 inch blade |
| No. B-408 Carver | 8 inch blade |
| No. S-401 Slicer | 8 inch blade |
| No. CK-409 Double Duty Spatula, Cake & Pie Knife, One edge serrated | 5 ⁵ / ₈ inch blade |
| No. U-401 Steak Knife | 4 ¹¹ / ₁₆ inch blade |
| No. CF-411 Carving Fork | 9 inch fork |
| No. BO-404 Boning Knife | 4 inch blade |
| No. G-412 Grape Fruit Knife, both edges serrated | 3 ⁵ / ₈ inch blade |
| No. P-403 Paring Knife | 3 inch blade |
| No. P-403sh Paring Knife | 2 ¹ / ₄ inch blade |

Queen Steel



FORMICA STEAK SET

No. S406— 6 Formica Steak Knives individually set in a beautiful solid walnut box, velveteen lined.

No. S408— Same as above, except contains 8 Formica Steak Knives.



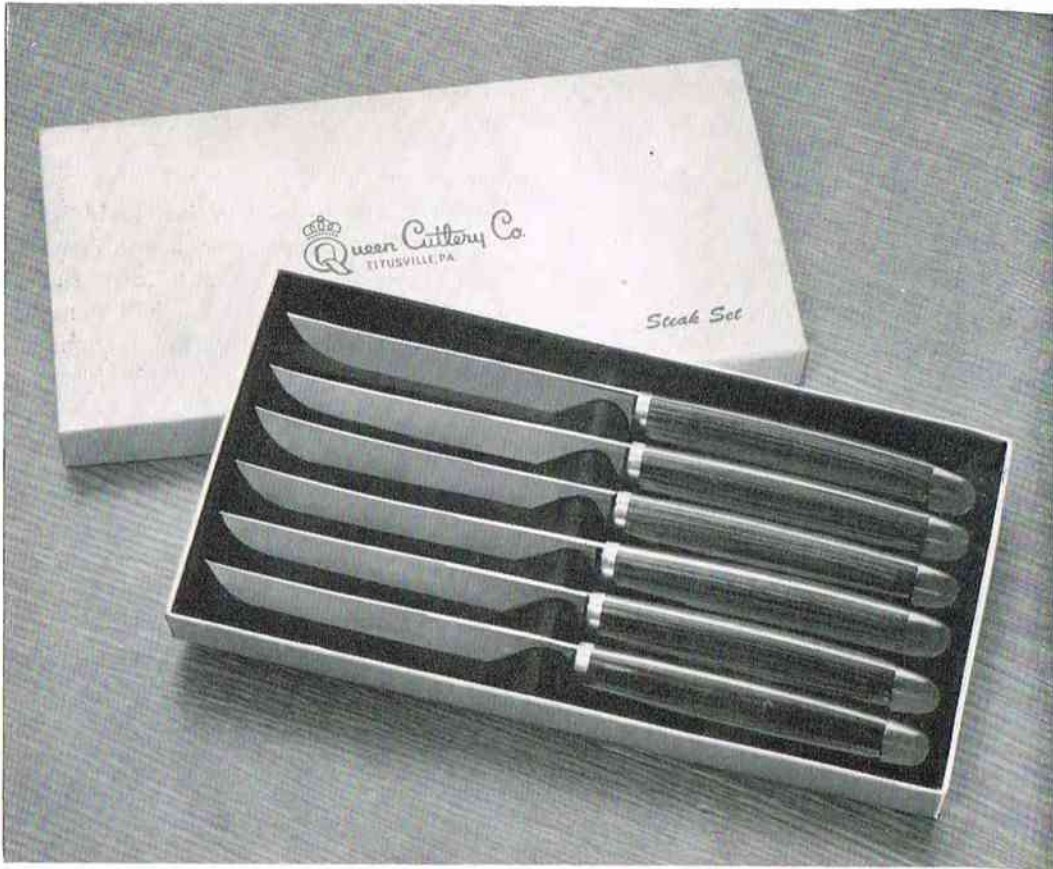
Queen Steel

No. FKR 404 — Solid Walnut Knife Set, containing a 7 inch Carver, 8 inch French Cook, 8 inch Slicer and 6 inch Carver from our Formica line. It may be laid flat or hung on wall. Individual slots and magnets hold each knife in place firmly. Individually packed.



No. C-502 — Two Piece Formica Carving Set containing a 10-inch Formica Slicer and Formica Fork. Individually set in an attractive lined gift box.

Queen Steel

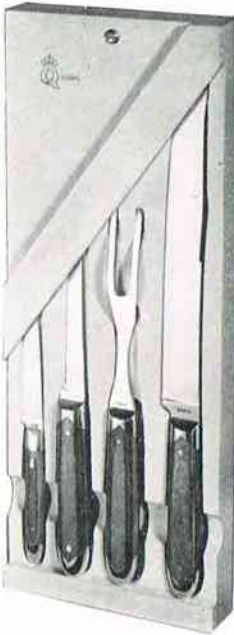


No. F-606 Formica Steak Set — 6 Formica Steak Knives individually set in an attractive lined gift box.

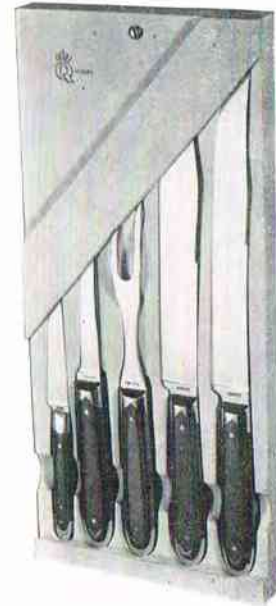
No. F-604 — Same as above, except contains 4 Formica Steak Knives.

No. F-608 — Same as above, except contains 8 Formica Steak Knives.

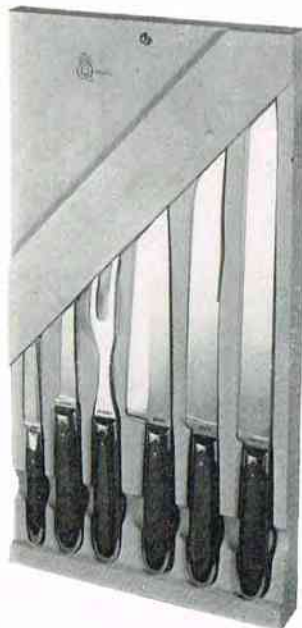
Formica Holsters



No. FH4C — Contains a Slicer, 8 inch blade; Boner, 4 inch blade; Parer, 3 inch blade and a 9 inch Carving Fork.



No. FH5A — Contains a Slicer, 8 inch blade; Carver, 8 inch blade; Boner, 4 inch blade; Parer, 3 inch blade and a 9 inch Carving Fork.



No. FH6D — Contains a Slicer, 10 inch blade; Slicer, 8 inch blade; French Cook, 8 inch blade; Boner, 4 inch blade; Parer, 3 inch blade and a 9 inch Carving Fork.

Each of the above Formica Holster Sets are made of clear white pine, neutral finish. They may be laid flat in a drawer or hung on a wall. Individually packed.



S-300



SS-300



CF-300



SF-101



H-300



U-101

Queen Steel

De Luxe Matched Table Line

We consider this line our finest creation. The Queen Steel used in these knives is the finest in the world. It is especially made to conform with our rigid specifications. Will not rust or stain and because of our secret tempering process, they will stay sharp far longer than other knives. Solid piece construction makes it impossible for any food particles to lodge in any part of the knives. The Genuine Frontier Bone Stag handles mean eternal handle life and best of all hand washing will not mar or dull the appearance of these handles but rather they improve with age. Scientifically designed and balanced to fit comfortably in the hand they make carving and eating a more delightful pleasure. Reading from left to right they are as follows:

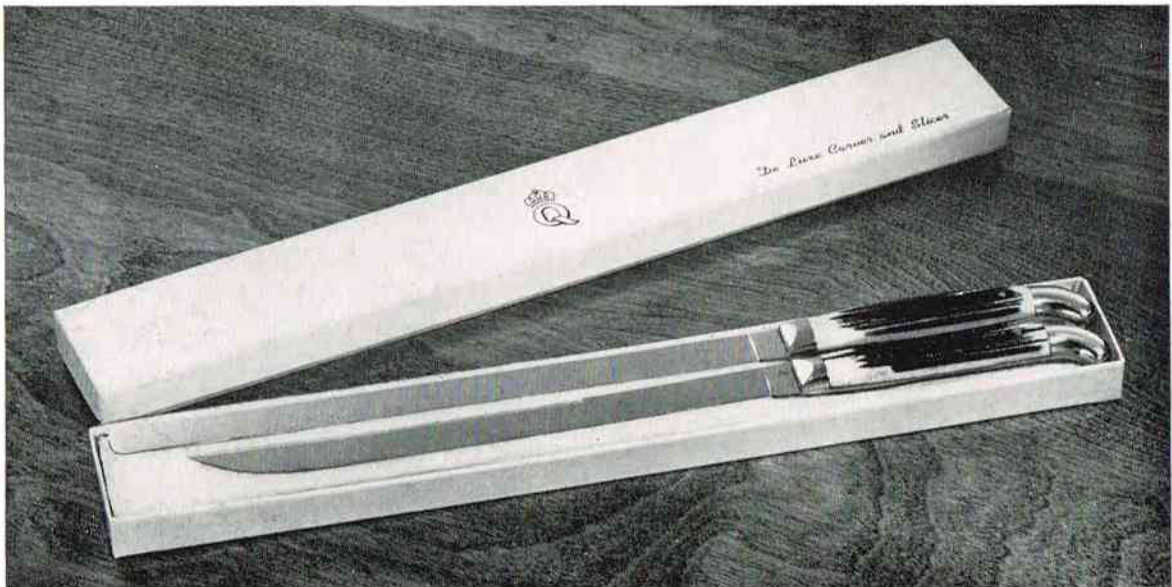
| | |
|--|--------------------|
| No. S-300 Slicer | 10 inch blade |
| No. SS-300 Sharpening Steel | 12 ½ inch steel |
| No. CF-300 Carving Fork | 10 ½ inch fork |
| No. SF-101 Matching 4 Tine Steak Fork | 9 inch fork |
| No. H-300 Steak Carver | 6 ¾ inch blade |
| No. U-101 Individual Steak Knife | 4 11/16 inch blade |
| No. P-300sh Paring Knife | 2 ¼ inch blade |
| No. C-300 Carver | 9 inch blade |
| No. P-300 Paring Knife | 3 inch blade |



Queen Steel



No. S102 "Steak Duet"—
Two De Luxe Steak Knives in
attractive gift box.



No. CS502 De Luxe Carver and Slicer Set — 9 inch De Luxe Carver and 10 inch De Luxe Slicer in
attractive gift box.



No. C-603 3 Piece De Luxe Carving Set — 9 inch De Luxe Carver, matching De Luxe Carving Fork and matching De Luxe Carving Steel. Individually set in attractive lined gift box.

No. C-602—Same as above, except two piece De Luxe Carving set containing 9 inch De Luxe Carver and matching De Luxe Carving Fork.

No. S-606 De Luxe Steak Set — Six De Luxe Steak Knives individually set in attractive lined gift box. ➡

No. S604—Same as above, except contains four De Luxe Steak Knives.

No. S-608—Same as above, except contains eight De Luxe Steak Knives.



Queen Steel



No. S108 De Luxe Steak Set — Eight De Luxe Steak Knives individually set in a beautiful solid walnut case lined with velveteen.

No. S106 — Same as above except contains 6 De Luxe Steak Knives.

Queen Steel



No. SF108 De Luxe Knife and Fork Set — Eight De Luxe Steak Knives and eight matching De Luxe Steak Forks individually set in a beautiful solid walnut case lined with velveteen.

No. SF106 — Same as above, except contains 6 De Luxe Steak Knives and Forks.

No. SF104 — Same as above, except contains 4 De Luxe Steak Knives and Forks.

No. S602 2 Piece De Luxe Steak Carving Set— De Luxe Carving Fork and De Luxe Steak Carver. Individually set in attractive gift box lined with sateen.



No. C702 2 piece De Luxe Carving Set—9 inch Carver and matching De Luxe Carving Fork individually set in beautiful solid walnut case lined with velveteen.

No. C703 3 piece De Luxe Carving Set—9 inch De Luxe Carver, matching De Luxe Carving Fork and matching De Luxe Sharpening Steel individually set in beautiful walnut case lined with velveteen.





No. C703S 3 piece De Luxe Carving Set—9 inch De Luxe Carver, 10 inch De Luxe Slicer and matching De Luxe Carving Fork individually set in beautiful solid walnut case lined with velveteen.

No. C704 4 piece De Luxe Carving Set—9 inch De Luxe Carver, 10 inch De Luxe Slicer, matching De Luxe Carving Fork and matching De Luxe Sharpening Steel individually set in beautiful solid walnut case lined with velveteen.



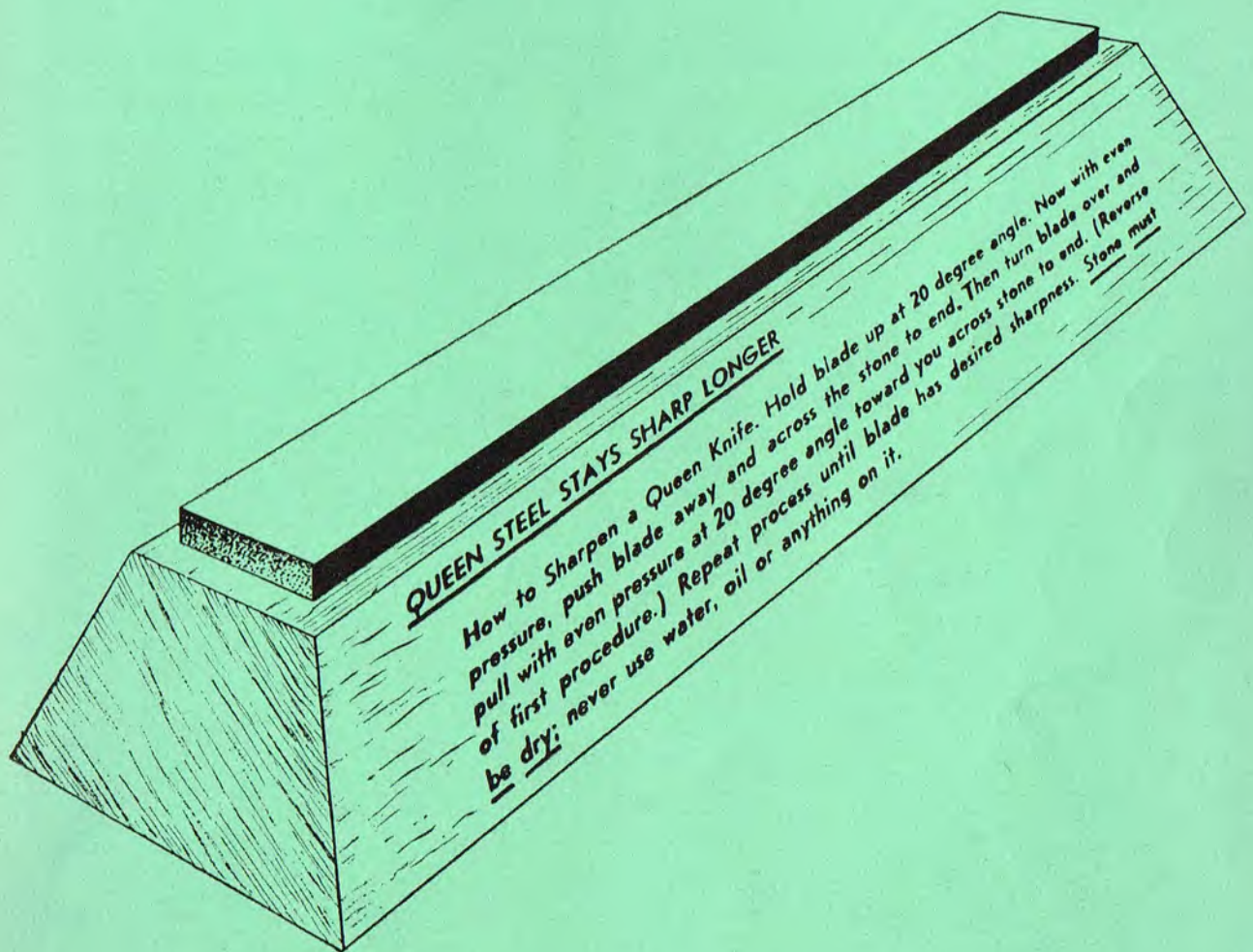
S-702 De Luxe Steak Carving Set—De Luxe Carving Fork and De Luxe Steak Carver individually set in beautiful solid walnut chest lined with velveteen.

Queen Steel



No. SCF118 "Family Steak Set" — Six De Luxe Steak Knives with matching De Luxe Carving Fork and matching De Luxe Handy Knife. Individually set in beautiful solid walnut case lined with velveteen. Created especially for steak lovers.

How to sharpen a Queen Knife



QUEEN STEEL STAYS SHARP LONGER

How to Sharpen a Queen Knife. Hold blade up at 20 degree angle. Now with even pressure, push blade away and across the stone to end. Then turn blade over and pull with even pressure at 20 degree angle toward you across stone to end. (Reverse of first procedure.) Repeat process until blade has desired sharpness. Stone must be dry; never use water, oil or anything on it. Now with even pressure, push blade away and across the stone to end. Then turn blade over and pull with even pressure at 20 degree angle toward you across stone to end. (Reverse of first procedure.) Repeat process until blade has desired sharpness. Stone must be dry; never use water, oil or anything on it.

These Special Sharpening Stones are made of the same stone we use in the factory to sharpen our knives. No other stone or steel will sharpen our knives properly. We sell these stones only to our authorized dealers.

