



Queen Steel

QUEEN

CUTLERY COMPANY

Office: 10 COMMERCE COURT, NEWARK 2, N. J.

Factory: TITUSVILLE, PA.

Please Order In Units Of Our Standard Packaging

PACKAGING

HUNTING & FISHING

Following Numbers Individually Boxed:

#78 - 80 - 81

All other numbers: Half Dozen to a box

KNIFE, AXE & SHEATHS

All Numbers Individually Boxed

POCKET AND PEN KNIVES

All Numbers: Half Dozen to a box

SCISSORS AND SHEARS

All Numbers: Half Dozen to a Box

Except — #232 & 233 which are individually boxed

KITCHEN LINE

#P3 & P4 — Dozen to a box

All other numbers: Half Dozen to a Box

KITCHEN LINE SETS

All Sets Boxed Individually

FORMICA LINE

#P403 & P403sh — Dozen to a Box

All other numbers: Half Dozen to a Box

FORMICA SETS

All Sets Boxed Individually

DELUXE LINE

#P300 & P300SH — Dozen to a Box

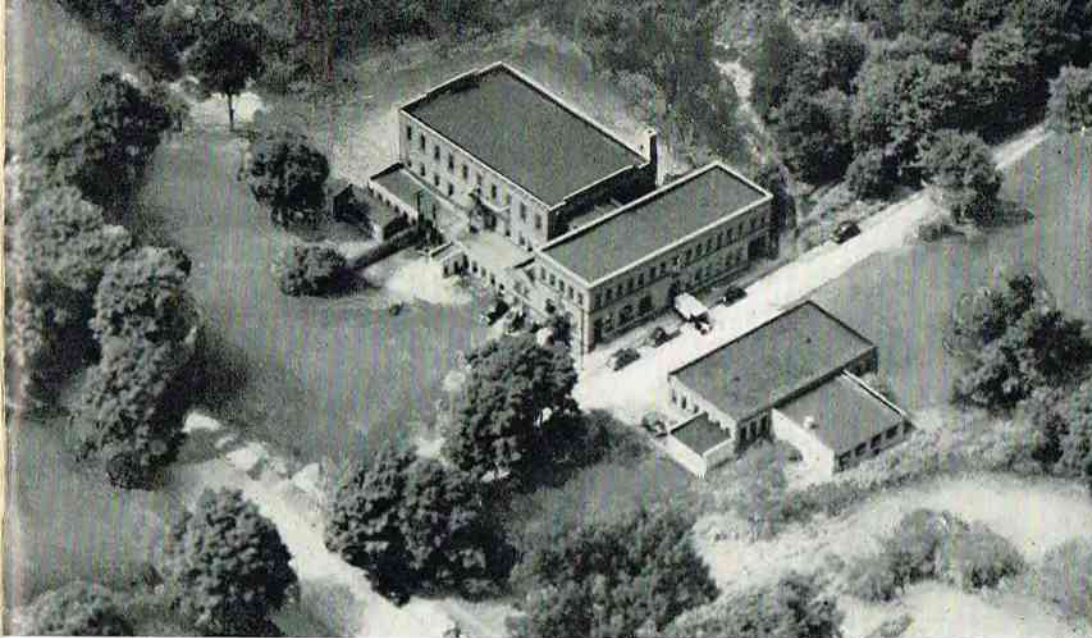
All other numbers: Half Dozen to a Box

DELUXE SETS

All Sets Boxed Individually

KITCHEN SET & BARBECUE SET

All Sets Boxed Individually



THE FACTORY
Aerial photo of the
Factory buildings at
Titusville, Penna.

Queen Steel Knives are made and styled for the independent Retail Hardware Store in the town or small city. Queen makes it possible for the independent Retail Hardware Store to buy all of their needed requirements from one source at the lowest direct factory prices.

Queen Steel Knives are of interest to Hardware Store Owners because Queen Steel knives will not rust and will not stain and will stay sharp far longer than other knives. The Store Owner no longer has to worry about his stock of knives remaining in good condition. That's why Queen is growing the fastest in popularity in the quality field of knives.

Prompt delivery and courteous efficient service coupled with the very finest quality products at the most reasonable prices make up the balance of the winning combination and tell you why more Store Owners are featuring Queen than ever before in the history of our Company.

QUEEN CUTLERY COMPANY

Index

	Pages
Axes	12
De Luxe Matched Gift Sets	44-48
De Luxe Line	42-43
Display Cases	2-3
"500" Hollow Ground Holster Sets	36
"500" Hollow Ground Series	37
Formica Line	38-39
Formica Gift Sets	40-41
Hand Hammered Kitchen Line	34-35
Hunting & Fishing Knives	4-11
Pinking Shears	31
Pocket & Pen Knives	13-30
Scissors & Shears	32-33

Most of our accounts have this display



No. 4-A Display Case

Large Floor Display Case, light oak finish. 45 1/2 inches high with display panel measuring 28 x 38 inches. Storage space in rear with lock. We supply this case with display panel fully mounted to our Dealers on orders for 1/2 dozen of stock on each pattern for 40 or more patterns.

The patterns mounted on the display panel are taken from the stock ordered. If desired we will place a marking button under each pattern identifying the pattern number and showing the Dealer's retail resale price.

This case should be mounted with all the patterns you carry in stock.

Display Cases Save Half Of Your Salesman's Time

Our most successful dealers have this display



No. 5-A Display Case

Our largest Floor Display Case — Light Oak Finish. Stands 45½ inches high and contains two display panels each measuring 28 x 38 inches. Storage space in rear with lock. We supply this case with display panel fully mounted to our Dealers on orders for ½ dozen of stock on each pattern for 80 or more patterns.

The patterns mounted on the display panel are taken from the stock ordered.

If desired we will place a marking button under each pattern identifying the pattern number and showing the Dealer's retail resale price.

This case should be mounted with all the patterns you carry in stock.

Display Cases Double Your Sales

Queen Steel

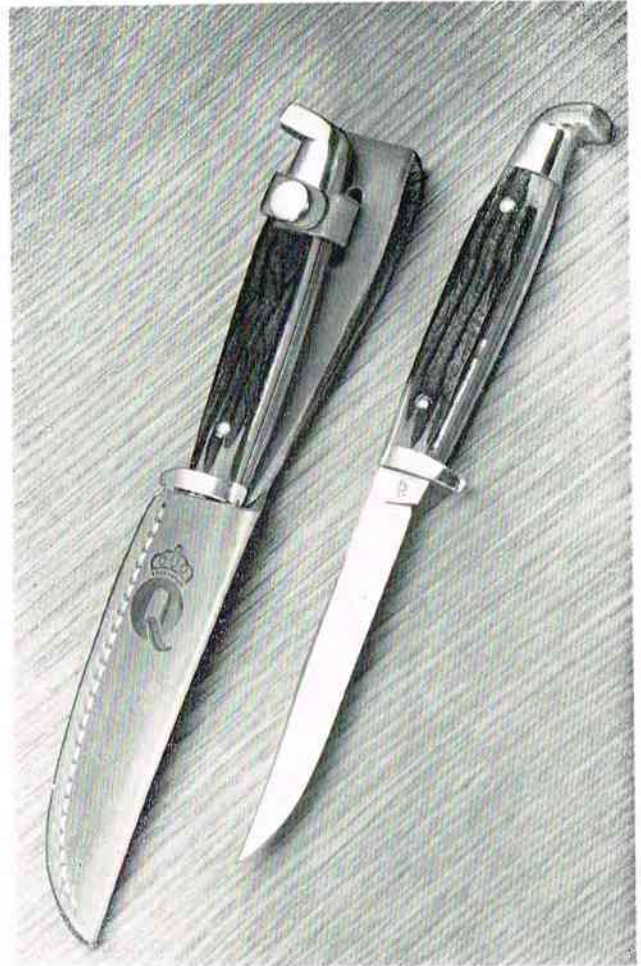


No. 78 Hunting & Combat Knife — This is the finest big game hunting knife in the world. Made of Queen Steel. Will not rust or stain and because of our secret tempering process, it will stay sharp far longer than other knives. Solid one-piece construction so that the handle won't disengage from the knife. Solid brass guard and the handle is made from the finest imported India Stag. Made in perfect proportion which insures perfect balance. Double sabre grind and note that both sides of the blade has sharp cutting edges which is important when skinning large game. Patterned after the original Bowie knife. Made of the very finest materials and with the most expert labor of our skilled master cutlerers. The sheath is made of the finest top grain cowhide embossed with hand white lacing and a protective filler so the blade won't cut the lacing. Individually boxed. 7-inch blade, cutting edge 6-inches, knife is 11 1/2-inches overall in length.

Queen Steel



No. 73 Hunting Knife — Genuine Frontier Bone stag barehead handle with 4-inch flat ground blade. Made of Queen Steel. Will not rust or stain and because of our secret tempering process, it will stay sharp far longer than other knives. Complete with leather sheath made of top grain cowhide, saddle stitched with handsomely embossed design. Tremendous value.

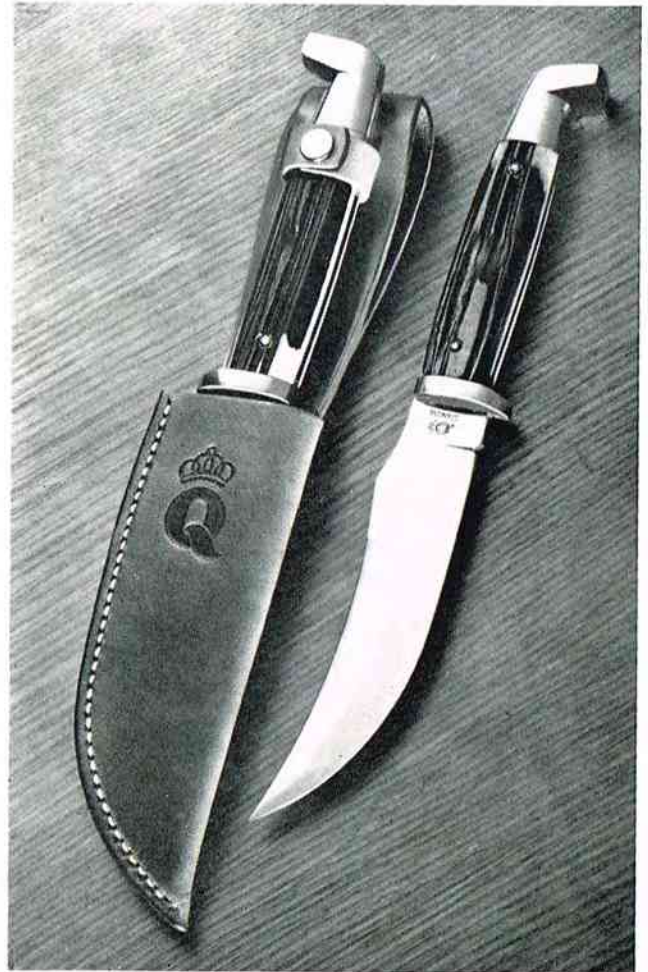


No. 74 Hunting Knife — Genuine Frontier Bone stag handle with 3 5/8-inch flat ground blade. Made of Queen Steel. Will not rust or stain and because of our secret tempering process, it will stay sharp far longer than other knives. Complete with leather sheath made of top grain cowhide, saddle stitched with handsomely embossed design. One of our best selling hunting knives.

Queen Steel



No. 76 Fishing Knife — Genuine Formica Handle with 4 inch blade. Scaler on back of blade. Made of Queen Steel. Will not rust or stain and because of our secret tempering process will stay sharp far longer than other knives. Complete with leather sheath made of top grain cowhide, saddle stitched with handsomely embossed design. Best selling sheath fishing knife.



No. 77 Hunting Knife — Genuine Frontier Bone stag handle. 5 inch large wide scimitar blade. 9 1/2 inches overall. Made of Queen Steel. Will not rust or stain and because of our secret tempering process, will stay sharp far longer than other knives. Complete in leather sheath made of top grain cowhide, saddle stitched with handsomely embossed design. The hunting knife for big game. One of our best selling hunting knives.

Queen Steel



No. 79 Hunting Knife — Genuine Frontier Bone Stag handle. 3 1/2-inch flat ground blade. Made of Queen Steel. Will not rust or stain and because of our secret tempering process, it will stay sharp far longer than other knives. Most popular knife for sticking and bleeding game. Complete with leather sheath made of top grain cowhide, saddle stitched with handsomely embossed design.



No. 80 Combination Hunting Set — Genuine Frontier bone stag handles. One hunting knife with 4 inch saber ground blade with blood groove and one Rabbit knife with 3 inch flat ground blade. Made of Queen Steel. Will not rust or stain and because of our secret tempering process, will stay sharp far longer than any other knives. Complete in one handsome double leather sheath made of top grain cowhide, saddle stitched with handtooled floral design. Individually boxed.

No. 81 Combination Hunting Set — Same as above, except simulated pearl handles.

Queen Steel



No. 82 Hunting Knife — Genuine *Frontier* bone stag handle with 4 inch saber ground blade with blood groove. Made of Queen Steel. Will not rust or stain and because of our secret tempering process, will stay sharp far longer than other knives. Complete in leather sheath made of top grain cowhide, saddle stitched with handsomely embossed design. One of our best selling hunting knives.

No. 83 Hunting Knife — Same as above, except simulated pearl handle.



No. 84 Hunting Knife — 4 inch Saber ground blade with blood groove. Made of Queen Steel. Will not rust or stain and because of our secret tempering process, will stay sharp far longer than other knives. Colorfully decorated leather handle with perma-gloss finish. Complete in leather sheath made of top grain cowhide, saddle stitched with handsomely embossed design.

Queen Steel



No. 85 Finn or Trout Knife — Genuine *Frontier* bone stag handle with 3 inch flat ground blade. Made of Queen Steel. Will not rust or stain and because of our secret tempering process, will stay sharp far longer than any other knives. Most popular knife for fishing, hunting and all-purpose utility. Complete with leather sheath made of top grain cowhide, saddle stitched with handsomely embossed design. Best selling hunting knife in our line.

No. 86 Finn or Trout Knife — Same as above, except simulated pearl handle.

No. 91 — Same as above, except with amber handle.



No. 75 Hunting & Combat Knife — Made of Queen Steel. Will not rust or stain and because of our secret tempering process, will stay sharp far longer than other knives. Double sabre grind — 6-inch blade with both sides of blade having sharp cutting edges. Patterned after the original Bowie knife. 10 1/2-inches overall. Sheath is made with the finest top grain cowhide leather, saddle stitched and handsomely embossed. New strap holds knife fast in sheath.

Queen Steel



No. 89 Hunting Knife — Genuine *Frontier* bone stag handle with $3\frac{5}{8}$ inch flat ground blade. Made of Queen Steel. Will not rust or stain and because of our secret tempering process, will stay sharp far longer than other knives. Complete in leather sheath made of top grain cowhide, saddle stitched with handsomely embossed design. A favorite knife for hunting and skinning wild game.



No. 90 Hunting Knife — Attractive multicolored handle. 4 inch blade. $7\frac{3}{4}$ inches overall. Made of Queen Steel. Will not rust or stain and because of our secret tempering process, will stay sharp far longer than other knives. Complete in leather sheath made of top grain cowhide, saddle stitched with handsomely embossed design.

Queen Steel



No. 95 Hunting Knife — Genuine *Frontier* bone stag handle with 5 inch saber ground blade with blood groove, 9 1/2 inches overall. Made of Queen Steel. Will not rust or stain and because of our secret tempering process, will stay sharp far longer than other knives. Complete in leather sheath made of top grain cowhide, saddle stitched with handsomely embossed design. The hunting knife for big game. One of our best selling hunting knives.



No. 98 Skinning Knife — Genuine *Frontier* bone stag handle with 4 inch scimitar shaped flat blade. Made of Queen Steel. Will not rust or stain and because of our secret tempering process, will stay sharp far longer than other knives. Complete in leather sheath made of top grain cowhide, saddle stitched with handsomely embossed design. Sportsman's favorite.



◀
KA80 — Knife & Axe Combination — 11 1/2 ounce Hunting Axe. Finest quality steel. Chromium plated. Solid one-piece construction — 8-inch handle. 4-inch sabre ground hunting knife. Complete with leather sheath attached to Axe.



▶
No. SBA78 — Single bit 1 3/4 pound Camp Axe. 16 inch hickory handle. Finest quality steel. Complete with leather sheath, saddle stitched and riveted. Slot in sheath for carrying on the belt.

▶
No. DBA 79 — Double bit one pound Utility Axe. 15 inch hickory handle. Finest quality steel. Complete with fine leather sheath made of top grain cowhide, saddle stitched with handsomely embossed design. Slot in sheath for carrying on the belt.



SBA80 — Single bit 11 1/2 ounce Archer's Axe. Finest quality steel. Chromium plated. Solid one-piece construction — 8-inch handle. Complete with leather sheath, saddle stitched. Slot in sheath for carrying on the belt.



◀
No. KA79 Knife and Axe Combination — One pound double bit Utility Axe. 15 inch hickory handle. Finest quality steel. Handsome leather Axe sheath made of top grain cowhide, saddle stitched with embossed design. Sheath slotted for carrying on the belt. 4 inch sabre ground blade Hunting Knife with genuine *Frontier* bone stag handle in leather sheath made of top grain cowhide, saddle stitched with handsomely embossed design. Hunting knife and sheath attach to axe sheath and axe handle which makes a fine Knife and Axe combination.

Queen Steel



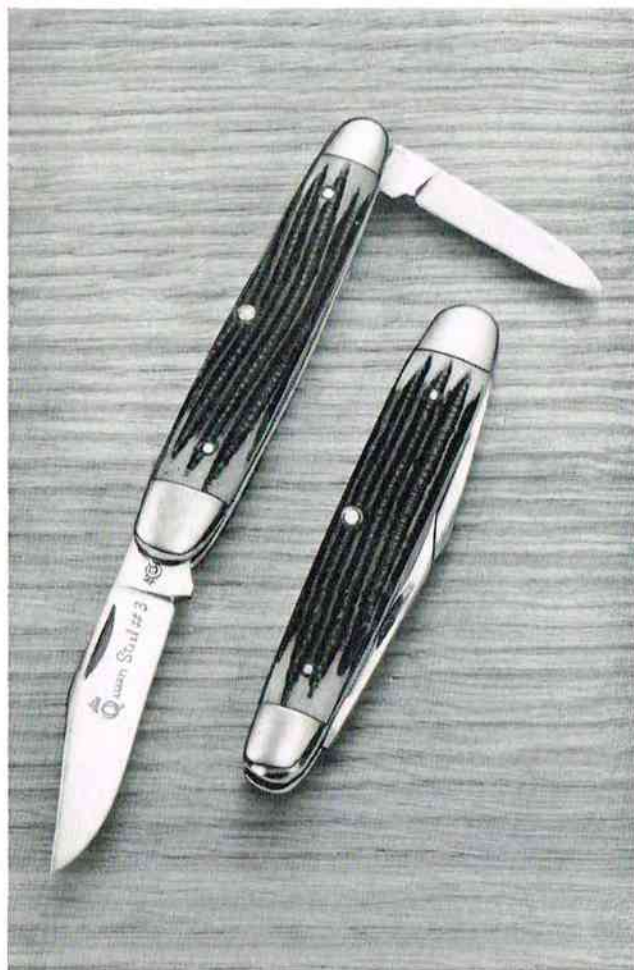
No. 1 Pruning or Hawkbill Pocket Knife — Rosewood handle. Made of Queen Steel. Will not rust or stain and because of our secret tempering process, it will stay sharp far longer than other knives. Nickel Silver Bolster, brass linings. Complete with opening for leather thong. 3-inch blade with $2\frac{3}{4}$ -inch cutting edge. $4\frac{1}{8}$ inches long when closed. Sturdy, heavy duty pocket knife used by farmers, carpenters, electricians, etc. One of our best selling numbers.



No. 2 Serpentine Pattern — Two blade pocket knife. Genuine Frontier bone stag handle. Made of Queen Steel. Will not rust or stain and because of our secret tempering process, it will stay sharp far longer than other knives. Nickel Silver bolsters, brass linings. $2\frac{1}{16}$ -inch clip blade with $2\frac{1}{4}$ -inch cutting edge and $1\frac{3}{4}$ -inch pen blade with $1\frac{1}{2}$ -inch cutting edge. $3\frac{1}{4}$ inches long when closed. One of our best selling numbers.

No. 2-A — Same as above except with Amber handle.

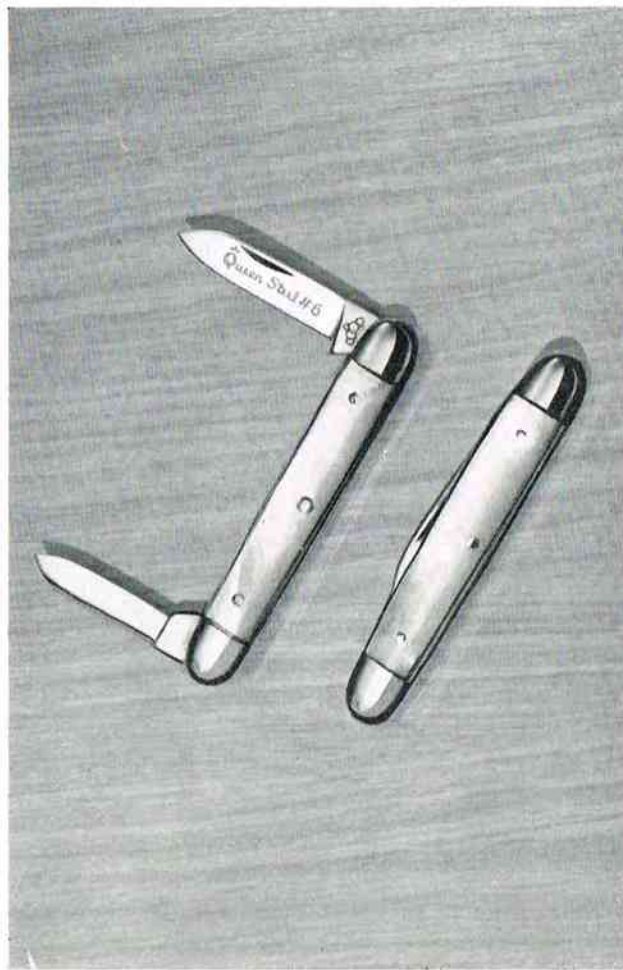
All Queen Pocket Knives have their individual pattern number etched on the blade. A very helpful service for the dealer.



No. 3 Sleeveboard Pattern — Two blade pen knife. Genuine Frontier bone stag handle. Made of Queen Steel. Will not rust or stain and because of our secret tempering process will stay sharp far longer than other knives. Nickel Silver Double bolsters, brass linings. 2-inch clip blade with 1 $\frac{3}{4}$ -inch cutting edge and 1 $\frac{1}{2}$ -inch pen blade with 1 $\frac{1}{4}$ -inch cutting edge. 3 $\frac{5}{8}$ inches long when closed.

No. 4 — Same as No. 3 except with Genuine Mother of Pearl Handle.

No. 21 — Same as No. 3 except with 2 inch Spear Point blade instead of Clip blade. See illustration Pattern No. 18 for an idea of what a spear point blade looks like.



No. 6 Senator Pattern — Two-blade pen knife. Genuine Mother of Pearl Handle. Made of Queen Steel. Will not rust or stain and because of our secret tempering process will stay sharp far longer than other knives. Nickel Silver double bolsters, brass linings. 1 $\frac{1}{8}$ -inch spear blade with 1 $\frac{1}{4}$ -inch cutting edge and 1 $\frac{3}{8}$ inch pen blade with 1-inch cutting edge. 2 $\frac{1}{2}$ inches long when closed.

No. 8 — Same as above except with Bale Ring.

No. 5 — Same as No. 6 except with genuine Frontier bone stag handle and chrome vanadium steel.

No. 7 — Same as No. 5 except with Bale Ring.

Queen Steel



No. 9 Stockmen's Pattern — Three blade pocket knife. Genuine *Frontier* bone stag handle. Made of Queen Steel. Will not rust or stain and because of our secret tempering process will stay sharp far longer than other knives. Nickel Silver double bolsters, brass linings. 3-inch clip blade with $2\frac{5}{8}$ -inch cutting edge, 2-inch spey blade with $1\frac{3}{4}$ -inch cutting edge and $2\frac{1}{8}$ -inch sheepsfoot blade with $1\frac{7}{8}$ -inch cutting edge. 4 inches long when closed. One of our best selling numbers.

No. 9-A — Same as above except with Amber handle.



No. 18 Heavy Duty Pattern — Two blade jack knife. Genuine *frontier* bone stag handle. Made of Queen Steel. Will not rust or stain and because of our secret tempering process, it will stay sharp far longer than other knives. Nickel silver double bolsters, brass linings. Spear point blade, $2\frac{5}{8}$ -inches long with $2\frac{3}{8}$ inches cutting edge — and pen blade $2\frac{1}{8}$ inches long and $1\frac{7}{8}$ -inch cutting edge. $3\text{-}11/16$ inches long when closed.

No. 10 Heavy Duty Pattern — Same as above with $2\frac{5}{8}$ -inch clip blade instead of spear point blade. One of our best selling numbers.

All Queen Pocket Knives have their individual pattern number etched on the blade. A very helpful service for the dealer.

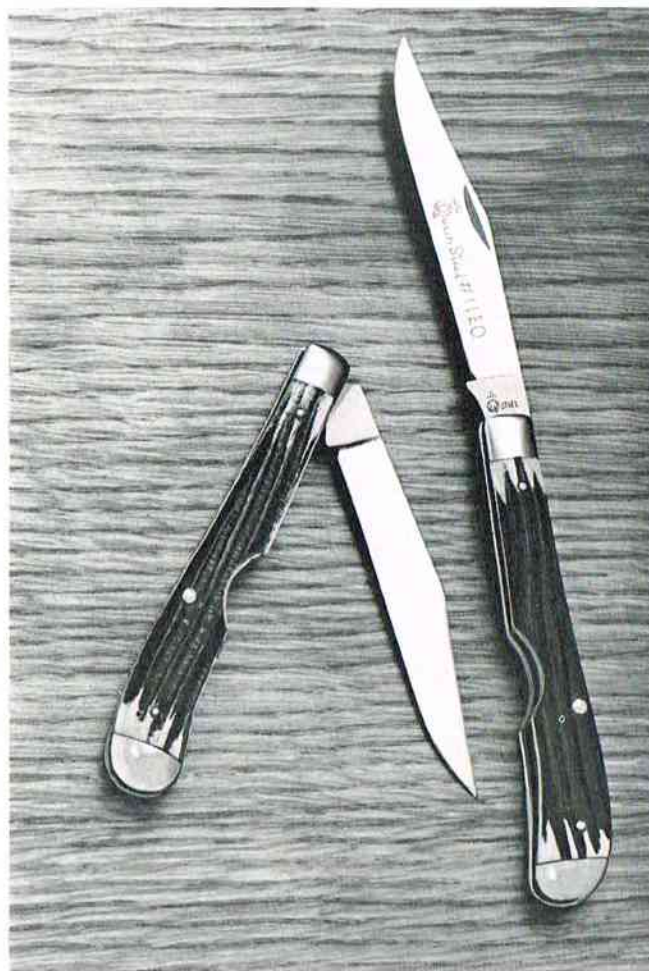


No. 11 Utility Pattern — Single blade heavy duty pocket knife. Genuine Frontier bone stag handle. Made of Queen Steel. Will not rust or stain and because of our secret tempering process, it will stay sharp far longer than other knives. Nickel Silver double bolsters, brass linings. $3\frac{3}{4}$ -inch clip blade with 3-inch cutting edge. A favorite of sportsmen and fishermen as well as for general use. One of our best selling numbers.

No. 12 — Same as above except with simulated Pearl handle.

No. 13 — Same as above except with Amber handle.

No. 41 — Same as above except with brilliant red handle.



No. 11-EO — Easy Opener Pattern — Genuine Frontier bone stag handle. Made of Queen Steel. Will not rust or stain and because of our secret tempering process, it will stay sharp far longer than other knives. Nickel silver double bolsters, brass linings. One large clip blade, 3-inch cutting edge — 4-inches overall when closed.

Queen Steel



No. 14 Dogleg Pattern — Two blade small jack knife. Genuine Frontier bone stag handle. Made of Queen Steel. Will not rust or stain and because of our secret tempering process, it will stay sharp far longer than other knives. Nickel Silver Double bolsters, brass linings. 2 $\frac{1}{8}$ -inch clip blade with 1 $\frac{7}{8}$ -inch cutting edge and 1 $\frac{1}{16}$ -inch pen blade with 1 $\frac{1}{8}$ -inch cutting edge. 2 $\frac{3}{4}$ inches long when closed. One of our most favored patterns. One of our best selling numbers.

No. 14P — Same as above except with Mother of Pearl handle.

No. 17 — Same as above except with Amber handle.



No. 15 Congress Pattern — Two blade pocket knife. Genuine bone stag handle. Made of Queen Steel. Will not rust or stain and because of our secret tempering process will stay sharp far longer than other knives. Nickel Silver double bolsters, brass linings. 2-inch sheepfoot blade with 1 $\frac{3}{4}$ -inch cutting edge and 1 $\frac{1}{16}$ -inch pen blade with 1 $\frac{3}{8}$ -inch cutting edge. 3 $\frac{1}{2}$ inches long when closed. Always a leading number. One of our best selling numbers.

No. 33 Small Four Blade Congress Pattern — Same as above except with a 2 inch sheepfoot blade at each end and a 1 $\frac{3}{4}$ inch pen blade at each end. 3 $\frac{1}{2}$ inches overall when closed.

All Queen Pocket Knives have their individual pattern number etched on the blade. A very helpful service for the dealer.



No. 16 Serpentine Pattern — Three blade pocket knife. Genuine Frontier bone stag handle. Made of Queen Steel. Will not rust or stain and because of our secret tempering process will stay sharp far longer than other knives. Nickel Silver double bolsters, brass linings. 2 $\frac{3}{8}$ -inch clip blade with 2 $\frac{1}{4}$ -inch cutting edge, 1 $\frac{7}{8}$ -inch sheepfoot blade with 1 $\frac{1}{2}$ -inch cutting edge and 1 $\frac{1}{8}$ -inch pen blade with 1 $\frac{3}{8}$ -inch cutting edge. 3 $\frac{1}{4}$ inches long when closed. A stable number. One of our best selling numbers.

No. 16-A — Same as above except with Amber handle.



No. 19 — Heavy Duty Trappers Pattern — Genuine frontier bone stag handle. Very sturdily constructed. Made of Queen Steel. Will not rust or stain and because of our secret tempering process, it will stay sharp far longer than other knives. Nickel silver double bolsters, brass linings. One large clip blade with 3-inch cutting edge, one large spey blade with 3 $\frac{1}{8}$ -inch cutting edge. 4 $\frac{1}{8}$ inches long when closed. Glazed satin finish on blades.

No. 19-A — Same as above except with amber plastic handle.

Queen Steel



No. 20 Folding Outdoors Knife — Very sturdy construction. Genuine bone stag handle. Made of Queen Steel. Will not rust or stain and because of our secret tempering process, it will stay sharp far longer than other knives. Nickel Silver double bolsters, brass linings. Large clip blade $3\frac{7}{8}$ inches long with $3\frac{1}{2}$ -inch cutting edge. Knife when closed 5 inches overall. A popular number.



No. 22 Barlow Knife, Clip Pattern — Our Barlow Knife has always enjoyed top popularity. Genuine bone stag handle. Heavy duty bolster. Brass Linings. Large clip blade $2\frac{1}{2}$ inches long with $2\frac{1}{4}$ -inch cutting edge and pen blade 2 inches long with $1\frac{7}{8}$ -inch cutting edge. $3\frac{1}{2}$ inches overall when closed. One of our best selling numbers.

No. 23 — Same as above except with $2\frac{1}{2}$ -inch spear point blade instead of clip blade. See No. 18 for an illustration of spear point blade.

No. 25 — Same as above, except with easy opening $2\frac{1}{2}$ -inch razor blade instead of clip blade.

No. 27 — Same as above except with $2\frac{1}{2}$ -inch Sheepfoot blade instead of clip blade.

All Queen Pocket Knives have their individual pattern number etched on the blade. A very helpful service for the dealer.



No. 24 Trapper's Pattern — Genuine Frontier Bone stag handle. Sturdily constructed. Made of Queen Steel. Will not rust or stain and because of our secret tempering process, it will stay sharp far longer than other knives. Nickel Silver double bolsters, brass linings. $3\frac{5}{8}$ -inch clip blade with 3-inch cutting edge; spey blade $3\frac{5}{8}$ inches long with 3-inch cutting edge. 4 inches long when closed. Standard pattern. One of our best selling numbers.

No. 30 — Same as above, except with amber handle. One of our best selling numbers.



No. 26 Serpentine Pattern — Three blade pocket knife. Genuine Frontier bone stag handle. Made of Queen Steel. Will not rust or stain and because of our secret tempering process, it will stay sharp far longer than other knives. Nickel Silver double bolsters, brass linings. $2\frac{1}{2}$ -inch clip blade with $2\frac{1}{4}$ -inch cutting edge. $1\frac{3}{4}$ -inch spey blade with $1\frac{1}{2}$ -inch cutting edge and $1\frac{7}{8}$ -inch sheepsfoot blade with $1\frac{5}{8}$ -inch cutting edge. $3\frac{1}{4}$ inches long when closed. One of our best selling numbers.

No. 26-A — Same as above except with Amber handle.

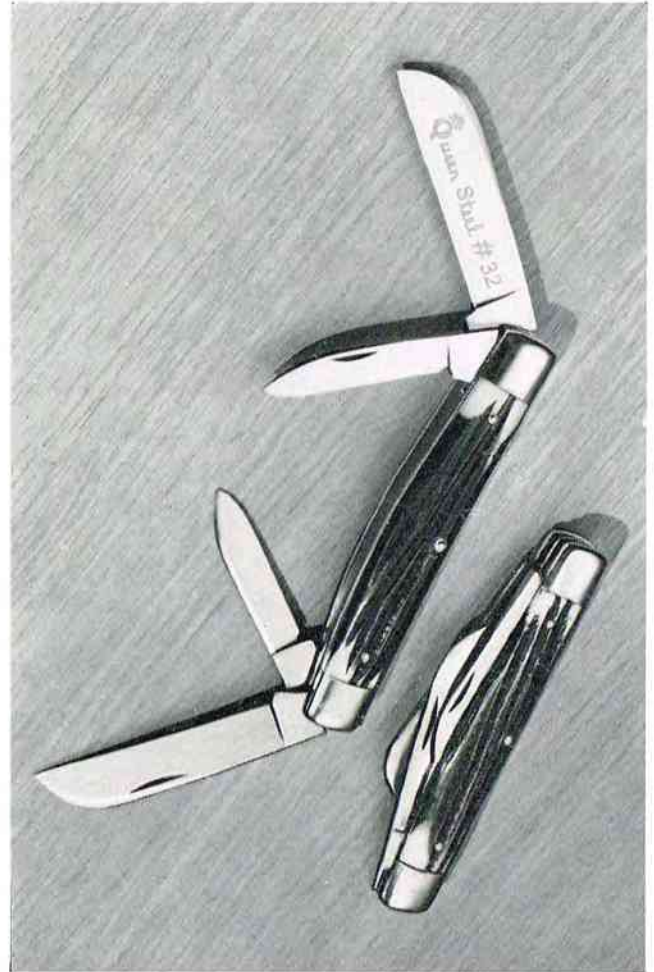
No. 57 — Same as above except with genuine Mother of Pearl handle.

Queen Steel



No. 28 Large Farmer's Knife, Clip Pattern — Large 2 Blade jack knife. Genuine Frontier bone stag handle. Made of Queen Steel. Will not rust or stain and because of our secret tempering process will stay sharp far longer than other knives. Nickel Silver double bolsters, brass linings. Large clip blade is 3 1/2 inches long with 3 1/8 inch cutting edge and pen blade 2 3/8 inches long with 2 1/8-inch cutting edge. 4 1/2 inches overall when closed. One of our best selling numbers.

No. 29 — Same as above except with 3 1/2-inch spear point blade instead of clip blade. See No. 18 for an illustration of spear point blade.



No. 32 Large four blade Congress Pattern — Genuine Frontier bone stag handle. Made of Queen Steel. Will not rust or stain and because of our secret tempering process, it will stay sharp far longer than other knives. Nickel Silver double bolsters, brass linings. 2 1/2-inch Sheepsfoot blade on each end with 2 1/4-inch cutting edge and also a 2-inch pen blade at each end with 1 3/8-inch cutting edge. 4 inches overall when closed. A favorite knife of carpenters and skilled workmen.

No. 31 — Large two blade Congress pattern. Same as above except with one Sheepsfoot blade at one end and one 2-inch pen blade at the other end.

All Queen Pocket Knives have their individual pattern number etched on the blade. A very helpful service for the dealer.



No. 35 Small Three Blade Serpentine Pattern

— Genuine Frontier bone stag handle. Made of Queen Steel. Will not rust or stain and because of our secret tempering process will stay sharp far longer than other knives. Nickel Silver double bolsters, brass linings. 2-inch clip blade with $1\frac{7}{8}$ -inch cutting edge, $1\frac{3}{8}$ -inch sheepfoot blade with 1-inch cutting edge and $1\frac{1}{4}$ -inch pen blade with 1-inch cutting edge. $2\frac{5}{8}$ inches long when closed. One of our best selling numbers.

No. 34 — Same as above except with Amber handle.

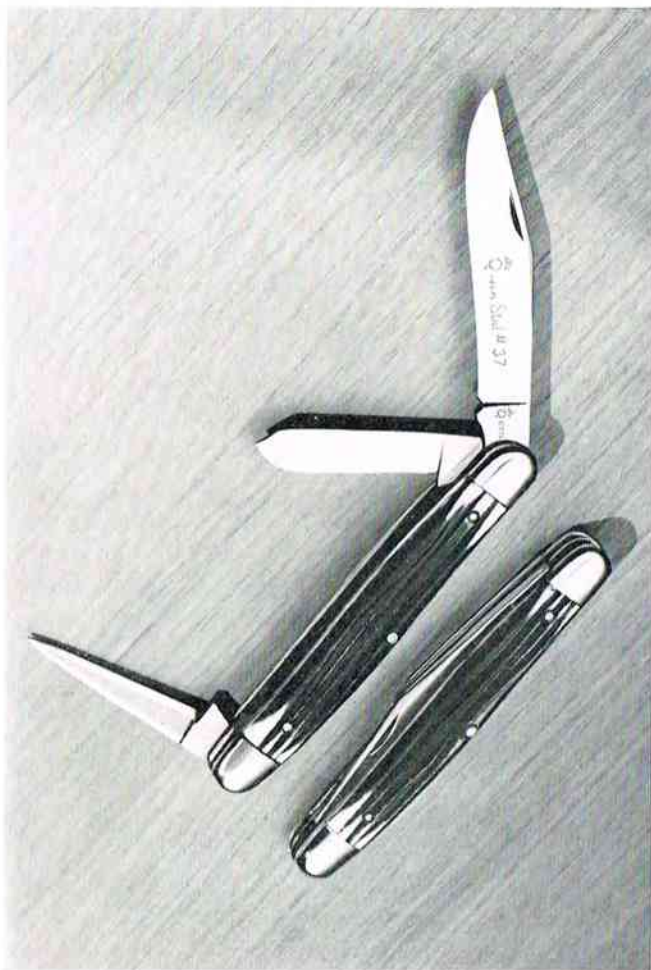
No. 54 — Same as above except with genuine Mother of Pearl handles.



No. 36 One Blade Lock Pattern

— Genuine Frontier bone stag handle. Made of high carbon finest selected tool steel. Nickel Silver bolsters, brass linings. Large clip blade $3\frac{3}{8}$ inches long with $3\frac{1}{8}$ -inch cutting edge. $4\frac{1}{2}$ inches long overall when closed. Blade of knife locks rigidly when opened.

Queen Steel

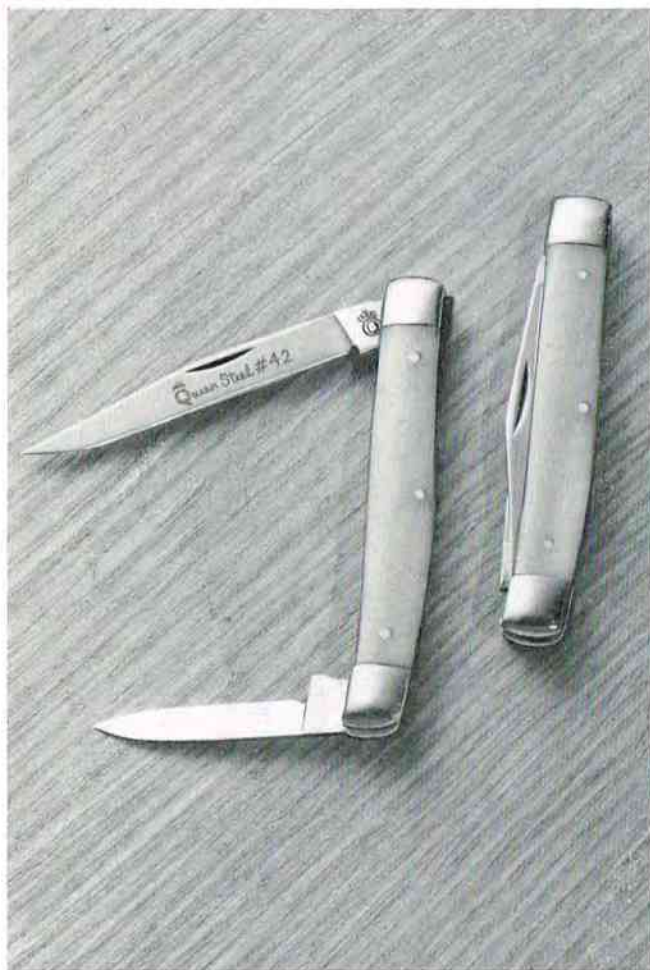


No. 37 Stockmen's Belt Punch Pattern — Large three blade knife. Genuine Frontier bone stag handle. Made of Queen Steel. Will not rust or stain and because of our secret tempering process will stay sharp far longer than other knives. Nickel Silver double bolsters, brass linings. $2\frac{7}{8}$ -inch clip blade with $2\frac{5}{8}$ -inch cutting edge, $1\frac{7}{8}$ -inch spey blade with $1\frac{5}{8}$ -inch cutting edge and $1\frac{7}{8}$ -inch leather belt punch blade with $1\frac{1}{4}$ -inch cutting edge. 4 inches long when closed.



No. 39 Heavy Duty Big Pocket Knife — Genuine Frontier bone stag handle. Made of Queen Steel. Will not rust or stain and because of our secret tempering process, it will stay sharp far longer than other knives. Nickel Silver double bolsters, brass linings. Pocket blade 4 inches in length, saber ground, with $3\frac{3}{4}$ -inch cutting edge. Skinning blade 4 inches in length, flat ground with $3\frac{3}{4}$ -inch cutting edge. $5\frac{1}{4}$ inches overall when closed. One of our best selling numbers.

All Queen Pocket Knives have their individual pattern number etched on the blade. A very helpful service for the dealer.



No. 42 Small Two Blade Serpentine Pattern — Amber handle. Made of Queen Steel. Will not rust or stain and because of our secret tempering process, it will stay sharp far longer than other knives. Nickel Silver double bolsters, brass linings. 2-inch clip blade with $1\frac{7}{8}$ -inch cutting edge and $1\frac{1}{4}$ -inch pen blade with $1\frac{1}{8}$ -inch cutting edge. $2\frac{5}{8}$ inches long when closed. An outstanding number.

No. 43 — Same as above except with Genuine Frontier bone stag handle. One of our best selling numbers.

No. 59 — Same as above except with Genuine Mother of Pearl handle.



No. 44 Heavy Duty Big Pocket Knife — Genuine Frontier bone stag handle. Made of Queen Steel. Will not rust or stain and because of our secret tempering process, it will stay sharp far longer than other knives. Nickel Silver double bolsters, brass linings. Large clip blade 4 inches long, saber ground with $3\frac{3}{4}$ -inch cutting edge. $5\frac{1}{4}$ inches overall when closed.



No. 45 Big Chief Pocket Knife — Aluminum handle. Made of Queen Steel. Will not rust or stain and because of our secret tempering process, it will stay sharp far longer than other knives. Single blade $3\frac{3}{4}$ inches long with $3\frac{1}{2}$ -inch cutting edge. Overall size 5 inches long. Patented construction. Extra strong spring.



No. 46 Folding Fishing Knife — complete with disgorger and scaler. The disgorger is magnetized so you can pick up hooks with it and it has a sharpening stone on the side of the handle for sharpening hooks and for straightening hooks there is a hole in the bolster. Genuine Frontier bone stag handle. Made of Queen Steel. Will not rust or stain and because of our secret tempering process, it will stay sharp far longer than other knives. Nickel Silver double bolsters, brass linings. Clip blade $3\frac{3}{4}$ inches long with $3\frac{1}{16}$ -inch cutting edge. Disgorger, scaler and bottle opener blade $3\frac{1}{16}$ inches long. Overall size 5 inches long.

All Queen Pocket Knives have their individual pattern number etched on the blade. A very helpful service for the dealer.



No. 47 Balloon Pattern — Two Blade Pen Knife. Genuine Frontier Bone stag handle. Made of Queen Steel. Will not rust or stain and because of our secret tempering process, it will stay sharp far longer than other knives. Nickel Silver double bolsters, brass linings. Clip blade $2\frac{3}{8}$ inches long with $2\frac{1}{8}$ -inch cutting edge and pen blade $2\frac{5}{8}$ inches long with $1\frac{3}{8}$ -inch cutting edge. $3\frac{1}{2}$ inches overall.

No. 38 — Similar to above with one spear point blade, cutting edge $1\frac{1}{8}$ inches long. One pen blade, cutting edge $1\frac{1}{8}$ inches long. 3 inches overall when closed.



No. 48 Balloon Pattern — Carpenters Knife, three blade. Genuine Frontier bone stag handle. Made of Queen Steel. Will not rust or stain and because of our secret tempering process, it will stay sharp far longer than other knives. Nickel Silver double bolsters, brass linings. Clip blade $2\frac{3}{8}$ inches long with $2\frac{1}{8}$ -inch cutting edge, pen blade $2\frac{5}{8}$ inches long with $1\frac{3}{8}$ -inch cutting edge and carving blade $1\frac{5}{8}$ inches long with $1\frac{1}{8}$ -inch cutting edge. $3\frac{1}{2}$ inches overall.

Queen Steel



No. 49 Three Blade Texas Cattle Knife — Genuine bone stag handle. Made of Queen Steel. Will not rust or stain and because of our secret tempering process it will stay sharp far longer than other knives. Nickel Silver double bolsters, brass linings. Large clip blade size $3\frac{1}{4}$ -inch with $2\frac{7}{8}$ -inch cutting edge; spey blade $2\frac{1}{4}$ -inch with $1\frac{7}{8}$ -inch cutting edge and sheepfoot blade $2\frac{1}{16}$ -inch with $2\frac{1}{8}$ -inch cutting edge. $4\frac{1}{4}$ inches overall. Glazed finish to blades.



No. 51 Dogleg Pattern — Medium size two blade Jack Knife. Genuine Frontier bone stag handle. Made of Queen Steel. Will not rust or stain and because of our secret tempering process, it will stay sharp far longer than other knives. Nickel Silver double bolsters, brass linings. $2\frac{3}{4}$ inch clip blade with $2\frac{1}{2}$ inch cutting edge and $1\frac{7}{8}$ inch pen blade with $1\frac{5}{8}$ inch cutting edge. $3\frac{1}{2}$ inches long when closed. One of our best selling numbers.

All Queen Pocket Knives have their individual pattern number etched on the blade. A very helpful service for the dealer.



No. 52 Serpentine Pattern — Heavy duty two blade Trappers Knife. One blade at each end. Genuine Frontier bone stag handle. Made of Queen Steel. Will not rust or stain and because of our secret tempering process, it will stay sharp far longer than other knives. Nickel Silver Double Bolster Brass Linings. Large clip blade $3\frac{1}{4}$ inches long with 3 inch cutting edge and large spey blade $3\frac{1}{4}$ inches long with 3 inch cutting edge. $4\frac{1}{4}$ inches long when closed.



No. 56 Balloon Pattern — Two blade Jack Knife. Genuine Frontier bone stag handle. Made of Queen Steel. Will not rust or stain and because of our secret tempering process, it will stay sharp far longer than other knives. Nickel Silver double bolsters, brass linings. One large clip blade $2\frac{3}{4}$ -inches long with $2\frac{1}{2}$ -inch cutting edge. One pen blade $1\frac{3}{4}$ -inches long with $1\frac{1}{2}$ -inch cutting edge. The knife is $3\frac{1}{2}$ inches overall when closed.

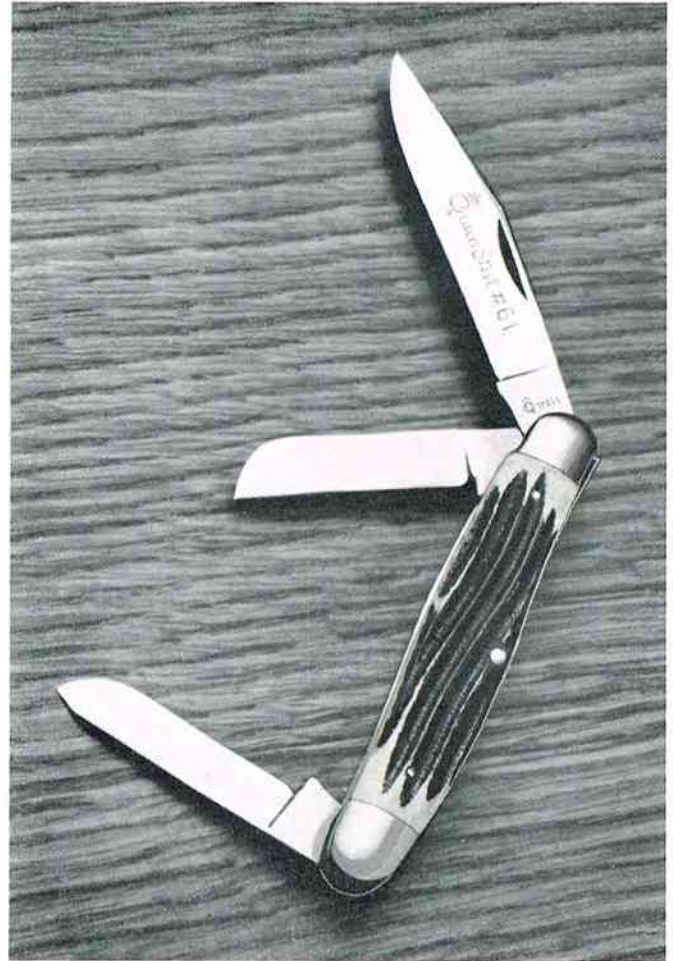
No. 58 — Same as above except with Spear point blade instead of Clip blade. (See No. 18 for an illustration of Spear point blade.)

Queen Steel



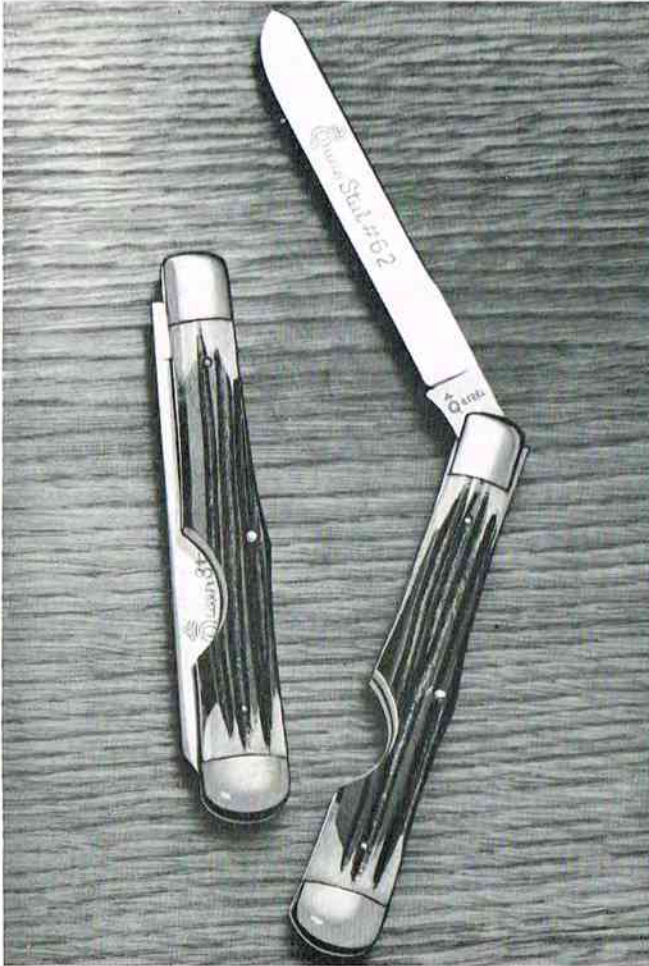
No. 60 One Blade Barlow Knife — Genuine Frontier Bone stag handle. Made of Queen Steel. Will not rust or stain and because of our secret tempering process, it will stay sharp far longer than other knives. One large clip blade 2½-inches long with 2¼-inch cutting edge.

No. 60-SH — Same as above except with Sheep-foot blade instead of Clip blade.

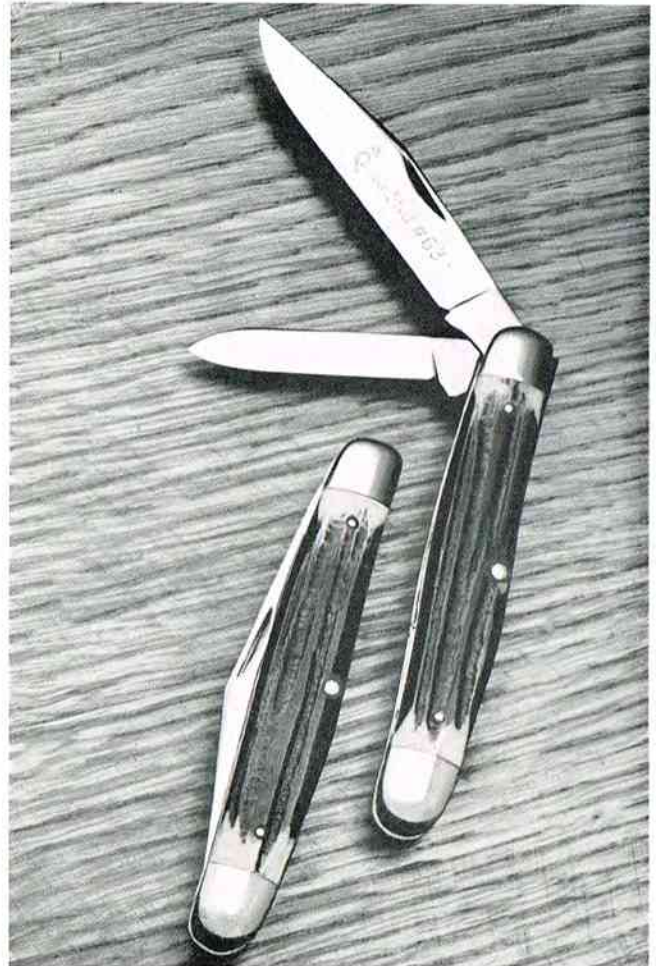


No. 61 — Stockman's Pattern — Three Blade Serpentine medium size stockman's knife. Genuine Frontier bone stag handle. Made of Queen Steel. Will not rust or stain and because of our secret tempering process, it will stay sharp far longer than other knives. Nickel silver double bolsters, brass linings. Clip blade 2¾ inches long with 2¾-inch cutting edge, sheepfoot blade 1-13/16 inches long with 1⅝-inch cutting edge, Spey blade 1⅝ inches long, 3⅝ inches overall when closed.

All Queen Pocket Knives have their individual pattern number etched on the blade. A very helpful service for the dealer.



No. 62 Easy Opener Pattern — Genuine Frontier bone stag handle. Made of Queen Steel. Will not rust or stain and because of our secret tempering process, it will stay sharp far longer than other knives. Double nickel silver bolsters. Brass linings. One large spey blade, cutting edge 4 inches long. $5\frac{1}{4}$ inches overall when closed. Designed for skinning and castrating. Glazed finish on blades.



No. 63 Serpentine Pattern — Two blade jack knife. Genuine Frontier bone stag handle. Made of Queen Steel. Will not rust or stain and because of our secret tempering process, it will stay sharp far longer than other knives. Double nickel silver bolsters. Brass linings. One long clip blade $2\frac{3}{4}$ inches long, one pen blade $1\frac{3}{4}$ inches long. Overall length when closed 4 inches.



No. 232—7-inch Solid Steel Pinking Shear — Queen Pinking Shears are a delicately adjusted precision instrument, designed by cutlery craftsmen, to give the utmost satisfaction and wear. Great care has been given to assure easy, effortless performance and durability, and Queen Pinking Shears will pink a wider variety of fabrics than other pinking shears.

No. 233 — 8-inch Solid Steel Pinking Shear— same as above except 8 inches in length.





Scissors and Shears

Queen line of scissors and shears are the very finest from the viewpoint of materials and workmanship. Full nickel finish. They are made of electric furnace hot forged steel. Tempered and Rockwell tested to our high standards. They all hold a keen cutting edge. Perfectly balanced. Each pattern bears its own individual pattern number for easy identification.

Reading from left to right top row:

- #234... 7 inch bent trimmer shear
- #227... 5 inch light trimmer embroidery shear
- #221... 7 inch straight heavy trimmer household shear
- #229... 4 inch pocket scissors
- #228... 4 inch embroidery scissors
- #220... 8 inch bent trimmer dressmaker shear

Reading from left to right bottom row:

- #222... 8 inch straight heavy trimmer household shear
- #226... 6 inch embroidery scissors
- #223... 6 inch light trimmer dressmaker shear
- #224... 7 inch light trimmer household shear
- #219... 7 1/2 inch professional barber shear
- #225... 8 inch light trimmer dressmaker shear



S-8



B-7



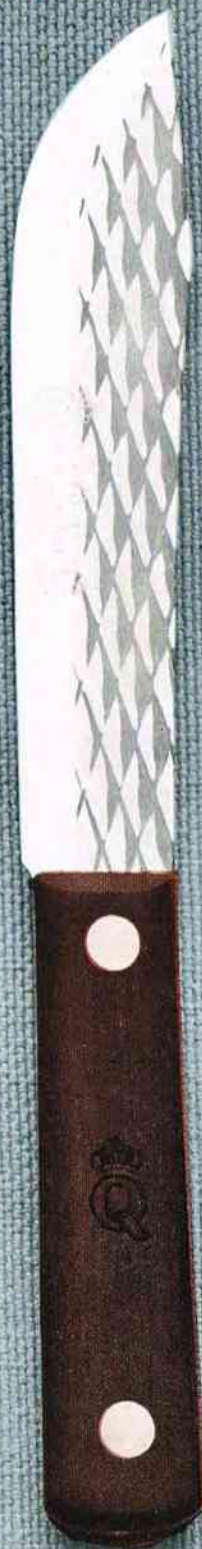
FL-6



BO-4



P-3



B-6



S-2



Hand Hammered Rough Finish Kitchen Line

Ground out of whole stock high carbon steel. Full tang. Rosewood handles. Very strong rivets. We especially make these knives for heavy duty and we recommend them to you as excellent value. By far the best selling line of kitchen knives. Reading from left to right they are as follows:

No. S-8 Slicing Knife	8 inch blade
No. B-7 Butcher Knife	7 inch blade
No. FL-6 Fillet Knife	6 1/2 inch blade
No. BO-4 Boning Knife	4 inch blade
No. P-3 Paring Knife	3 inch blade
No. B-6 Butcher Knife	6 inch blade
No. S-2 Utility Knife	4 inch blade
No. BO-6 Boning Knife	6 inch blade
No. P-4 Paring & Boning Knife	3 inch blade
No. B-8 Butcher Knife	8 inch blade



BO-6

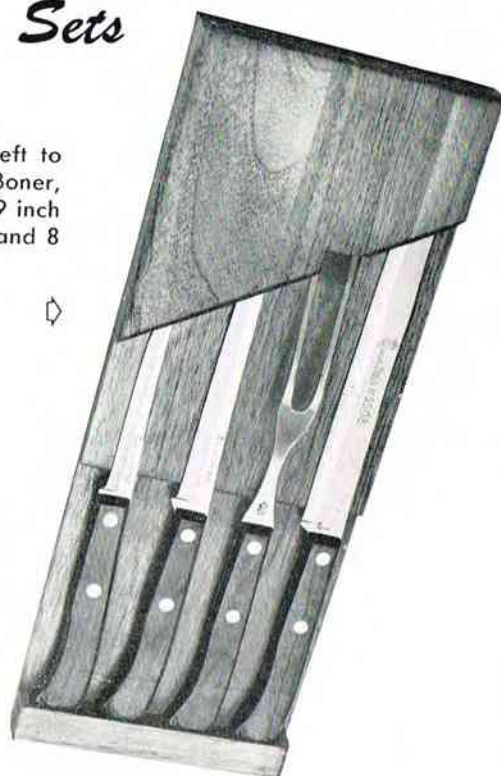
P-4

B-8

No. 500 Hollow Ground Holster Sets



No. HG4 — Left to right: 4 inch Boner, 6 inch Boner, 9 inch Carving Fork, and 8 inch Slicer.



No. HG5 — Left to right: 4 inch Boner, 6 inch Boner, 9 inch Carving Fork, 7 inch Carver and 8 inch Slicer.



No. HG6 — Left to right: 4 inch Boner, 9 inch Carving Fork, 6 inch Boner, 7 inch Carver, 8 inch Carver and 8 inch Slicer.

Each of the above 500 Holster Sets are made of fine Basswood Birch Finish. All blades are made of the finest Queen Steel, Hollow Ground. Finest Formica Handles. These Sets may be laid flat in a drawer or hung on a wall. Individually packed.

Queen Steel *No. 500 Hollow Ground Line*

The Queen Steel used in these knives is the finest in the world. It is especially made to conform with our rigid specifications and will not rust or stain. Because of our secret tempering process, these knives will stay sharp far

longer than other knives. Formica handles are impervious to heat, fire, water and will give very long life. Beautifully designed and scientifically balanced. Hollow ground. Reading from top to bottom they are as follows:

No. B508 — 8-Inch Carver

No. B507 — 7-Inch Carver

No. F503 — 3-Inch Parer

No. B0504 — 4-Inch Boner

No. B506 — 6-Inch Carver

No. S508 — 8-Inch Slicer





S-410

B-406

B-407

FC-400

BK-409

B-408

S-401

CK-409

U-401

Queen Steel

Formica Line

The Queen Steel used in these knives is the finest in the world. It is especially made to conform with our rigid specifications and will not rust or stain. Because of our secret tempering process, these knives will stay sharp far longer than other knives. New solid piece construction makes it impossible for any food particles to lodge in any part of these knives. Formica handles are impervious to heat, fire, water and will give very long life. Beautifully designed and scientifically balanced. Surgical grind. Reading from left to right they are as follows:



CF-411

BO-404

G-412

P-403

P-403sh

No. S-410 Ham & Roast Beef Slicer	10 inch blade
No. B-406 Carver	6 inch blade
No. B-407 Carver	7 inch blade
No. FC-400 French Cook Knife	8 inch blade
No. BK-409 Bread Knife, serrated edge	8 inch blade
No. B-408 Carver	8 inch blade
No. S-401 Slicer	8 inch blade
No. CK-409 Double Duty Spatula, Cake & Pie Knife, One edge serrated	5 $\frac{5}{8}$ inch blade
No. U-401 Steak Knife	4 $\frac{11}{16}$ inch blade
No. CF-411 Carving Fork	9 inch fork
No. BO-404 Boning Knife	4 inch blade
No. G-412 Grape Fruit Knife, both edges serrated	3 $\frac{5}{8}$ inch blade
No. P-403 Paring Knife	3 inch blade
No. P-403sh Paring Knife	2 $\frac{1}{4}$ inch blade

Queen Steel

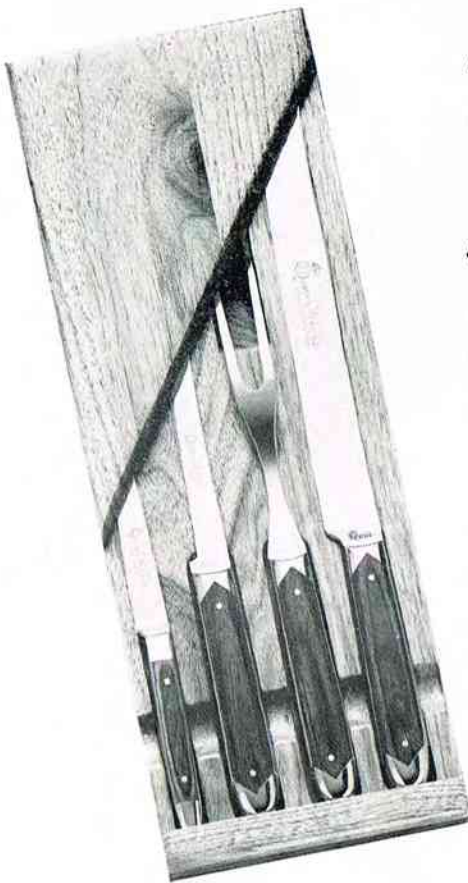


FORMICA STEAK SET

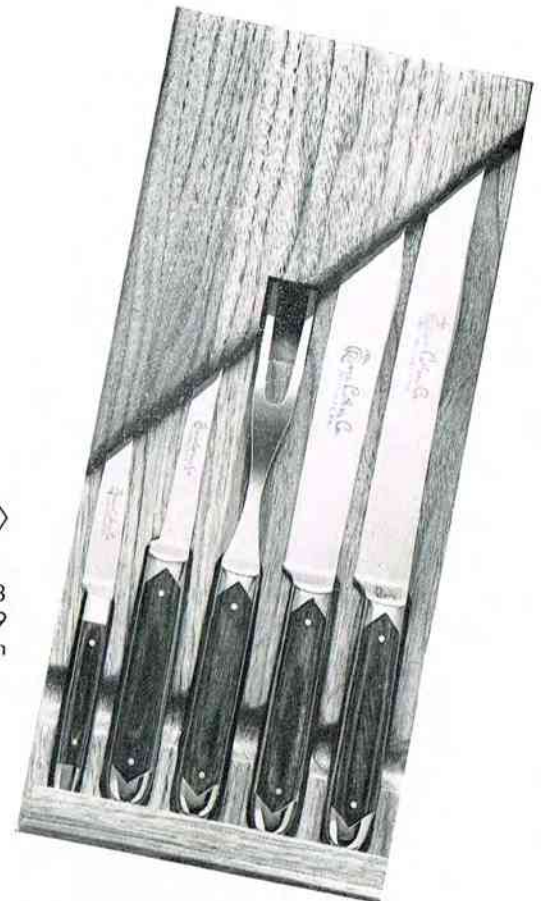
No. S406—6 Formica Steak Knives individually set in a beautiful solid walnut box, velveteen lined.

No. S408—Same as above, except contains 8 Formica Steak Knives.

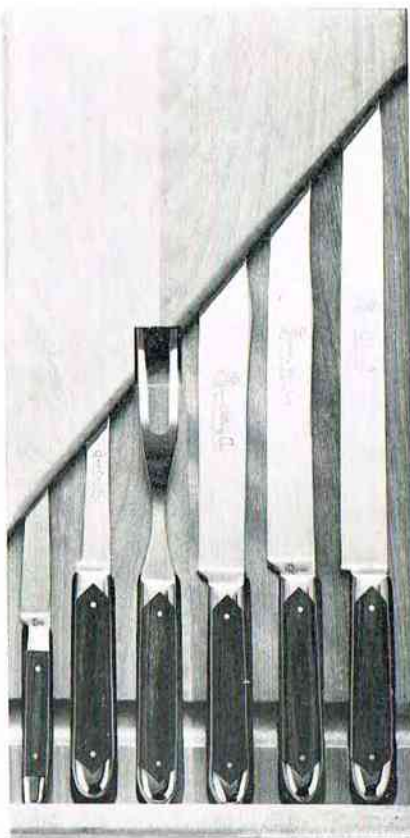
Formica Holster Sets



No. FH4C — Left to right: 3 inch Parer, 4 inch Boner, 9 inch Carving Fork and 8 inch Slicer.



No. FH5A — Left to right: 3 inch Parer, 4 inch Boner, 9 inch Carving Fork, 7 inch Carver and 8 inch Slicer.



No. FH6D — Left to right: 3 inch Parer, 4 inch Boner, 9 inch Carving Fork, 8 inch Slicer, 8 inch Bread Knife and 10 inch Slicer.

Each of the above Formica Holster Sets are made of fine Basswood, Birch finish. They may be laid flat in a drawer or hung on a wall. Individually packed.



S-300



SS-300



CF-300



SF-101



H-300



U-101

Queen Steel

De Luxe Matched Table Line

We consider this line our finest creation. The Queen Steel used in these knives is the finest in the world. It is especially made to conform with our rigid specifications. Will not rust or stain and because of our secret tempering process, they will stay sharp far longer than other knives. Solid piece construction makes it impossible for any food particles to lodge in any part of the knives. The Genuine Frontier Bone Stag handles mean eternal handle life and best of all hand washing will not mar or dull the appearance of these handles but rather they improve with age. Scientifically designed and balanced to fit comfortably in the hand they make carving and eating a more delightful pleasure. Reading from left to right they are as follows:

No. S-300 Slicer	10 inch blade
No. SS-300 Sharpening Steel	12 1/2 inch steel
No. CF-300 Carving Fork	10 1/2 inch fork
No. SF-101 Matching 4 Tine Steak Fork	9 inch fork
No. H-300 Steak Carver	6 3/4 inch blade
No. U-101 Individual Steak Knife	4 11/16 inch blade
No. P-300sh Paring Knife	2 1/4 inch blade
No. C-300 Carver	9 inch blade
No. P-300 Paring Knife	3 inch blade



Queen Steel



No. 5102 "Steak Duet"—
Two De Luxe Steak Knives in
attractive gift box.



No. C5502 De Luxe Carver and Slicer Set — 9 inch De Luxe Carver and 10 inch De Luxe Slicer in
attractive gift box.



No. C-603 3 Piece De Luxe Carving Set — 9 inch De Luxe Carver, matching De Luxe Carving Fork and matching De Luxe Carving Steel. Individually set in attractive lined gift box.

No. C-602—Same as above, except two piece De Luxe Carving set containing 9 inch De Luxe Carver and matching De Luxe Carving Fork.

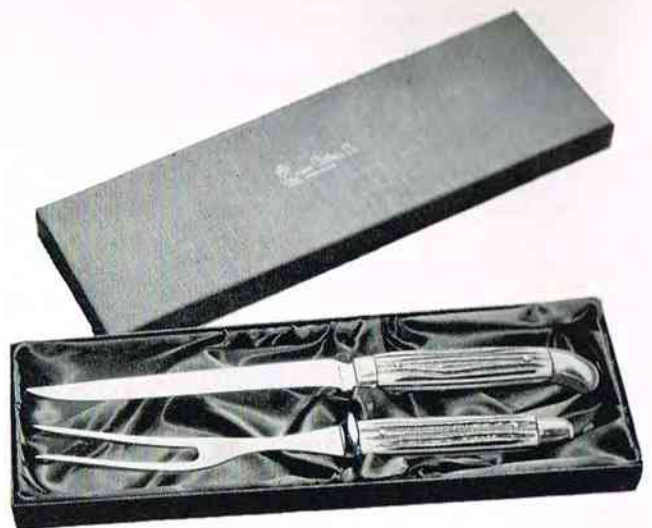
No. S-606 De Luxe Steak Set — Six De Luxe Steak Knives individually set in attractive lined gift box. ➡

No. S604—Same as above, except contains four De Luxe Steak Knives.

No. S-608—Same as above, except contains eight De Luxe Steak Knives.



No. S602 2 Piece De Luxe Steak Carving Set—De Luxe Carving Fork and De Luxe Steak Carver. Individually set in attractive gift box lined with sateen.



No. C702 2 piece De Luxe Carving Set—9 inch Carver and matching De Luxe Carving Fork individually set in beautiful solid walnut case lined with velveteen.

No. C703 3 piece De Luxe Carving Set—9 inch De Luxe Carver, matching De Luxe Carving Fork and matching De Luxe Sharpening Steel individually set in beautiful walnut case lined with velveteen.





No. C703S 3 piece De Luxe Carving Set—9 inch De Luxe Carver, 10 inch De Luxe Slicer and matching De Luxe Carving Fork individually set in beautiful solid walnut case lined with velveteen.

No. C704 4 piece De Luxe Carving Set—9 inch De Luxe Carver, 10 inch De Luxe Slicer, matching De Luxe Carving Fork and matching De Luxe Sharpening Steel individually set in beautiful solid walnut case lined with velveteen.



S-702 De Luxe Steak Carving Set—De Luxe Carving Fork and De Luxe Steak Carver individually set in beautiful solid walnut chest lined with velveteen.

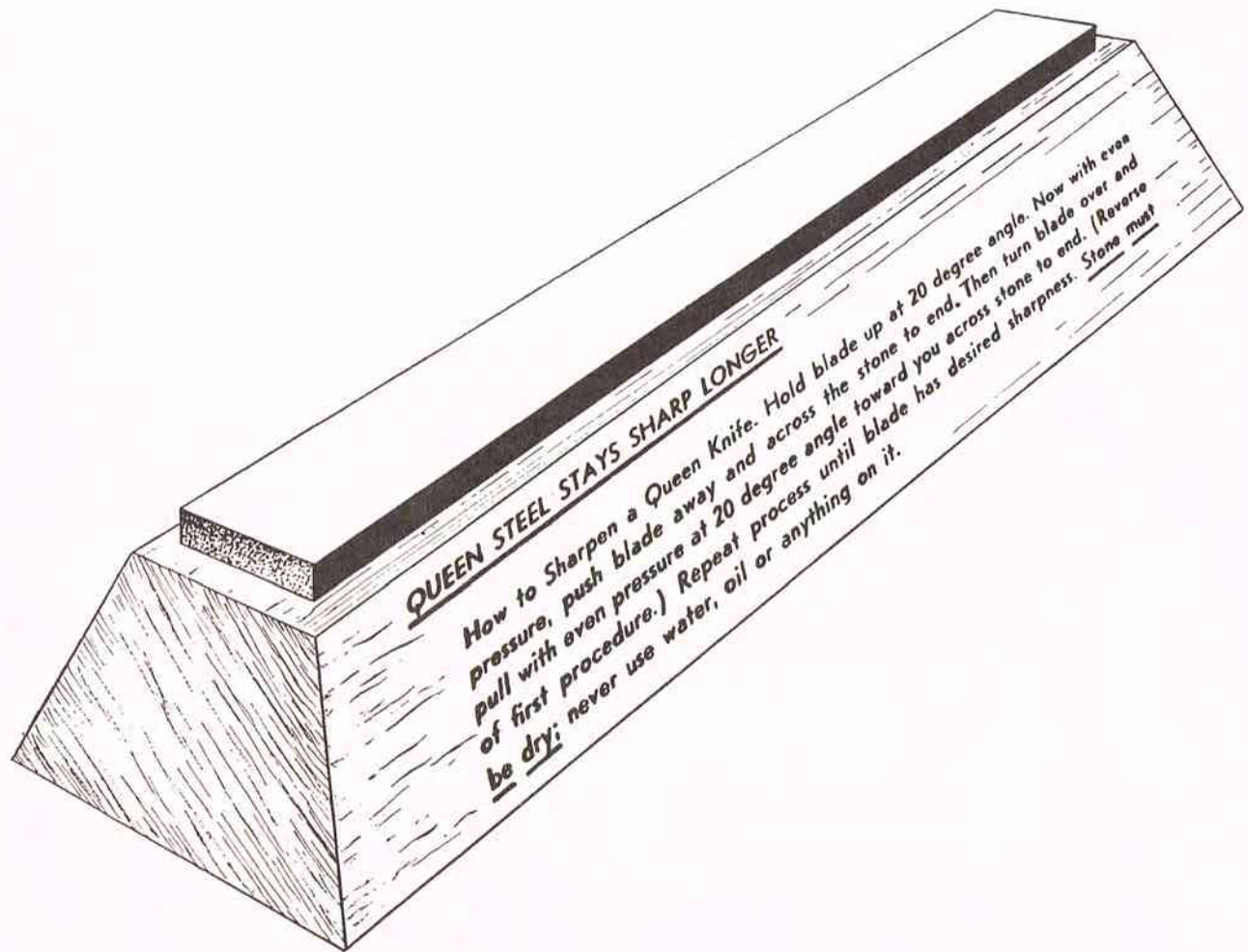
Queen Steel



No. S108 De Luxe Steak Set — Eight De Luxe Steak Knives individually set in a beautiful solid walnut case lined with velveteen.

No. S106 — Same as above except contains 6 De Luxe Steak Knives.

How to sharpen a Queen Knife



These Special Sharpening Stones are made of the same stone we use in the factory to sharpen our knives. No other stone or steel will sharpen our knives properly. We sell these stones only to our authorized dealers.

Factory: Titusville, Pa.



Queen Cutlery Company

10 COMMERCE COURT, NEWARK 2, N. J.

**PRICE LIST
AND
ORDER BLANK**

	Price per Doz.		Price per Doz.		Price per Doz.		Price per Set
HUNTING & FISHING		Doz. 18	19.20	Doz. 223	22.20	KITCHEN LINE SETS	
Doz. 73	\$17.40	Doz. 19	30.00	Doz. 224	24.60	Sets HF3	\$ 3.00
Doz. 74	18.00	Doz. 19A	30.00	Doz. 225	27.00	Sets S-624	3.30
Doz. 75	36.00	Doz. 20	21.00	Doz. 226	18.00	Sets S-626	4.80
Doz. 76	19.80	Doz. 21	18.00	Doz. 227	16.80	FORMICA SETS	
Doz. 77	30.00	Doz. 22	15.00	Doz. 228	16.20	Sets S406	\$10.00
Doz. 78	86.40	Doz. 23	15.00	Doz. 229	15.60	Sets S408	12.00
Doz. 79	18.00	Doz. 24	23.40	Doz. 232	57.00	Sets FKR404	10.00
Doz. 80	48.00	Doz. 25	15.00	Doz. 233	64.80	Sets C502	4.00
Doz. 81	48.00	Doz. 26	27.00	Doz. 234	25.20	Sets F604	5.60
Doz. 82	27.00	Doz. 26A	27.00	KITCHEN LINE		Sets F606	8.00
Doz. 83	27.00	Doz. 27	15.00	Doz. FL6	\$12.00	Sets F608	10.30
Doz. 84	27.00	Doz. 28	24.00	Doz. BO-4	9.80	Sets FH5A	9.00
Doz. 85	16.80	Doz. 29	24.00	Doz. B-6	12.00	Sets FH4C	7.00
Doz. 86	16.80	Doz. 30	23.40	Doz. B-7	13.80	Sets FH6D	11.00
Doz. 89	22.80	Doz. 31	22.20	Doz. B-8	15.00	Sets F300	4.00
Doz. 90	22.80	Doz. 32	33.00	Doz. BO-6	12.00	Sets HG4	8.00
Doz. 91	16.80	Doz. 33	30.00	Doz. S-8	15.00	Sets HG5	10.00
Doz. 95	30.00	Doz. 34	25.20	Doz. P-3	6.00	Sets HG6	12.00
Doz. 96	19.20	Doz. 35	25.20	Doz. P-4	8.00	DELUXE SETS	
Doz. 98	25.80	Doz. 36	36.00	Doz. S-2	8.00	Sets S102	\$ 2.55
KNIFE, AXE & SHEATHS		Doz. 37	30.00	FORMICA LINE		Sets S106	10.00
Doz. SBA78	\$40.20	Doz. 38	18.00	Doz. S401	\$18.00	Sets S108	13.00
Doz. DBA79	48.00	Doz. 39	39.00	Doz. BO404	15.00	Sets SCF118	15.60
Doz. KA-79	73.80	Doz. 41	16.20	Doz. B408	18.00	Sets CS502	4.40
Doz. SBA80	36.00	Doz. 42	18.00	Doz. B407	16.20	Sets CSS503	5.75
Doz. KA-80	63.00	Doz. 43	18.00	Doz. B406	15.00	Sets S602	4.00
Doz. PKS	7.80	Doz. 44	33.00	Doz. P403	9.00	Sets C602	4.50
POCKET AND PEN		Doz. 45	11.40	Doz. P403sh	9.00	Sets C603	6.50
Doz. 1	\$19.80	Doz. 46	33.00	Doz. U401	14.40	Sets S604	5.60
Doz. 2	19.80	Doz. 47	19.80	Doz. S410	21.00	Sets S606	8.00
Doz. 2A	19.80	Doz. 48	30.00	Doz. CF411	16.20	Sets S608	10.30
Doz. 3	18.00	Doz. 49	39.00	Doz. BK409	19.20	Sets S702	6.50
Doz. 4	30.00	Doz. 51	19.80	Doz. G412	8.00	Sets C702	7.00
Doz. 5	18.00	Doz. 52	30.00	Doz. CK409	13.20	Sets C703	10.00
Doz. 6	25.20	Doz. 53	21.60	Doz. F503	9.00	Sets C703S	10.00
Doz. 7	18.00	Doz. 54	34.20	Doz. BO504	15.00	Sets C704	12.00
Doz. 8	27.00	Doz. 55	18.00	Doz. B506	15.00	KITCHEN SET	
Doz. 9	30.00	Doz. 56	19.80	Doz. B507	16.20	Sets 7KF	\$ 7.75
Doz. 9A	30.00	Doz. 57	43.20	Doz. B508	18.00	Sets 5KF	6.00
Doz. 10	19.80	Doz. 58	19.80	Doz. S508	18.00	BARBECUE SET	
Doz. 11	16.20	Doz. 59	26.40	Doz. CF500	16.20	Sets 3BS	\$ 4.50
Doz. 11EO	16.50	Doz. 60SH	10.20	Doz. BO506	16.20	SHARPENING STONE	
Doz. 12	16.20	Doz. 61	30.00	DELUXE LINE		Each	\$ 1.00
Doz. 13	16.20	Doz. 62	24.00	Doz. U101	\$14.40	NUMBERS NOT LISTED	
Doz. 14	19.20	Doz. 63	22.80	Doz. C300	24.00	Doz.	
Doz. 14P	30.00	SCISSORS AND SHEARS		Doz. S300	24.00	Doz.	
Doz. 15	18.00	Doz. 218	\$27.60	Doz. H300	18.00		
Doz. 16	27.00	Doz. 219	21.60	Doz. P300	9.00		
Doz. 16A	27.00	Doz. 220	27.60	Doz. CF300	24.00		
Doz. 17	19.20	Doz. 221	24.60	Doz. SS300	24.00		
		Doz. 222	25.80				

Purchaser's Signature _____

Date _____

Bill to _____

Ship to _____

Terms 1 % 10 days, net 30 days. FOB Factory.

Salesman _____

1-4-60

(OVER)