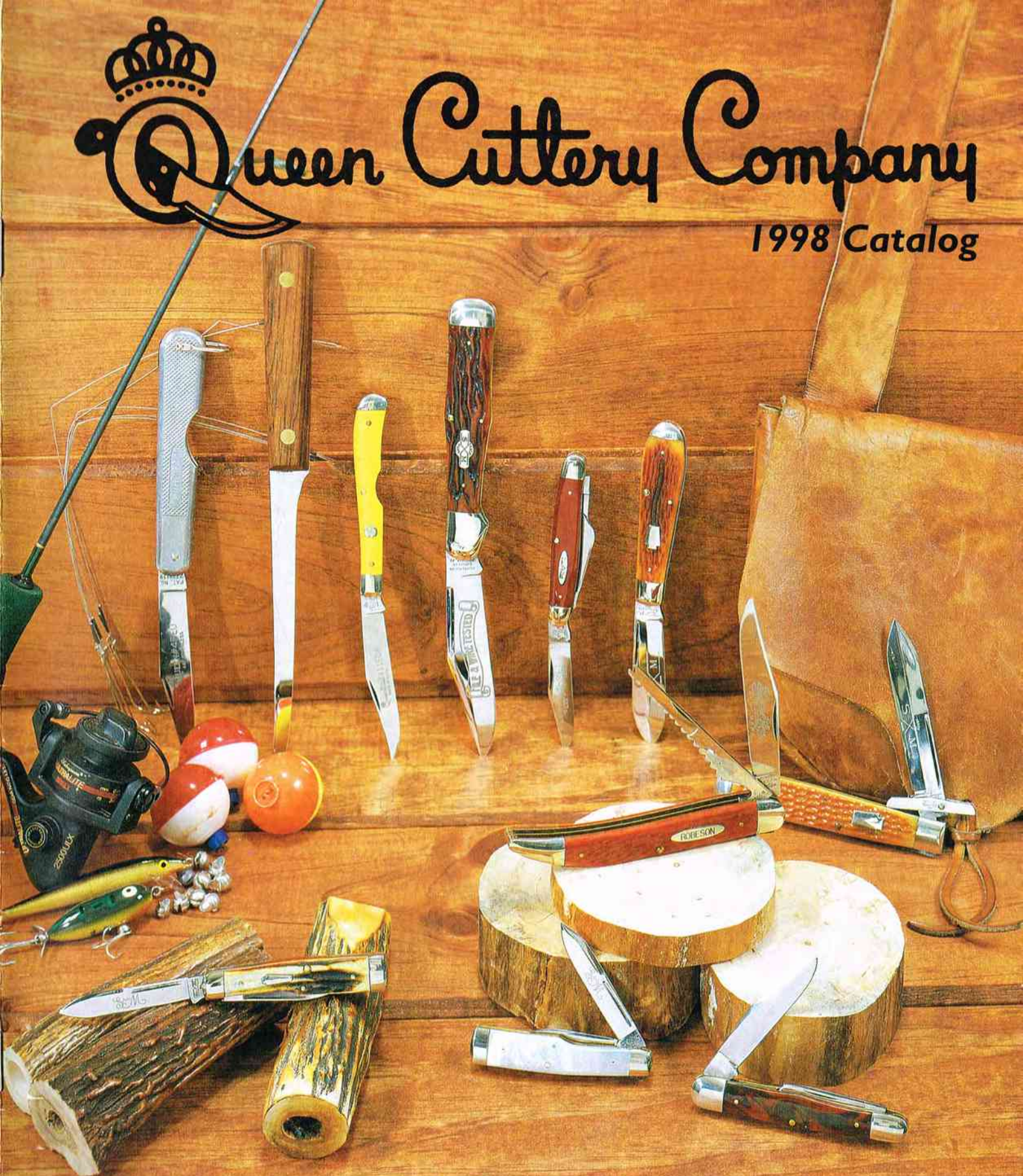


# Queen Cuttery Company

## 1998 Catalog



### Sales Office:

P.O. Box 500  
26 Empire Street  
Franklinville, NY 14737

### Factory:

P.O. Box 367  
507 Chestnut Street  
Titusville, PA 16354

### Phone / Fax:

716-676-5527  
Fax 716-676-5535  
800-222-5233

### Online:

website: [www.dotc.com/OKC](http://www.dotc.com/OKC)  
email: [salesOKC@aol.com](mailto:salesOKC@aol.com)

Copyright © 1998  
Queen Cutlery Co., Inc.



# Queen Cuttery Company



Queen Cutlery is located in Titusville, Pennsylvania, about two hours Northeast of Pittsburgh, Pa. All Queen products are made at the Titusville factory. Most other functions - sales, customer service, accounting, etc. - are located at the Ontario Knife factory in Franklinville, NY - about two hours away.

Queen's roots go back to the Schatt and Morgan Cutlery Company, which was founded in Gowanda, NY in 1890 and moved to Titusville in 1895. Queen is still housed in the original Schatt and Morgan Factory and many of the delicate hand processes and operations employed by Schatt and Morgan are still being used by Queen. Skilled craftsmen are essential to build a "factory knife" by hand, and while this doesn't lead to mass production or extremely low prices, the results are beautiful, functional knives. The awards listed on the following page are testaments to the skill of the Queen craftsmen.

## Table of Contents

File and Wire Tested .....	4	Amber Collection .....	11
Schatt & Morgan Series VIII .....	4,5	Chipped Bark .....	12
Red Winterbottom Bone .....	6	Button Locks / Hunters / Fillet .....	13
Queen Pearls .....	7	Rawhide Series .....	14
Executive Series .....	8	Aluminum / Stainless .....	14
Robeson .....	9	Country Cousins / Folders .....	15
Painted Crown Red .....	10	Sharpeners .....	Back Cover

## WARRANTY

LIMITED LIFETIME WARRANTY GUARANTEES PRODUCTS TO BE FREE FROM FACTORY DEFECTS. ANY QUEEN CUTLERY COMPANY PRODUCT FOUND TO BE DEFECTIVE IN ITS MATERIAL DESIGN OR WORKMANSHIP WILL BE REPAIRED OR REPLACED FREE OF CHARGE ... WITH THE SAME ITEM OR ONE OF EQUAL VALUE. (NOTE: THIS EXCLUDES PRODUCTS SUBJECTED TO ABUSE, MISUSE OR NEGLECT.)





Blade Magazine - Manufacturer's Awards - Voting by manufacturers

- 1990 - Best Buy of the Year (83A Jumbo)
- 1991 - Excellence in Manufacturing Quality - Entire product line
- 1994 - Publisher's Award - Special Recognition - Schatt & Morgan and Robeson
- 1996 - Investor/Collector Knife of the Year - Schatt & Morgans
- 1997 - Best Buy of the Year

American Blade Collectors Association (ABCA - now IBCA)

Club Knives - Voting by life members

- 1991 - Whittler - burnt stag handles
- 1992 - Schatt & Morgan Reverse Gunstock - burnt stag
- 1993 - Schatt & Morgan Swing Guard Lock - ebony handles
- 1994 - Schatt & Morgan Jumbo Lock - burnt stag handles
- 1995 - Robeson Moose - burnt stag handles

National Knife Collectors Association (NKCA)

Club Knives - Voting by NKCA Board & Youth Knife Committee

- 1992 - Club Knife with Sargent Co. - Trapper - brown bone handles
- 1994 - NKCA Youth Knife - Senator - Rogers bone
- 1995 - NKCA Youth Knife - Slim line Trapper - brown bone handles
- 1996 - NKCA Youth Knife - Schatt & Morgan Sleeveboard - brown bone handles

**If you agree with the most knowledgeable  
knife people in the world,  
you'll buy Queen knives!**



# File & Wire Tested

## Features:

- 5-1/4" Closed
- Queen Steel Blades
- Original File & Wire Tested Etching
- Nickel Silver Bolsters
- Brass Liners
- New Schatt & Morgan Shield
- Schatt & Morgan Gift Box

## Pattern: 041883

Queen Cutlery is proud to introduce its inaugural File and Wire Tested Knife. This Folding Hunter handled in jigged burnt red bone will be offered for one year then be replaced with a new addition for 1999. File and Wire Tested is an old tempering process used by Schatt & Morgan before Rockwell hardness testing evolved.

## SCHATT & MORGAN POCKETKNIVES

The Schatt and Morgan Cutlery Company was founded in 1890. The company produced very high quality pocketknives until it was purchased by the Queen City Cutlery Company in 1932. Queen City changed it's name to the Queen Cutlery Company in 1947 and started making Queen Steel knives at about the same time. Queen Cutlery is still housed in the original Schatt and Morgan factory in Titusville, Pa.

Schatt and Morgan Series I pocket knives were introduced in 1991. At the beginning of the year the new series is started and the old series discontinued. The make up of each series has been:

- \* Series I - 1991 - Brown jigged bone, six knives, introductory year.
- \* Series II - 1992 - Deep red jigged bone, eight knives, two new patterns.
- \* Series III - 1993 - Winterbottom bone, six knives, two new, one revised pattern.
- \* Series IV - 1994 - Corncob bone, six knives, two new, two revised patterns.
- \* Series V - 1995 - Anniversary Series - burnt stag and pearl, five knives, one new pattern
- \* Series VI - 1996 - Emerald green bone and pearl, six knives, three new and one revised pattern.
- \* Series VII - 1997 - Deep blue bone and pearl, six knives, two new and one revised pattern.

Given the time and skill necessary to produce these beautiful, premium quality knives, production has been, and will be, limited to less than 1,000 pieces per year. The knives typically sell out in the summer.

### *The Schatt & Morgan Reproductions feature:*

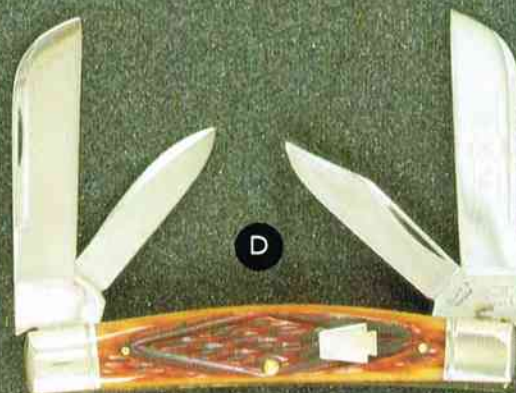
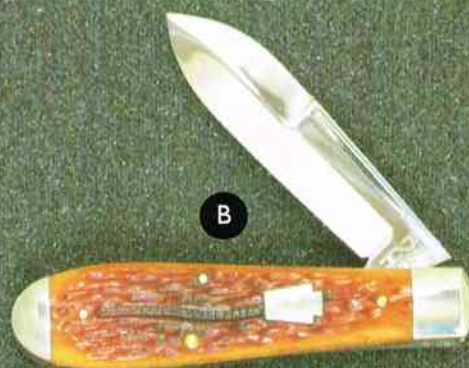
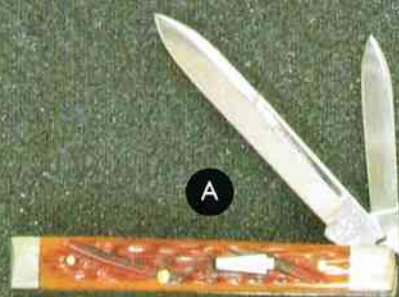
- \* Queen Steel blades, with traditional grinds.
- \* Year of manufacture tang stamped. All secondary blades tang stamped.
- \* Decorated nickel silver bolsters, brass liners.
- \* All shields pinned to handles.
- \* Attractive Schatt & Morgan gift boxes.



# SCHATT & MORGAN POCKETKNIFE SERIES VIII

## ANTIQUE CARAMEL WORM GROOVE BONE - BURNT STAG - PEARL

Featured below is Queen Cutlery's new Series VIII Schatt & Morgan collection. An Equal End Jack handled in worm groove bone and two small gunstocks handled in burnt stag and pearl have been added. Also the Tear Drop Jack has been modified to a one blade knife and the Congress Whittler is now four bladed, both being fitted with worm groove bone.



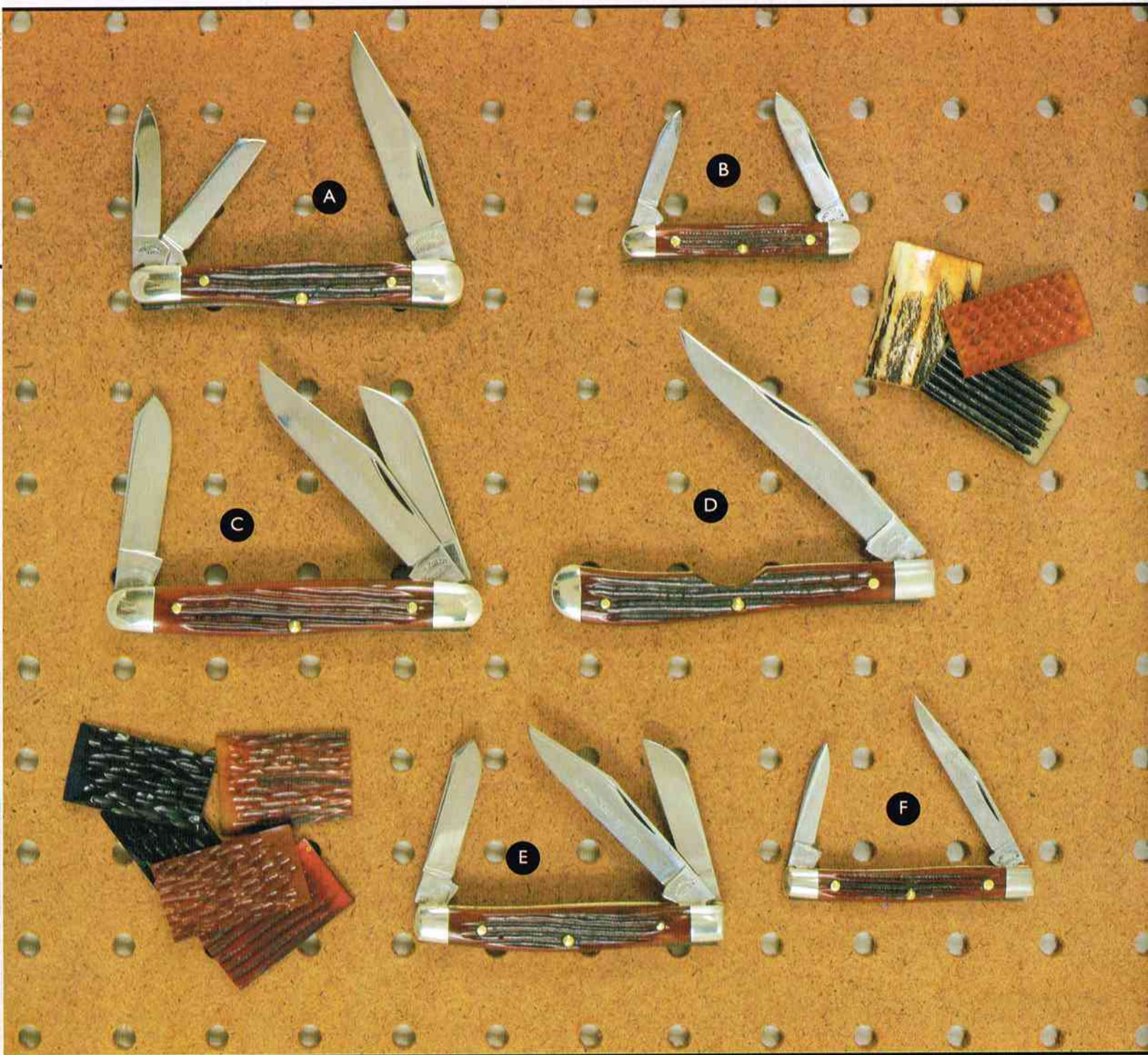
- A. 042266 Small Doctor's - 3-1/4" Closed
- B. 041906 Tear Drop Jack - 3-7/8" Closed
- C. 042176 Equal End Jack - 3-7/8" Closed
- D. 044431 Congress Whittler - 4" Closed

- E. 032236 Small Gunstock - 3" Closed
- F. 042146 Wharnclyff Whittler - 3-1/8" Closed
- G. 052236 Small Gunstock - 3" Closed



# Red Winterbottom Bone

These six new additions to the Queen line feature a Winterbottom jigging pattern dyed to a finished rich red color. Queen City and Winterbottom Bone were synonymous in manufacturing high quality bone handled pocket knives back in the late 1950's - early 60's, before the introduction of delrin materials. Queen Cutlery has gone back to its roots in presenting these Red Winterbottom Bone traditional pocketknives.



- A. 48B Whittler - 3-1/2" Closed  
B. 5RB Pen - 2-1/2" Closed  
C. 9RB Stockman - 4" Closed

- D. 11EOB Easy Opener - 4" Closed  
E. 26B Serpentine - 3-1/4" Closed  
F. 43B Gentlemen's - 2-5/8" Closed



# Queen Pearls

## Genuine Mother of Pearl

Queen Cutlery has been producing premium quality knives for many years and these four mini-pearls have been constructed to meet the highest standards in the knife industry in quality and beauty. Only the highest grade of genuine mother of pearl is used to handle these knives giving them a irredescent glow and multi-color look. Queen Cutlery hand picks the best pearl pieces which are cut from premium oyster shells located by professional divers in the South Pacific Ocean.

These four patterns feature:

- \* Queen Steel Blades
- \* Stainless Pins and Backsprings
- \* Brass Liners
- \* Nickel Silver Bolsters
- \* Individually Wrapped and Boxed

A. 59P 2 Blade Pocket - 2-5/8" Closed

B. 38P Small Balloon - 3" Closed

C. 6P Pen - 4-1/2" Closed

D. 14P Peanut - 2-3/4" Closed



# Executive Series

The handles on the Queen Executive Series are manufactured from a patterned brass designed exclusively for Queen Cutlery. These slim-line knives feature Queen Steel blades, stainless backsprings and brass pins. With an additional private label etch as an option, these patterns are great for advertising and promotional gifts.



- |          |                                |          |                            |
|----------|--------------------------------|----------|----------------------------|
| A. 209E  | Pen - 2-1/2" Closed            | D. 8445E | Small Lock - 2-7/8" Closed |
| B. 96E   | Small Doctor's - 3-5/8" Closed | E. 38E   | Balloon - 3" Closed        |
| C. 9180E | Gentlemen's - 2-5/8" Closed    |          |                            |



# ROBESON

*Shun Edge*  
TRADE MARK

## Strawberry Bone

The Robeson Cutlery Company was founded in 1879, by Millard Robeson. The company continued to manufacture knives until 1965 and continued to sell knives until 1971, when the cutlery business was purchased by The Ontario Knife Company, the sister company of Queen Cutlery. Robeson produced many handsome knives during it's long history, but the company was best known for beautiful red, handled knives made with Strawberry Bone.



- A. 612224 Daddy Barlow - 5" Closed  
B. 622061 Trapper - 4" Closed  
C. 632295 Serpentine - 3-1/4" Closed

- D. 622595 Muskrat - 4" Closed  
E. 622406 Fish Knife - 5" Closed  
F. 622751 Moose/Serpentine - 4-1/4" Closed



# Painted Crown Red

A delicate, time consuming process is followed to develop the deep, "royal" red handles on these beautiful knives. Each handle slab is shaped from a sheet of bright red acrylic. Then the back of each handle is painted a deep blue. The combination of the red acrylic and blue paint results in the royal, rich color of Painted Crown Red. Each knife includes a new, black painted shield and Queen Steel blades.



- A. PCR4
- B. PCR6
- C. PCR2

Swing Guard Lock - 4-1/2" Closed  
Cattle King - 4-1/4" Closed  
Doctor's Knife - 3-5/8" Closed

- D. PCR5
- E. PCR1
- F. PCR3

Stockman - 3-5/8" Closed  
Trapper - 4-1/8" Closed  
Whittler - 3-1/2" Closed





# Amber Collection

The rich appearance of the amber colored handles is improved with nickel silver shields pinned to the handles. All knives feature durable Delrin handles and Queen Steel brushed finish blades except the Jumbo 83A, which is made of carbon steel.



19-A - Trapper  
4 <sup>1</sup>/<sub>8</sub>" Closed



70A - Country Cousin  
3 <sup>5</sup>/<sub>8</sub>" Closed



13A - Utility  
4" Closed



85A - Game Bird  
3" Blade • 6 1/2" Overall  
(Sheath Included)



48A - Whittler  
3 1/2" Closed



11 EOA -  
Easy Opener  
4" Closed



9A - Stockman  
3" Closed



49A - Cattle King  
4 1/2" Closed



83A - Jumbo  
5 1/2" Closed



# Chipped Bark

The jigged handles on this popular line resemble the texture and color of tree bark and silver, cast nickel shields are pinned to the handles. Each knife includes Queen Steel brushed finish blades, Delrin handles, nickel silver bolsters, and brass liners. Most popular, traditional patterns are included in this series.



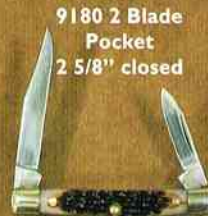
9160 Med.  
Stockman  
3 1/2" closed



9185 3 Blade  
Pocket  
2 5/8" closed



9110 3 Blade  
Jack  
3 1/4" closed



9180 2 Blade  
Pocket  
2 5/8" closed



9155 Small  
Trapper  
3 1/2" closed



9175  
Peanut  
2 3/4" closed



9105  
2 Blade Jack  
3 1/4" closed



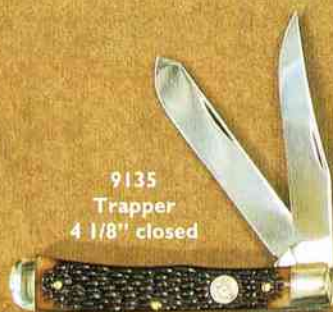
9120 Stockman  
4" closed



9125  
Muskrat  
4" closed



9165  
Copperhead  
3 3/4" closed



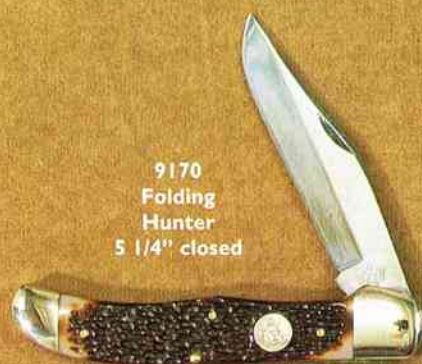
9135  
Trapper  
4 1/8" closed



9130  
Easy Opener  
4" closed



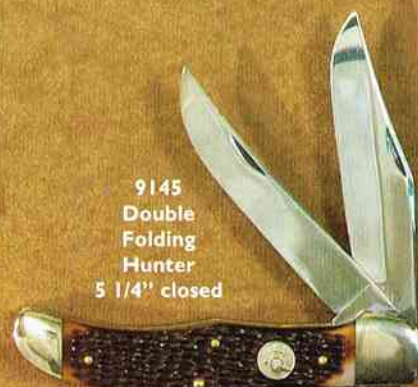
9115 Serpentine  
3 1/4" closed



9170  
Folding  
Hunter  
5 1/4" closed



9140  
Gunstock  
3 1/2" closed



9145  
Double  
Folding  
Hunter  
5 1/4" closed



# Button Locks/Hunters/Fillet

The lock releases by pushing a small button on the bolster - minimal pressure required. One of the easiest locking mechanisms available. Chipped Bark handles with cast nickel silver shields pinned to handles. Queen Steel blades.

410B - Button Lock  
 3-3/4" closed



Button  
 mechanism

44B - Button Lock  
 5-1/4" closed



Button  
 mechanism

85 - Game Bird  
 3" blade  
 6-1/4" overall



82 - Medium Hunter  
 4" blade  
 8-1/8" overall



95 - Big Game Hunter  
 5" blade  
 9-1/2" overall



Leather  
 Sheath



Hunting Knives -  
 sheaths included

Delrin handles -  
 Queen Steel blades

Leather Sheaths  
 3 sizes - also in black - see price list



76 - Panfish Fillet  
 Staminawood handles - sheath included



417 - Fillet Knife  
 Stainless blade - wood handles





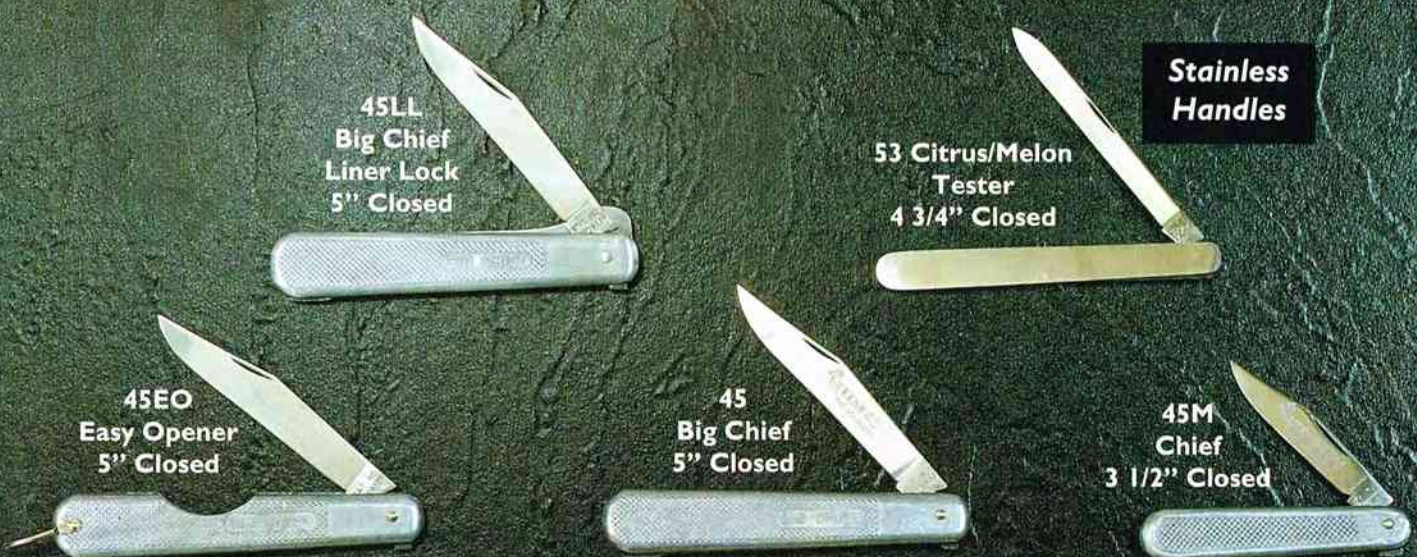
# Rawhide Series

Handsome, durable staminawood handles, with pinned nickel silver shields, are featured in the Rawhide Series. Staminawood offers the look and texture of fine natural wood with the strength of high impact plastic. Sheaths included with fixed blade hunters.



# Aluminum and Stainless

**BIG CHIEFS** - No rust and no corrosion with these popular knives made with aluminum handles and Queen Steel blades. Use in fresh or salt water. Keep one in the tackle box and carry one for general use. Available boxed or skin packed. 45LL features a liner lock for safety.







# Country Cousins/Folders

These popular working knives feature Queen Steel blades, Delrin handles, nickel silver bolsters and brass liners. Blades on the Country Cousins are brush finished and the barlows have aluminum frames.

**70A  
Country  
Cousin**  
3 5/8" Closed



**70R  
Country  
Cousin**  
3 5/8" Closed



**70  
Country  
Cousin**  
3 5/8" Closed



**22  
Barlow**  
3 1/2"  
Closed



**62EO  
Easy Opener**  
5 1/4" Closed



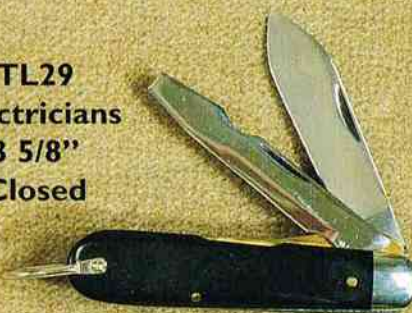
**25  
Barlow**  
3 1/2"  
Closed



**IW  
Hawkbill**  
4 1/8"  
Closed



**TL29  
Electricians**  
3 5/8"  
Closed



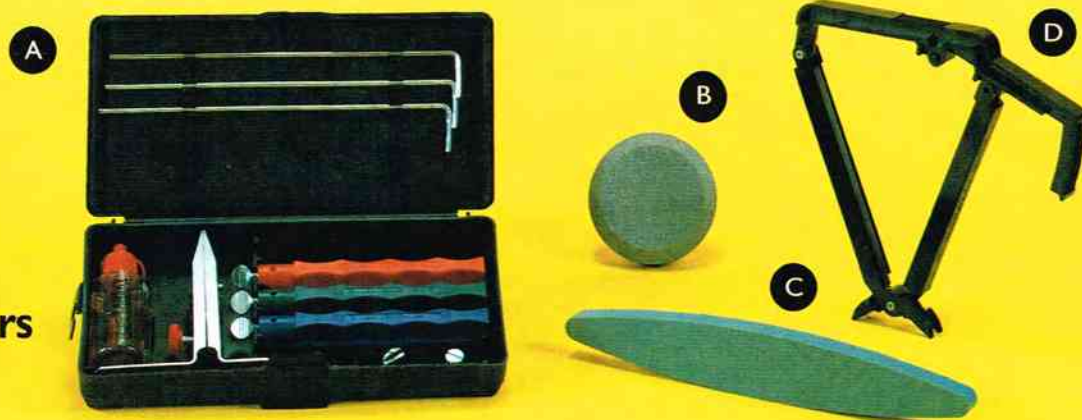


# Sharpening Implements



Item	Code No.	Item	Code No.	Item	Code No.
1. Hard Arkansas Stone - 7" x 2" x 1/2" on wood block	4030	4. Hard Arkansas Stone - 3" x 1" x 1/4" with Leather Pouch	4000	8. Silicone Carbide Stone - 6" x 2" x 1/2" on wood block	4045
2. Soft Arkansas Stone - 7" x 2" x 1/2" on wood block	4025	5. Soft Arkansas Stone - 3" x 1" x 1/4" with Leather Pouch	4005	9. Ceramic Crocksticks - Wood base	4020
3. Soft & Hard Arkansas Stones 3-1/2" each - on wood block with honing oil	4035	6. Honing Kit - 2 stones (Soft Arkansas)	4010	10. Mini Dog - Ceramic field sharpener	2185
		7. Tri-hone 6" - 3 stones (Silicone Carbide) Hard Arkansas & Soft Arkansas) on wood block with honing oil	4015	11. Queen Steel Honing Oil - 3 oz.	4040

## Lansky Sharpeners



A. LS1 - Standard Sharpening System - Coarse, Medium and Fine Hone

B. LS2 - Multi-Purpose Puck Sharpener (Dual Grit) Course and Medium - Pocket Size

C. LS3 - Great for sharpening garden tools and machetes

D. LS4 - Fold-A-Vee - Two stage crockstick sharpener. Folds to convenient pocket size.

**The Queen Cutlery Company**

P.O. Box 500

26 Empire Street

Franklinville, NY 14737

**Phone:**

716-676-5527

800-222-5233

**Fax:** 716-676-5535

website: [www.dotc.com/OKC](http://www.dotc.com/OKC)

email: [salesOKC@aol.com](mailto:salesOKC@aol.com)