

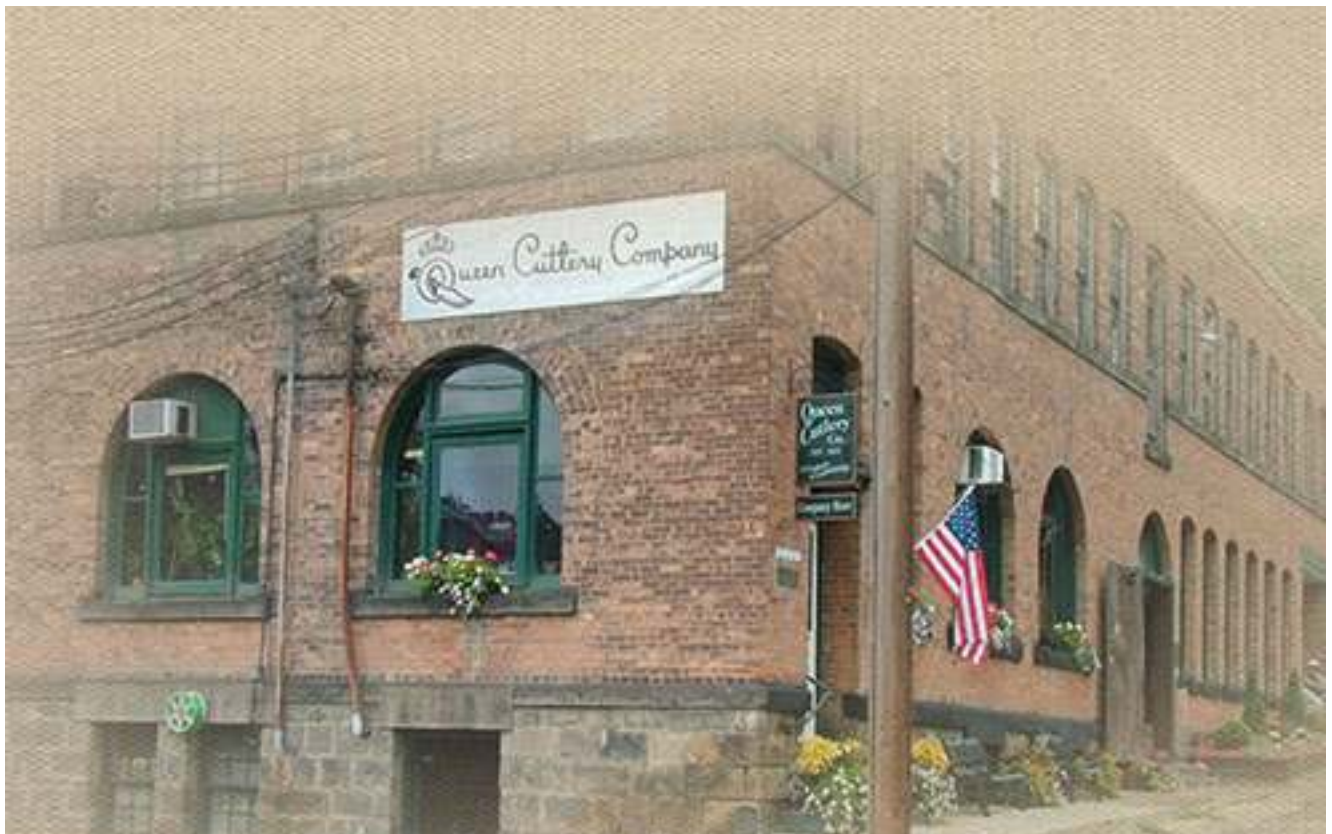


Queen Cutlery Company



**2015 Catalog**  
**HANDMADE IN THE U.S.A**





## The Talking Walls of Queen Cutlery

*"If the walls of Queen Cutlery could only talk!" That is the first thought for most of us when walking through the doors of America's oldest knife manufacturer. Knives have been made continuously here since 1902. Preserved within this old building on 507 Chestnut Street is an unequalled commitment to the American cutlery tradition, from a time when Craftsmanship and quality towered overall.*

*Every knife made in the Queen factory today is continuing that tradition of quality that began in 1902. Each person who has a hand in making a knife within these hallowed walls is fully aware that their work—and craftsmanship—is being overseen by the ghosts and legacy of cutlers who made knives at this same location over a century ago.*

*In that unique way these walls do indeed talk, still reflecting the whump of machinery, the tap of the cutler's adjusting hammer and the walk and talk of a finely crafted knife.*



The old English cutlers called the feel of a blade tang against the backspring the "walk", and the crisp snap of the blade closing when properly fitted the "talk". A knife with "walk and talk" is a familiar term at Queen today, an art that is becoming more rare with the move by many manufacturers to produce springless locking liner knives.

The cutler's sounds can still be heard today within these walls. Queen Cutlery has improved and modernized the materials—better steels, stronger handle materials, more durable knives—but they have kept the tradition of craftsmanship and quality that remains unchanged as it was since those first knives were made here in so long ago.

This legacy predates even Queen Cutlery. The factory's first tenant of 507 Chestnut Street was the Schatt & Morgan Cutlery Company.





*Schatt & Morgan  
Cutlery Co.*

# Limited Production

## *File and Wire Series*

John W. Schatt and Charles B. Morgan established the Schatt & Morgan Cutlery Company in 1895 as an importing and contract label knife Company known as the "New York Cutlery Company" (not to be confused with the well-known New York Knife Company of the same era.) The two men opened an office in New York City, 1896 and soon moved to Schatt's hometown of Gowanda, New York. In July of 1897 Schatt & Morgan purchased the Platts' Cutlery plant in Gowanda. The Platts family bears their own story of their contribution to American cutlery. They were originally Sheffield cutlers who immigrated to the US to work as cutlers in the burgeoning cutlery factories of the Connecticut Valley. When J.B.F. Champlin started Cattarugus Cutlery he hired Charles Platts to come to Little Valley, NY and his sons would eventually start the Platts' factory that would later sell to Schatt & Morgan made knives in Gowanda until 1902, when they moved to the Titusville, Pennsylvania, to a factory on Chestnut Street, where they incorporated. In 1991 Queen Cutlery would revive the trademark of their forbearers, with recreations of those classic vintage patterns and that revival continues today, as the File and Wire Series.

### Pint Stag Gunstock Jack

#032140F&W



Blade Length: 2-7/8"  
Blade Style: Clip and Spear  
Steel: D-2 Tool Steel

Length Open: 6-3/8"  
Length Closed: 3-5/8"  
Weight: 2.9 oz  
Rockwell: 57-59

*Scotchman  
Cutlery Co.*

# Limited Production

*File and Wire Series*

**Deluxe Quart Barlow**  
#032171F&W



Blade Length: 4"  
Blade Style: *Clip and Spear*  
Steel: *ATS-34*

Length Open: 9-7/8"  
Length Closed: 5"  
Weight: 2.6 oz  
Rockwell: 57-59

**Deluxe Pint Barlow**  
#032197F&W



Blade Length: 3"  
Blade Style: *Clip and Spear*  
Steel: *ATS-34*

Length Open: 6-1/2"  
Length Closed: 3-1/4"  
Weight: 2.6 oz  
Rockwell: 57-59

**All knives are handled in Genuine Torched Stag  
and feature brass liners, nickel silver pins, and nickel silver bolsters.**



Limited to 400

Schmitt Morgan  
Cutlery Co.

# Limited Production

*Keystone Series*

## 033198KS Large Sleeve Board

\*1st Quarter Release



Blade Length: 3-1/2"  
Blade Style: *Clip, Pen Coping*  
Steel: *Stainless Steel*

Length Open: 10"  
Length Closed: 4-1/2"  
Weight: 3.6 oz  
Rockwell: 57-59

## 033150KS Reverse Gunstock

\*2nd Quarter Release



Blade Length: 3-3/4"  
Blade Style: *Clip, Sheepfoot, Spey*  
Steel: *Stainless Steel*

Length Open: 7-1/2"  
Length Closed: 4"  
Weight: 4.1 oz  
Rockwell: 57-59

All knives are handled in **Genuine Torched Stag**  
and feature **brass liners, nickel silver pins, and nickel silver bolsters.**

Limited to 400

Schattschneider  
Cutlery Co.

# Limited Production

*Keystone Series*

## 03124LKS Woodsman Lockback

\*3rd Quarter Release



Blade Length: 3-3/4"  
Blade Style: Clip  
Steel: Stainless Steel

Length Open: 6-7/8"  
Length Closed: 3-3/4"  
Weight: 4 oz  
Rockwell: 57-59

## 033043-1/2KS Jumbo Carpenter Whittler

\*4th Quarter Release



Blade Length: 3-1/2"  
Blade Style: Clip  
Steel: Stainless Steel

Length Open: 10-1/4"  
Length Closed: 4-1/4"  
Weight: 3.7 oz  
Rockwell: 57-59

All knives are handled in Genuine Torched Stag  
and feature brass liners, nickel silver pins, and nickel silver bolsters.

-Page 4-

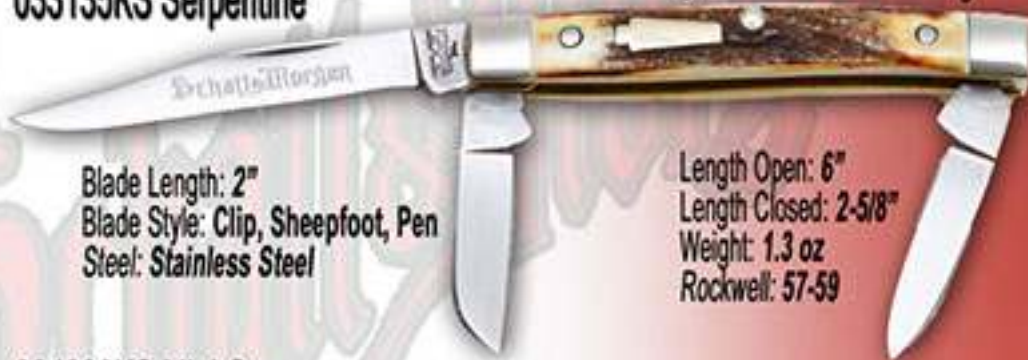


*Standard Production*  
*Gallery Co.*

# Standard Production

*Gentlemen's Stag Series*

## 033135KS Serpentine



Blade Length: 2"  
Blade Style: Clip, Sheepfoot, Pen  
Steel: Stainless Steel

Length Open: 6"  
Length Closed: 2-5/8"  
Weight: 1.3 oz  
Rockwell: 57-59

## 034230KS Mini Congress



Blade Length: 1-1/2"  
Blade Style: Pen and Sheep Foot  
Steel: Stainless Steel

Length Open: 5-1/2"  
Length Closed: 2-5/8"  
Weight: 1.4 oz  
Rockwell: 57-59

## 032114KS Peanut



Blade Length: 2-1/4"  
Blade Style: Clip and Pen  
Steel: Stainless Steel

Length Open: 5"  
Length Closed: 2-5/8"  
Weight: 1.2 oz  
Rockwell: 57-59

All knives are handled in Genuine Torched Stag  
and feature brass liners, nickel silver pins and nickel silver bolsters.



*Schaeffler  
Cutlery Co.*

# Standard Production

*Gentlemen's Stag Series*

## 031167-1/2KS Mini Barlow



Blade Length: 2-1/4"  
Blade Style: Clip  
Steel: Stainless Steel

Length Open: 4-3/8"  
Length Closed: 2-1/2"  
Weight: .8 oz  
Rockwell: 57-59

## 032167KS Small Barlow



Blade Length: 2-1/2"  
Blade Style: Clip and Pen  
Steel: Stainless Steel

Length Open: 4-3/8"  
Length Closed: 2-1/2"  
Weight: 1.1 oz  
Rockwell: 57-59

## 032206KS Senator



Blade Length: 1-7/8"  
Blade Style: Spear and Pen  
Steel: Stainless Steel

Length Open: 5-1/8"  
Length Closed: 2-1/2"  
Weight: .8 oz  
Rockwell: 57-59

## 032143KS Serpentine



Blade Length: 1-1/2"  
Blade Style: Clip and Pen  
Steel: Stainless Steel

Length Open: 6"  
Length Closed: 3-5/8"  
Weight: 1 oz  
Rockwell: 57-59

 Queen Cutlery Company

# Limited Production

*Queen City*

## 01QC Sway Belly Trapper



Blade Length: 3-1/4"  
Blade Style: Clip and Spear  
Steel: 1095 High Carbon

Length Open: 4-1/4"  
Length Closed: 7-3/8"  
Weight: 4.7 oz  
Rockwell: 57-59

## 27-1/2QC Yankee Muskrat



Blade Length: 3-1/8"  
Blade Style: Clips  
Steel: 1095 High Carbon

Length Open: 4"  
Length Closed: 10-1/4"  
Weight: 4.7 oz  
Rockwell: 57-59

## 71QC Fishermans Barlow



Blade Length: 4"  
Blade Style: Clip  
Steel: 1095 High Carbon

Length Open: 9"  
Length Closed: 5"  
Weight: 4.2 oz  
Rockwell: 57-59

**Limited to 300**



Queen Cutlery Company

# Limited Production

*Joe Pardue*

**CFH-1 Coffin Folding Hunter**

**Limited to 300**



Blade Length: 3-1/2"  
Blade Style: Spear  
Steel: D-2 Tool Steel

Length Open: 7-3/4"  
Length Closed: 4-1/2"  
Weight: 4.9 oz  
Rockwell: 57-59



This is a Joe Pardue Coffin Folding Hunter, made with Genuine Sambar Torched Stag on Nickel Silver Liners. It features Nickel Silver Bolsters, Pins and Queen Embossed Nickel Silver Shield. The Coffin Hunter blade is forged from the strongest and most durable D-2 steel. Hosting a Joe Pardue tang stamp on the front and a Queen Cutlery tang stamp on the back. This Coffin Hunter symbolizes the handmade craftsmanship Joe Pardue and Queen Cutlery brand into every knife.

Ruple



Made in the U.S.A

Queen Cutlery Company

# Limited Production

*Bill Ruple Collaboration*

2014 Production

**Genuine Torched Stag  
Sold Out**



Blade Length: 3-1/4"  
Blade Style: *Clip and Spey*  
Steel: *D-2 Tool Steel*

**Feathered Brown Buffalo Horn**



Length Open: 7-3/4"  
Length Closed: 4-1/2"  
Weight: 5.6 oz  
Rockwell: 57-59

## 2015 Pattern Debuts at BLADE Show!



Ruple has been regarded as one of the top knife makers in the world, whose work has been featured in numerous art knife books and knife periodicals. Bill started out a peanut farmer and pastured cows but started making multi blade folders in 1988. It all began when he ran into an old friend with whom he had grown up. He was making double and single blade trappers so one day he asked him if he could come by and watch him make a knife. Bill was hooked on knife making that day. He then put together a knife shop over the next few weeks and the rest is history. He then made knives part time until 2002 before he retired from farming and started full time as a knifemaker, and he couldn't imagine doing anything else.



Queen Cutlery Company

# Standard Production

*Joe Kious Hunters*

**JK-SB-1 Stag Bone**



**JK-BM-1 Brown Micarta**



**JK-PM-1 Pink Micarta**



Blade Length: 3-5/8"  
Blade Style: Clip  
Steel: 1095 High Carbon

Handmade Leather Sheath



Full Length: 7-3/4"  
Bolster Material: 1095 High Carbon  
Weight: 7.7 oz  
Rockwell: 57-59



*Ashley Wright, our Production Manager, has been hunting since she was a young girl. Following in the footsteps of her Grandfather and Father. At four months pregnant, Ashley took down this monster 14 point buck with an 18" inside spread, in the 2014 rifle season. Ashley used her Pink Joe Kious Knife to dress her huge buck in the field!*

Queen Cutlery Company

# Standard Production CRAFTER



## 4180 Drop Point



Blade Length: 3-1/4"  
Blade Style: Drop Point  
Steel: 1095 High Carbon  
Handle Material: G-10

Full Length: 8"  
Finish: Matte Black Powder Coating  
Weight: 4.5 oz  
Rockwell: 57-59  
Pin: Mosaic Pin

## The Vroman



Blade Length: 3-1/2"  
Blade Style: Drop Point  
Steel: 1095 High Carbon  
Handle Material: G-10

Full Length: 8-5/8"  
Finish: Matte Black Powder Coating  
Weight: 6.8 oz  
Rockwell: 57-59  
Pin: Mosaic Pin



Designing this new powder coated Q-Crafter line is our very own Pat Vroman. Pat has always been an avid outdoorsman and even made his first knife at the age of 9. He designed this line in mind to use out in the field. It's made from strong 1095 Carbon and the matte black powder coating adds extra protection to the blade.



Also Available with Serrated Blade  
QTS-2B QTS-2P QTS-2G

Queen Cutlery Company

# Standard Production TAC

QT-2G 4L OD Green Reg.



QT-2P 4L Pink Reg.



QT-2B 4L Black Reg.



**NEW!**

Blade Length: 3"  
Blade Style: Clip  
Steel: D-2 Tool Steel

Length Open: 6-7/8"  
Length Closed: 3-3/4"  
Weight: 2.6 oz  
Rockwell: 57-59

All knives are handled in G-10 and feature  
nickel silver liners, nickel pins, belt clip, thumb stud and nickel silver bolsters.

Also Available with Regular Blade

QT-1B QT-1P QT-1G

Queen Cutlery Company

# Standard Production TAC

QTS-1G 3L OD Green Serr.



QTS-1P 3L Pink Serr.



QTS-1B 3L Black Serr.



Blade Length: 3-3/4"  
Blade Style: Clip  
Steel: D-2 Tool Steel

Length Open: 8"  
Length Closed: 4-1/4"  
Weight: 4.8 oz  
Rockwell: 57-59

All knives are handled in G-10 and feature  
nickel silver liner, nickel silver pins, belt clip, thumb stud and nickel silver bolsters.



Handle Material will Vary Based on Availability

 Queen Cutlery Company

# Standard Production

*Work Horse*

## #9WH Stockman



Blade Length: 3"  
Blade Style: *Clip, Sheepfoot and Spey*  
Steel: 1095 High Carbon

Length Open: 8-1/4"  
Length Closed: 4-1/2"  
Weight: 4.2 oz  
Rockwell: 57-59

## #26WH Small Stockman



Blade Length: 3-1/2"  
Blade Style: *Clip, Sheepfoot, Spey*  
Steel: 1095 High Carbon

Length Open: 7-1/2"  
Length Closed: 4"  
Weight: 3.3 oz  
Rockwell: 57-59

All knives are handled in Plastic Delrin and feature  
brass liners, brass pins, and nickel silver bolsters with birds eye raised pins.

Handle Material will Vary Based on Availability

Queen Cutlery Company

# Standard Production

*Work Horse*

#56WH Small Coke Bottle **NEW!**



Blade Length: 2-3/4"  
Blade Style: Clip, Pen  
Steel: 1095 High Carbon

Length Open: 6-1/2"  
Length Closed: 3-1/2"  
Weight: 4.2 oz  
Rockwell: 57-59

#69WH Barlow **NEW!**



Blade Length: 2-3/4"  
Blade Style: Clip  
Steel: 1095 High Carbon

Length Open: 6-1/4"  
Length Closed: 3-1/2"  
Weight: 3.3 oz  
Rockwell: 57-59

All knives are handled in Plastic Delrin and feature  
brass liners, brass pins, and nickel silver bolsters with birds eye raised pins.



Queen Cutlery Company

# Standard Production

*Stag Bone*

#1LSB Lockback



Blade Length: 3-3/4"  
Blade Style: *Spear*  
Steel: *D-2 Tool Steel*

Length Open: 7-1/4"  
Length Closed: 4-1/2"  
Weight: 3.6oz  
Rockwell: 57-59

#9SB Large Stockman



Blade Length: 3"  
Blade Style: *Clip, Sheepfoot and Spey*  
Steel: *D-2 Tool Steel*

Length Open: 7"  
Length Closed: 4"  
Weight: 3.1 oz  
Rockwell: 57-59

**All knives are handled in Stag Bone  
and feature brass liners, brass pins, and nickel silver bolsters**

Queen Cutlery Company

# Standard Production

*Stag Bone*

## #3LSB Lockback Mountain Man



Blade Length: 3-3/4"  
Blade Style: Clip  
Steel: D-2 Tool Steel

Length Open: 8-1/4"  
Length Closed: 4-1/2"  
Weight: 4.8 oz  
Rockwell: 57-59

## #03SB Small Sleeve Board

NEW!



Blade Length: 2-1/8"  
Blade Style: Clip, Pen  
Steel: D-2 Tool Steel

Length Open: 6-3/4"  
Length Closed: 3-3/8"  
Weight: 1.2 oz  
Rockwell: 57-59

All knives are handled in Stag Bone  
and feature brass liners, brass pins, and nickel silver bolsters.



Queen Cutlery Company

# Standard Production

*Stag Bone*

## #19SB Large Trapper



Blade Length: 3-3/8"  
Blade Style: *Clip, Spey*  
Steel: *D-2 Tool Steel*

Length Open: 7-1/2"  
Length Closed: 4-1/8"  
Weight: 3.6 oz  
Rockwell: 57-59

## #26SB Small Stockman



Blade Length: 3-3/4"  
Blade Style: *Clip, Sheepfoot and Spey*  
Steel: *D-2 Tool Steel*

Length Open: 7-3/4"  
Length Closed: 3-1/4"  
Weight: 3 oz  
Rockwell: 57-59

**All knives are handled in Stag Bone  
and feature brass liners, brass pins, and nickel silver bolsters.**

Queen Cutlery Company

# Standard Production

*Stag Bone*

## #39SB Folding Hunter



Blade Length: 4"  
Blade Style: *Clip and Skinner*  
Steel: *D-2 Tool Steel*

Length Open: 9-1/4"  
Length Closed: 5-1/4"  
Weight: 7 oz  
Rockwell: 57-59

## #41LSB Liner Lock Copperhead



Blade Length: 2-7/8"  
Blade Style: *Clip*  
Steel: *D-2 Tool Steel*

Length Open: 6"  
Length Closed: 3-3/4"  
Weight: 2.7 oz  
Rockwell: 57-59

**All knives are handled in Stag Bone  
and feature brass liners, brass pins, and nickel silver bolsters.**



Queen Cutlery Company

# Standard Production

*Stag Bone*

## #48SB Split Back Whittler



Blade Length: 3-1/2"  
Blade Style: *Clip, Pen and Coping*  
Steel: D-2 Tool Steel

Length Open: 7-1/2"  
Length Closed: 4"  
Weight: 4 oz  
Rockwell: 57-59

## #63SB Railsplitter



Blade Length: 2-5/8"  
Blade Style: *Clip, Sheepfoot and Spey*  
Steel: D-2 Tool Steel

Length Open: 6-3/8"  
Length Closed: 3-3/4"  
Weight: 3.6 oz  
Rockwell: 57-59

**All knives are handled in Stag Bone  
and feature brass liners, brass pins, and nickel silver bolsters.**

Queen Cutlery Company

# Standard Production

*Stag Bone*

## #49SB Large Cattle King



Blade Length: 3-1/2"  
Blade Style: Clip, Sheepfoot, Spey  
Steel: D-2 Tool Steel

Length Open: 7-1/2"  
Length Closed: 4"  
Weight: 4.1 oz  
Rockwell: 57-59

## #69SB Barlow



Blade Length: 2-3/4"  
Blade Style: Clip  
Steel: D-2 Tool Steel

Length Open: 6-1/4"  
Length Closed: 3-1/2"  
Weight: 3 oz  
Rockwell: 57-59

**All knives are handled in Stag Bone  
and feature brass liners, brass pins, and nickel silver bolsters.**



Queen Cutlery Company

# Standard Production

*Stag Bone*

#69-1/2SB Barlow **NEW!**



Blade Length: 2-3/4"  
Blade Style: *Clip and Pen*  
Steel: D-2 Tool Steel

Length Open: 6-1/4"  
Length Closed: 3-1/2"  
Weight: 3 oz  
Rockwell: 57-59

#99BS Scout



Blade Length: 2-5/8"  
Blade Style: *Spear, Can Opener*  
Belt Punch, Screw Driver  
Steel: D-2 Tool Steel

Length Open: 6-3/8"  
Length Closed: 3-3/4"  
Weight: 3.6 oz  
Rockwell: 57-59

**All knives are handled in Stag Bone  
and feature brass liners, brass pins, and nickel silver bolsters.**

Queen Cutlery Company

# Standard Production

*Stag Bone*

## #112-1/2 Medium Toothpick



Blade Length: 3-3/4"  
Blade Style: *Clip*  
Steel: *D-2 Tool Steel*

Length Open: 7-3/4"  
Length Closed: 4-1/4"  
Weight: 2.1 oz  
Rockwell: 57-59

## #70B Traditional



Blade Length: 3"  
Blade Style: *Drop Point*  
Steel: *D-2 Tool Steel*

Length Open: 6-5/8"  
Length Closed: 3-5/8"  
Weight: 2.1 oz  
Rockwell: 57-59

**All knives are handled in Stag Bone  
and feature brass liners, brass pins, and nickel silver bolsters.**



Queen Cutlery Company

Limited to 500

# Limited Production

*Feathered Buffalo Horn*

#1LFBH Lockback NEW!



Blade Length: 3-3/4"  
Blade Style: *Spear*  
Steel: *D-2 Tool Steel*

Length Open: 8-1/4"  
Length Closed: 4-1/2"  
Weight: 3.1 oz  
Rockwell: 57-59

#03FBH Small Sleeve Board NEW!



Blade Length: 2-1/8"  
Blade Style: *Clip and Pen*  
Steel: *D-2 Tool Steel*

Length Open: 6-3/4"  
Length Closed: 3-3/8"  
Weight: 2.2 oz  
Rockwell: 57-59

All knives are handled in Feathered Buffalo Horn  
and feature brass liners, brass pins, and nickel silver bolsters.

Queen Cutlery Company

Limited to 500

# Limited Production

#3LFBH Mountain Man Lockback *Feathered Buffalo Horn*



Blade Length: 4 3/4"  
Blade Style: Clip  
Steel: D-2 Tool Steel

Length Open: 8 1/4"  
Length Closed: 4 1/2"  
Weight: 4.2 oz  
Rockwell: 57-59

#9FBH Large Stockman



Blade Length: 3"  
Blade Style: Clip, Spey  
Sheep Foot  
Steel: D-2 Tool Steel

Length Open: 6 1/4"  
Length Closed: 3 3/4"  
Weight: 3.4 oz  
Rockwell: 57-59

All knives are handled in Feathered Buffalo Horn  
and feature brass liners, brass pins, and nickel silver bolsters.



Queen Cutlery Company

Limited to 500

# Limited Production

**#19FBH Large Trapper**

*Feathered Buffalo Horn*



Blade Length: 3-3/8"  
Blade Style: *Clip, Spey*  
Steel: *D-2 Tool Steel*

Length Open: 7-1/2"  
Length Closed: 4-1/8"  
Weight: 3.3 oz  
Rockwell: 57-59

**#26FBH Small Stockman**



Blade Length: 3-3/4"  
Blade Style: *Clip, Sheepfoot, Spey*  
Steel: *D-2 Tool Steel*

Length Open: 7-3/4"  
Length Closed: 3-1/4"  
Weight: 1.9 oz  
Rockwell: 57-59

All knives are handled in Feathered Buffalo Horn  
and feature brass liners, brass pins, and nickel silver bolsters.

Queen Cutlery Company

Limited to 500

# Limited Production

**#39FBH Folding Hunter**

*Feathered Buffalo Horn*



Blade Length: 4"  
Blade Style: *Clip and Skinner*  
Steel: *D-2 Tool Steel*

Length Open: 9-1/4"  
Length Closed: 5-1/2"  
Weight: 7 oz  
Rockwell: 57-59

**#41LFBH Liner Lock Copperhead**



Blade Length: 3"  
Blade Style: *Clip*  
Steel: *D-2 Tool Steel*

Length Open: 8"  
Length Closed: 3-3/4"  
Weight: 2.4 oz  
Rockwell: 57-59

**All knives are handled in Feathered Buffalo Horn  
and feature brass liners, brass pins, and nickel silver bolsters.**



Queen Cutlery Company

Limited to 500

# Limited Production

**#48FBH Split Back Whittler**

*Feathered Buffalo Horn*



Blade Length: 2-1/8"  
Blade Style: *Clip, Coping, Pen*  
Steel: D-2 Tool Steel

Length Open: 7-1/2"  
Length Closed: 3.5"  
Weight: 1.9 oz  
Rockwell: 57-59

**#49FBH Large Cattle King**



Blade Length: 3-1/2"  
Blade Style: *Clip, Sheepfoot, Spey*  
Steel: D-2 Tool Steel

Length Open: 7-1/2"  
Length Closed: 4"  
Weight: 4 oz  
Rockwell: 57-59

All knives are handled in Feathered Buffalo Horn  
and feature brass liners, brass pins, and nickel silver bolsters.

Queen Cutlery Company

Limited to 500

# Limited Production

**#63FBH Railsplitter**

*Feathered Buffalo Horn*



Blade Length: 2-5/8"  
Blade Style: Clip, Coping, Pen  
Steel: D-2 Tool Steel

Length Open: 6-3/8"  
Length Closed: 3-3/4"  
Weight: 3.57 oz  
Rockwell: 57-59

**#69FBH Barlow**

NEW!



Blade Length: 2-3/4"  
Blade Style: Clip  
Steel: D-2 Tool Steel

Length Open: 6-1/4"  
Length Closed: 3-1/2"  
Weight: 3 oz  
Rockwell: 57-59

All knives are handled in Feathered Buffalo Horn  
and feature brass liners, brass pins, and nickel silver bolsters.



Queen Cutlery Company

Limited to 500

# Limited Production

#69-1/2FBH Barlow **NEW!**

*Feathered Buffalo Horn*



Blade Length: 2-3/4"  
Blade Style: *Clip and Pen*  
Steel: *D-2 Tool Steel*

Length Open: 6-3/8"  
Length Closed: 3-1/2"  
Weight: 3.3 oz  
Rockwell: 57-59

#99FBH Scout **NEW!**



Blade Length: 2-1/2"  
Blade Style: *Spear, Screw Driver,  
Can Opener, Leather Punch*  
Steel: *D-2 Tool Steel*

Length Open: 8"  
Length Closed: 3-5/8"  
Weight: 3.5 oz  
Rockwell: 57-59  
Bail: *Nickel Silver*

#112-1/2FBH Medium Toothpick



Blade Length: 4"  
Blade Style: *Clip*  
Steel: *D-2 Tool Steel*

Length Open: 9"  
Length Closed: 5"  
Weight: 2.8 oz  
Rockwell: 57-59

All knives are handled in Feathered Buffalo Horn  
and feature brass liners, brass pins, and nickel silver bolsters.

Queen Cutlery Company

# Standard Production

*American Walnut*

## #9WAL Large Stockman



Blade Length: 3"  
Blade Style: *Clip, Sheepfoot, Spey*  
Steel: *D-2 Tool Steel*

Length Open: 7"  
Length Closed: 4"  
Weight: 2.9 oz  
Rockwell: 57-59

## #48WAL Split Back Whittler



Blade Length: 3-1/2"  
Blade Style: *Clip, Pen and Coping*  
Steel: *D-2 Tool Steel*

Length Open: 7-1/2"  
Length Closed: 4"  
Weight: 4.1 oz  
Rockwell: 57-59

All knives are handled in American Walnut  
and feature brass liners, brass pins, and nickel silver bolsters.



Queen Cutlery Company

# Standard Production

**#19LWAL Liner Lock Large Trapper**

*American Walnut*

NEW



Blade Length: 3-3/8"  
Blade Style: *Clip, Spey*  
Steel: D-2 Tool Steel

Length Open: 7-1/2"  
Length Closed: 4-1/8"  
Weight: 3.4 oz  
Rockwell: 57-59

**#19WAL Large Trapper**



Blade Length: 3-3/8"  
Blade Style: *Clip, Spey*  
Steel: D-2 Tool Steel

Length Open: 7-1/2"  
Length Closed: 4-1/8"  
Weight: 3.4 oz  
Rockwell: 57-59

All knives are handled in American Walnut  
and feature brass liners, brass pins, and nickel silver bolsters.

Queen Cutlery Company

# Standard Production

*American Walnut*

## #49WAL Cattle King



Blade Length: 3-1/2"  
Blade Style: Clip, Sheepfoot, Spey  
Steel: D-2 Tool Steel

Length Open: 7-1/2"  
Length Closed: 4"  
Weight: 4.1 oz  
Rockwell: 57-59

## #63WAL Rail Splitter



Blade Length: 2-5/8"  
Blade Style: Clip, Pen and Coping  
Steel: D-2 Tool Steel

Length Open: 6-3/8"  
Length Closed: 3-3/4"  
Weight: 3.6 oz  
Rockwell: 57-59

All knives are handled in American Walnut  
and feature brass liners, brass pins, and nickel silver bolsters.



Queen Cutlery Company

# Standard Production

#69WAL Barlow **NEW!**

*American Walnut*



Blade Length: 2-3/4"  
Blade Style: Clip  
Steel: D-2 Tool Steel

Length Open: 6-1/4"  
Length Closed: 3-1/4"  
Weight: 3 oz  
Rockwell: 57-59

#69-1/2WAL Barlow **NEW!**



Blade Length: 2-3/4"  
Blade Style: Clip, Pen  
Steel: D-2 Tool Steel

Length Open: 6-1/4"  
Length Closed: 3-1/2"  
Weight: 3 oz  
Rockwell: 57-59

#112-1/2WAL Medium Toothpick



Blade Length: 3-3/4"  
Blade Style: Clip  
Steel: D-2 Tool Steel

Length Open: 7-3/4"  
Length Closed: 4-1/4"  
Weight: 2.1 oz  
Rockwell: 57-59

All knives are handled in American Walnut  
and feature brass liners, brass pins, and nickel silver bolsters.

**NEW!**

Queen Cutlery Company

# Standard Production

*Spiral Buffalo Horn Heavy Hunter*

## #4180SBH Drop Point



Blade Length: 3-3/4"  
Blade Style: Drop Point  
Steel: D-2 Tool Steel

Length Open: 8"  
Weight: 6.6 oz  
Rockwell: 57-59

## #4185SBH Sabre



Blade Length: 3-3/4"  
Blade Style: Sabre  
Steel: D-2 Tool Steel

Length Open: 8"  
Weight: 6.6 oz  
Rockwell: 57-59

## #4190SBH Skinner



Blade Length: 3-3/4"  
Blade Style: Skinner  
Steel: D-2 Tool Steel

Length Open: 7-3/4"  
Weight: 6.6 oz  
Rockwell: 57-59

All knives are handled in Spiral Buffalo Horn  
and feature stainless pins and nickel silver bolsters.



Queen Cutlery Company

# Standard Production

*Stag Bone Light Hunters*

## #F7SB Fillet



Blade Length: 3-7/8"  
Blade Style: Fillet  
Steel: Stainless Steel

Length Open: 11"  
Bolster Material: Stainless Steel  
Weight: 3.2 oz  
Rockwell: 57-59

## #57SB Fish Knife NEW!



Blade Length: 4-1/2"  
Blade Style: Fish Scaler  
Steel: Stainless Steel

Length Open: 8-1/2"  
Bolster Material: Stainless Steel  
Weight: 3.1 oz  
Rockwell: 57-59

## #87SB Caping Knife NEW!



Blade Length: 2-1/4"  
Blade Style: Caping  
Steel: Stainless Steel

Length Open: 5-1/4"  
Weight: 1 oz  
Rockwell: 57-59

**All knives are handled in Stag Bone  
and feature nickel silver pins and stainless guards.**

# Standard Production

## Stag Bone Light Hunters

### #85SB Trout Knife



Blade Length: 3"  
Blade Style: Drop Point  
Steel: Stainless Steel

Length Open: 6-3/8"  
Bolster Material: Stainless Steel  
Weight: 1.6 oz  
Rockwell: 57-59

### #89SB Canoe Knife



Blade Length: 7-3/8"  
Blade Style: Drop Point  
Steel: Stainless Steel

Length Open: 7-1/2"  
Bolster Material: Stainless Steel  
Weight: 3.3 oz  
Rockwell: 57-59

### #92SB Deer Skinner



Blade Length: 4-1/8"  
Blade Style: Drop Point  
Steel: Stainless Steel

Length Open: 8"  
Bolster Material: Stainless Steel  
Weight: 3.3 oz  
Rockwell: 57-59

### #98SB Buffalo Skinner



Blade Length: 4"  
Blade Style: Skinner  
Steel: Stainless Steel

Length Open: 7-3/4"  
Bolster Material: Stainless Steel  
Weight: 3.5 oz  
Rockwell: 57-59





# Queen Cutlery Company

## Queen Kiddo Project



Our Kiddo Project has really taken off! These kids attended the shows and received their kiddo knife from Ken Daniels, some of which have come back for their second knife. Ken's giving nature has proven to stimulate kids in knife collecting!



# Queen Cutlery Co. Warranty

Queen Cutlery Company knives are designed and built for use as cutting tools. Use of our knives for any purpose other than cutting is considered abuse. As with any tool Queen Cutlery Company knives can wear out. They may also fail to perform if not used or cared for properly. If your knife has been put to hard use for a long period of time, it is possible that the useful life of the Queen Cutlery Company product has been exceeded and Queen Cutlery Company will be unable to perform any work upon the knife that will improve the condition thereof.

## WARRANTY INFORMATION:

>Queen Cutlery Company warrants that all of our products are free from defects in material and workmanship.  
>Repairs to your knife performed by any source other than Queen Cutlery Company unconditionally voids the knife's warranty.

>Queen Cutlery Company's warranty does not cover damage caused by abuse, misuse, loss, improper handling, alterations, accident, neglect, disassembly, or improper sharpening.

>If a knife fails to function as it was designed, we will examine its condition upon its return to Queen Cutlery Company identify why it failed and respond in an appropriate manner.

>If we determine there is a defect in the manufacture/materials/workmanship, Queen Cutlery Company will repair, or replace that product with the same model or one of equal value at its own expense.

If Queen Cutlery Company is unable to improve the condition of the knife, we will return it to you with the recommendation it be retired from use. All costs associated with shipment of the product(s) are the responsibility of the customer.

## WHERE TO SEND YOUR KNIFE:

When sending your knife for warranty or repair, include a description of the problem and how it occurred. Please send your knife in a box. Knives have a tendency to tear envelopes in transit, include: Company or individual name, return address daytime phone number. We recommend shipping UPS or registered mail for your tracking purposes.

Queen Cutlery Company  
507 Chestnut St.  
Titusville, PA 16354

## RELEASE, ASSUMPTION OF RISK, WAIVER OF LIABILITY AND INDEMNITY AGREEMENT.

By purchasing any item produced by Queen Cutlery Company the buyer assumes responsibility to ascertain and follow all applicable federal, state, local and international laws in having, owning, carrying, shipment, transporting, and use of any Queen Cutlery Company product. The buyer expressly agrees to indemnify and hold harmless Queen Cutlery Company, for all claims resulting directly or indirectly from the purchase, ownership, transportation or use of the item in violation of applicable federal, state and local laws or regulations. Queen Cutlery Company is not liable for misuse of any Queen Cutlery Company knife or product purchased either directly from Queen Cutlery Company or from a dealer/distributor.

Information on this site is subject to change without notice. Modification of products, materials, measurements, technical specifications and availability can occur. Contact your local Queen Cutlery Company dealer for information.

Phone: 814-827-3673

Fax: 814-827-9693

## Contacts

Ken Daniels, CEO

Jennie Moore, President

Ryan Daniels, Vice President/Sales [rdaniels@queencutlery.com](mailto:rdaniels@queencutlery.com) (740-418-0142)

David Mullins, Director [dmullins@queencutlery.com](mailto:dmullins@queencutlery.com)

Ashley Wright, Production Manager [awright@queencutlery.com](mailto:awright@queencutlery.com)

Pat Vroman, Quality Control [pvroman@queencutlery.com](mailto:pvroman@queencutlery.com)

Ashley Nottingham, Graphic Design and Purchasing [anottingham@queencutlery.com](mailto:anottingham@queencutlery.com)

Nichole Moore, Accounts Payable and Receivable [nmoore@queencutlery.com](mailto:nmoore@queencutlery.com)

Elaine Lytle, Repairs [elytle@queencutlery.com](mailto:elytle@queencutlery.com)

David Clark, Historian [dclark@queencutlery.com](mailto:dclark@queencutlery.com)

Queen Cutlery Company  
507 Chestnut Street  
P.O. Box 408  
Titusville, Pa 16354



*In loving Memory  
Joe Kiouss  
1945-2014*

*Thank you for being apart of our family.*



**C. Risner Cutlery**

 **& Queen Cutlery Company**

**PROUDLY PRESENTS**

# **KNIFE DAYS**

*A Celebration of all things*

**KNIVES**

**Antique Tactical Hand Made**

**APRIL, 16-18 2015**

**OCTOBER, 16-18 2015**

**At The**

**Roberts Center**

**in**

**Wilmington Ohio**

**APRIL HOURS: 12-6 THURS, 9-5 FRI, 9-3, SAT.**

**SET-UP HRS: 8-12 THURSDAY**

**OCTOBER HOURS: 10-6 FRI, 9-5 SAT, 9-2, SUN.**

**SET-UP HRS: 6-10 FRIDAY**

**CLARENCE RISNER**

**K. RYAN DANIELS**

**(937) 848-2870**

**(740) 418-0142**

**RISNEREYEBRAND@AOL.COM RDANIELS@QUEENCUTLERY.COM**

**WWW.KNIFEDAYS.COM**

TRADE  
*SCHATT* X *MORGAN*  
MARK



*Schatt & Morgan*  
*Cutlery Co.*

*Proudly Handmade Since 1902*