

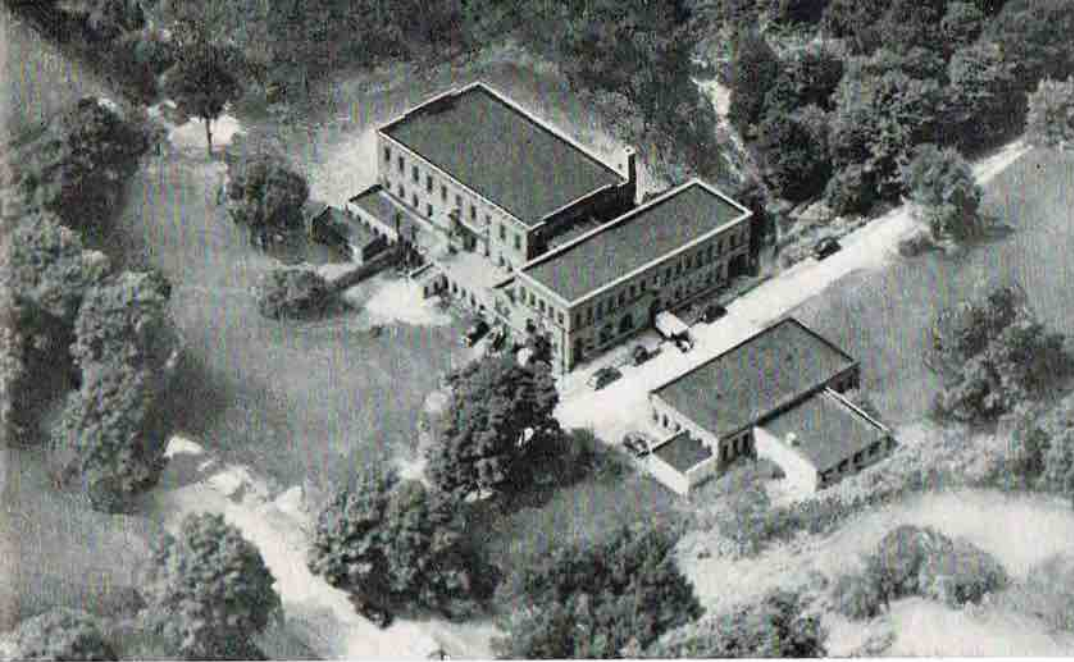


QUEEN CUTLERY COMPANY

10 COMMERCE COURT

NEWARK 2, N. J.

•
Catalog No. 89



THE FACTORY
*Aerial photo of the
 Factory buildings at
 Titusville, Penna.*

*W*e are proud that Queen products are considered amongst the finest in the world. The reason no doubt is that Queen products are made only of the finest materials combined with the very best labor of our master workmen.

In this catalog you will find some attractive new items as well as improvements on some of the old patterns. We want to thank you for your past patronage and will do our utmost to continue to give you prompt delivery and efficient service and, as always, the very finest quality products at the most reasonable prices.

QUEEN CUTLERY COMPANY

Index

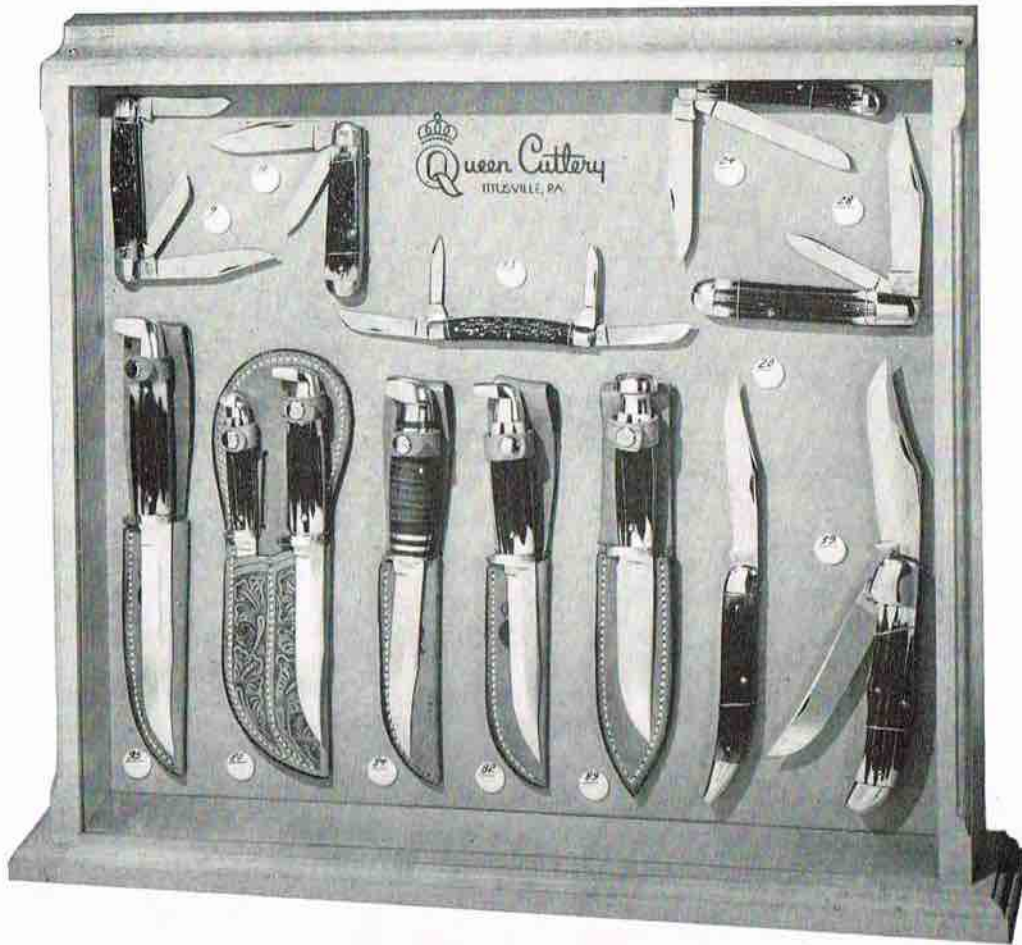
	Pages
Axes	13
Barbecue Set	60
De Luxe Matched Table Cutlery Chests	47-57
De Luxe Matched Table Line	46
Display Cases	2-6
Formica Line	42
Formica Steak Sets	43-45
Hair Clippers	34
Hunting & Fishing Knives	7-12
Kitchen Line	41
Kitchen Sets	58-59
Pocket & Pen Knives	14-33
Scissors & Shears	35-40



No. 1 Display Case

Small up-right display case, light oak finish featuring some of our hunting and pocket knives for illustration purposes. This case measures 12 x 15 inches and will hold 16 pocket knives or 8 hunting knives. This case should be mounted with the patterns that you carry in stock. It has folding legs in the rear for standing support or it can be hung on the wall by two hooks in the rear. Marking buttons which identify each number and also have space for you to mark your resale price are available. If you desire one of these display cases, write us or ask our salesman.

Display Cases Double Your Sales



No. 1 Special Display Case

This case measures 18x15 inches and has a light oak finish and the display board will hold 25 pocket knives or 12 hunting knives or any combination of same. This case should be mounted with the patterns you carry in stock. It has folding legs in the rear for standing support or it can be hung up on the wall by two hooks in the rear. Please note the marking buttons which identify each number and also have space for you to write in your resale price. If you desire one, write us or ask our salesman.

Display Cases Save Handling Knives



No. 3 Display Case

Large counter display case, light oak finish. Measures 24 x 24 inches and will hold 56 pocket knives or 28 hunting knives. A hunting knife takes twice as much room as a pocket knife on a display board; a scissor or butcher knife three times as much room as a pocket knife. Combination hunting knives such as our #80 etc., take up twice as much room as the average hunting knife. Storage space for stock in the rear with lock. If desired marking buttons can be had for each number mounted. These buttons have space both for you to mark your resale price and pattern number for each knife. This case should be mounted with patterns that you carry in stock. If you desire one, write us or ask our salesman.

Display Cases Save Half Of Your Salesman's Time



No. 4-A Display Case

Large floor display case, light oak finish. It stands 45½ inches high and its display panel measures 28 x 38 inches. Figure 10 square inches for a pocket knife, 20 square inches of display space for hunting knives and 30 square inches for scissors or carving knives. Storage space in rear with lock. Individual marking buttons will be furnished identifying each pattern number and also allowing space for you to mark your resale price. An outstanding fixture for the progressive dealer. If you desire one, write us or ask our salesman.

Other larger display cases or special display panels will gladly be furnished to accommodate your needs.

Display Cases Double Your Sales



No. 5-A Display Case

Our largest Floor Display Case — Light Oak finish. It stands 45½ inches high and contains two display panels, each measuring 28 inches by 38 inches. Has sufficient display room to mount one each of every individual pattern in our line. Storage space in rear with lock. Individual marking buttons will be furnished identifying each pattern number and also allowing space for you to mark your resale price. An outstanding fixture for the progressive dealer. If you desire one, write us or ask our salesman.

Display Cases Double Your Sales



All Queen Hunting Knives are made of the Finest Stainless Steel



No. 80 Combination Hunting Set — Genuine *Frontier* bone stag handles. The steel used in these knives is the finest in the world. It is stainless and is especially made to conform with Queen's rigid specifications. Will not rust or stain and because of Queen's secret tempering process, will stay sharp far longer than any other knives. One hunting knife with 4 inch saber ground blade and one Rabbit knife with 3 inch flat ground blade. Complete in one handsome double leather sheath made of top grain cowhide, saddle stitched with handtooled floral design. Individually boxed.

No. 81 Combination Hunting Set — Same as above, except simulated pearl handles.

No. 94 — Same as above, except with amber handles.

No. 97 — Same as above, except with brilliant red handles for hunter's safety.



No. 82 Hunting Knife — Genuine *Frontier* bone stag handle with 4 inch saber ground blade. The steel used in this knife is the finest in the world. It is stainless and is especially made to conform with Queen's rigid specifications. Will not rust or stain and because of Queen's secret tempering process, will stay sharp far longer than other knives. Complete in leather sheath made of top grain cowhide, saddle stitched with handsomely embossed design. Best selling large hunting knife.

No. 83 Hunting Knife — Same as above, except simulated pearl handle.

No. 92 — Same as above, except with amber handle.

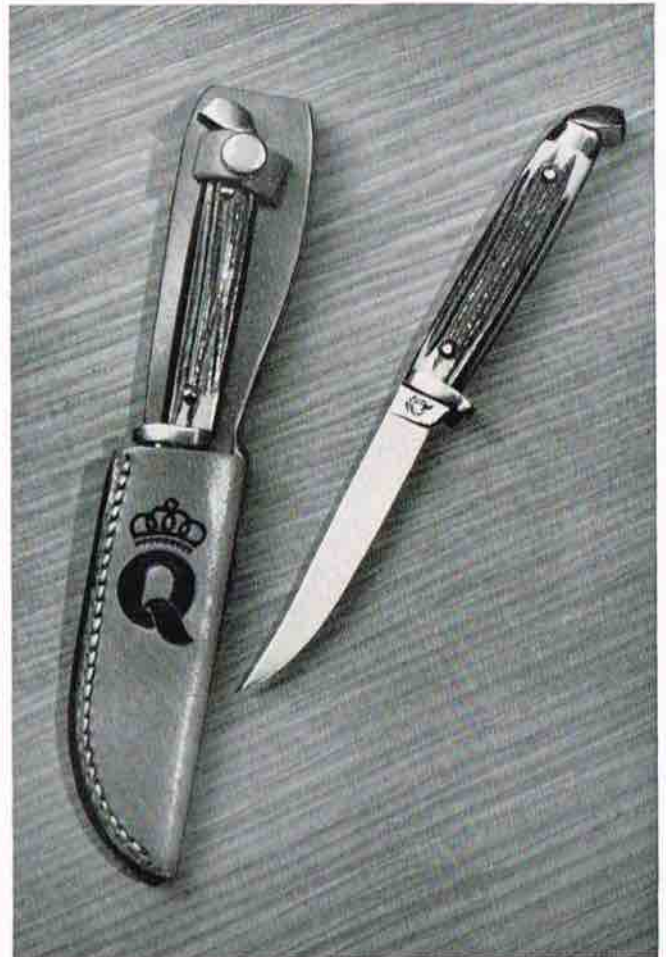
No. 93 — Same as above, except with brilliant red handle for hunter's safety.



All Queen Hunting Knives are made of the Finest Stainless Steel



No. 84 Hunting Knife — The steel used in these knives is the finest in the world. It is stainless and is especially made to conform with Queen's rigid specifications. Will not rust or stain and because of Queen's secret tempering process, will stay sharp far longer than other knives. Colorfully decorated leather handle with perma-gloss finish. 4 inch saber ground blade. Complete in leather sheath made of top grain cowhide, saddle stitched with handsomely embossed design.



No. 85 Finn or Trout Knife — Genuine *Frontier* bone stag handle with 3 inch flat ground blade. The steel used in this knife is the finest in the world. It is stainless and is especially made to conform with Queen's rigid specifications. Will not rust or stain and because of Queen's secret tempering process, will stay sharp far longer than any other knives. Most popular knife for fishing, hunting and all-purpose utility. Complete with leather sheath made of top grain cowhide, saddle stitched with handsomely embossed design. Best selling hunting knife in our line.

No. 86 Finn or Trout Knife — Same as above, except simulated pearl handle.

No. 91 — Same as above, except with amber handle.

No. 99—Same as above, except with brilliant red handle for hunter's safety.



All Queen Hunting Knives are made of the Finest Stainless Steel



No. 76 Fishing Knife — Genuine Formica Handle with 4 inch blade. Scaler on back of blade. The steel used in this knife is the finest in the world. It is stainless and is especially made to conform with Queen's rigid specifications. Will not rust or stain and because of Queen's secret tempering process will stay sharp far longer than other knives. Complete with leather sheath made of top grain cowhide, saddle stitched with handsomely embossed design.



No. 87 Expert Fishing Knife — Genuine *Frontier* bone stag handle with 4 1/4 inch blade. Scaler on back and scimitar for splitting. The steel used in this knife is the finest in the world. It is stainless and is especially made to conform with Queen's rigid specifications. Will not rust or stain and because of Queen's secret tempering process, will stay sharp far longer than other knives. Complete with leather sheath made of top grain cowhide, saddle stitched with handsomely embossed design.



All Queen Hunting Knives are made of the Finest Stainless Steel



No. 88 Combination Fishing Set — Genuine *Frontier* bone stag handles. The steel used in these knives is the finest in the world. It is stainless and is especially made to conform with Queen's rigid specifications. Will not rust or stain and because of Queen's secret tempering process, will stay sharp far longer than other knives. One Trout knife with 3 inch flat ground blade and one expert fishing knife with 4 1/4 inch blade. Both complete in one handsome double sheath made of top grain cowhide, saddle stitched, handtooled with floral design. Individually boxed.



No. 89 Hunting Knife — Genuine *Frontier* bone stag handle with 3 5/8 inch flat ground blade. The steel used in this knife is the finest in the world. It is stainless and is especially made to conform with Queen's rigid specifications. Will not rust or stain and because of Queen's secret tempering process, will stay sharp far longer than other knives. Complete in leather sheath made of top grain cowhide, saddle stitched with handsomely embossed design. A favorite knife for hunting and skinning wild game.



All Queen Hunting Knives are made of the Finest Stainless Steel



No. 90 Hunting Knife — Attractive multicolored handle. 4 inch blade. 7 $\frac{3}{4}$ inches overall. The steel used in this knife is the finest in the world. It is stainless and is especially made to conform with Queen's rigid specifications. Will not rust or stain and because of Queen's secret tempering process, will stay sharp far longer than other knives. Complete in leather sheath made of top grain cowhide, saddle stitched with handsomely embossed design.



No. 95 Hunting Knife — Genuine *Frontier* bone stag handle with 5 inch saber ground blade with blood groove, 9 $\frac{1}{2}$ inches overall. The steel used in this knife is the finest in the world. It is stainless and is especially made to conform with Queen's rigid specifications. Will not rust or stain and because of Queen's secret tempering process, will stay sharp far longer than other knives. Complete in leather sheath made of top grain cowhide, saddle stitched with handsomely embossed design. The hunting knife for big game.



All Queen Hunting Knives are made of the Finest Stainless Steel



No. 77 Hunting Knife — Genuine Frontier Bone stag handle. 5 inch large wide scimitar blade, 9½ inches overall. The steel used in this knife is the finest in the world. It is stainless and is especially made to conform with Queen's rigid specifications. Will not rust or stain and because of Queen's secret tempering process, will stay sharp far longer than other knives. Complete in leather sheath made of top grain cowhide, saddle stitched with handsomely embossed design. The hunting knife for big game.



No. 98 Skinning Knife — Genuine Frontier bone stag handle with 4 inch scimitar shaped flat blade. The steel used in this knife is the finest in the world. It is stainless and is especially made to conform with Queen's rigid specifications. Will not rust or stain and because of Queen's secret tempering process, will stay sharp far longer than other knives. Complete in leather sheath made of top grain cowhide, saddle stitched with handsomely embossed design. Sportsman's favorite.



No. KA79 Knife and Axe Combination — One pound double bit Utility Axe. 15 inch hickory handle. Finest quality steel. Handsome leather Axe sheath made of top grain cowhide, saddle stitched with embossed design. Sheath slotted for carrying on the belt. 4 inch saber ground blade Hunting Knife with genuine *Frontier* bone stag handle in leather sheath made of top grain cowhide, saddle stitched with handsomely embossed design. Hunting knife and sheath attach to axe sheath and axe handle which makes a fine Knife and Axe combination.

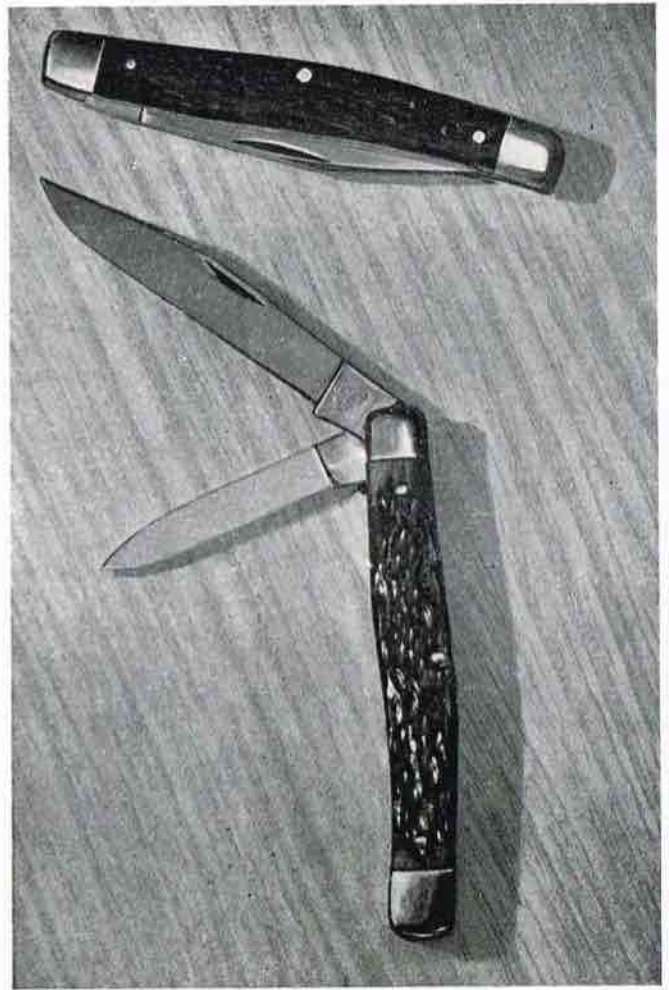
No. DBA 79 — Double bit one pound Utility Axe. 15 inch hickory handle. Finest quality steel. Complete with fine leather sheath made of top grain cowhide, saddle stitched with handsomely embossed design. Slot in sheath for carrying on the belt.



No. SBA78 — Single bit 1 3/4 pound Camp Axe. 16 inch hickory handle. Finest quality steel. Complete with leather sheath, saddle stitched and riveted. Slot in sheath for carrying on the belt.



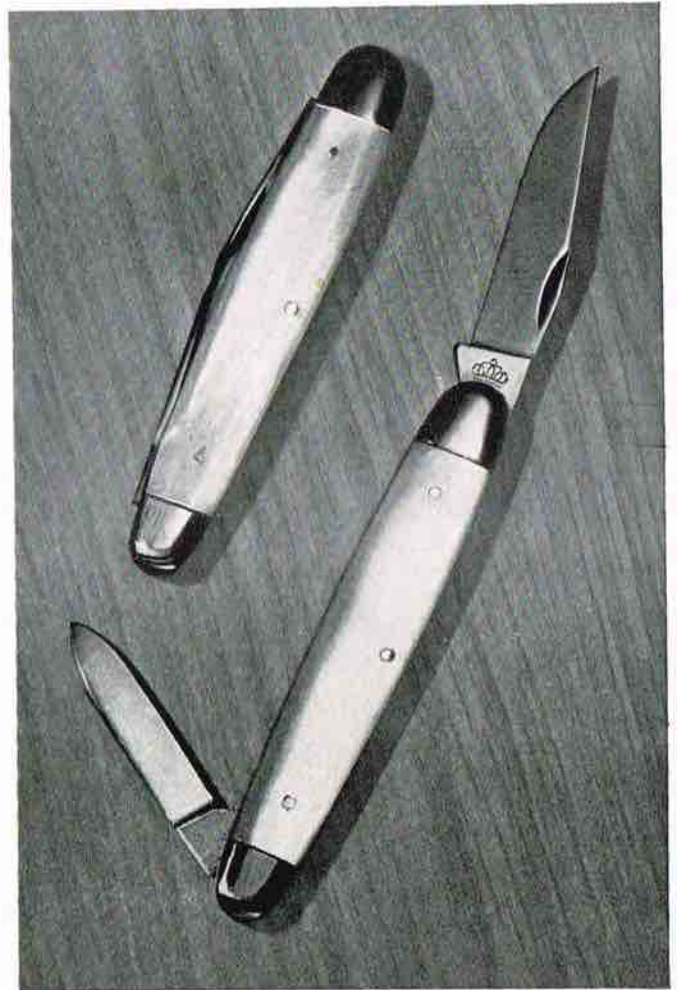
No. 1 Pruning or Hawkbill Pocket Knife — Rosewood handle. Brass linings, nickel silver finish. Complete with opening for leather thong. One 3-inch blade. $4\frac{1}{8}$ inches when closed. Sturdy, heavy-duty knife used by farmers, carpenters, electricians, etc.



No. 2 Serpentine Pattern — Two-blade pocket knife. Genuine bone stag handle. Double bolster, nickel silver finish with brass linings. One $2\frac{9}{16}$ -inch clip blade and one $2\frac{3}{4}$ -inch pen blade. $3\frac{1}{4}$ inches long when closed.



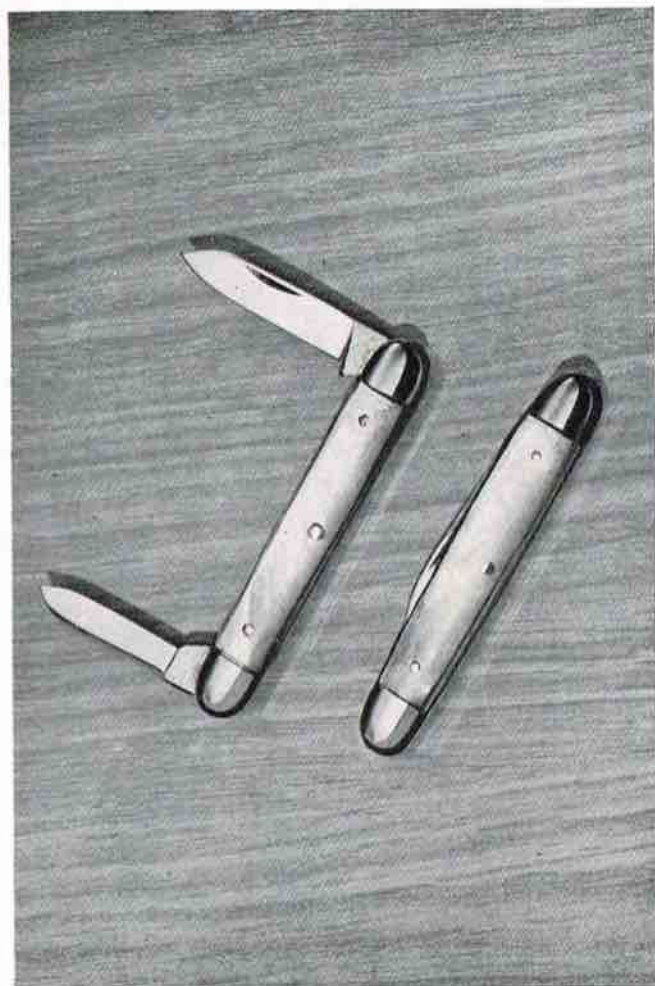
No. 3 Sleeveboard Pattern — Two-blade pen knife. Genuine bone stag handle. Double bolster, nickel silver finish with brass linings. One 2-inch clip blade and one 1-7/16-inch pen blade. 3-5/16 inches long when closed.



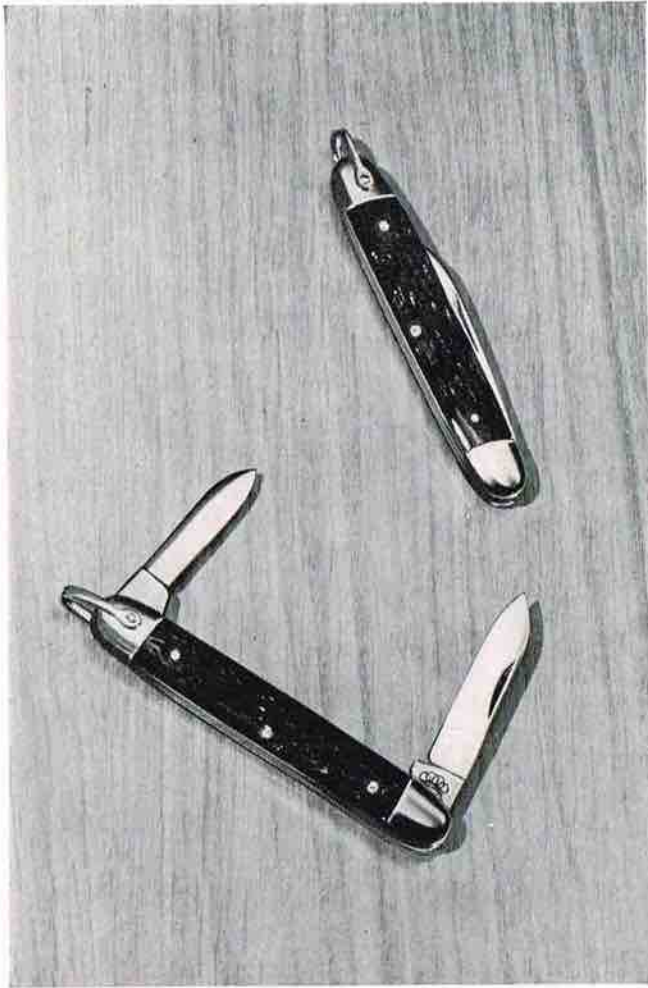
No. 4 Sleeveboard Pattern — Two-blade pen knife. Genuine Mother of Pearl handle. Double bolster, nickel silver finish with brass linings. One 2-inch clip blade and one 1-7/16-inch pen blade. 3-5/16 inches long when closed.



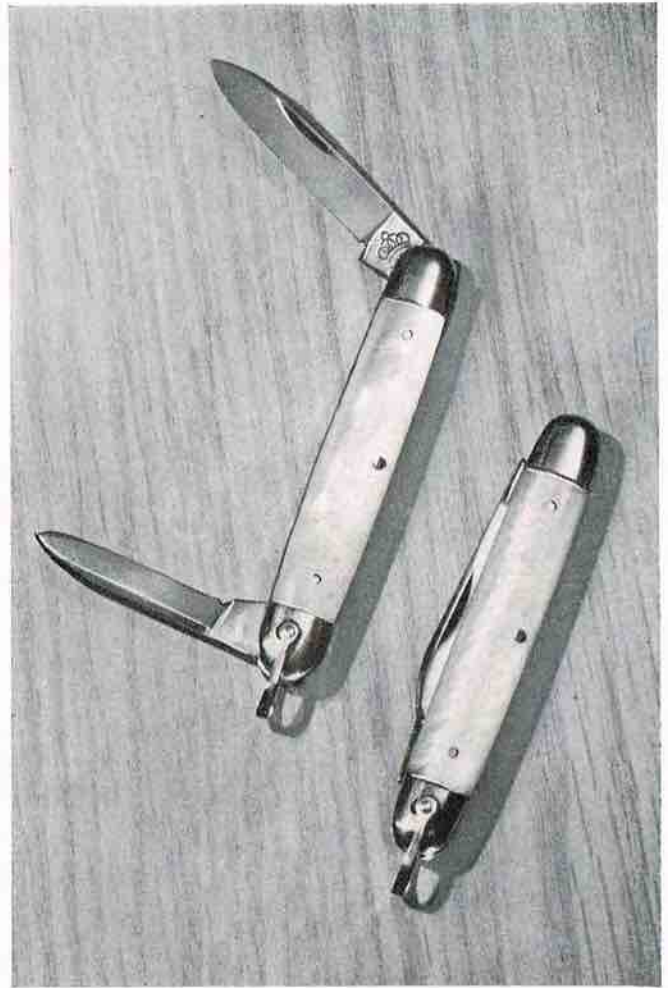
No. 5 Senator Pattern — Two-blade pen knife. Genuine bone stag handle. Double bolster, nickel silver finish with brass linings. One 1-7/16-inch spear blade and one 1-3/16-inch pen blade. 2½ inches long when closed.



No. 6 Senator Pattern — Two-blade pen knife. Genuine Mother of Pearl handle. Double bolster, nickel silver finish with brass linings. One 1-7/16-inch spear blade and one 1-3/16-inch pen blade. 2½ inches long when closed.



No. 7 Senator Pattern — Two-blade pen knife. Genuine bone stag handle with bale ring. Double bolster, nickel silver finish with brass linings. One 1-7/16-inch spear blade and one 1-3/16-inch pen blade. 2½ inches long when closed.



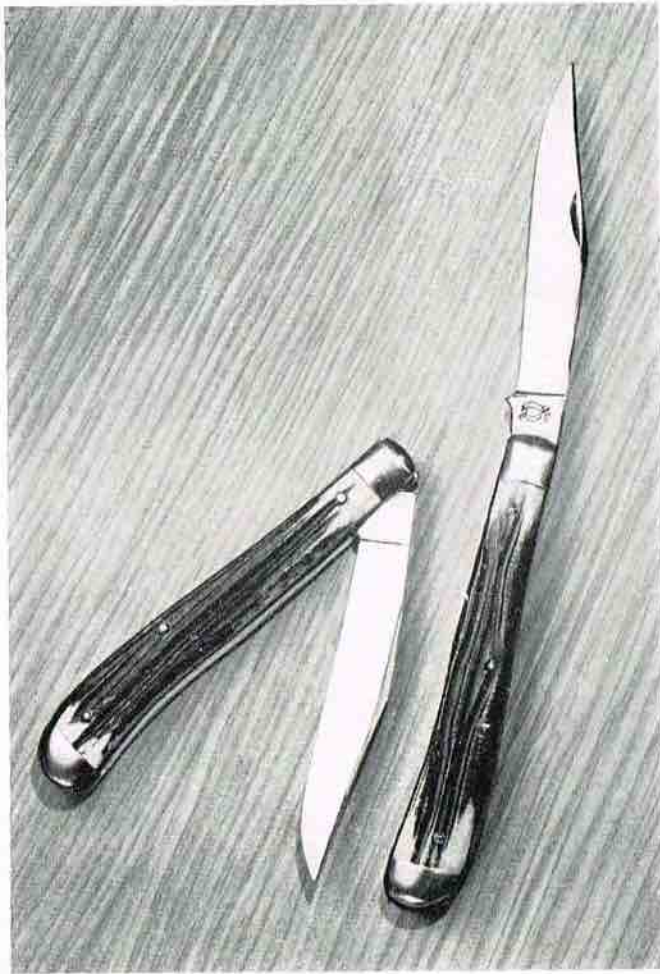
No. 8 Senator Pattern — Two-blade pen knife. Genuine Mother of Pearl handle with bale ring. Double bolster, nickel silver finish with brass linings. One 1-7/16-inch spear blade and one 1-3/16-inch pen blade. 2½ inches long when closed.



No. 9 Stockmen's Pattern — Three blade pocket knife. Genuine *Frontier* bone stag handle. Double bolster, nickel silver finish with brass linings. One 3 inch clip blade, one 2 inch spey blade and one 2 1/8 inch sheep foot blade. 4 inches long when closed.



No. 10 Heavy Duty Pattern — Two blade jack knife. Genuine *Frontier* bone stag handle. Double bolster, brass lined, nickel silver finish. One clip blade 2-11/16 inches long and one pen blade 2-3/16 inches long. 3-11/16 inches long when closed. The farmer's favorite.



No. 11 Switch Pattern — Single blade heavy duty pocket knife. Genuine *Frontier* bone stag handle. Double bolster, brass lined, nickel silver finish. $3 \frac{5}{8}$ inch clip blade. $4 \frac{1}{8}$ inches long when closed. A favorite of sportsmen and fishermen as well as for general use.

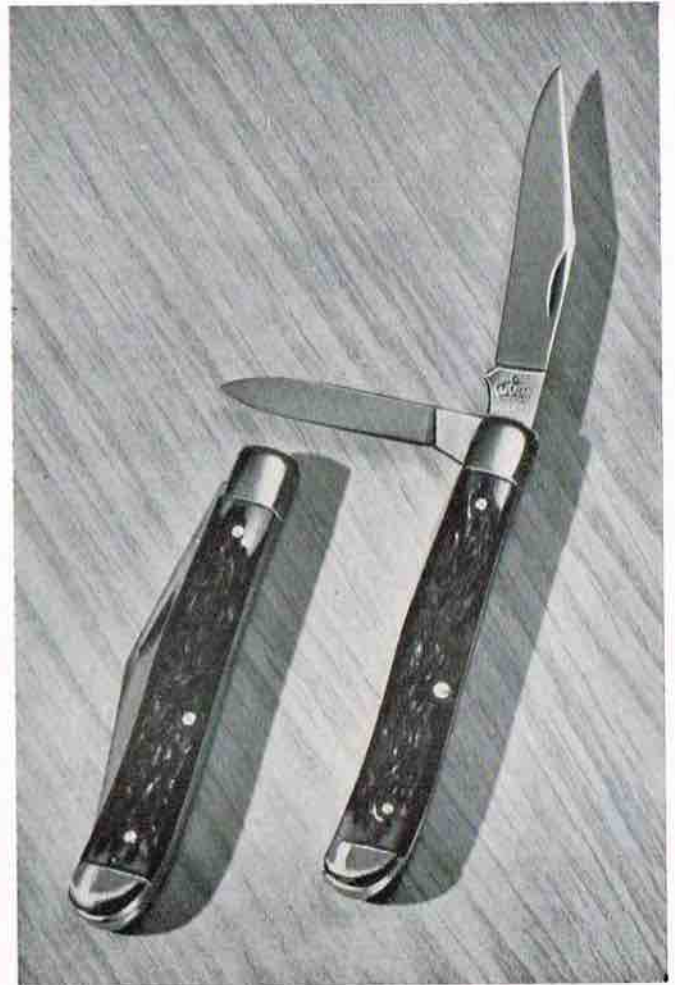


No. 12 Switch Pattern — Single-blade heavy duty pocket knife. Simulated pearl handle. Double bolster, brass lined, nickel silver finish. $3 \frac{5}{8}$ inch clip blade. $4 \frac{1}{8}$ inches long when closed. A favorite of sportsmen and fishermen as well as for general use.



No. 13 Switch Pattern — Single-blade heavy duty pocket knife. Amber handle. Double bolster, brass lined, nickel silver finish. $3\frac{5}{8}$ inch clip blade. $4\frac{1}{8}$ inches long when closed. A favorite of sportsmen and fishermen as well as for general use.

No. 41 — Same as above with brilliant red handle.



No. 14 Dogleg Pattern — Two-blade small jack knife. Genuine bone stag handle. Double bolster, brass lined, nickel silver finish. One $2\frac{1}{8}$ -inch clip blade and one $1\frac{7}{16}$ -inch pen blade. $2\frac{3}{4}$ inches long when closed. One of our most favored patterns.



No. 15 Congress Pattern — Two-blade pocket knife. Genuine bone stag handle. Double bolster, brass lined, nickel silver finish. One 2-inch sheepsfoot blade and one 1 ½ inch pen blade. 3 ½ inches long when closed. Always a leading number.



No. 16 Serpentine Pattern — Three blade pocket knife. Genuine *Frontier* bone stag handle. Double bolster, nickel silver finish with brass linings. One 2-9/16 inch clip blade, one 1 7/8 inch sheepsfoot blade and one 1-11/16 inch pen blade. 3 ¼ inches long when closed. A stable number.



No. 17 Amber Dogleg Pattern — Two blade small jack knife. Amber handle. Double bolster, brass lined, nickel silver finish. One $2\frac{1}{8}$ inch clip blade and one $1\frac{7}{16}$ inch pen blade. $2\frac{3}{4}$ inches long when closed. One of our most favored patterns.



No. 18 Spear Point Special — Two blade jack knife. Genuine *Frontier* bone stag handle. Double bolster, brass lined, nickel silver finish. One spear point blade is $2\frac{11}{16}$ inches long and one pen blade is $2\frac{3}{16}$ inches long. $3\frac{11}{16}$ inches long when closed. Textile workers and mariners prefer this number.



No. 19 Folding Fishing Knife complete with disgorgers and scaler. Genuine bone stag handle. Double bolster, brass lined, nickel silver finish. Very sturdily constructed. Large clip blade $3\frac{5}{8}$ inches long. Disgorger, scaler and bottle opener blade $3\frac{5}{8}$ inches long. Overall size 5 inches long. A standard pocket knife for fishermen and campers.



No. 20 Folding Outdoors Knife—Very sturdy construction. Genuine bone stag handle. Double bolster, brass lined, nickel silver finish. One large clip blade $3\frac{5}{8}$ inches long. Knife when closed 5 inches overall. A popular number.



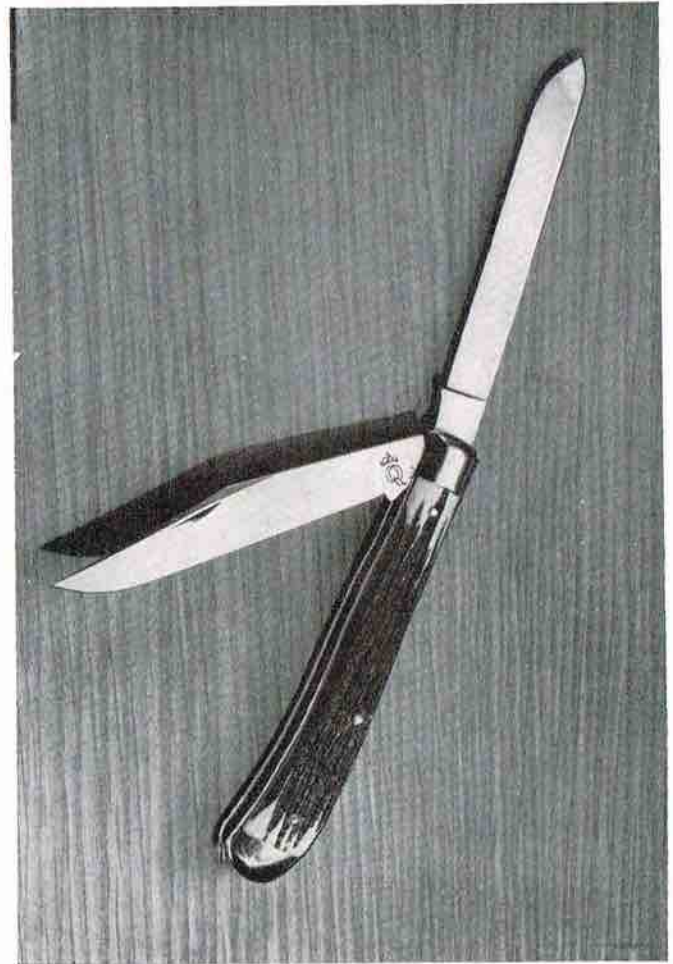
No. 21 Spear Point Pen Pattern—Two-blade pen knife. Genuine bone stag handle. Double bolster, nickel silver finish with brass linings. One 2-inch spear point blade and one 1-7/16 inch pen blade. 3-5/16 inches long when closed.



No. 22 Barlow Knife, Clip Pattern—Our Barlow Knife has always enjoyed top popularity. Genuine bone stag handle. Heavy duty bolster. Cleanly polished inside of handle. One large clip blade 2-5/16 inches long and one pen blade 1 7/8 inches long. 3 1/2 inches overall when closed.



No. 23 Barlow Knife, Spear Point Pattern — Our Barlow Knife has always enjoyed top popularity. Genuine bone stag handle. Heavy duty bolster. Cleanly polished inside of handle. One large spear point blade 2-5/16 inches long and one pen blade 1 7/8 inches long. 3 1/2 inches overall when closed.



No. 24 Trapper's Pattern — Genuine *Frontier* bone stag handle. Sturdily constructed. Double bolster, nickel silver finish with brass linings. One 3 5/8 inch clip blade; one spey blade 3 5/8 inches long. 4 inches long when closed. Standard pattern.

No. 30 — Same as above, except with amber handle.



No. 25 Jet Push Button Pattern with Safety Lock—Double bolster, nickel silver finish with brass linings. Sturdily constructed. One heavy duty large clip blade 3-15/16 inches long. 5 inches long when closed.



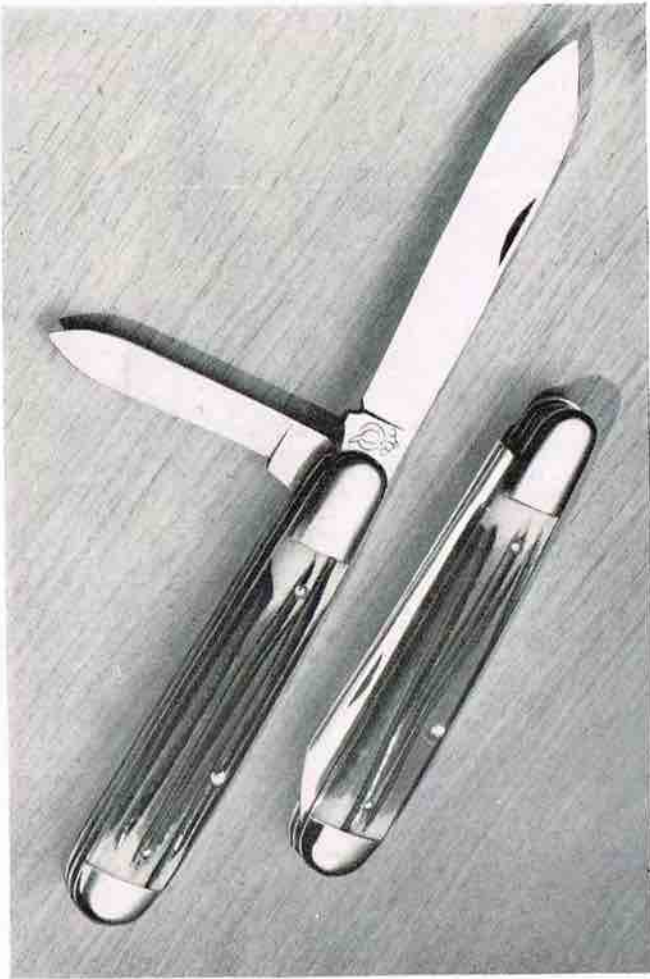
No. 26 Serpentine Pattern—Three blade pocket knife. Genuine Frontier bone stag handle. Double bolster, nickel silver finish with brass linings. One 2-9/16 inch clip blade, one 1 7/8 inch spey blade and one 1 7/8 inch sheep's foot blade. 3 1/4 inches long when closed.



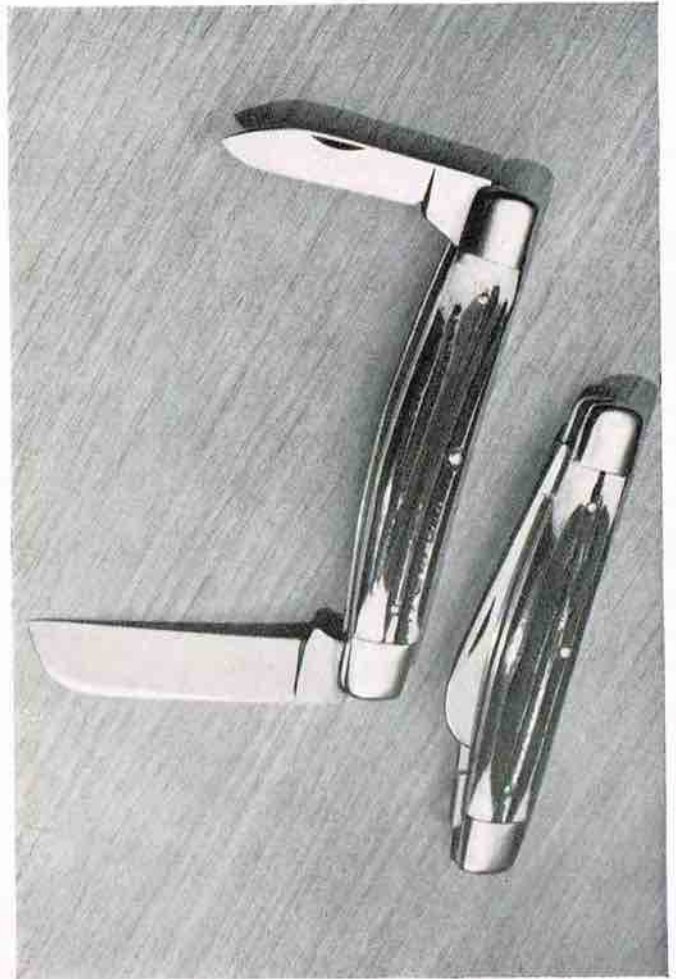
No. 27 Sheepsfoot Barlow Knife — Our Barlow Knife has always enjoyed top popularity. Genuine bone stag handle. Heavy duty pattern. Cleanly polished inside of handle. One large Sheepsfoot blade $2\frac{5}{8}$ inches long and one pen blade $1\frac{7}{8}$ inches long. $3\frac{1}{2}$ inches overall when closed.



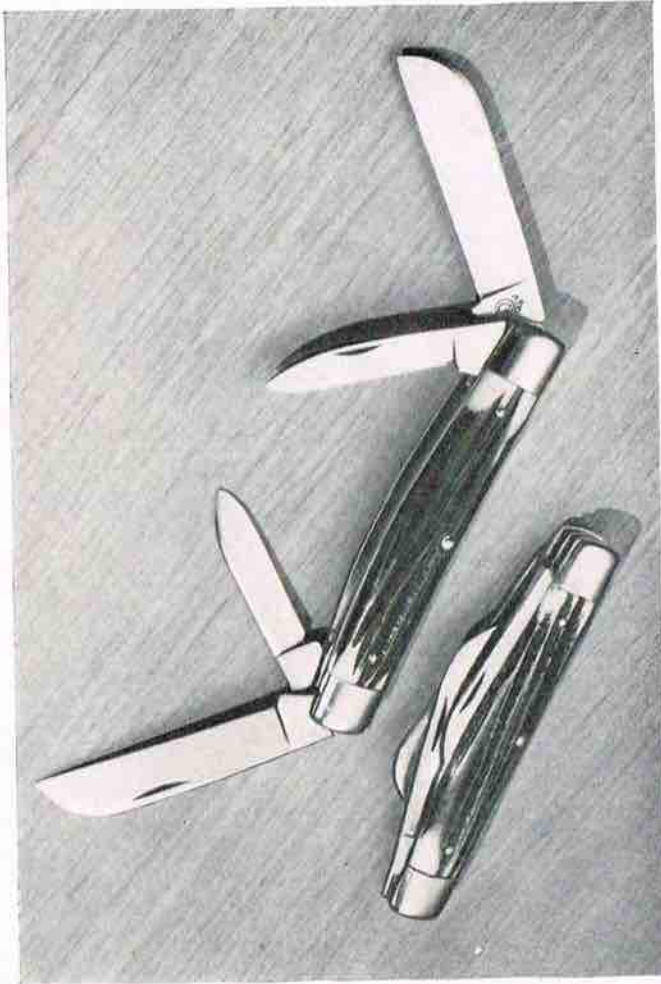
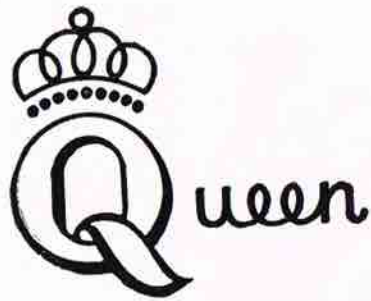
No. 28 Large Farmer's Knife, Clip Pattern — Large 2 blade jack knife. Genuine Frontier bone stag handle. Double bolster, brass linings, nickel silver finish. Large clip blade is $3\frac{1}{2}$ inches long and pen blade $2\frac{3}{8}$ inches long. $4\frac{1}{2}$ inches overall when closed.



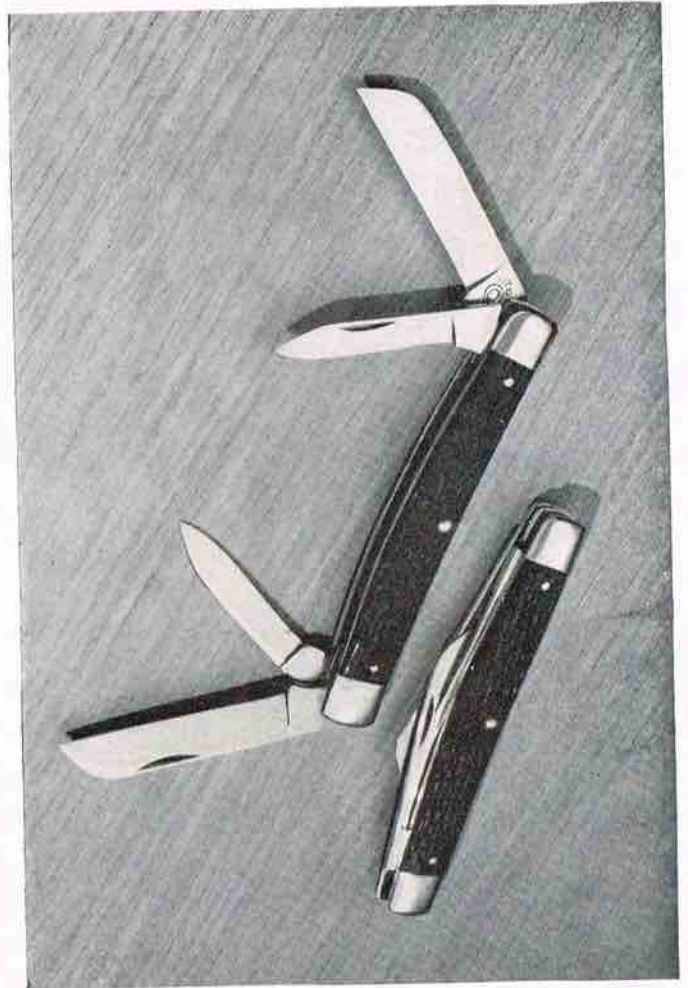
No. 29 Large Farmer's Knife, Spear Point Pattern—Large 2 blade jack knife. Genuine Frontier bone stag handle. Double bolster, brass linings, nickel silver finish. Large spear point blade is $3\frac{1}{2}$ inches long and pen blade $2\frac{3}{8}$ inches long. $4\frac{1}{2}$ inches overall when closed.



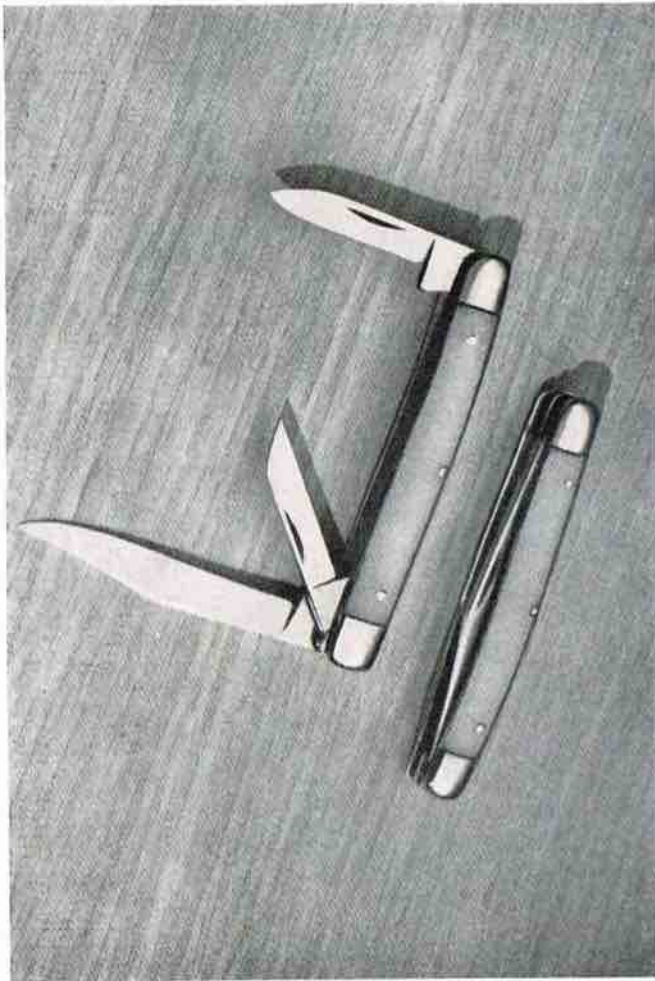
No. 31 Large two blade Congress Pattern—Genuine Frontier bone stag handle. Made of high carbon finest selected tool steel. Double bolster, nickel silver finish with brass linings. $2\frac{1}{2}$ inch sheepfoot blade and a 2 inch pen blade. 4 inches long when closed.



No. 32 Large four blade Congress Pattern—Genuine Frontier bone stag handle. Made of high carbon finest selected tool steel. 2½ inch Sheep's foot blade on each end and also a 2 inch pen blade at each end. 4 inches overall when closed. A favorite knife of carpenters and skilled workmen.



No. 33 Small Four Blade Congress Pattern—Genuine bone stag handle. Double bolster, brass lining, nickel silver finish. 2 inch sheep's foot blade at each end and 1¾ inch pen blade at each end. 3½ inches overall when closed.



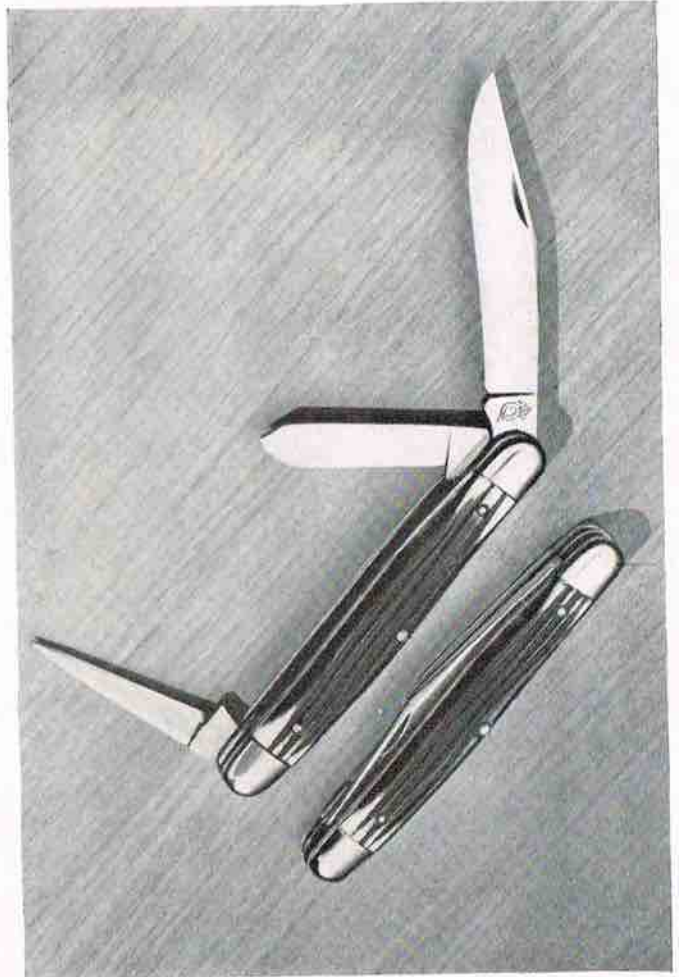
No. 34 Small Three Blade Serpentine Pattern—Amber handle. Double bolster, brass lined, nickel silver finish. 2 inch clip blade and $1\frac{5}{8}$ inch sheep's foot blade and $1\frac{5}{8}$ inch pen blade. $2\frac{5}{8}$ inches long when closed. An outstanding number.



No. 35 Small Three Blade Serpentine Pattern—Stagged handle. Double bolster, brass lined, nickel silver finish. 2 inch clip blade and $1\frac{5}{8}$ inch sheep's foot blade and $1\frac{5}{8}$ inch pen blade. $2\frac{5}{8}$ inches long when closed.



No. 36 One Blade Lock Pattern — Genuine Frontier bone stag handle. Made of high carbon finest selected tool steel. Brass lined, nickel silver finish. One large clip blade $3\frac{5}{8}$ inches long. $4\frac{1}{2}$ inches long overall when closed. Blade of knife locks rigidly when opened.



No. 37 Stockmen's Belt Punch Pattern — Large three blade knife. Genuine Frontier bone stag handle. Made of high carbon finest selected tool steel. Double bolster, nickel silver finish with brass linings. One 3 inch clip blade, one $1\frac{7}{8}$ inch spey blade, and one 2 inch leather belt punch blade. 4 inches long when closed.



No. 38 Jumbo One Blade Pattern—
Genuine Frontier bone stag handle. Made of high carbon finest selected tool steel. Saber ground, heavy duty single blade knife. Double bolster, brass linings, nickel silver finish. One large clip blade $4\frac{1}{4}$ inches long. $5\frac{1}{4}$ inches long overall when closed.



No. 39 Heavy Duty Big Pocket Knife —
Genuine Frontier bone stag handle. $5\frac{1}{4}$ inches overall when closed. Double bolster, brass linings. Pocket blade $3\frac{3}{4}$ inches in length, saber ground. Skinning blade $3\frac{7}{8}$ inches in length, flat ground. The steel used in this knife is the finest in the world. It is stainless and is especially made to conform with Queen's rigid specifications. Will not rust or stain and because of Queen's secret tempering process, it will stay sharp far longer than other knives.



No. 42 Small Two Blade Serpentine Pattern—Amber handle. Double bolster, brass lined, nickel silver finish. 2 inch clip blade and 1 $\frac{5}{8}$ inch pen blade, 2 $\frac{5}{8}$ inches long when closed. An outstanding number.



No. 43 Small Two Blade Serpentine Pattern—Stagged handle. Double bolster, brass lined, nickel silver finish. 2 inch clip blade and 1 $\frac{5}{8}$ inch pen blade. 2 $\frac{5}{8}$ inches long when closed.



HAIR CLIPPERS



No. Q0007—Small hand hair clipper for fine work.



No. Q0008—Large professional hand hair clipper for hair cutting and barbering.



Electric Hair Clipper
Works on either electric current.



No. 219—7½-inch Professional Barber Shear—Electric furnace hot forged steel. Tempered and Rockwell tested to our high standards. Fully polished nickel finish. Holds keen cutting edge. Perfectly balanced.



No. 220—8-inch Bent Trimmer Shear—Ideal for dressmaking. Full nickel finish. Made of electric furnace hot forged steel. Tempered and Rockwell tested to our high standards. Holds keen cutting edge.



No. 221—7-inch Straight Heavy Trimmer Shear—For heavy duty cutting and household use. Full nickel finish. Made of electric furnace hot forged steel. Tempered and Rockwell tested to our high standards. Holds keen cutting edge.



No. 222—8-inch Straight Heavy Trimmer Shear—For extra heavy cutting and household use. Full nickel finish. Made of electric furnace hot forged steel. Tempered and Rockwell tested to our high standards. Holds keen cutting edge.



No. 223—6-inch Light Trimmer Shear
—For dressmaking and household use. Full nickel finish. Made of electric furnace hot forged steel. Tempered and Rockwell tested to our high standards. Holds keen cutting edge.



No. 224—7-inch Light Trimmer Shear—
For dressmaking and household use. Full nickel finish. Made of electric furnace hot forged steel. Tempered and Rockwell tested to our high standards. Holds keen cutting edge.



No. 225—8-inch Light Trimmer Shear

—For dressmaking and household use. Full nickel finish. Made of electric furnace hot forged steel. Tempered and Rockwell tested to our high standards. Holds keen cutting edge.

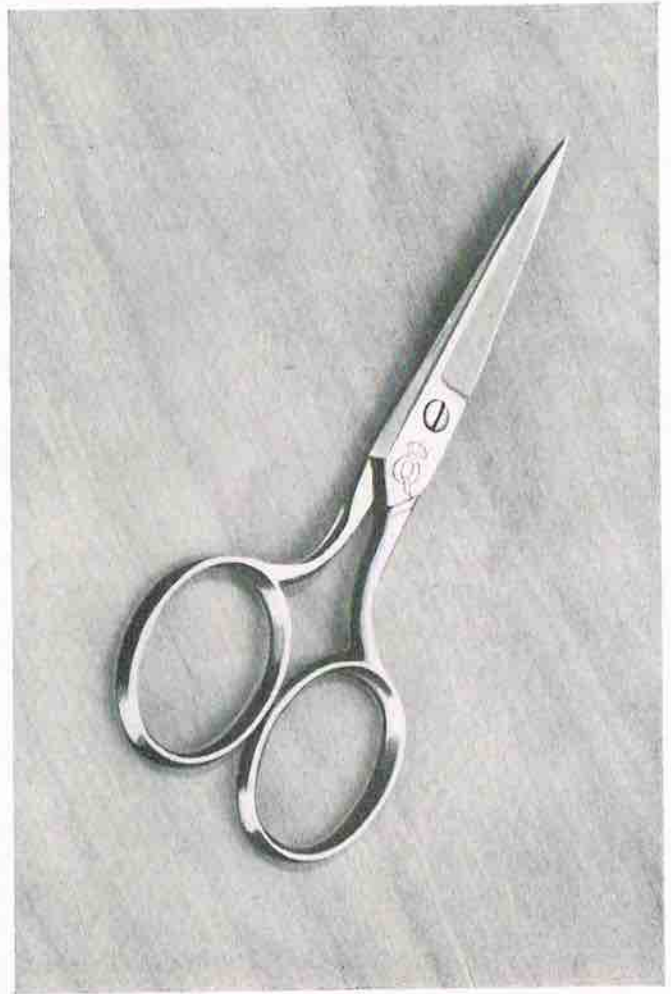


No. 226—6-inch Embroidery Trimmer Scissors

—For embroidery and other delicate work. Two sharp points. Full nickel finish. Made of electric furnace hot forged steel. Tempered and Rockwell tested to our high standards. Holds keen cutting edge.



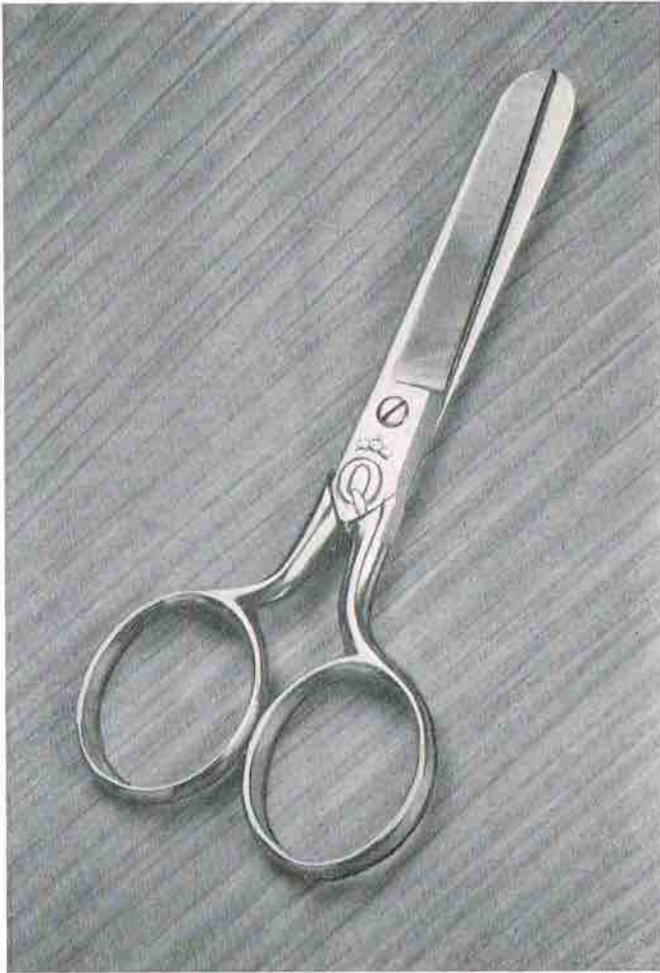
No. 227—5-inch Embroidery Trimmer Scissors—For embroidery and other delicate work. Two sharp points. Full nickel finish. Made of electric furnace hot forged steel. Tempered and Rockwell tested to our high standards. Holds keen cutting edge.



No. 228—4-inch Embroidery Trimmer Scissors—For embroidery and other delicate work. Two sharp points. Full nickel finish. Made of electric furnace hot forged steel. Tempered and Rockwell tested to our high standards. Holds keen cutting edge.



Queen



No. 229 4-inch Pocket Scissors — For Store clerks, Mill workers, school and household use. Two blunt points. Full nickel finish. Made of electric furnace hot forged steel. Tempered and Rockwell tested to our high standards. Holds keen cutting edge.



No. 231 Buttonhole Scissors — For making buttonholes in any type of garment. Adjustable screw and set nut can be regulated for any size or length buttonhole desired. Indispensable for the dressmaker or the tailor either in the home or the shop.



Hand Hammered Rough Finish Kitchen Line — Ground out of whole stock high carbon steel. Full tang. Rosewood handles. Very strong rivets. We especially make these knives for heavy duty and we recommend them to you as excellent value. Reading from top to bottom they are as follows:

No. S-8 Slicing Knife.....	8 inch blade
No. B-8 Butcher Knife.....	8 inch blade
No. B-7 Butcher Knife.....	7 inch blade
No. B-6 Butcher Knife.....	6 inch blade
No. BO6 Boning Knife.....	6 inch blade
No. B-4 Butcher Knife.....	4 inch blade
No. P-3 Paring Knife.....	3 inch blade
No. 200 Boning Knife, Mirror Polished Finish.....	6 inch blade
No. 205 Paring Knife, Mirror Polished Finish.....	3 inch blade



FORMICA LINE — The steel used in these knives is the finest in the world. It is stainless and is especially made to conform with Queen's rigid specifications. Will not rust or stain and because of Queen's secret tempering process, they will stay sharp far longer than other knives. New solid piece construction makes it impossible for any food particles to lodge in any part of these knives. Formica handles are impervious to heat, fire, water and will give very long life. Beautifully designed and scientifically balanced. Surgical grind. Reading from top to bottom as follows:

No. S-410 Ham & Roast Beef Slicer.....	10 inch blade
No. FC-400 French Cook Knife.....	8 inch blade
No. S-401 Slicer.....	8 inch blade
No. BK-409 Bread Knife.....	8 inch blade
No. B-408 Carver.....	8 inch blade
No. B-407 Carver.....	7 inch blade
No. B-406 Carver.....	6 inch blade
No. CF-411 Carving Fork.....	9 inch fork
No. U-401 Steak Knife.....	4-11/16 inch blade
No. BO-404 Boning & Scaling Knife.....	4 inch blade
No. P-403 Paring Knife.....	3 inch blade
No. P-403sh Paring Knife.....	2 1/4 inch blade



FINEST STAINLESS STEEL



FORMICA STEAK SET

No. S406 — 6 Formica Steak Knives individually set in a beautiful solid walnut box, velveteen lined.

No. S404 — Same as above, except contains 4 Formica Steak Knives.

No. S408 — Same as above, except contains 8 Formica Steak Knives.



FINEST STAINLESS STEEL



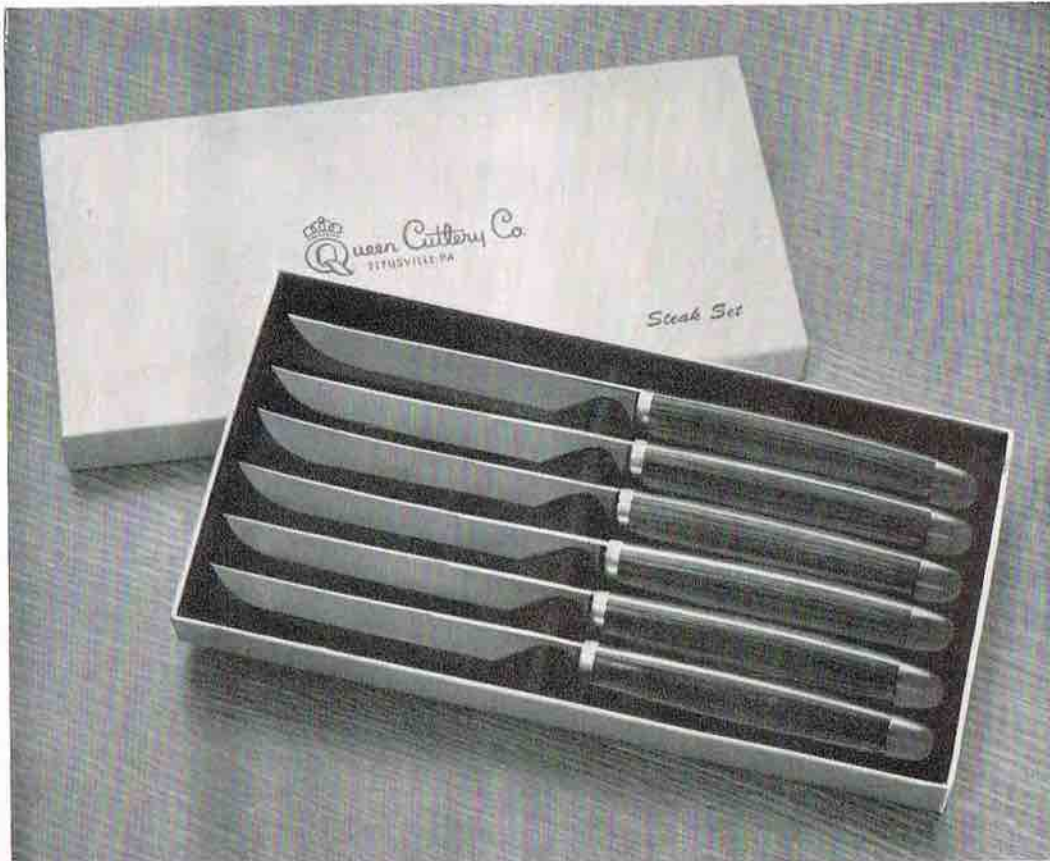
No. FKR 404 — Solid Walnut Knife Set, containing a 7 inch Carver, 8 inch French Cook, 8 inch Slicer and 6 inch Carver from our Formica line. It may be laid flat or hung on wall. Individual slots and magnets hold each knife in place firmly. Individually packed.

No. S-502 — 2 Piece Formica Steak Carving Set. Formica Carving Fork and Formica Carver, individually set in an attractive box, lined with sateen.





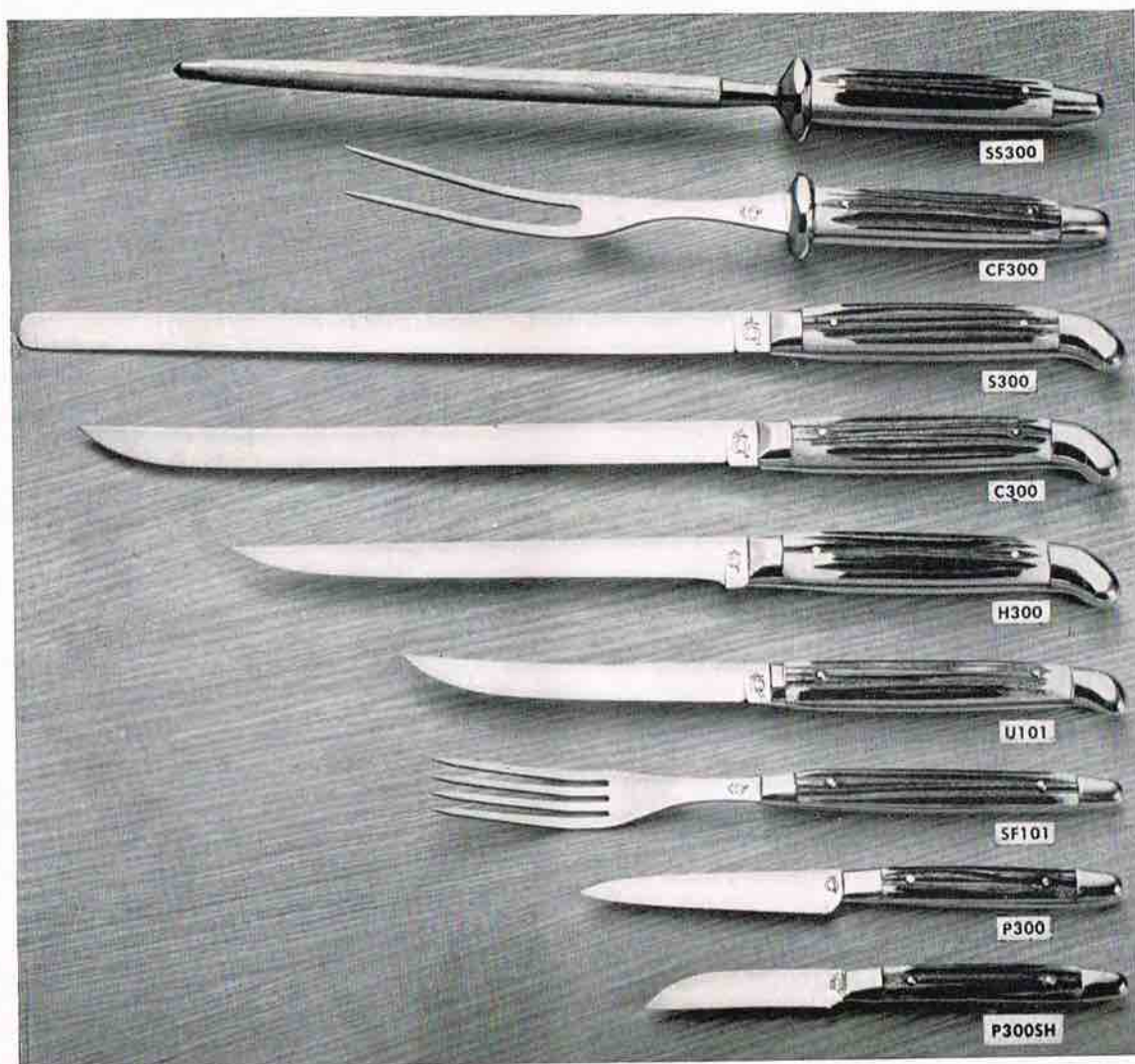
FINEST STAINLESS STEEL



No. F-606 Formica Steak Set — 6 Formica Steak Knives individually set in an attractive lined gift box.

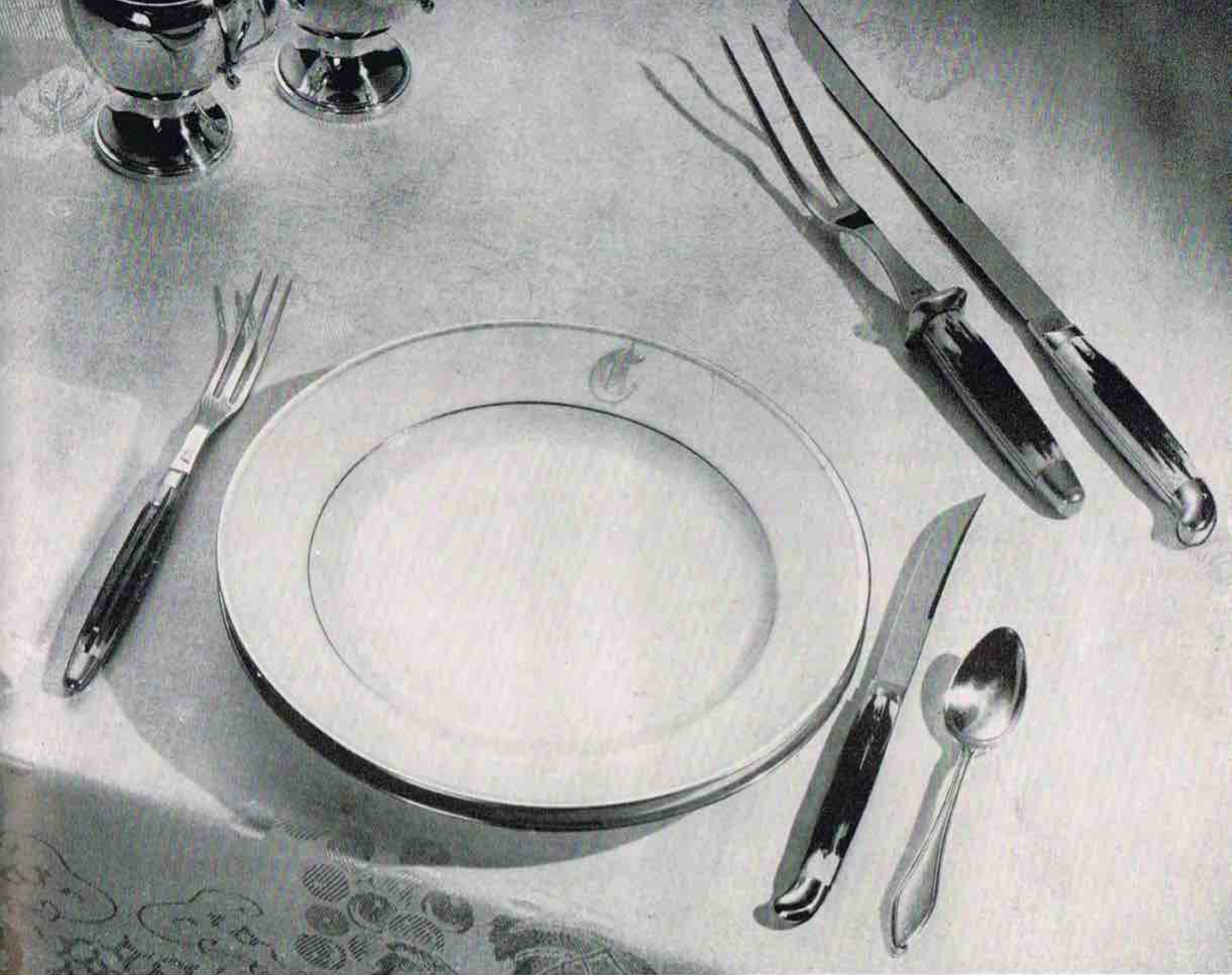
No. F-604 — Same as above, except contains 4 Formica Steak Knives.

No. F-608 — Same as above, except contains 8 Formica Steak Knives.



DE LUXE MATCHED TABLE LINE — We consider this line our finest creation. The steel used in these knives is the finest in the world. It is stainless and is especially made to conform with Queen's rigid specifications. Will not rust or stain and because of Queen's secret tempering process, they will stay sharp far longer than other knives. Solid piece construction makes it impossible for any food particles to lodge in any part of the knives. The Genuine Bone Stag handles mean eternal handle life and best of all hand washing will not mar or dull the appearance of these handles but rather they improve with age. Scientifically designed and balanced to fit comfortably in the hand they make carving and eating a more delightful pleasure. Reading from top to bottom as follows:

No. SS300 Sharpening Steel	12 ½ inch steel
No. CF300 Carving Fork	10 ½ inch fork
No. S300 Slicer	10 inch slicing knife
No. C300 Carver	9 inch carving knife
No. H300 Handy Knife	6 ¾ inch blade
No. U101 Individual steak knife	4 ¼ inch blade
No. SF101 Matching steak fork	9 inch fork
No. P300 Paring Knife	3 inch blade
No. P300sh Paring Knife	2 ¼ inch blade



Queen Table Cutlery adds grace and charm to your table and makes carving and eating a more delightful pleasure



DELUXE MATCHED

Table Cutlery Chests

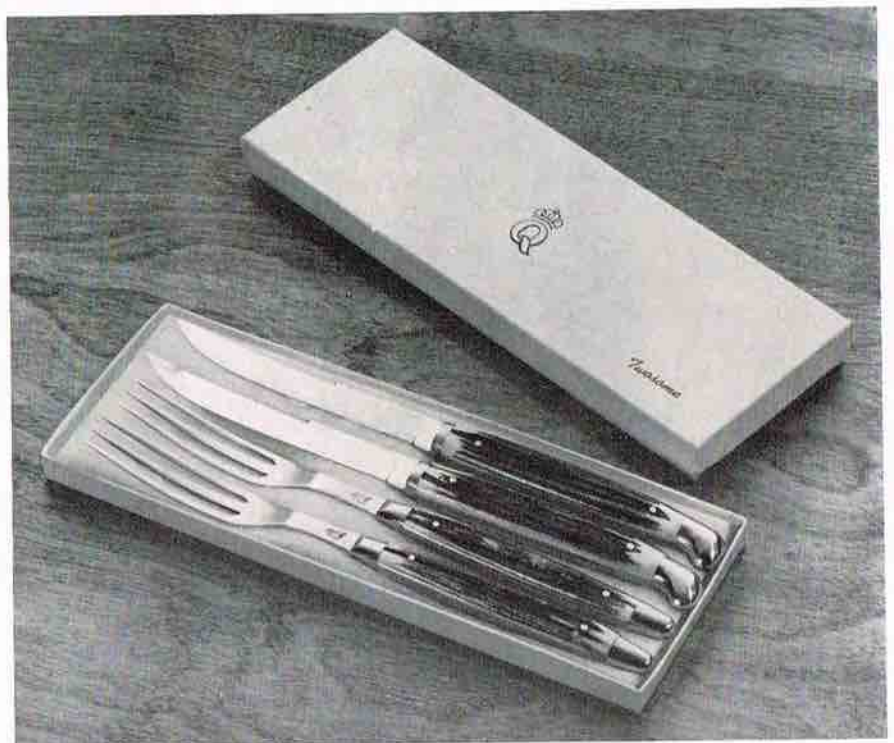


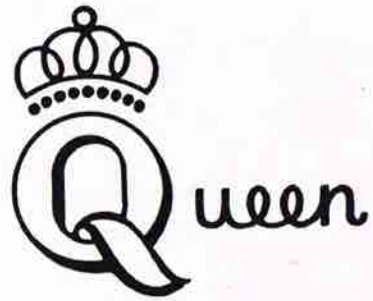
FINEST STAINLESS STEEL



No. 5102 "Steak Duet"—
Two De Luxe Steak Knives in
attractive gift box.

No. SF103 "Twosome"—
Two De Luxe Steak Knives and
two matching De Luxe Steak
Forks in attractive gift box.
Or four knives or four forks.





FINEST STAINLESS STEEL



No. S106 De Luxe Steak Set — Six De Luxe Steak Knives individually set in a beautiful solid walnut case lined with velveteen. This is by far the biggest selling number in our entire line.

No. S104 — Same as above, except contains 4 De Luxe Steak Knives.



FINEST STAINLESS STEEL



No. 5108 De Luxe Steak Set— Eight De Luxe Steak Knives individually set in a beautiful solid walnut case lined with velveteen.



FINEST STAINLESS STEEL



No. SF108 De Luxe Knife and Fork Set— Eight De Luxe Steak Knives and eight matching De Luxe Steak Forks individually set in a beautiful solid walnut case lined with velveteen.

No. SF106— Same as above, except contains 6 De Luxe Steak Knives and Forks.

No. SF104— Same as above, except contains 4 De Luxe Steak Knives and Forks.



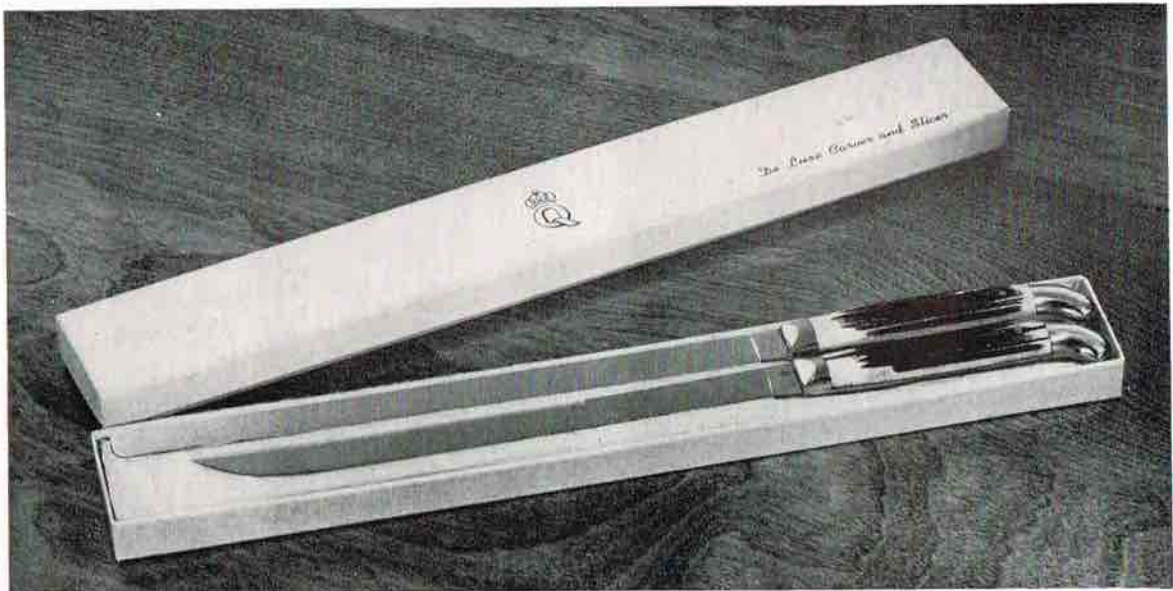
FINEST STAINLESS STEEL



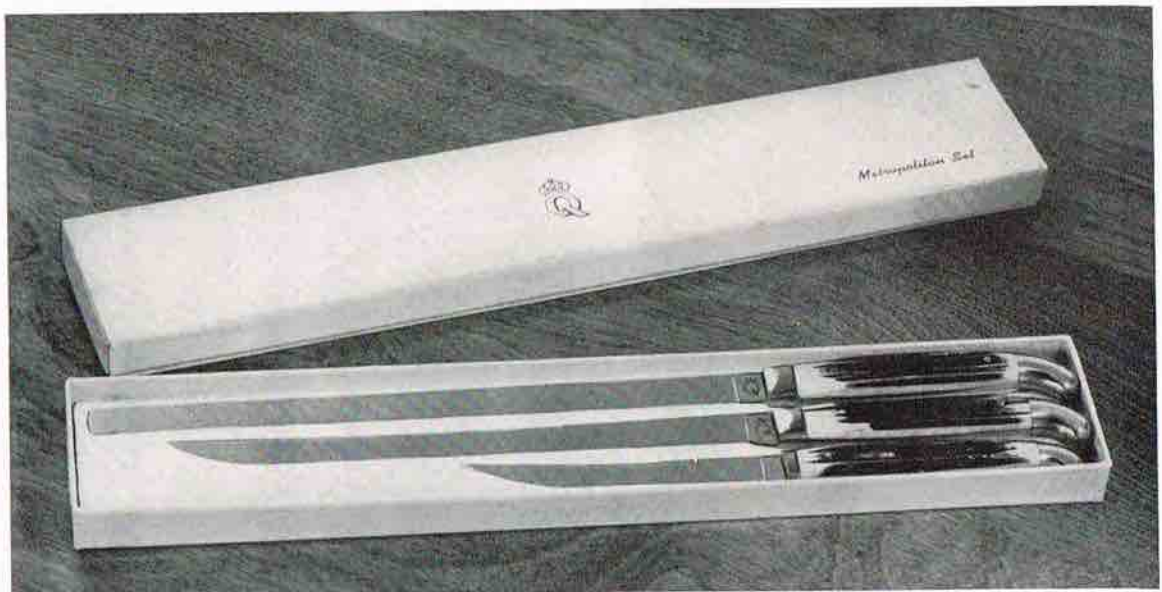
No. SCF118 "Family Steak Set" — Six De Luxe Steak Knives with matching De Luxe Carving Fork and matching De Luxe Handy Knife. Individually set in beautiful solid walnut case lined with velveteen. Created especially for steak lovers.



FINEST STAINLESS STEEL

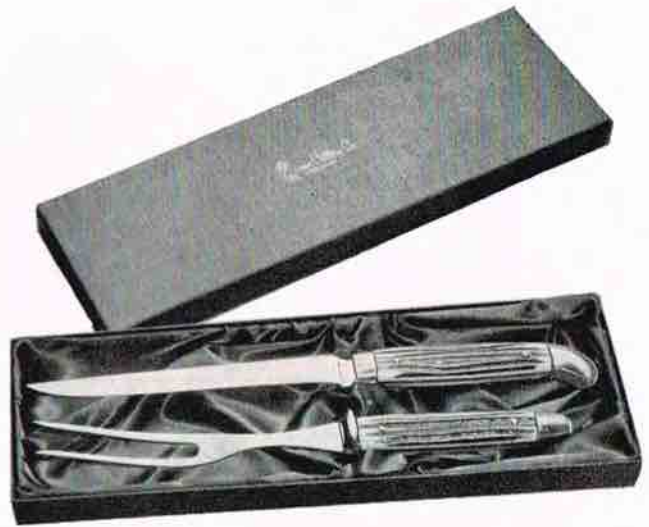


No. CS502 De Luxe Carver and Slicer Set — 9 inch De Luxe Carver and 10 inch De Luxe Slicer in attractive gift box.



No. CSS503 Metropolitan Set — 9 inch De Luxe Carver, 10 inch De Luxe Slicer and De Luxe Steak Knife in attractive gift box.

No. S602 2 Piece De Luxe Steak Carving Set— De Luxe Carving Fork and De Luxe Steak Carver. Individually set in attractive gift box lined with sateen.



No. C702 2 piece De Luxe Carving Set—9 inch Carver and matching De Luxe Carving Fork individually set in beautiful solid walnut case lined with velveteen.



No. C703 3 piece De Luxe Carving Set—9 inch De Luxe Carver, matching De Luxe Carving Fork and matching De Luxe Sharpening Steel individually set in beautiful walnut case lined with velveteen.





No. C703S 3 piece De Luxe Carving Set—9 inch De Luxe Carver, 10 inch De Luxe Slicer and matching De Luxe Carving Fork individually set in beautiful solid walnut case lined with velveteen.

No. C704 4 piece De Luxe Carving Set—9 inch De Luxe Carver, 10 inch De Luxe Slicer, matching De Luxe Carving Fork and matching De Luxe Sharpening Steel individually set in beautiful solid walnut case lined with velveteen.




S-702 De Luxe Steak Carving Set—De Luxe Carving Fork and De Luxe Steak Carver individually set in beautiful solid walnut chest lined with velveteen.



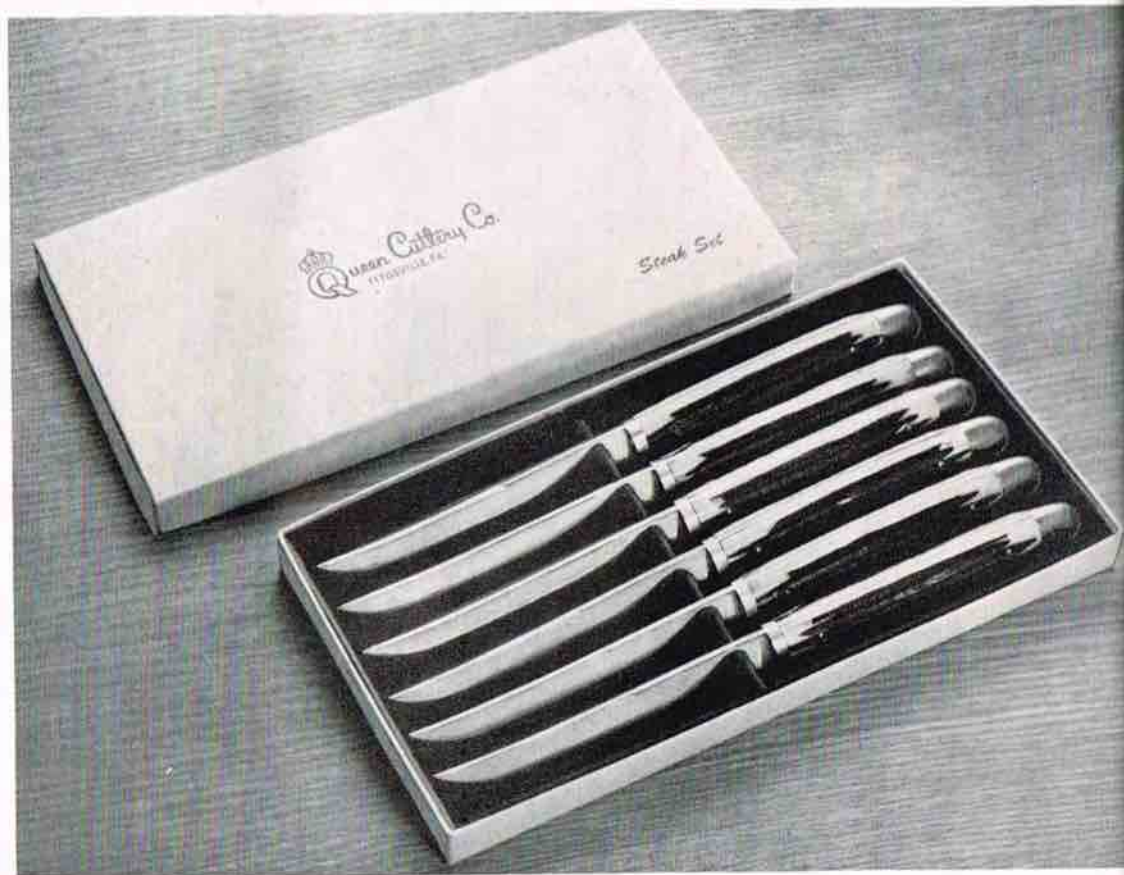
No. C-603 3 Piece De Luxe Carving Set — 9 inch De Luxe Carver, matching De Luxe Carving Fork and matching De Luxe Carving Steel. Individually set in attractive lined gift box.

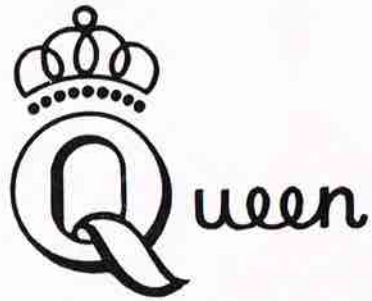
No. C-602—Same as above, except two piece De Luxe Carving set containing 9 inch De Luxe Carver and matching De Luxe Carving Fork.

No. S-606 De Luxe Steak Set — Six De Luxe Steak Knives individually set in attractive lined gift box. 

No. S604—Same as above, except contains four De Luxe Steak Knives.

No. S-608—Same as above, except contains eight De Duxe Steak Knives.





FINEST STAINLESS STEEL



No. HCS117 De Luxe "17" Set—Consists of 6 De Luxe Steak Knives, 6 matching De Luxe Steak Forks, matching De Luxe Carver, matching De Luxe Slicer, matching De Luxe Handy Knife, matching De Luxe Carving Fork, and matching De Luxe Sharpening Steel all individually set in beautiful solid walnut case lined with velveteen. Truly a magnificent creation.



Queen KITCHEN SETS ARE MA



Queen Kitchen Sets add beauty and utility to your kitchen

DE OF THE FINEST STAINLESS STEEL



7 Piece Kitchen Set—Formica Handles, attractively boxed in Gift Package which also can be used for display in stores. Consists of Spatula, Ladle, Spoon, Masher, Turner, Fork and Wall Hanger with screws and full instructions for hanging on kitchen wall. Made of the very finest stainless steel, expertly designed and manufactured, will not rust or stain and the Formica Handles are impervious to heat, fire and water and give very long life. By far, the finest Kitchen Aid Set on the market. An ideal gift and a must for every household. These above Kitchen Aids are also individually boxed and each Aid can be sold separately for those who don't desire the sets.



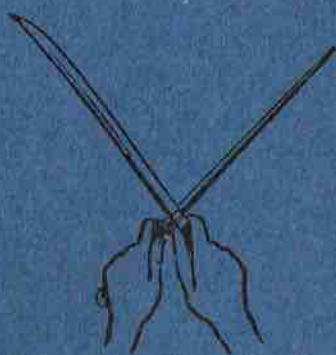
FINEST STAINLESS STEEL



3 Piece Stainless Steel Barbecue Set.

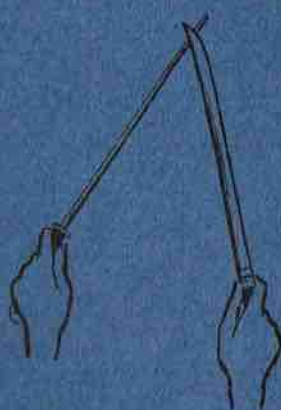
Extra long Formica Handles, equipped with Leather Thongs. The Formica Handles are impervious to heat, fire and water and will give long life. This attractive gift set has been long awaited by all those who like to cook outdoors.

How to Sharpen a Knife



1. Start of First Stroke

Grasp sharpening steel firmly in left hand, knife in right. Hold cutting edge of blade away from body and at about a 20 degree angle to the steel. Place hilt of knife at bottom of steel near guard.



2. End of First Stroke

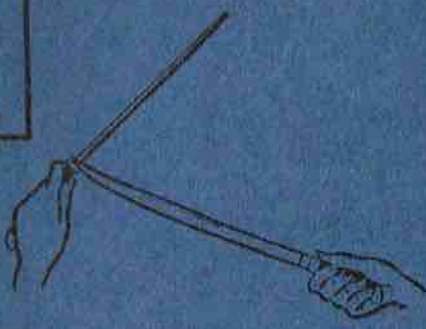
Now, draw blade up and across top of steel with even pressure so that you run blade of knife up to tip of steel. Both knife tip and steel tip should be together at the completion of this stroke.



3. Start of Return Stroke

Turn knife over so that the cutting edge faces toward the body. Place hilt of blade at tip of sharpening steel. You are now ready for the return stroke.

**QUEEN
KNIVES**
stay sharp
longer!



4. End of Return Stroke

Draw blade across and down the sharpening steel with even pressure. At the end of this stroke knife and sharpening steel should be tip to guard.

A dozen or so even strokes equal in number on both sides of the blade will make even a dull knife razor-sharp. By carefully feeling the cutting edge you will be able to judge just when the knife has been sharpened enough. Use the same above procedure when sharpening a knife on a stone.

