

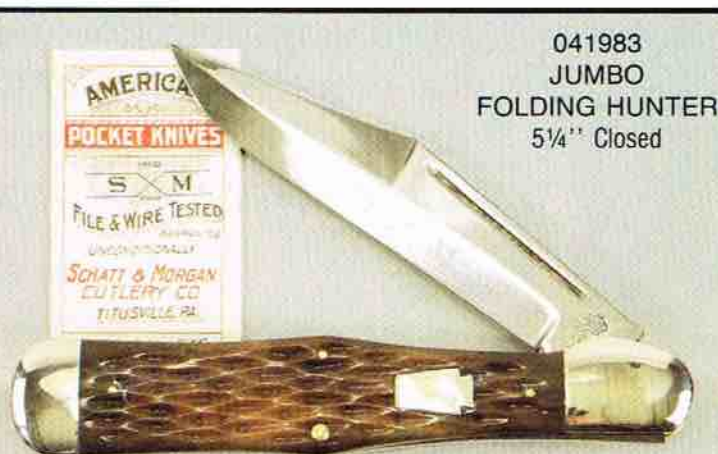
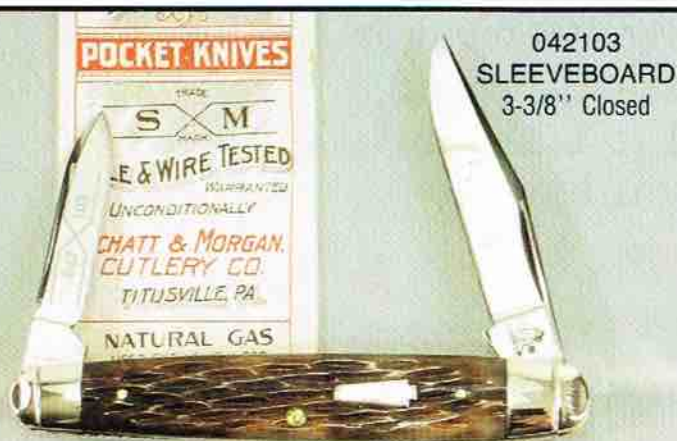


Queen  
City  
1918 - 1947

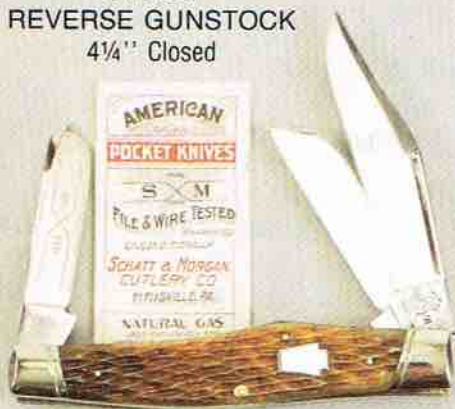
Queen Steel  
1947 - 1991

## SCHATT & MORGAN POCKETKNIFE SERIES I by Queen Steel

Schatt and Morgan was founded in 1890 and was purchased by Queen City in 1932. In 1947 Queen City changed it's name to Queen Cutlery and introduced Queen Steel Knives. Queen Cutlery is still housed in the Schatt and Morgan factory.



043150  
REVERSE GUNSTOCK  
4 1/4" Closed



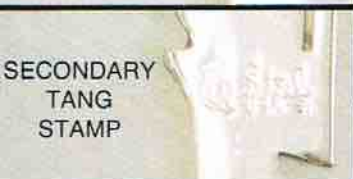
041811  
TRAPPER - Single Blade  
4-1/8" Closed



042369  
BARLOW  
3 1/2" Closed



PRIMARY  
TANG  
STAMP



SECONDARY  
TANG  
STAMP

Queen Steel Blades • Jigged Bone Handles  
Handmade in Titusville, PA.  
Authentic Keystone Shield pinned to handle  
Decorated Nickel Silver Bolsters  
Double Tang Stamps and Blade Etches  
Traditional Grinds • Brass Liners  
PRODUCTION WILL BE LIMITED  
(over)

042151  
TRAPPER  
2 Blades



Queen Cutlery Company

Factory - 507 Chestnut St., Titusville, Pa. 16354-0367  
Sales Office - P.O. Box 500, Franklinville, N.Y. 14737  
Telephone: 1-800-222-5233, in N.Y. Call (716) 676-5527

## **SCHATT & MORGAN POCKETKNIFE SERIES I**

The knives in **THE SCHATT & MORGAN** Series are made by skilled craftsmen who have learned their trade over the years. The knives take a good deal of time to manufacture - over 190 hand operations are required - and cannot be mass produced. Given the time and skill required to make these knives, annual production capacity is limited.

- All secondary blades will be tang stamped **SCHATT & MORGAN**.
- The year of manufacture is tang stamped.
- The bone on the Barlow is saw cut.
- Actual color of handle on Barlow is darker than photograph on front.
- The 042151 Trapper has a full end pen blade spring.

The labels that appear in the photographs are original **SCHATT & MORGAN** shipping labels.





*Queen  
City*

1918 - 1947

**Queen Steel**  
1947 - 1991

## SCHATT & MORGAN POCKETKNIFE SERIES II by Queen Steel

Schatt and Morgan Series II features '92 tang stamps, jigged, deep red bone handles and two new patterns, - the Lockback Hunter Swing Guard and the Doctor's Knife. Production of Series I sold out in 5 months. Production of Series II will also be limited.

043150  
REVERSE GUNSTOCK  
4 1/4" Closed



✓ FULLY  
OPENED

04181L  
LOCKBACK  
HUNTER WITH  
SWING GUARD  
4 1/2" Closed

042151  
TRAPPER  
2 Blades  
3 1/2" Closed



041811  
TRAPPER  
Single Blade  
4 1/8" Closed



042103  
SLEEVEBOARD  
3 3/8" Closed



042296  
DOCTOR'S  
KNIFE  
3 1/2" Closed



049183  
JUMBO  
FOLDING HUNTER  
5 1/4" Closed



042369  
BARLOW  
3 1/2" Closed



Queen Steel Blades • Jigged Bone Handles  
Handmade in Titusville, PA.

Authentic Keystone Shield pinned to handle

Decorated Nickel Silver Bolsters

Double Tang Stamps and Blade Etches

Traditional Grinds • Brass Liners

PRODUCTION WILL BE LIMITED

(over)



ACTUAL BONE COLOR

*Queen Cutlery Company*

Factory - 507 Chestnut St., Titusville, Pa. 16354-0367  
Sales Office - P.O. Box 500, Franklinville, N.Y. 14737  
Telephone: 1-800-222-5233, in N.Y. Call (716) 676-5527



## **SCHATT & MORGAN POCKETKNIFE SERIES II**

The knives in **THE SCHATT & MORGAN** Series are made by skilled craftsmen who have learned their trade over the years. The knives take a good deal of time to manufacture - over 190 hand operations are required - and cannot be mass produced. Given the time and skill required to make these knives, annual production capacity is limited.

- All secondary blades will be tang stamped **SCHATT & MORGAN**.
- The year of manufacture is tang stamped.
- The bone on the Barlow is saw cut.
- The 042151 Trapper has a full end pen blade spring.
- Actual color of bone on the **SCHATT & MORGAN** Series II is similar to the bone slab on front side.

The label in the photograph is an original **SCHATT & MORGAN** shipping label. These labels are reproduced on the shipping boxes for the **SCHATT & MORGAN** Series II Knives.





1890 - 1930

*Queen  
City*

1918 - 1947

**Queen Steel**  
1947 - Present

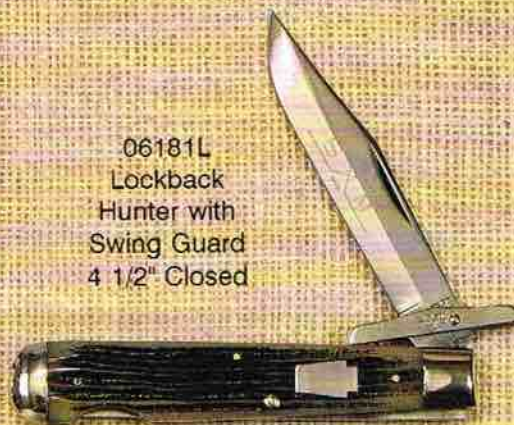
## SCHATT & MORGAN POCKETKNIFE SERIES III WINTERBOTTOM BONE

Schatt and Morgan Series III features Winterbottom bone handles, two new patterns, - the Scout Knife and Whittler - and two revised patterns - the Jumbo Lockback and Reverse Gunstock with parallel bolsters and pen blade.

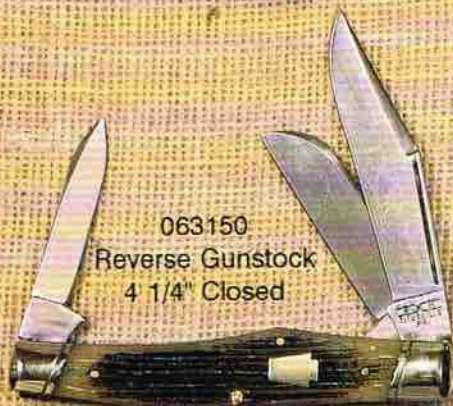
06182L  
Jumbo Lockback  
5 1/4" Closed



06181L  
Lockback  
Hunter with  
Swing Guard  
4 1/2" Closed



063150  
Reverse Gunstock  
4 1/4" Closed



0642SK  
Scout Knife  
3 3/4" Closed



062296  
Doctor's Knife  
3 1/2" Closed



063221  
Whittler  
3 1/4" Closed



Queen Steel Blades • Jigged Bone Handles  
Handmade in Titusville, PA.  
Authentic Keystone/Round Shield pinned to handle  
Decorated Nickel Silver Bolsters  
Double Tang Stamps and Blade Etches  
Year Date Tang Stamped  
Traditional Grinds • Brass Liners  
PRODUCTION WILL BE LIMITED  
(over)



*Queen Cutlery Company*

Factory - 507 Chestnut St., Titusville, Pa. 16354-0367  
Sales Office - P.O. Box 500, Franklinville, N.Y. 14737  
Telephone: 1-800-222-5233, in N.Y. Call (716) 676-5527



## **SCHATT & MORGAN POCKETKNIFE SERIES III**

### **WINTERBOTTOM BONE**

Winterbottom bone is a popular, old jigging pattern that has not been available for about 30 years. Although Queen made a few knives with Winterbottom in the 70's and 80's the bone was left over from larger production runs of the 50's. Winterbottom bone was used on **SCHATT & MORGAN**, Queen City and Queen Steel knives and is truly a part of the heritage of these companies.

The **SCHATT & MORGAN** Series III knives, like Series I and Series II, are made by very skilled craftsmen. The knives take a good deal of time to manufacture - about 200 hand operations are required - and cannot be mass produced. Given the time and skill required to make these knives, production will be limited.

- All secondary blades will be tang stamped **SCHATT & MORGAN**.
- The year of manufacture - '93 is tang stamped.
- The round shield on the Scout knife will be imprinted with **SCHATT & MORGAN**, the S & M logo, and Scout.





# SCHATT & MORGAN POCKETKNIFE SERIES IV

## Corncob Bone

These beautiful knives feature Corncob jigged bone and the rich, handsome color of dried corn. Series IV features two new patterns — the Cotton Knife and Canoe Whittler — and two revised patterns, the Swing Guard with a spear blade and the Doctor's Knife with a spatula blade.

043264 - Canoe Whittler  
3-5/8" Closed



04191L - Swing Guard  
Lockback - Spear Blade  
4-1/2" Closed



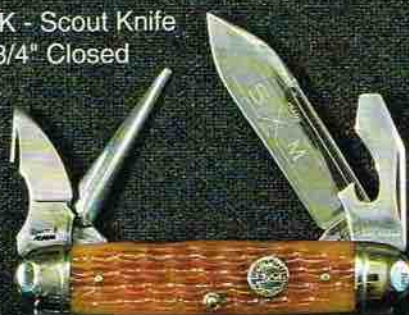
04161C - Cotton Knife  
4-1/8" Closed



043221 - Whittler  
3-1/4" Closed



0442SK - Scout Knife  
3-3/4" Closed



042296 - Doctor's Knife-  
Spatula Blade  
3-1/2" Closed



(over)



Factory - 507 Chestnut St., Titusville, PA. 16354-0367  
Sales Office - P.O. Box 500, Franklinville, NY 14737  
Telephone: 1-800-222-5233, in NY call (716) 676-5527  
FAX: (716) 676-5535



## SCHATT & MORGAN POCKETKNIFE SERIES IV

# Corncob Bone

The **SCHATT & MORGAN** Series IV knives, like the first three series, are made by very skilled craftsmen. The knives take a good deal of time to manufacture — about 200 hand operations are required — and cannot be mass produced. Given the time and skill required to make these knives, production will be limited.

- All secondary blades will be tang stamped **SCHATT & MORGAN**.
- The year of manufacture — '94 — is tang stamped.
- Series IV knives handled with Corncob jigged bone feature:
  - Queen Steel Blades
  - Handmade in Titusville, PA
  - Authentic Keystone/Round Shield Pinned to Handle
    - Decorated Nickel Silver Bolsters
  - Double Tang Stamps and Blade Etches
    - Traditional Grinds
    - Brass Liners

PRODUCTION WILL BE LIMITED





## SCHATT & MORGAN POCKETKNIVES

The Schatt and Morgan Cutlery Company was founded in 1890. The company produced very high quality pocketknives until it was purchased by the Queen City Cutlery Company in 1932. Queen City changed its name to the Queen Cutlery Company in 1947 and started making Queen Steel knives at about the same time. Queen Cutlery is still housed in the original Schatt and Morgan factory in Titusville, Pa.

Schatt and Morgan Series I pocketknives were introduced in 1991, with Series II, III and IV following through 1994. At the beginning of the year the new series is started and the old series discontinued. The make-up of each series has been:

- \* Series I - 1991 - Brown jigged bone, six knives, introductory year.
- \* Series II - 1992 - Deep red jigged bone, eight knives, two new patterns.
- \* Series III - 1993 - Winterbottom bone, six knives, two new, one revised pattern.
- \* Series IV - 1994 - Corncob bone, six knives, two new, two revised patterns.

Given the time and skill necessary to produce these beautiful, premium quality knives, production has been, and will be, limited to less than 1,000 pieces per year. The knives typically sell out in the summer.

## SCHATT & MORGAN POCKETKNIFE SERIES V

The fifth year of the Schatt and Morgan reproductions is a milestone and this event is marked by the introduction of a new trapper pattern and the use of special handle materials - burnt stag and pearl - on the new Schatt and Morgan Series V Pocketknives. Additional features include:

- \* Queen Steel blades, with traditional grinds.
- \* Nickel silver liners on the Doctor's knife. Brass liners on the other four patterns.
- \* Year of manufacture - '95 tang stamped. All secondary blades tang stamped.
- \* Decorated nickel silver bolsters.
- \* All shields pinned to handles.





*Queen  
City*  
1918 - 1947

**Queen Steel**  
1947 - Present

## SCHATT & MORGAN POCKETKNIFE ANNIVERSARY SERIES V

Special handle materials and a new Trapper pattern mark the fifth anniversary of the Schatt and Morgan reproductions. The Doctor's Knife is handled in white, presentation grade pearl and, to highlight the pearl, nickel silver liners and a nickel silver center scale are used instead of brass. A new, decorative blade etch is also used on the Doctor's Knife. The new Sway Belly Trapper, Cotton Knife, Swing Guard Lockback and Canoe Whittler are handled in stag, which is lightly burnt to enrich the color.

032101  
Sway Belly Trapper  
4-1/8" Closed



033264  
Canoe Whittler  
3-5/8" Closed



052296  
Doctor's Knife  
3-5/8" Closed



03161C  
Cotton Knife  
4-1/8" Closed



03191L  
Swing Guard Lockback  
4-1/2" Closed







## SCHATT & MORGAN POCKETKNIVES

The Schatt & Morgan Cutlery Company was founded in 1890. The company produced very high quality pocketknives until it was purchased by the Queen City Cutlery Company in 1932. Queen City changed its name to the Queen Cutlery Company in 1947 and started making Queen Steel knives at about the same time. Queen Cutlery is still housed in the original Schatt & Morgan factory in Titusville, Pa.

Schatt & Morgan Series I pocketknives were introduced in 1991, with Series II, III, IV and V following through 1995. At the beginning of the year, the new series is started and the old series discontinued. The make-up of each series has been:

- Series I - 1991 - Brown jigged bone, six knives, introductory year.
- Series II - 1992 - Deep red jigged bone, eight knives, two new patterns.
- Series III - 1993 - Winterbottom bone, six knives, two new, one revised pattern.
- Series IV - 1994 - Corncob bone, six knives, two new, two revised patterns.
- Series V - 1995 - Anniversary Series - burnt stag and pearl, five knives, one new pattern.

Given the time and skill necessary to produce these beautiful, premium quality knives, production has been, and will be, limited to less than 1,000 pieces per year. The knives typically sell out in the summer.

### The Schatt & Morgan reproductions feature:

- Queen Steel blades, with traditional grinds.
- Nickel silver liners on the pearl handled knives, brass liners on all other patterns.
- Year of manufacture tang stamped. All secondary blades tang stamped.
- Decorated nickel silver bolsters.
- All shields pinned to handles.
- Attractive Schatt & Morgan gift boxes.





Queen  
City  
1918 - 1947

Queen Steel  
1947 - Present

## SCHATT & MORGAN POCKETKNIFE SERIES VI EMERALD GREEN BONE - PRESENTATION GRADE PEARL

Dark emerald green, jigged bone, presentation grade pearl, three new patterns and one revised pattern highlight Schatt & Morgan Series VI. The Wharncliffe Whittler includes nickel silver liners and a decorative blade etch. The Wharncliffe Whittler, English Jack, and Congress Whittler are new patterns. The Canoe has been modified to two blades, with slanted bolsters.

042229  
English Jack  
4½" closed



053046  
Wharncliffe Whittler  
3½" closed



042296  
Doctor's Knife  
3½" closed



042264  
Canoe  
3½" closed



042101  
Sway Belly Trapper  
4½" closed



043431  
Congress Whittler  
4" closed





# SCHATT & MORGAN POCKETKNIVES

## WINNER BLADE MAGAZINE

### INVESTOR/COLLECTOR KNIFE OF THE YEAR

Queen Cutlery was honored to win the *Blade Magazine*, Investor/Collector Knife Of The Year Award for the Schatt & Morgan Series VI Pocketknives.



The Schatt and Morgan Cutlery Company was founded in 1890. The company produced very high quality pocketknives until it was purchased by the Queen City Cutlery Company in 1932. Queen City changed it's name to the Queen Cutlery Company in 1947 and started making Queen Steel knives at about the same time. Queen Cutlery is still housed in the original Schatt and Morgan factory in Titusville, Pa.

Schatt and Morgan Series I pocket knives were introduced in 1991, with Series II, III, IV, V and VI following through 1996. At the beginning of the year the new series is started and the old series discontinued. The make up of each series has been:

- \* Series I - 1991 - Brown jigged bone, six knives, introductory year.
- \* Series II - 1992 - Deep red jigged bone, eight knives, two new patterns.
- \* Series III - 1993 - Winterbottom bone, six knives, two new, one revised pattern.
- \* Series IV - 1994 - Corncob bone, six knives, two new, two revised patterns.
- \* Series V - 1995 - Anniversary Series - burnt stag and pearl, five knives, one new pattern
- \* Series VI - 1996 - Emerald green bone and pearl, six knives, three new and one revised pattern.

Given the time and skill necessary to produce these beautiful, premium quality knives, production has been, and will be, limited to less than 1,000 pieces per year. The knives typically sell out in the summer.

### The Schatt & Morgan Reproductions feature:

- \* Queen Steel blades, with traditional grinds.
- \* Nickel silver liners on the Doctor's knife. Brass liners on all other patterns.
- \* Year of manufacture tang stamped. All secondary blades tang stamped.
- \* Decorated nickel silver bolsters.
- \* All shields pinned to handles.
- \* Attractive Schatt & Morgan gift boxes.



# SCHATT & MORGAN POCKETKNIFE

## SERIES VII

### DEEP BLUE BONE - PRESENTATION GRADE PEARL

We are proud to offer a new Doctor's Knife, handled in presentation grade pearl and a new Tear Drop Jack in deep blue, jigged bone as our new patterns for Schatt & Morgan Series VII. The main blade on the English Jack has been modified to a clip blade and the Wharncliff Whittler is handled in deep blue bone.



- A. 043431 Congress Whittler - 4" Closed
- B. 042206 Tear Drop Jack - 3 7/8" Closed
- C. 043046 Wharncliff Whittler - 3 1/8" Closed

- D. 042264 Canoe - 3 5/8" Closed
- E. 052266 Small Doctor's - 3 1/4" Closed
- F. 042229 English Jack - 4 1/2" Closed



# File & Wire Tested

## Features:

- 5-1/4" Closed
- Queen Steel Blades
- Original File & Wire Tested Etching
- Nickel Silver Bolsters
- Brass Liners
- New Schatt & Morgan Shield
- Schatt & Morgan Gift Box

## Pattern: 041883

Queen Cutlery is proud to introduce its inaugural File and Wire Tested Knife. This Folding Hunter handled in jigged burnt red bone will be offered for one year then be replaced with a new addition for 1999. File and Wire Tested is an old tempering process used by Schatt & Morgan before Rockwell hardness testing evolved.

## SCHATT & MORGAN POCKETKNIVES

The Schatt and Morgan Cutlery Company was founded in 1890. The company produced very high quality pocketknives until it was purchased by the Queen City Cutlery Company in 1932. Queen City changed it's name to the Queen Cutlery Company in 1947 and started making Queen Steel knives at about the same time. Queen Cutlery is still housed in the original Schatt and Morgan factory in Titusville, Pa.

Schatt and Morgan Series I pocket knives were introduced in 1991. At the beginning of the year the new series is started and the old series discontinued. The make up of each series has been:

- \* Series I - 1991 - Brown jigged bone, six knives, introductory year.
- \* Series II - 1992 - Deep red jigged bone, eight knives, two new patterns.
- \* Series III - 1993 - Winterbottom bone, six knives, two new, one revised pattern.
- \* Series IV - 1994 - Corncob bone, six knives, two new, two revised patterns.
- \* Series V - 1995 - Anniversary Series - burnt stag and pearl, five knives, one new pattern
- \* Series VI - 1996 - Emerald green bone and pearl, six knives, three new and one revised pattern.
- \* Series VII - 1997 - Deep blue bone and pearl, six knives, two new and one revised pattern.

Given the time and skill necessary to produce these beautiful, premium quality knives, production has been, and will be, limited to less than 1,000 pieces per year. The knives typically sell out in the summer.

### *The Schatt & Morgan Reproductions feature:*

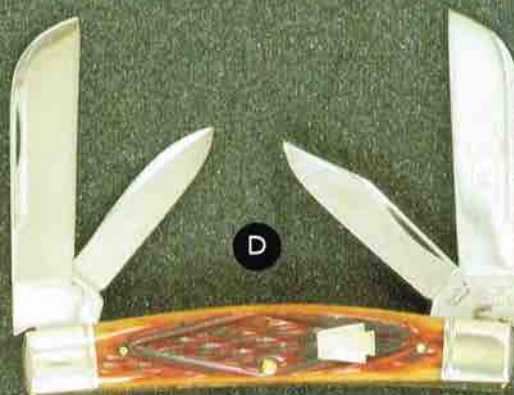
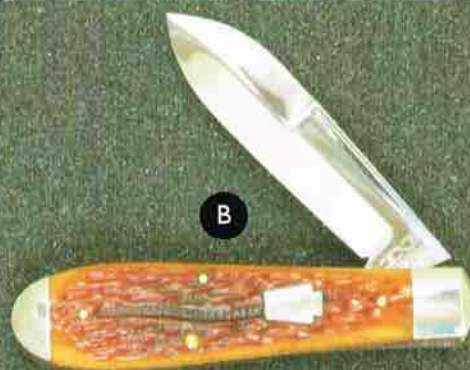
- \* Queen Steel blades, with traditional grinds.
- \* Year of manufacture tang stamped. All secondary blades tang stamped.
- \* Decorated nickel silver bolsters, brass liners.
- \* All shields pinned to handles.
- \* Attractive Schatt & Morgan gift boxes.



# SCHATT & MORGAN POCKETKNIFE SERIES VIII

## ANTIQUE CARAMEL WORM GROOVE BONE - BURNT STAG - PEARL

Featured below is Queen Cutlery's new Series VIII Schatt & Morgan collection. An Equal End Jack handled in worm groove bone and two small gunstocks handled in burnt stag and pearl have been added. Also the Tear Drop Jack has been modified to a one blade knife and the Congress Whittler is now four bladed, both being fitted with worm groove bone.



- A. 042266 Small Doctor's - 3-1/4" Closed
- B. 041906 Tear Drop Jack - 3-7/8" Closed
- C. 042176 Equal End Jack - 3-7/8" Closed
- D. 044431 Congress Whittler - 4" Closed

- E. 032236 Small Gunstock - 3" Closed
- F. 042146 Wharnclyff Whittler - 3-1/8" Closed
- G. 052236 Small Gunstock - 3" Closed



**NEW  
FOR  
1999**

# Schatt & Morgan Collect

The 1999 Series IX Schatt & Morgan collection are handled in a beautifully jigged Sheffield swayed  
a burnt stag and Mother of Pearl handles. Features include: ATS34 blade steel • Mirror polished

**Unquestionably, the PREMIER COLLECTOR SERIES**



- A. 042206 Tear Drop EO - 3-7/8" Closed  
B. 042140 Gunstock - 3-1/2" Closed  
C. 052146 Half Whittler - Pearl - 3-1/8" Closed  
D. 032146 Half Whittler - Stag - 3-1/8" Closed

- exemplary craftsmanship
- meticulous attention to detail
- finest traditional patterns



# *“Queen’s Own™”*

## Schatt & Morgan Collectibles – Series IX



Retail Price

**\$676<sup>64</sup>**

Members Only

**\$473<sup>64</sup>**

*Queen’s Own™* members now have a special opportunity to purchase the Premier Collector Series available anywhere – Schatt & Morgan Series IX. This series is a limited edition every year and will sell out soon – order yours today.

- 5 Patterns handled in jigged Sheffield swayed worm groove antique green bone
- 1 Pearl • 1 Burnt stag • ATS 34 blade steel • Superior craftsmanship

★★★★★ **QUALITY**



SERIES  
X

# Schatt & Morgan

New for 2000

LIMITED RUN OF 600

- ATS 34 Blade Steel (Master Blades)
- Mirror Polished Blades • Nickel Silver Bolsters
- Superior Craftsmanship • ★★★★★ Quality
- S&M Gift Boxes • The S&M Series Sells Out Every Year

UNQUESTIONABLY, THE PREMIER COLLECTOR SERIES AVAILABLE ANYWHERE



## Woodland Roof Beer Bone

- A. 043176 Whittler • 3 Blades  
• 3-1/2" closed
- B. 041111 Lockback • 1 Blade  
• 4-1/2" closed
- C. 041120 Toothpick • 1 Blade  
• 5" closed



## Genuine Mother of Pearl

- D. 052166 Small Doctors • 2 Blades  
3-1/4" closed
- E. 052125 Muskrat • 2 Blades  
4" closed





26 Empire Street • P.O. Box 500 • Franklinville, NY 14737  
(800) 222-5233 • (716) 676-5527 • FAX: (800) 299-2618  
Web Site: [www.queencutlery.com](http://www.queencutlery.com) • E-Mail: [salesOKC@aol.com](mailto:salesOKC@aol.com)



# SCHATT & MORGAN



## SERIES XI 2001



041269  
Barlow "Special"



042240  
Gunstock



042266  
Small Doctor's



042265  
Baby Sunfish



052151  
Dogleg Jack



052221  
Pen Knife



043149  
Large Stockman



PROUDLY MADE IN THE U.S.A.





# SCHATT

1902



# MORGAN

2002

LIMITED  
RUN OF  
1,000

PREMIER  
COLLECTOR  
SERIES

## 100th Anniversary

### SCHATT & MORGAN COLLECTIBLES - SERIES XII

In jubilant celebration of the founding of Schatt and Morgan Cutlery Company 100 years ago, we proudly introduce Series XII for 2002. This is unquestionably the finest collector-quality set of pocketknives available anywhere! Buy a favorite pattern of your choosing or ... better yet ... buy the complete set of seven knives and receive an attractive display case with our compliments.

To commemorate Schatt and Morgan's 100th anniversary we've selected handles of Buffalo Horn with an intricate inlay of presentation-grade Mother of Pearl. What an eye-catching combination! These knives will certainly appreciate rapidly in value ... and make for an excellent investment! The main blades are laser etched in gold.

Buffalo Horn has long been sought after by knifemakers for its durability, beauty and rich dark color. From the Cape Water Buffalo, these horn scales are characterized by an elegant, smooth texture and depth of color variation. When married-up with Mother of Pearl, Buffalo Horn makes a great statement!

• 420SS Mirror Polished Blades (56-58Rc) • Nickel Silver Bolsters • Brass Liners • S&M Gift Boxes • 5 Star Quality •



142265 Baby Sunfish • 2 Blades • 3-3/4" closed

142269 Straight Jack • 2 Blades • 3-1/2" closed



141112 Small Toothpick • 1 Blade • 4-1/4" closed

143229 Equal-End Whittler

3 Blades • 3-3/4" closed



14113L 3L Lockback Hunter • 1 Blade • 4-1/2" closed

• American Pocketknives: A History of Schatt & Morgan and Queen Cutlery of Titusville, PA - by David A. Krauss, Ph.D. •

• Queen Cutlery Collectors Club ... Contact Queen Customer Service (800-222-5233) •



**PROUDLY CRAFTED IN THE GOOD OL' USA**





**Black Pearl**, often referred to as "Black Lip Mother of Pearl", is harvested from extremely rare pearl oyster shells native to the tropical waters of the South Pacific surrounding Indonesia and Malaysia. These gorgeous artworks of nature are carefully hand-selected for color and size ... only the very best specimens are chosen to complete our knives! Only a small percentage of shells are large enough and thick enough to yield suitable handles providing a rich, dark interior color. The iridescence of the Black Pearl is incomparable!

- 420SS Mirror Polished Blades
- Nickel Silver Bolsters
- Brass Liners
- S&M Gift Boxes



**152221 Senator BP**  
2 Blades  
3-1/4" Closed

**White Pearl**, using only presentation-grade "Mother of Pearl", provides a look of distinction to this premium pocketknife. A handsome knife for the gentleman ... a beautiful item for the lady ... and a great addition to the collector's treasure trove! This knife is of unsurpassed quality and craftsmanship ... the product of some 125 meticulous production steps. Queen's experienced cutlers take *great* pride in their handiwork ... and it clearly shows in this pearl-handled Senator.



**052221 Senator WP**  
3-1/4" Closed

- 420SS Mirror Polished Blades
- Nickel Silver Bolsters
- Brass Liners
- S&M Gift Boxes

Display Case ... FREE  
with the purchase of a  
complete set of Series XII.



Factory: 507 Chestnut St., PO Box 408, Titusville, PA 16354  
Sales Office: 26 Empire St., PO Box 500, Franklinville, NY 14737  
800.222.5233 • 716.676.5527 • Fax: 800.299.2618 or 716.676-5535  
Web Site: [www.queencutlery.com](http://www.queencutlery.com) • E-mail: [salesOKC@aol.com](mailto:salesOKC@aol.com)



SERIES XIII

# Schatt & Morgan Cutlery Co.

LIMITED  
RUN  
OF 600

## A PREMIER COLLECTOR SERIES FEATURING:

- Sterling Silver Keystone Shields
- Golden Age Jigged Bone Handles
- Mastodon Ivory Office Knife
- 2003 Keystone Display Case
- Mirror Polished 420 H.C. Stainless Blades at 56/57 Rockwell C-Scale
- Limited Production of 600 For Each Pattern
- Fully Hand Hafted  
Traditional Finish



MSRP  
\$825.00

- A. 122221 3 1/4" Equal end senator pattern with ancient wooly mammoth Ivory handles and "Office Knife" lasered design MSRP \$197.54
- B. 042169 3 1/2" Two blade Barlow with signature bolsters & clip point master blade MSRP \$130.54
- C. 042196 3 5/8" Physicians knife with clip point master blade & spatula blade MSRP \$129.62
- D. 043299 3 1/2" Equal end Split back spring whittler with lined and pinched bolsters and spear point master blade MSRP \$153.38
- E. 041131 4 1/2" Mountain Man folding lockback hunter with clip point master blade and lanyard tube MSRP \$137.42
- F. 042213 4 1/2" Wildcat Driller two blade sleeveboard with spear point master blade MSRP \$167.38



SERIES XIV

# Schatt & Morgan Cutlery Co.

LIMITED  
RUN  
OF 600

## A PREMIER COLLECTOR SERIES FEATURING:

- Sterling Silver Shields
- Crimson Rodgers Jig Bone
- Presentation Grade Mother of Pearl
- 2004 Schatt & Morgan Display Case
- Mirror Polished 420 H.C. Stainless Steel Blades at 56/57 Rockwell C-Scale
- Limited Production of 600 For Each Pattern
- Fully Hand Hafted Traditional Finish



Knife Set  
MSRP  
\$905.06

Includes Display Case

- A. 052117 2-7/8" Genuine presentation grade mother of pearl handle Reversed Peanut pattern gentlemen's knife MSRP \$166.54
- B. 043448 3 1/2" Traditional split backspring Carpenters Whittler pocket knife with rough carving and detail blades MSRP \$147.58
- C. 042196 3-5/8" Country doctors best Physicians Knife with clip point master blade and pharmacy spatula blade MSRP \$133.30
- D. 04213T 4-1/2" Mountain Man Trapper folding outers knife with large clip and skinner blades MSRP \$163.16
- E. 042213 4-1/2" Wildcat Driller sleeveboard pattern rope cutting knife with double pull spear point master blade MSRP \$169.46
- F. 042127 4" Original single backspring Yankee Muskrat skinning knife with two turkish style clip blades MSRP \$126.30
- G. 2004 Schatt & Morgan display case 12" x 18" cherry wood MSRP \$99.30



2005  
SERIES XV

# Schatt & Morgan Cutlery Co.

LIMITED  
RUN  
OF 600

*Schatt & Morgan* is proud to reintroduce after 10 years Genuine Sambar Stag. This is the same stag that cutlery manufacturers have been using for the past 100 years.

**A Premier Collector Series Featuring:**

- Nickel silver bolsters
- Genuine presentation grade **Black Lip Mother of Pearl**
- 2005 limited walnut display case
- Mirror polished 420 H.C. stainless steel blades at 56/57 Rockwell c-scale
- Each pattern is limited to 600 each
- Fully hand hafted traditional finish



- A. 151116 3" Genuine Presentation grade Black Lip Mother of Pearl Mini Toothpick. Full nickel silver liners and pins. **MSRP \$130.04**
- B. 032117 2-7/8" Genuine Sambar Torched Stag. Reversed Peanut pattern gentleman's knife. With master clip blade and secondary pen blade. **MSRP \$120.16**
- C. 033163 3-1/2" Genuine Sambar Torched Stag Rail-Splitter pattern, with dimpled bolster. Master blade is a traditional clip with pen and coping secondary blades. **MSRP \$170.72**
- D. 033448 3-1/2" Genuine Sambar Torched Stag Split Backspring Carpenters Whittler pocket knife. With rough carving and detail blades. Slanted and lined dimpled bolsters. **MSRP \$150.56**
- E. 031302 5" Genuine Sambar Torched Stag Large Coke Bottle with lined bolsters. Clip blade has long pull nail mark and cut in swedge grind. **MSRP \$187.08**
- F. 032127 4" Genuine Sambar Torched Stag Original Single back spring Yankee Muskrat. With two Turkish style clip blades. **MSRP \$148.74**
- G. Complete set with display case **MSRP \$754.20** (this price reflects a 10% discount if you purchase a complete set in a single purchase.)

QUEEN CUTLERY CO. PO Box 500 Franklinville, NY 14737 Phone 800-222-5233 • Fax 800-299-2618 • Email: sales@ontarioknife.com

Proudly manufactured in Titusville, PA



# Schatt & Morgan Cutlery Co.

## 2006 SERIES XVI

Limited Run of 600

*Premier Collector Series Featuring:*

*Bradford Jigged Green Bone*

*Nickel silver bolsters*

*Mirror polished 420 H.C. stainless steel blades*

*56/57 Rockwell c-scale*

*Each pattern is limited to 600 each*

*Fully hand crafted traditional finish*

Complete set with display case

MSRP \$719.86

This price reflects a 10% discount  
if you purchase a complete set in a  
single purchase.



Equal End Cattle Knife

# 043299

3 Blades

3 5/8" Closed

MSRP \$106.14



Serpentine Moose

# 041155

2 Blades

3 1/2" Closed

MSRP \$103.14



Rail Splitter Moose

# 042163

2 Blades

3 3/4" Closed

MSRP \$112.92



Coke Bottle

# 041802

1 Blade

5 1/4" Closed

MSRP \$120.24



88 Congress

# 044431

4 Blades

4" Closed

MSRP \$120.46



Mini Congress - White Pearl

# 054230

4 Blades • 2 3/4" Closed

Presentation Grade Mother of Pearl

MSRP \$126.94

QUEEN CUTLERY COMPANY  
PO Box 500, Franklinville, NY 14737  
[www.queencutlery.com](http://www.queencutlery.com)

Proudly manufactured in Titusville, PA



2007

SERIES XVII

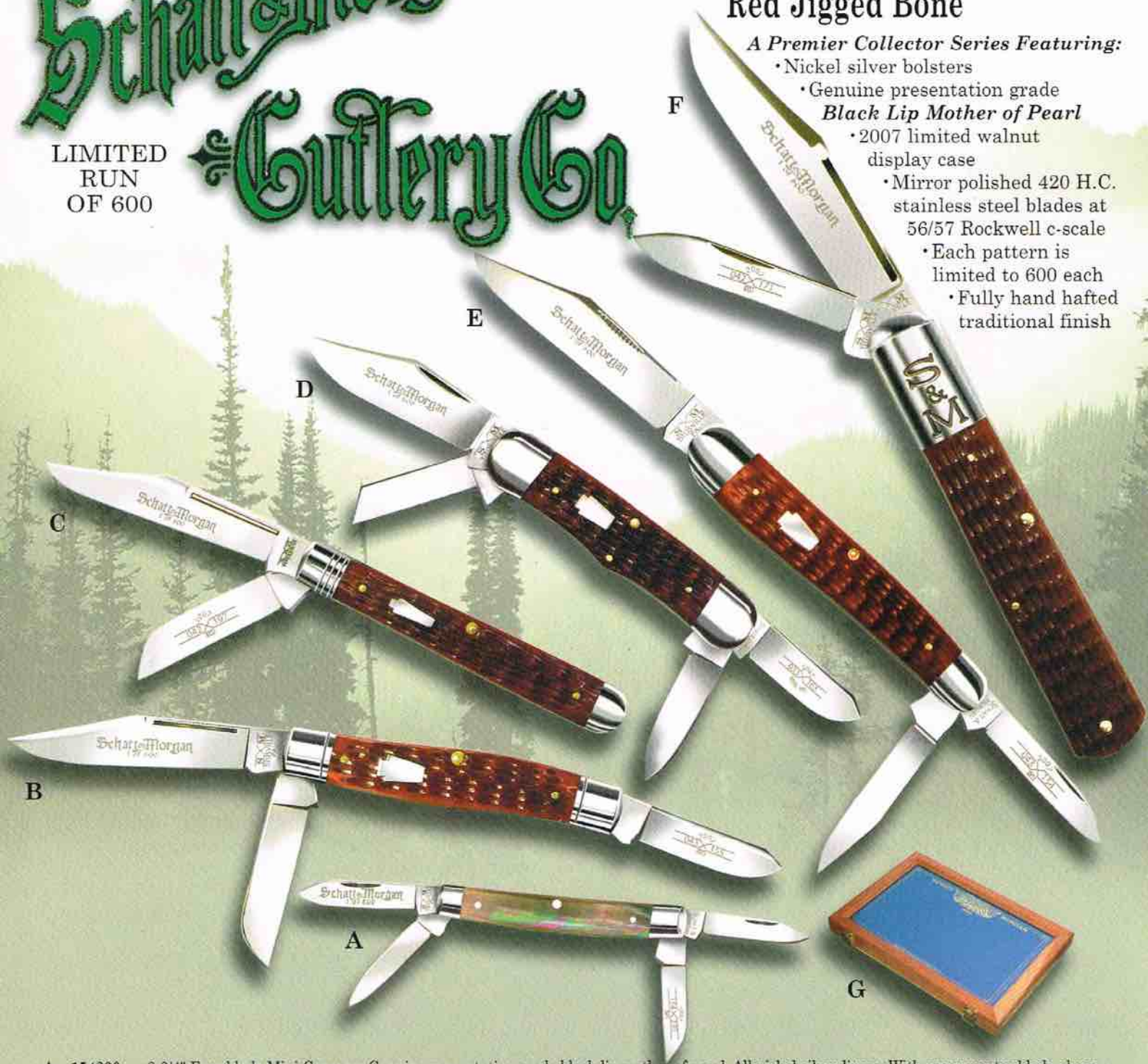
# Schatt & Morgan Cutlery Co.

LIMITED  
RUN  
OF 600

## Keystone State Timeworn Red Jigged Bone

*A Premier Collector Series Featuring:*

- Nickel silver bolsters
- Genuine presentation grade *Black Lip Mother of Pearl*
- 2007 limited walnut display case
- Mirror polished 420 H.C. stainless steel blades at 56/57 Rockwell c-scale
- Each pattern is limited to 600 each
- Fully hand hafted traditional finish



- A. 154230 2-3/4" Four blade Mini Congress Genuine presentation grade black lip mother of pearl. All nickel silver liners. With spear master blade along with two-pen blades and sheepfoot blade. All blades have a hand swedge grind and crescent nail marks. **MSRP \$113.00**
- B. 043155 3-1/2" Three blade Stockman pattern with lined bolsters master clip blade with long pull nail mark and cut in swedge. Secondary blade consists of hand swedge spey and sheepfoot blades. **MSRP \$116.24**
- C. 042197 3-5/8" Two blade Horticulturists knife with lined bolsters, master clip blade with cut in swedge grind and long pull nail mark. Hand swedge crescent nail marked secondary sheepfoot blade. **MSRP \$116.08**
- D. 044163 3-3/4" Four blade Rail Splitter with hand swedges master clip blade with a crescent nail mark. Secondary blades are coping blade spey blade and pen blades with crescent nail marks and hand swedge grinds. **MSRP \$161.36**
- E. 043154 4" Three blade Dogleg whittler pattern Master blade is a traditional clip with match striker nail mark and cut in swedge grind. Pen and small clip secondary blades. **MSRP \$133.02**
- F. 042171 5" Two blade Daddy Barlow with signature bolsters bare end, master clip blade with cut in swedge grind and long pull nail mark. Secondary pen blade with a hand swedge grind and crescent nail mark. **MSRP \$153.26**
- G. Complete set with display case **MSRP \$828.15** (this price reflects a 10% discount if you purchase a complete set in a single purchase.)



2008

SERIES XVIII

# Schatt & Morgan Cutlery Co.

LIMITED  
RUN  
OF 600

Mammoth Brown Bark Ivory  
& Pennsylvania Brown Berry  
Worn Worm Groove Bone

A Premier Collector  
Series Featuring:

- Nickel silver bolsters
- Genuine presentation grade Mammoth Brown Bark Ivory & Pennsylvania Brown Berry Worn Worm Groove Bone
- 2008 limited walnut display case
- Mirror polished 420 H.C. stainless steel blades at 56/57 Rockwell c-scale
- Each pattern is limited to 600 each
- Fully hand crafted traditional finish



- A. 042276 3-7/8" Two blade Swell Center Jack. Large spear with cut swedge extending to tip and long pull nail mark. Secondary pen blade with hand swedging and crescent nail mark. **MSRP \$146.75**
- B. 042429 4-1/2" Two blade Bare-end English Jack. Master blade extended sheepfoot with cut in swedge grind and long pull nail mark. Secondary blade is a pen blade with crescent nail mark and hand swedge grind. Rat tail nickel silver bolsters and brass liners. **MSRP \$172.00**
- C. 043054 4" Three blade Dogleg Whittler. Master blade large wharncleft with crescent nail mark and hand swedging. Small clip and pen secondary blades with crescent nail marks and hand swedges. **MSRP \$171.00**
- D. 042297 3-5/8" Two blade Horiculturists knife featuring pressed in signature bolster. Long spear master blade with cut in swedge grind and long pull nail mark. Secondary pen blade with hand swedge and crescent nail mark. **MSRP \$136.75**
- E. 043160 3-3/4" Three blade Sowbelly Stockman. Features lined, slanted and dimpled bolsters. Master clip with cut in swedge grind and long pull nail mark. Secondary blades spey and sheepfoot with hand swedge grind and crescent nail marks. **MSRP \$188.00**
- F. 122367 2-9/16" Two blade Mastadon Brown Bark Ivory Mini Barlow complete with nickel silver liners. Featuring mini razor master blade with hand swedging and crescent nail mark. Secondary blade consists of small pen blade with crescent nail mark and hand swedging. **MSRP \$136.75**
- G. Complete set with display case **MSRP \$1,049.52** (this price reflects a 10% discount if you purchase a complete set in a single purchase.)

QUEEN CUTLERY CO. PO Box 500 Franklinville, NY 14737 Phone 800-222-5233 • Fax 800-299-2618 • Email: sales@ontarioknife.com  
Proudly manufactured in Titusville, PA by Citizens of the United States of America



2009  
SERIES XIX

October Harvest Smooth Bone &  
Premium Presentation Mother of Pearl

# Schalt & Morgan Cutlery Co.

LIMITED  
RUN  
OF 600



## A Premier Collector Series Featuring:

- Nickel silver bolsters
- Genuine presentation grade  
*Mother of Pearl & October  
Harvest Smooth Bone*
- 2009 limited walnut display case
- Mirror polished 420 H.C. stainless steel blades  
at 56/57 Rockwell c-scale
- Each pattern is limited to 600 each
- Fully hand crafted traditional finish

- A. 04162C 4" One blade bare end Medium Cotton Sampler. Sampler master blade featuring cut in swedge grind. Nickel silver keystone shield. Beautiful October harvest smooth bone. **MSRP \$146.66**
- B. 042299 3-5/8" Two blade Harness Knife. Master spear blade with long pull nail mark, cut ground swedge. Secondary leather punch blade with crescent nail mark. Handles feature old school rat tailed bolsters. **MSRP \$149.28**
- C. 043276 3-1/2" Three blade extended bolster Ballon Whittler. Master spear blade with long pull nail mark cut in swedge grind. Two secondary blades - small clip and pen blade. Features hand swedge and crescent nail marks. **MSRP \$160.12**
- D. 044160 3-3/4" Four blade Sowbelly Stockman. Features lined slanted and dimpled bolsters, master clip blade with cut in swedge grind and long pull nail mark. Three secondary blades - spey, pen and sheepfoot blades with hand swedge and crescent nailmarks. **MSRP \$200.20**
- E. 042222 3-1/2" Two blade Medium Coke Bottle. Master sabre ground spear blade with long pull nail mark, cut in swedge grind. Secondary pen blade with hand swedge and crescent nail mark. **MSRP \$146.66**
- F. 053221 3-3/4" Three blade Gents Whittler. Master spear blade with cut ground swedge, long pull nail mark. Two secondary blades consist of pen and carpenter with hand swedge and crescent nail marks. Presentation grade Mother of Pearl handles on nickel silver liners. Slanted, lined and dimpled bolsters. **MSRP \$269.38**
- G. Complete set with display case **MSRP \$1,091.72** (this price reflects a 10% discount if you purchase a complete set in a single purchase.)



**Bourbon Reversed Worm Groove Jig Bone & Premium Presentation Mother of Pearl**

**2010 SERIES XX**

**Schatt & Morgan**



**AFTER TWO  
DECADES THE  
KEYSTONE SHIELD  
SERIES  
WILL BE RETIRED!**

**LIMITED RUN OF 600**

**Cutlery Co.**



*After two decades of  
Schatt & Morgan reproductions,  
the Keystone Shield Series will  
again be retired. This Premier  
Collector Series Features:*

- Genuine presentation grade Mother of Pearl with mirror polished blades
- Bourbon Reversed Worm Groove Jig Bone with Old Style high satin blade finish
- 2010 limited walnut display case
- 420 H.C. stainless steel blades at 56/57 Rockwell c-scale
- Fully hand crafted traditional finish
- Limited to 600 each

- A. 042149 4-1/4" Straight Moose. MSRP \$141.80  
 B. 042822 3-1/2" Medium Coke Bottle. MSRP \$152.40  
 C. 043163 3-3/4" Rail Splitter Whittler. MSRP \$180.00  
 D. 051297 3-3/4" Signature Bolster Dr. Knife. MSRP \$154.70  
 E. 042121 3-1/4" Gentlemen's Muskrat. MSRP \$153.50  
 F. 045160 3-3/4" Sowbelly. MSRP \$220.60  
 G. Complete set with engraved "20th Anniversary" Display Case. MSRP \$1,065.50  
 (this price reflects a 10% discount if you purchase a complete set in a single purchase).

QUEEN CUTLERY CO. PO Box 500 Franklinville, NY 14737 Phone 800-222-5233 • Fax 800-299-2618 • Email: sales@ontarioknife.com  
 Proudly manufactured in Titusville, PA by Citizens of the United States of America