



Queen Cutlery Identification Guide

Tang Stamp & Blade Etch Dating

Schatt & Morgan, Queen City and Queen

Carl Bradshaw is to be thanked for designing and assembling this guide from many, many photos submitted to him.

This tang stamp guide was assembled by a group of Queen knife owners & collectors following the closing of the Queen factory in Titusville in 2018, based on photographing actual knife tang stamps in their various collections. This strategy has resulted in a much more detailed guide, with nearly all known stamps documented. Review of the knives and catalogs has also resulted in tighter dates for use of each stamp.

Some of the dates for when a stamp was used are approximate. Especially through the 1950's when "stainless" stamps were used, and through the modern era, into the 1980s.

Rarely, a knife might escape the factory without a tang stamp, but that does not automatically mean it was made in the 1960s, (when Queen did not use tang stamps, only blade etches.)

Some knives re-use tang stamps from earlier eras, such as all Schatt & Morgan or Queen City knives after 1991. Queen has tried to provide these knives with modifications, so one can tell them from an original readily (check the pile side.) The Queen Heritage collection used historical tang stamps, but also added an additional stamp on the pile side of the main blade. Queen Collector Club limited edition knives used many historical tang stamps, but also etched the blade prominently with date and club information.

***When buying a Queen knife with an older tang stamp,
pay attention to the whole knife!***

Note - newer Queen stamps and etches created after the 2018 closing of the Titusville, PA factory are not included in this identification guide.

Additional thanks to David Clark, Fred Fisher, Daniel Lago, David Krauss, Bob Welch, and Brian Guth for their contributions to the stamps and knife photos provided.

If any additional stamps are found, they will be added, and this guide will be updated, with the date listed below updated as well.



Queen Cutlery Identification Guide

Tang Stamp & Blade Etch Dating



Schatt & Morgan mark side stamp used from approximately 1897 to 1902.



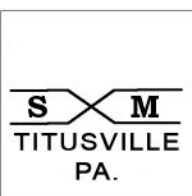
Schatt & Morgan mark side stamp used from approximately 1897 to 1902.

Later reused on modern knives from 2011-2012, usually with a pile side stamp to help distinguish from older knives.



Schatt & Morgan mark side stamp used from approximately 1897 to 1902.

Later reused on modern knives after 2000, usually with a pile side stamp to help distinguish from older knives.



Schatt & Morgan mark side stamp used from approximately 1903 to 1931.

Later reused on modern knives from 1991-2017, usually with a pile side stamp to help distinguish from older knives.



Schatt & Morgan mark side stamp used from approximately 1903 to 1931.



Schatt & Morgan mark side stamp used from approximately 1903 to 1931.



A Schatt & Morgan mid-blade stamp used by Sears Roebuck & Company. Used from 1905-1918.



Queen Cutlery Identification Guide

Tang Stamp & Blade Etch Dating



Schatt & Morgan pile side stamp used from approximately 1915 to 1918 on military WW1 officer's knives.



A Schatt & Morgan mid-blade stamp used by W. Stokes Kirk Company, Philadelphia, PA. (Selling clothes, goods, and military surplus.) Used in their 1919-1920 catalogs.

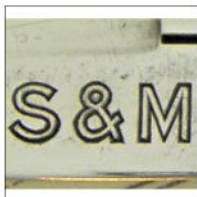


Queen City mark side stamp used from approximately 1922 to 1933.

Later reused on modern knives in 2010, often accompanied with a pile side stamp to help distinguish from older knives.



Queen City mark side stamp used from approximately 1922 to 1942. Different sizes used. Also used on some knives from 1984 to 2017.



Rare Schatt & Morgan mid-blade stamp, used approximately during the 1920's.



Queen Cutlery mark side stamp used during the early 1920's.

There are possible similar stamps with no quotes around Queen.



Queen Cutlery stamp used in early 1920's.



Queen Cutlery Identification Guide

Tang Stamp & Blade Etch Dating

QUEEN CITY
TITUSVILLE, PA.



Queen City mark side stamp used from approximately 1925 to 1932. 2 different styles of stamp shown here.



Queen City mark side stamp used from approximately 1930 to 1932. This mark was reused from 2012-2017 on some knife shields.

*Queen
City*



Queen City mark side stamp used from approximately 1937 to 1945.

Later reused on modern knives from 1984-2017, often accompanied with a pile side stamp to help distinguish from older knives.

*Queen
City*



Queen City mark side stamp used from approximately 1937 to 1945.

U.S.
QUEEN CITY
1943



Queen City mark side stamp used in 1943 on a military WW2 machette.



Queen Cutlery mark side stamp used from approximately 1945 to 1948.

QUEEN

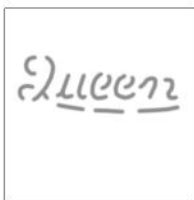


Queen Cutlery mark side sandblasted blade etch used approximately from 1946 to 1948.



Queen Cutlery Identification Guide

Tang Stamp & Blade Etch Dating



Queen Cutlery mark side sandblasted blade etch used approximately from 1946 to 1948.



Queen Cutlery mark side sandblasted blade etch used approximately from 1946 to 1948.



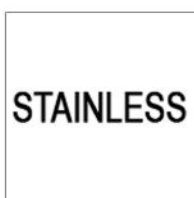
Queen Cutlery mark side stamp used from approximately 1945 to 1955.

This stamp is often referred to as "The Big Q"



Queen Cutlery stamp used only in Rough Hammered Kitchen Knives from 1945 to 1949.

Note: "Made in U.S.A." was added in 1971 and used from that year onward through the 70's. After that, Kitchen Knives were removed from the catalog.



Queen Cutlery stamp used from 1951 to 1954. Can be used on either mark or pile sides.



Queen Cutlery mark side stamp used from 1951 to 1954.

*One of the rarest Queen stamps, only used on two versions of one pattern.



Queen Cutlery mark side stamp used approximately from 1951 to 1954.

*Most difficult to find of all stainless era stamps.



Queen Cutlery Identification Guide

Tang Stamp & Blade Etch Dating

QUEENCUTLERYCO.
TITUSVILLE,PA.



Queen Cutlery double line mark side stamp used approximately from 1951 to 1954.



Queen Cutlery mark side stamp used approximately from 1951 to 1954.



Queen Cutlery mark side stamp used from 1951 to 1954.



Queen Cutlery mark side stamp used approximately from 1951 to 1954.



Queen Cutlery mark side stamp used from approximately 1951 to 1954.



Example of "Queen Stainless Steel" sticker label on blade of #39 pattern to help promote the steel name change. The earliest pocket knife offered with stainless steel blades. Knife intended for use on a display board. Approximately 1951 to 1955.



Queen Cutlery mark side stamp used approximately from 1951 to 1954.



Queen Cutlery Identification Guide

Tang Stamp & Blade Etch Dating



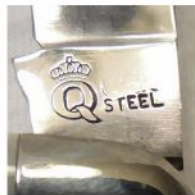
Queen Cutlery mark side stamp used throughout the 1950's.



Queen Cutlery mark side stamp used from approximately 1955 to 1957.



Example of "Queen Steel" sticker label on blade of stockman pattern to help promote the steel name change. Knife intended for use on a display board. Example shown is from 1955 to 1956.



Queen Cutlery mark side stamp used from approximately 1958 to 1960.

*Queen probably shortened the name from "Queen Steel" to "Q Steel" to avoid legal issues.



Example of "Queen Steel" sticker label on blade of stockman pattern with horsepick blade, to help promote the change in steel. Knife intended for use on very limited display boards. Example shown is from the 1950's.



Queen Cutlery mark side stamp used from approximately 1958 to 1960.

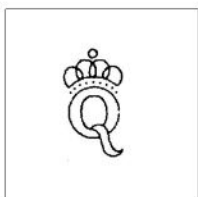
**NO
STAMP
USED**

***Note - Queen did not use any tang stamps from 1961 to 1971. Instead, blades were etched with Queen Cutlery name/logo.



Queen Cutlery Identification Guide

Tang Stamp & Blade Etch Dating



Queen Cutlery mark side stamp used in 1971. Same design as "Big Q" but smaller size. Servotronics used this stamp on some smaller sized pocket knives. There may be other stamps tried in the 1971 transition period.

This stamp is often referred to as "The Small Q"



Queen Cutlery most common blade etch used from the late 1950's through 2012. This etch was used on many knives, often with the model numbers etched also.



Blade etch including the "MADE IN U.S.A." underneath the Queen Steel # Model. Introduced in 1971 after the Servotronics purchase. Used intermittently until 1984 when it was placed on the tang stamp.



OK stamp for "Ontario Knife Company", sister company of Queen under Servotronics ownership. Used intermittently from 1971 to 2012. Blades may have Ontario tang stamp, with Queen blade etch.



Queen Cutlery mark side stamp used in 1972 only.



Queen Cutlery mark side stamp used on the Gamekeeper series, showing the pattern number in the stamp. Used from approximately 1972 to 1981.



Queen Cutlery mark side stamp used from approximately 1973 to 1975.

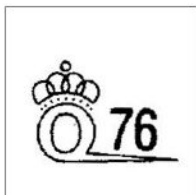


Queen Cutlery Identification Guide

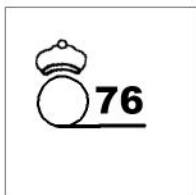
Tang Stamp & Blade Etch Dating



Queen Cutlery mark side stamp used approximately from 1975 to 1976.



Queen Cutlery mark side stamp used during 1976 only.



Queen Cutlery mark side stamp used during 1976 only.

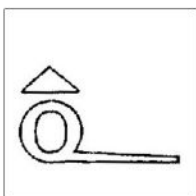
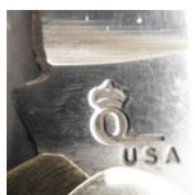


Photo of knife with this stamp not yet available

Queen Cutlery mark side stamp used during 1976, issued for Government or Military contract knives only.



Queen Cutlery mark side stamp used during the 1980's and early 1990's, with year included in stamp.



Queen Cutlery mark side stamp used from 1977 to 1983. Usually the year is included in stamp.



Queen Cutlery mark side stamp used, beginning in 1981. After 1990, the year is often also added to stamp.



Queen Cutlery Identification Guide

Tang Stamp & Blade Etch Dating

QUEEN
CUT.CO.



Queen Cutlery mark side stamp used on the double edge hunter boot knife, approximately from 1982 to 1990.

Q 1986



Queen Cutlery mark side stamp used on a military contract multi-use knife that was made between 1983 and 1986. All knives were stamped with the 1986 stamp.



Queen Cutlery or Schatt & Morgan pile side stamp beginning in 1984, and includes date after 1990.

QUEEN CUT.CO.
TITUSVILLE, PA
XXXX



Queen Cutlery stamp on mark or pile side used from 1990 to 2017, and sometimes accompanied with year stamped in.

MADE IN U.S.A.
2000



Schatt & Morgan pile side stamp used from approximately 1991 to 2010 on the Annual Series knives.

SCHATT &
MORGAN

SCHATT & MORGAN



Schatt & Morgan either mark or pile side stamp used from approximately 1991 to 2017. Can be either 2 lines, or all in 1 line.

QCCC



Queen Cutlery mark side stamp used in late 1990's and early 2000's.



Queen Cutlery Identification Guide

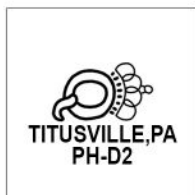
Tang Stamp & Blade Etch Dating



Schatt & Morgan pile side stamp, used on File & Wire knives approximately from 1998 to 2017.



Schatt & Morgan blade etch, used approximately from 2000 to 2017.



Queen Cutlery mark side stamp used from approximately 2002 to 2017. The "PH" refers to Peters Heat Treating, the company that treated the blades.



Queen Cutlery pile side stamp, used on Dan Burke knives from approximately 2004 to 2010.



Queen Cutlery pile side stamp, used from approximately 2011 to 2012 on Heritage Series knives.



Queen Cutlery pile side stamp, used from approximately 2013 to 2017. "DFC" stands for Daniels Family Cutlery, owners of Queen during this time.



Queen Cutlery pile side stamp, used from approximately 2013 to 2017. "DFC" stands for Daniels Family Cutlery, owners of Queen during this time.



Queen Cutlery Identification Guide

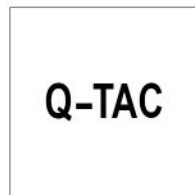
Tang Stamp & Blade Etch Dating



Queen Cutlery mark side stamp, used from approximately 2013 to 2017. "DFC" stands for Daniels Family Cutlery, owners of Queen during this time.



Queen Cutlery pile side stamp, used from approximately 2013 to 2017. "DFC" stands for Daniels Family Cutlery, owners of Queen during this time.



Queen Cutlery stamp used on tactical style knives from 2013 to 2017.



Queen Cutlery Custom Shop blade etch, used from 2014-2015.



"Every Day Carry" blade etch. Means 'Second Quality/Not Warranted', used from 2015-2017.



Schatt & Morgan mark side etched tang instead of stamped, used from 2016-2017.

***Note - additional stamps will be added as discovered. This current guide covers only Schatt & Morgan, Queen City, and Queen Cutlery. The various other brands/stamps produced by the S&M/Queen factory will be covered in separate guides.**



Hatchets, Razors and Scissors

Supplement for Queen Tang and Etch Guide

Cutlery Products of Schatt & Morgan, Queen City and Queen Cutlery beyond Knives.

These various items were critically important to American Cutlery companies in the early 20th century. And to some collectors they continue to be of great interest, so we are providing a guide. Because all these items were bought and used hard, they survive at relatively low rates and often were more simply marked to provide basic information on the maker, or jobber, (because many of these items were contracted from highly specialized cutleries and not made by the company which marketed and sold them.) So, cutleries did not mark these items to provide tight dating for collectors – items often had only one mark for the entire life of the product.

Hatchets

To our knowledge, Schatt & Morgan never produced axes or hatchets for sale.

There is also no record of Queen City Cutlery ever producing or selling axes or hatchets.

Queen Cutlery did not produce axes, though they consistently labeled their hatchets as "axes." Most reserve the name Axe for long handled chopping tools, while hatchets were short, one-handed tools. Most Queen production was for "combo" sets of knife and hatchet, with similar handle treatments. These sets are highly valued.

Reference:

Clark, David (2010). *Reproduction of Schatt & Morgan 1903 and 1907 Catalogs*. (1903, 52 pp, 1907, 128 pp). Published by Lois and Clark Publications, 349 Windsor Dr., Marietta GA 30064. Available from: <https://www.allaboutpocketknives.com/catalog/9580-early-schatt-and-morgan-catalog-reproductions>



Queen Cutlery hatchet stamp, used on nearly all hatchets. Located on the head, dated approximately from 1951 to 1965.



Queen Cutlery "Archers Axe", located on the shank of the blade. Dated approximately from 1956 to 1965.

The tang information and photos provided by Fred Fisher, David Clark, Brian Guth, and Daniel Lago. Tang guide compiled by Carl Bradshaw.



Hatchets, Razors and Scissors

Supplement for Queen Tang and Etch Guide

Razors

Straight razors and sharpening strops were required until safety razors, and eventually electric razors, replaced them since using a straight razor required gaining skill in both shaving and sharpening. We begin with New York Cutlery Company razors, since they became Schatt & Morgan after the move to Gowanda, New York. We then show both Gowanda, N.Y., and Titusville, PA, razors for Schatt & Morgan. An ad in the Titusville Herald, 1909, shows "Cohn and Oakleaf, a local retail store, purchased the entire stock of razors and strops noting that Schatt & Morgan is discontinuing that brand of business; Razor and strop \$1.00."

A reproduction of the Schatt & Morgan Catalog from 1907, pp. 118-126, shows a full line of razors.

There are no records of either Queen City Cutlery or Queen Cutlery ever producing straight razors.

N.Y.CUTLERY Co.
GUARANTEED



New York Cutlery straight razor tang stamp, used from 1897 to 1902.

NYCUTLERY
JAPAN



New York Cutlery straight razor tang stamp, made in Japan, used from 1897 to 1902.

N.Y.CUTLERY
COMPANY GERMANY



New York Cutlery straight razor tang stamp, made in Germany, used from 1897 to 1902.

S X M
GOWANDA, N.Y.



Schatt & Morgan straight razor tang stamp, used from 1897 to 1902.

S X M
NEW YORK



Schatt & Morgan straight razor tang stamp, used from 1897 to 1902.



Hatchets, Razors and Scissors

Supplement for Queen Tang and Etch Guide

SCHATT&MORGAN
GOWANDA,N.Y.



Schatt & Morgan straight razor tang stamp, used from 1897 to 1902.

SCHATT&MORGAN CUTL.CO.
TITUSVILLE,PA.



Schatt & Morgan straight razor arched tang stamp, used from 1903 to 1909.

SCHATT&MORGAN
TITUSVILLE,PA.



Schatt & Morgan straight razor tang stamp, used from 1903 to 1909.

SCHATT & MORGAN
CUTLERY CO.
TITUSVILLE,PA.



Schatt & Morgan straight razor tang stamp, used from 1903 to 1909.

The engraving is shown on celluloid on the base of the razor.



Hatchets, Razors and Scissors

Supplement for Queen Tang and Etch Guide

Scissors

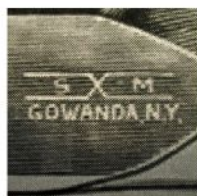
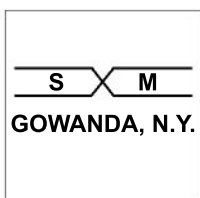
Schatt & Morgan produced scissors or shears during their time at Gowanda, N.Y., shown in their first Titusville.PA, 1903, catalog, pp. 44-52, up to very large paper hanging shears 14". We have not seen any Schatt & Morgan scissors or shears (either from Gowanda or Titusville) and therefore depart from our usual method of photographing actual tang or etch marks, showing only an image from the reproduction 1903 Catalog. All those images (see below) show a Gowanda, N.Y. Schatt & Morgan stamp, except for a very few that show "Lodi Shear Co".

There are no records of Queen City producing scissors or shears, and none have been found except one pair of buttonhole scissors, which is shown below.

Queen Cutlery produced a large line of scissors and shears with very few having any mark beyond the basic "Q", as shown below.



Stamp for shears shown in the 1903 Schatt & Morgan catalog. "Lodi Shear Co." stamp, although at this time no photos of actual shears with this stamp have been found.



Stamp for shears shown in the 1903 Schatt & Morgan catalog. "S&M Gowanda, N.Y." stamp, although at this time no photos of actual shears with this stamp have been found.



Queen City Cutlery stamp on Buttonhole Scissors dated prior to 1945.



Queen Cutlery "Big Q" stamp used on most scissors and shears from 1949 to 1974.



Queen Cutlery stamp used only on pinking shears from 1955 to 1965.



Dollar Knives, Robeson, and Tuna Valley

Supplement for Queen Tang and Etch Guide

This supplement tang stamp identification guide contains three brand names that have been widely associated with Schatt & Morgan and Queen Cutlery over the past 115 years. Of course, there have been MANY private label special factory orders for different brands over the years, but these three have been either owned or licensed by Queen, show tang stamps that can be used to identify Queen-made knives, and are widely known to have been made in the Titusville factory.

Dollar Knives: Four Generations

1. 1922 – 1926: In 1922 The Dollar Knife Corporation was established and a trademark was registered. The company letter head showed the trademark with main office in Atlanta and the factory in Titusville, PA. It named Paul W. Jones of Canton, Ga as president, C.B. Morgan and Vice-president and Jay Rudasill as Secy. & Treas. Letter head had a picture of the Schatt & Morgan Cutlery factory. These knives were tang stamped “DOLLAR KNIFE CORP. ATLANTA.”
2. 1926: The Dollar Knife Corp. was operating under a lease as a sales organization of the Schatt & Morgan Cutlery Co. with the main office and factory in Titusville, PA. A new trademark for the familiar pyralin handled with federal red shield knives was registered. These, and the others handled in bone, were tang stamped with the SXM tang stamp.
3. Circa 1933: D. K. CORP. Titusville: This is a rare tang stamp thought to have been used by Queen City Cutlery very near the time Queen City bought the Schatt & Morgan Cutlery with its equipment and inventory. It may have been an attempt to use the Dollar Knife brand in some way that never went very far.
4. 2003: A blade etch used by the Queen Cutlery Co. in a revival of the Dollar Knife name.



Dollar Knife - Atlanta mark side stamp used from approximately 1922 to 1926.



Dollar Knife - Titusville mark side stamp used from approximately 1924 to 1933.



Dollar Knife blade etch used in 2003.



Dollar Knives, Robeson, and Tuna Valley

Supplement for Queen Tang and Etch Guide

Robeson: Robeson Cutlery, located in Western and Central New York, was a major cutlery company from 1892 until 1965. Servotronics purchased the Ontario Knife Company (OKC) in 1967, and Queen Cutlery in 1969. The Robeson trademark was bought by OKC in 1971, and since OKC and Queen were both under the Servotronics ownership, it allowed the Robeson brand knives to be made at the Queen factory. They began producing versions of Robeson knives in 1993, using the “ShurEdge”, “Mastercraft”, and “Pocketeze” trade names. Twenty patterns were cataloged prior to 1998, and after that many special projects were made in editions of 100 or 200 pieces, through Queen’s closing in 2017.

ROBESON
MasterCraft
U.S.A.



Robeson MasterCraft stamp used from approximately 2000-2018

ROBESON
ShurEdge
U.S.A.



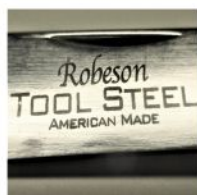
Robeson ShurEdge stamp used from 1993-2018

ShurEdge
TRADE MARK
1 OF 200



Robeson ShurEdge blade etch used from 1993-2017

Robeson
TOOL STEEL
AMERICAN MADE



Robeson Tool Steel blade etch used from 2002-2018



Dollar Knives, Robeson, and Tuna Valley

Supplement for Queen Tang and Etch Guide

Tuna Valley: The Tuna Valley knives have been famously produced by three prominent Pennsylvania cutlery companies; WR Case & Sons, Great Eastern Cutlery, and Queen Cutlery. During the Daniels Family Cutlery ownership of Queen from 2012-2017, the Tuna Valley knives were made in Titusville at the Queen factory. The stamp used is identical to the Tuna Valley knives made at Great Eastern from 2009-2012, so one cannot determine where the knives were manufactured based on the tang stamp alone. Rights to the Tuna Valley name still remain with the Daniels Family, and knives are still being produced today, however all Tuna Valley knives made after 2017 utilize a newer tang stamp which helps differentiate modern made knives from ones made during the Queen era. A link to the complete listing of all Tuna Valley knives made is included in the reference section below. Photos of all Tuna knives produced can be found on the Daniels Family Knife Brands website www.danielsfamilyknifebrands.com



Tuna Valley mark side stamp used from 2012-2018. There are 2 different sizes, identical in design, used depending on the blade size.



Tuna Valley pile side stamp used from 2012-2018. There are 2 different sizes, identical in design, used depending on the blade size.

References:

David Krauss and David Clark (2005) The History of Dollar Knives. 28 pp. Krauss Publications, 3260 Euclid Heights Blvd, Cleveland Heights, OH 44118

David Krauss (2002) American Pocketknives, chapter 23, page 185. Krauss Publications, 3260 Euclid Heights Blvd, Cleveland Heights, OH 44118

Tom Kalcevic (2000) Knives Can Talk!: The Story of the Robeson Cutlery Co. Published by Tom Kalcevic

John Goins (1998) Goins' Encyclopedia of Cutlery Markings. Published by Knife World

Brief History of Tuna Valley, available at

<https://queencutleryguide.com/wp-content/uploads/2020/01/Brief-TV-History.pdf>

This supplement was prepared by David Clark, David Krauss, Daniel Lago, and Carl Bradshaw.